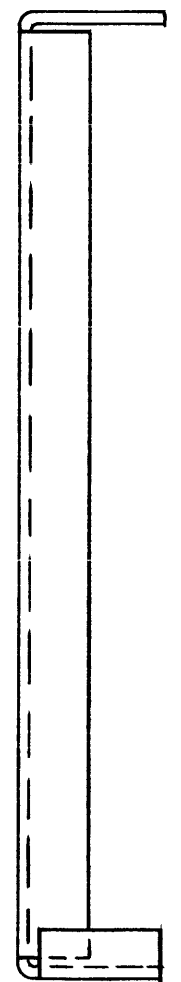
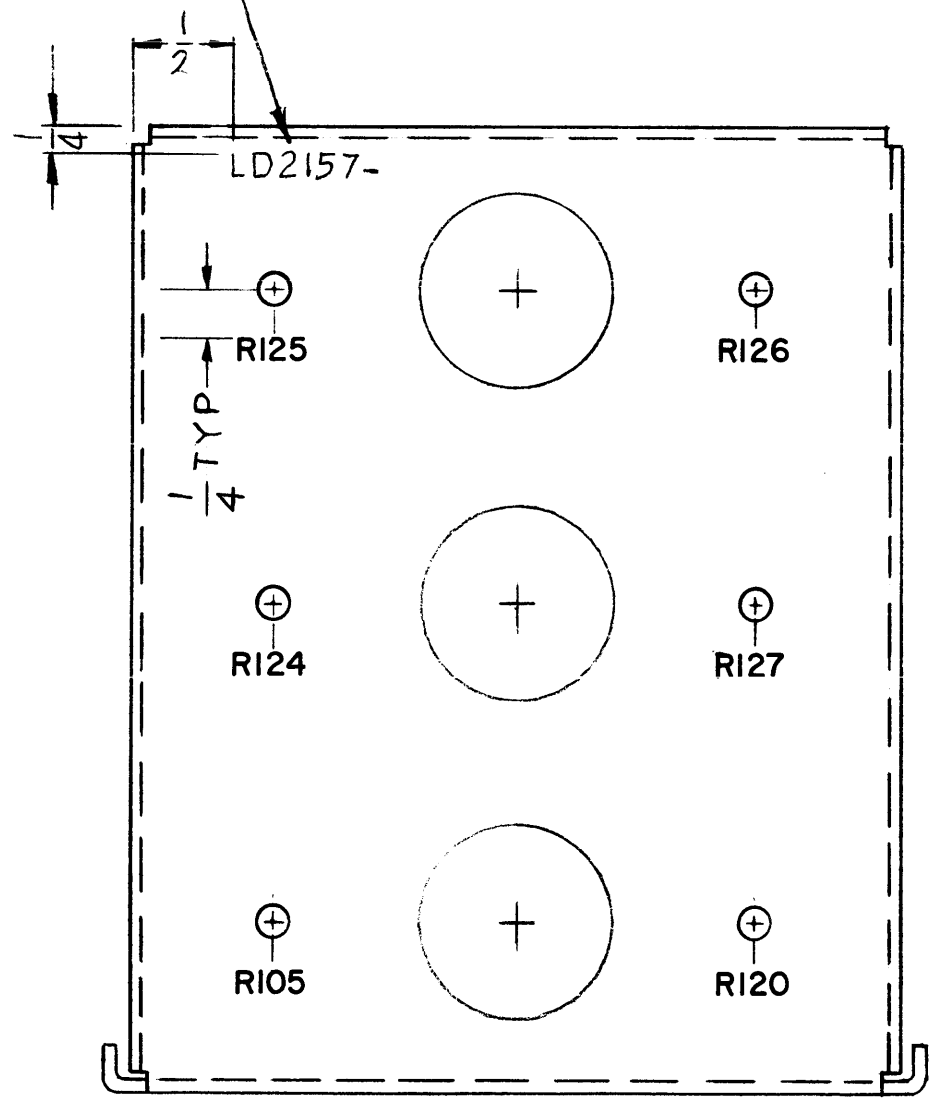


LD2157

REVISIONS						
SYM	DESCRIPTION	DATE	E.M.N. NO.	DRAFT	CHKD	APPD
X	EXPERIMENTAL RELEASE	9/2/66	X	CED		
Ø	ORIGINAL RELEASE FOR PAPER	3-20-67		L.A.K.		

MARK TMC P/N 1/8 HIGH GOTHIC  
W/LATEST REV LETTER



MARKING PROCESS: AS PER TMC SPECIFICATION S-727.  
LETTERING: 1/8 HIGH BLACK GOTHIC, LOCATED AS SHOWN.

NOTE:

- ASSEMBLY REQUIRES 2 MTG. BRACKETS HOWEVER, ONLY ONE BRACKET IS TO BE LETTERED AS SHOWN.

NOTES

1	PSP 350C	
Q'TY./UNIT	MODEL USED ON	ASS'Y. NO.
SCALE 1:1	CODE	
THE CONTENTS OF THIS DRAWING ARE THE EXCLUSIVE PROPERTY OF THE TECHNICAL MATERIEL CORP. ITS UNAUTHORIZED USE OR REPRODUCTION IN WHOLE OR IN PART IS STRICTLY FORBIDDEN.		

REF: MS 5069

REQ'D.	ITEM	PART NUMBER	DESCRIPTION	SYMBOL
	BUTLER		LIST OF MATERIAL	
MATERIAL		THE TECHNICAL MATERIEL CORP. MAMARONECK, NEW YORK		
FINISH		TITLE MARKING BRACKET, MOUNTING, RESISTOR		
UNLESS OTHERWISE SPECIFIED DIMENSIONS ARE IN INCHES AND INCLUDE CHEMICALLY APPLIED OR PLATED FINISHES		DRAWN C.E. DUDAS	DATE 9/2/66	FINAL APPROVAL <i>[Signature]</i>
		CHECKED <i>[Signature]</i>	DATE	DATE 3/20/67
DECIMALS .X ± .05 .XX ± .01 .XXX ± .005		ELECT. DES.		DATE
FRACTIONS ± 1/64 ANGLES ± 0° 30'		MECH. DES.		DATE
TOLERANCES		SHEET		REV. LTR.
		LD2157		Ø