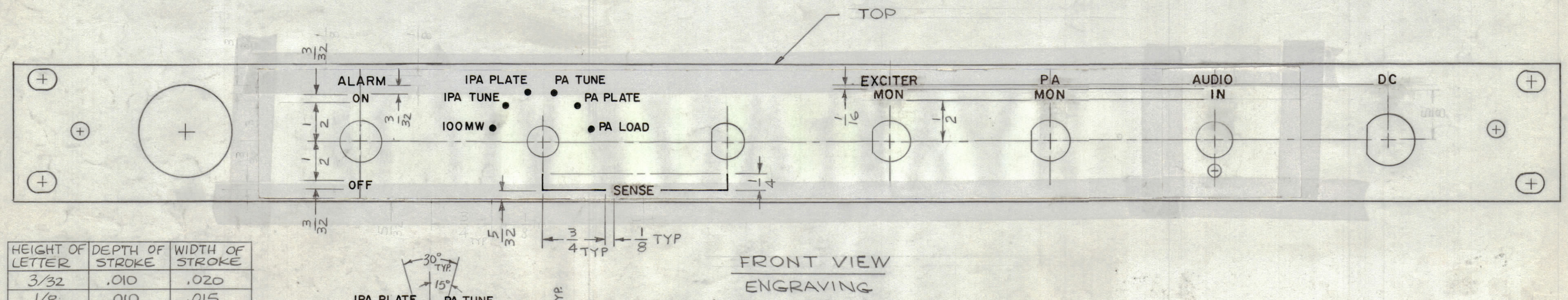
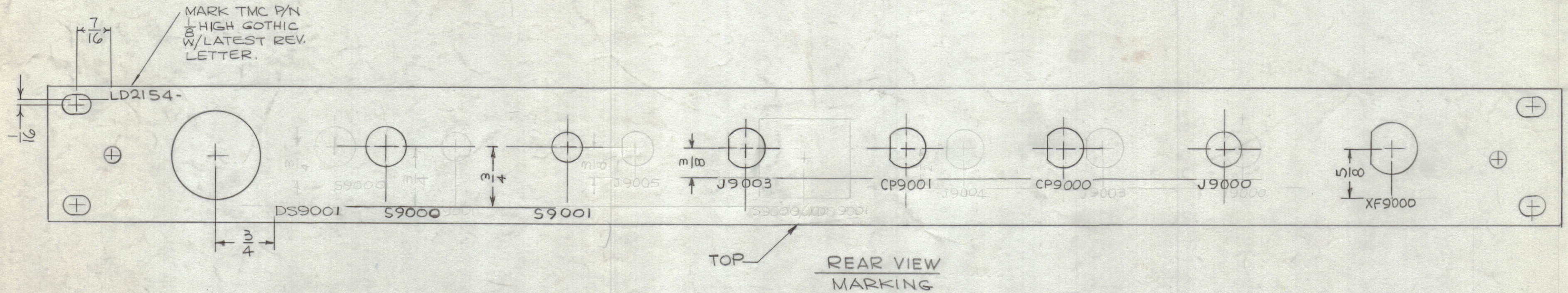
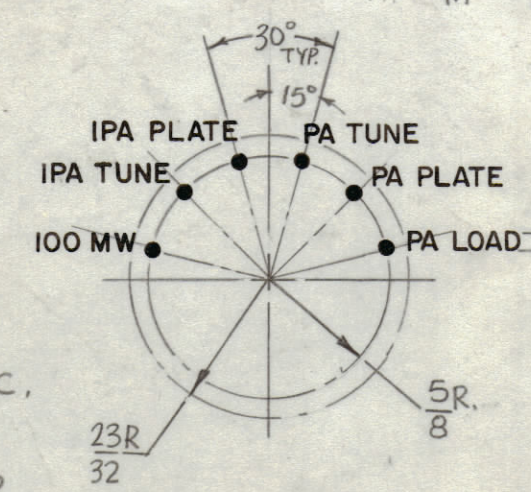


REVISIONS							
ZONE	SYM	DESCRIPTION	DATE	E.M.N. NO.	DRAFT	CHKD	APPD
	X	EXP. RELEASE	8-29-66	X			
	X1	COMPLETELY REVISED	9-9-66	X1	JBC		
	X2	J9003 WAS J9005, CP9001 WAS J9004, CP9000 WAS J9003	10-4-66	X2			
	X3	ADD LOCATING DIM. FOR TMC PART NO.	12-8-66	VM	Jc		
	Q	ORIGINAL RELEASE FOR PRODUCTION	12-13-66		4fw		

MARKING PROCESS: AS PER TMC SPECIFICATION S-727.
 LETTERING: 1/8 HIGH BLACK GOTHIC, LOCATED AS SHOWN.



HEIGHT OF LETTER	DEPTH OF STROKE	WIDTH OF STROKE
3/32	.010	.020
1/8	.010	.015
DOTS	.010	1/16 DIA.
LINES	.010	.015



UNLESS OTHERWISE SPECIFIED:
 1- ALL ENGRAVING TO BE 1/8 HIGH GOTHIC.
 2- ALL ENGRAVING TO BE WHITE FILLED.
 3- ALL LETTER GROUPS TO BE CENTERED ON HOLES OR CUTOUTS.

NOTES

1	AX-633	A5549
Q'TY./UNIT	MODEL USED ON	ASS'Y. NO.
SCALE 1:1	CODE A	

REF. MS.5056-

REQ'D.	ITEM	PART NUMBER	DESCRIPTION	SYMBOL
F. BUDETTI LIST OF MATERIAL				
MATERIAL			THE TECHNICAL MATERIEL CORP. MAMARONECK, NEW YORK	
FINISH			TITLE MARKING, PANEL FRONT AS PER TMC SPEC. S727	
UNLESS OTHERWISE SPECIFIED DIMENSIONS ARE IN INCHES AND INCLUDE CHEMICALLY APPLIED OR PLATED FINISHES		DRAWN G.D.L	DATE 8-27-66	FINAL APPROVAL [Signature]
		CHECKED	DATE	
DECIMALS .X ± .05 .XX ± .01 .XXX ± .005		FRACTIONS ± 1/64 ANGLES ± 0° 30'		ELECT. DES. [Signature]
TOLERANCES		MECH. DES. [Signature]		DATE 12-8-66
			DATE	SHEET
			DATE	REV. LTR.

LD2154

A