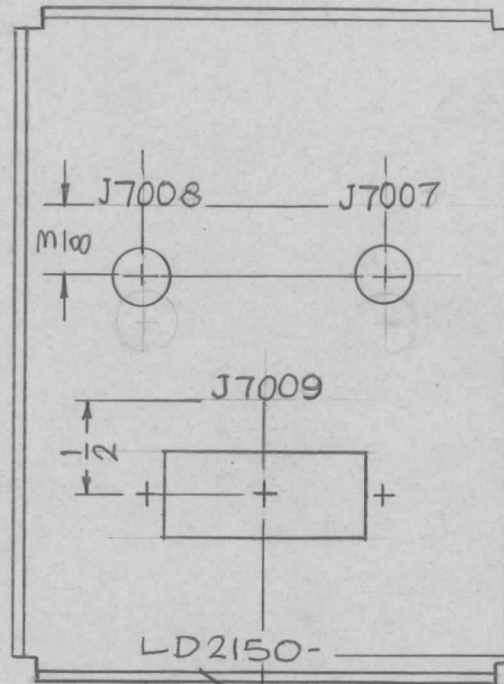
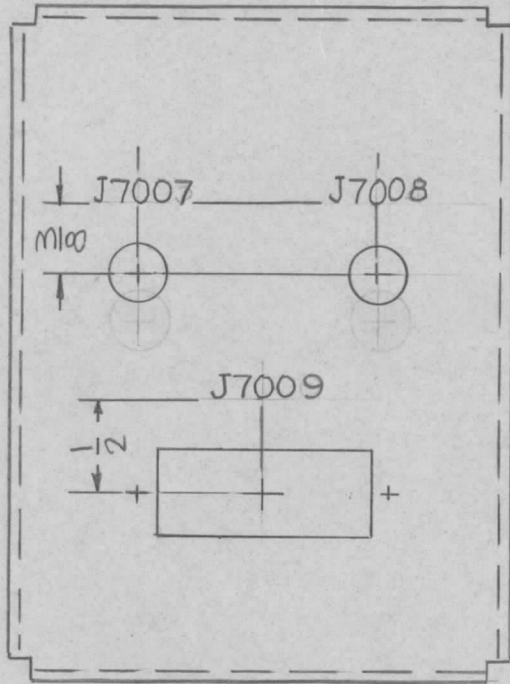


REQ. PER UNIT	USED ON			LD2150 $\emptyset$
	MODEL	ASS'Y. NO.	DATE	
1	SWCA-3K	BMA149	8-23-66	



MARKING PROCESS;  
AS PER TMC SPEC.  
S727.  
LETTERING:  $\frac{1}{8}$  HIGH, BLK  
GOTHIC LOCATED  
AS SHOWN.

MARK TMC P/N  
 $\frac{1}{8}$  HIGH GOTHIC  
W/LATEST REV.  
LETTER.

REF: MS5044

$\emptyset$	ORIGINAL RELEASE FOR PRODUCTION	11-22-66	$\emptyset$	RME			REQ. ITEM	PART NO.	F. BUDETTI	DESCRIPTION	SYMBOL
X2	$\frac{3}{8}$ DIM. ADD TO TMC PT. NO.	11-19-66	M	Jc						THE TECHNICAL MATERIEL CORP. MAMARONECK, NEW YORK	
X1	SYMBOLS REVISED	8-25-66	X1				STOCK SIZE				MARKING, PLATE REAR
X	EXP. RELEASE	8-23-66	X				MATERIAL			AS PER TMC SPEC S727	
SYM	DESCRIPTION	DATE	CH. NO.	DRAFTS	CHECKER	ENG. APP.					
UNLESS OTHERWISE SPECIFIED DIMENSIONS ARE IN INCHES AND INCLUDE CHEMICALLY APPLIED OR PLATED FINISHES						SCALE					
						1:1					
DECIMALS .X $\pm$ .05 .XX $\pm$ .01 .XXX $\pm$ .005	TOLERANCES	FRACTIONS $\pm$ 1/64 ANGLES $\pm$ 0° 30'	CODE A				TYPE & TEMPER	HEAT TREAT. SPEC.	DRAWN	CHECKED	FINAL APPROVAL
							FINISH & SPEC. NO.	ELEC. DES. APP.	MECH. DES. APP.	LD2150 $\emptyset$	