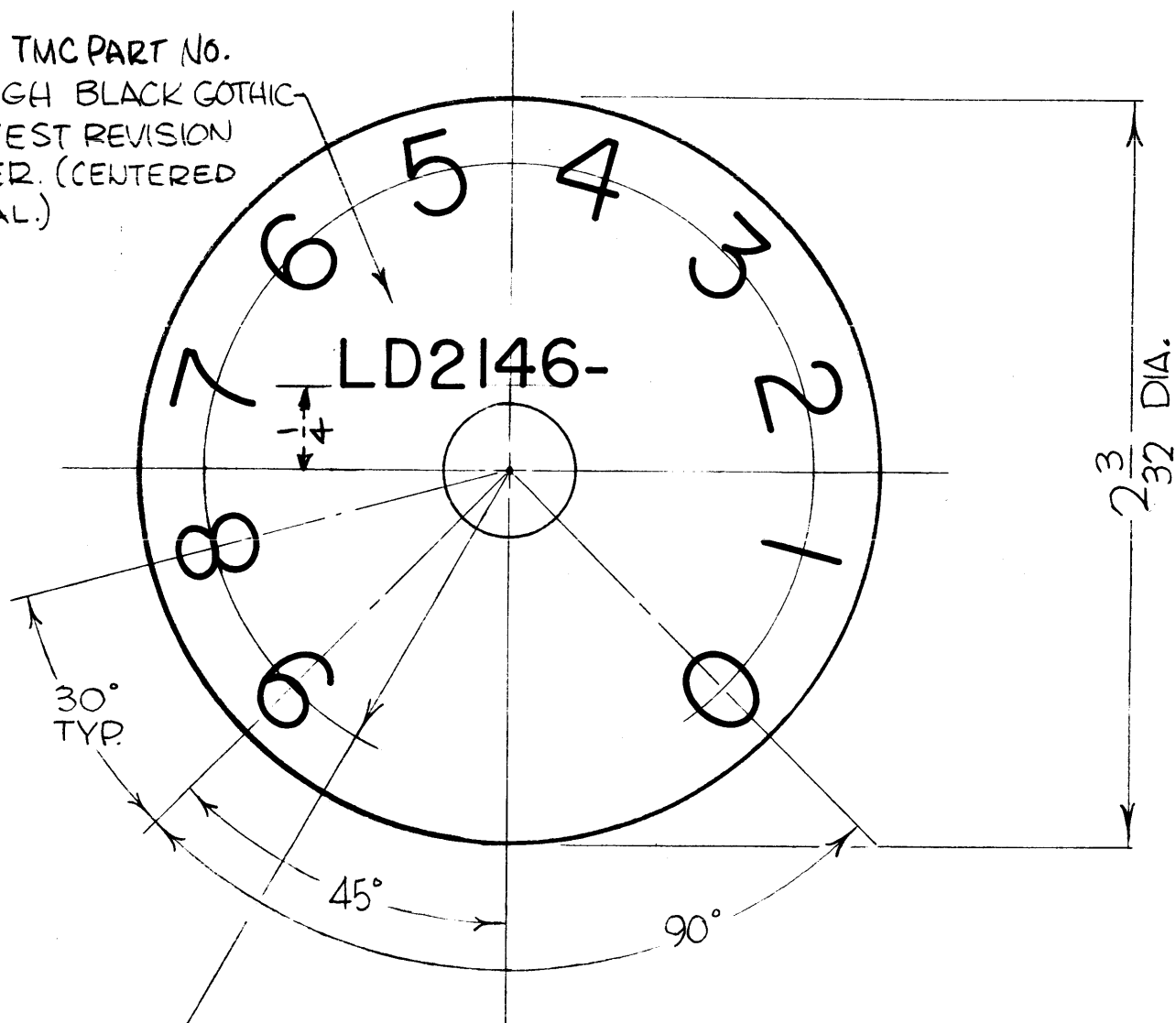


HEIGHT OF LETTER	DEPTH OF STROKE	WIDTH OF STROKE
1/4	See Note 2	.030

NOTE: ALL NUMERALS, MUST BE CENTERED ON .859 RADIUS AND ANGULAR DIMENSIONS AS INDICATED,

MARK TMC PART NO. 1/8 HIGH BLACK GOTHIC W/LATEST REVISION LETTER. (CENTERED ON DIAL.)



.859 R (☉ OF NUMERALS)

- 1-MAT'L: 1/16 THK LAMINATED LAMICOID #8000 BLACK FACING OVER TRANSLUCENT WHITE CORE.
- 2-ENGRAVE FROM BLK SIDF. THRU BLK FACING, TO WHITE CORE.
- 3-ENGRAVING DEP TMC SPEC. S566.

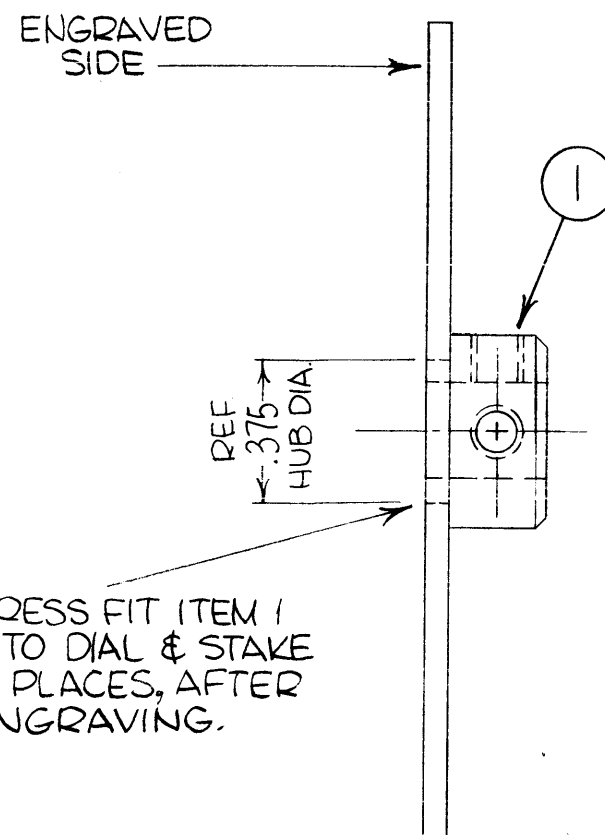
NOTES

	LSCA-1	
	MMX-()	
	VOX-7	
Q'TY./UNIT	MODEL USED ON	ASS'Y. NO.
SCALE 2:1	CODE C	

THE CONTENTS OF THIS DRAWING ARE THE EXCLUSIVE PROPERTY OF THE TECHNICAL MATERIEL CORP. ITS UNAUTHORIZED USE OR REPRODUCTION IN WHOLE OR IN PART IS STRICTLY FORBIDDEN.

SYM	DESCRIPTION	REVISIONS				
		DATE	E.M.N. NO.	DRAFT	CHKD	APPD
X1	"ALL NUMERALS" ETC NOTE, ADDED	9/16/66	-M	Jc	JCB	bal.
X2	ADD. TMC PT. NO.	9-12-66	-H	NCA		
Ø	ORIGINAL RELEASE FOR PROD.	9/22/66	-H			JCB
A	MAT'L WERE 1/16 THK LAMINATED LAM-ICOID OPAQUE BLACK FACING WITH TRANSPARENT WHITE CORE.	12/8/66	174.15	WHD	JCB	
B	DELE. MOD. NO. HFSR-4 - MOD MMX() WAS MMX-1	10/24/67	C.C.	brf		OPJ

LD2146 B



NOTE: HUB TO BE CONCENTRIC TO DIAL WHEN ASSEMBLED.

PRESS FIT ITEM 1 INTO DIAL & STAKE 4 PLACES, AFTER ENGRAVING.

1	1	PM1327	HUB, DIAL	
REQ'D.	ITEM	PART NUMBER	DESCRIPTION	SYMBOL

POSE LIST OF MATERIAL SK3213LD2

MATERIAL		THE TECHNICAL MATERIEL CORP. MAMARONECK, NEW YORK			
SEE NOTE 1		TITLE MARKING, DIAL			
FINISH		DRAWN JC		DATE 8/18/66	
UNLESS OTHERWISE SPECIFIED DIMENSIONS ARE IN INCHES AND INCLUDE CHEMICALLY APPLIED OR PLATED FINISHES		CHECKED JCB		DATE 9/12/66	
DECIMALS .X ± .05 .XX ± .01 .XXX ± .005		ELECT. DES. SAC		DATE	
FRACTI NS ± 1/64 ANGLES ± 0° 30'		MECH. DES.		DATE	
TOLERANCES		SHEET		REV. LTR.	

LD2146 B