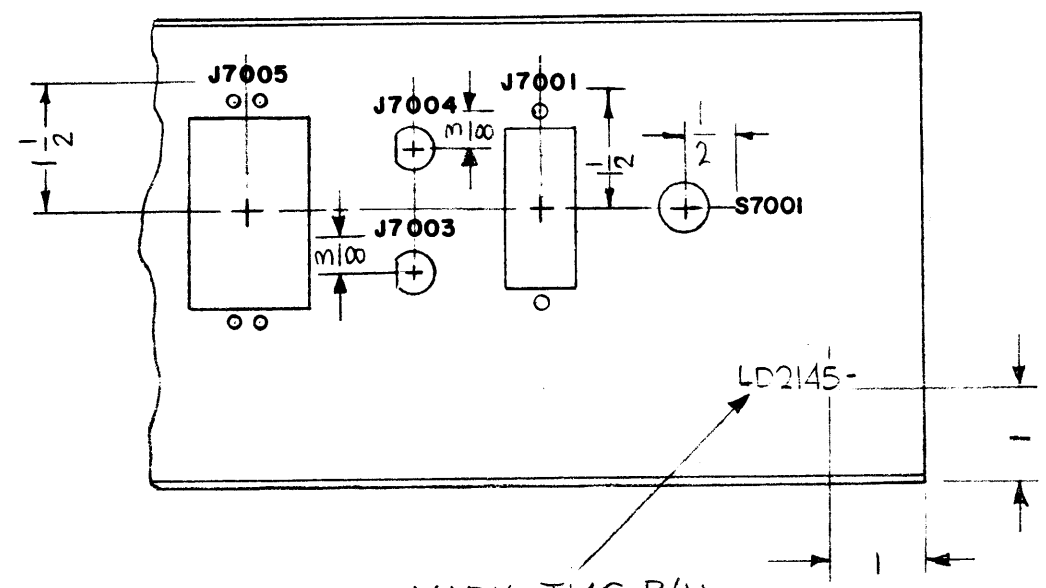
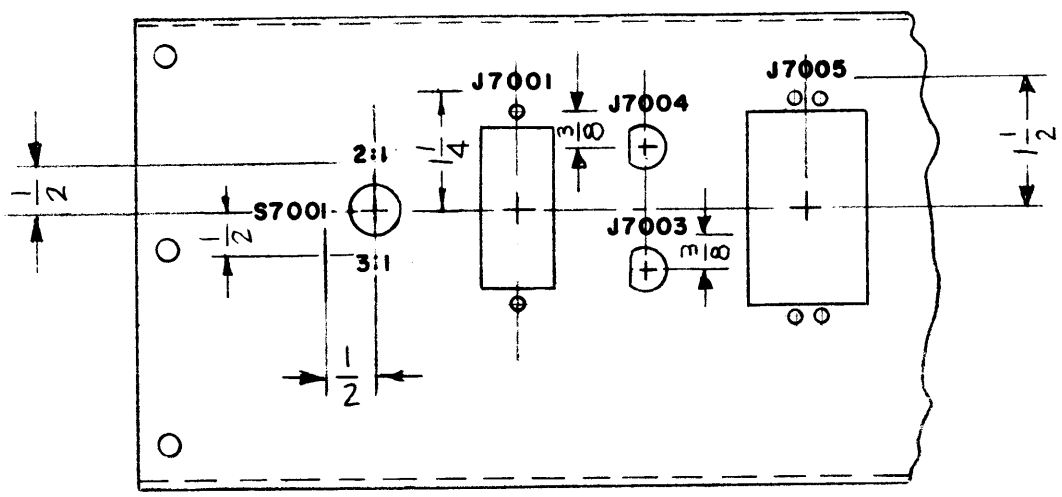


LD2145

REVISIONS

SYM	DESCRIPTION	DATE	E.M.N. NO.	DRAFT	CHKD	APPD
X	EXP RELEASE	8-18-66	X	JBC		JBC
X1	RELOCATE "S7001", ADDED "2:1 & 3:1"	8-29-66	X1	JBC		JBC
X2	S7001 RELOCATED	8-30-66	X2	JBC		JBC
Ø	ORIGINAL RELEASE FOR PRODUCTION	11-22-66	Ø	RME		RME



MARK TMC P/N
W/LATEST REV.
LETTER.

REF: MS4877

MARKING PROCESS: AS PER TMC SPECIFICATION S-727.
LETTERING: 1/8 HIGH BLACK GOTHIC, LOCATED AS SHOWN.

1	SWCA-3K	A5268
Q'TY./UNIT	MODEL USED ON	ASS'Y. NO.
SCALE 1:2	CODE A	

THE CONTENTS OF THIS DRAWING ARE THE EXCLUSIVE PROPERTY OF THE TECHNICAL MATERIEL CORP. ITS UNAUTHORIZED USE OR REPRODUCTION IN WHOLE OR IN PART IS STRICTLY FORBIDDEN.

REQ'D.	ITEM	PART NUMBER	DESCRIPTION	SYMBOL
F. BUDETTI LIST OF MATERIAL				
MATERIAL			THE TECHNICAL MATERIEL CORP. MAMARONECK, NEW YORK	
FINISH			TITLE MARKING, PLATE, BACK	
UNLESS OTHERWISE SPECIFIED DIMENSIONS ARE IN INCHES AND INCLUDE CHEMICALLY APPLIED OR PLATED FINISHES				
DECIMALS .X ± .05 .XX ± .01 .XXX ± .005		TOLERANCES		FRACTIONS ± 1/64 ANGLES ± 0° 30'
DRAWN	JBC	DATE	8-18-66	FINAL APPROVAL
CHECKED	JBC	DATE	11-19-66	DATE
ELECT. DES.	JBC	DATE	11-22-66	LD2145
MECH. DES.	JBC	DATE	11-22-66	Ø
SHEET				REV. LTR.

NOTES

M/L JBC 11/21/66