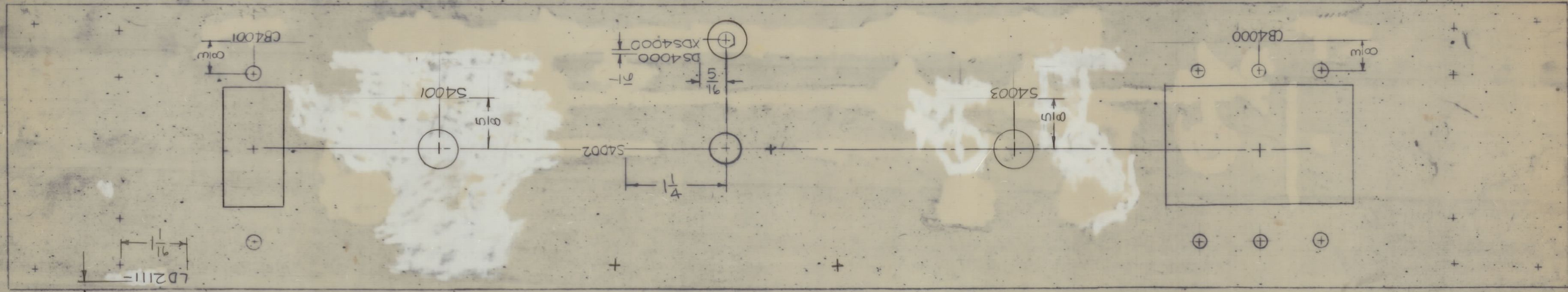


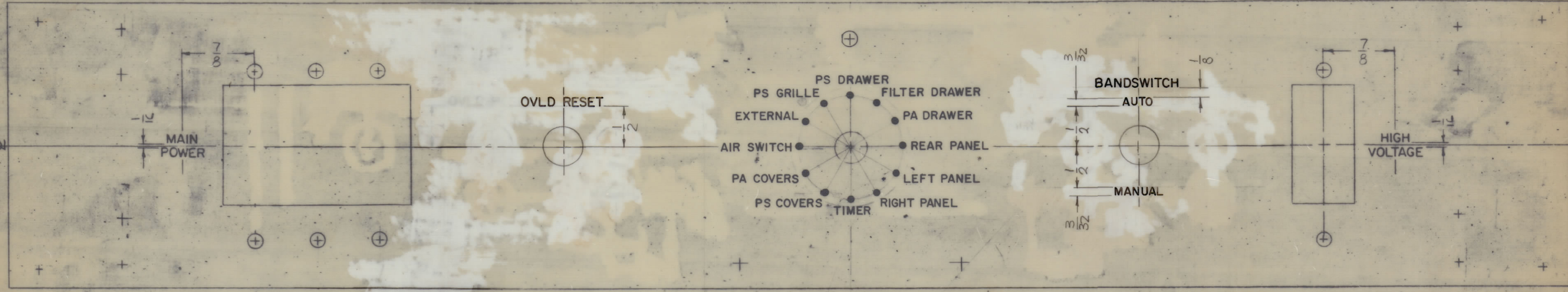
REVISIONS							
ZONE	SYM	DESCRIPTION	DATE	E.M.N. NO.	DRAFT	CHKD	APPD
	X	EXPERIMENTAL RELEASE	7-11-66	X			
	Ø	ORIGINAL RELEASE FOR PRODUCTION	5-27-67		RME		
	A	ON CHART, 3/32 WIDTH OF SPEAKER WAS ".020", 1/8 WAS ".015"	10-20-67	185G	HLL		FB

MARKING PROCESS: AS PER TMC SPECIFICATION S-727.
 LETTERING: 1/8 HIGH BLACK GOTHIC, LOCATED AS SHOWN.

MARKING REAR VIEW
 TOP OF PANEL



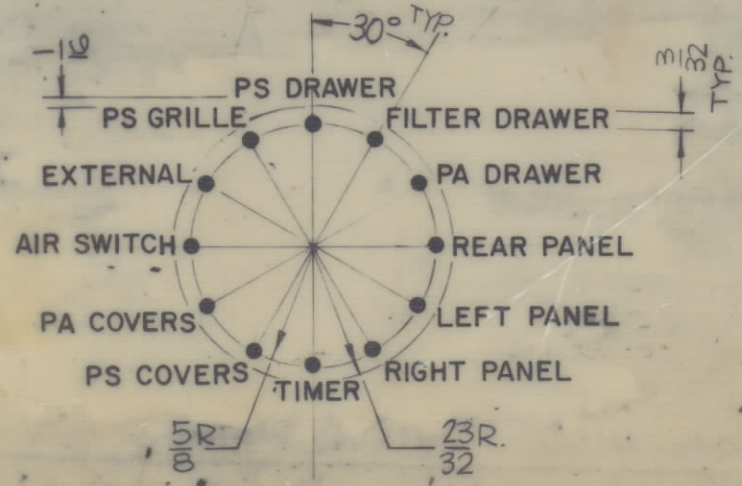
TOP OF PANEL



ENGRAVING FRONT VIEW

HEIGHT OF LETTERS	DEPTH OF STROKE	WIDTH OF STROKE
3/32	.010	.015
1/8	.010	.020
DOTS	.010	1/16 DIA.
LINES	.010	.015

UNLESS OTHERWISE SPECIFIED:
 1- ALL ENGRAVING TO BE 1/8 HIGH GOTHIC.
 2- ALL ENGRAVING TO BE WHITE FILLED.
 3- ALL LETTER GROUPS TO BE CENTERED ON HOLES OR CUTOUTS.
 4- ALL ENGRAVING PER TMC SPEC. S566.



REF. MS 5009

REQ'D.	ITEM	PART NUMBER	DESCRIPTION	SYMBOL
F. BUDETTI				
LIST OF MATERIAL				
MATERIAL			THE TECHNICAL MATERIEL CORP. MAMARONECK, NEW YORK	
FINISH			TITLE MARKING, PANEL FRONT MARKING PROCESS ENGRAVING	
UNLESS OTHERWISE SPECIFIED DIMENSIONS ARE IN INCHES AND INCLUDE CHEMICALLY APPLIED OR PLATED FINISHES			DRAWN	DATE
DECIMALS J ± .05 KX ± .01 LXX ± .005			CHECKED	DATE
FRACTIONS ± 1/64 ANGLES ± 0° 30'			ELECT. DES.	DATE
			MECH. DES.	DATE
THE CONTENTS OF THIS DRAWING ARE THE EXCLUSIVE PROPERTY OF THE TECHNICAL MATERIEL CORP. ITS UNAUTHORIZED USE OR REPRODUCTION IN WHOLE OR IN PART IS STRICTLY FORBIDDEN.			REV. LTR.	

NOTES

LD2111
A