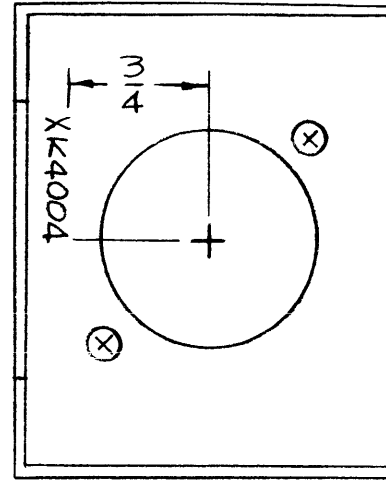
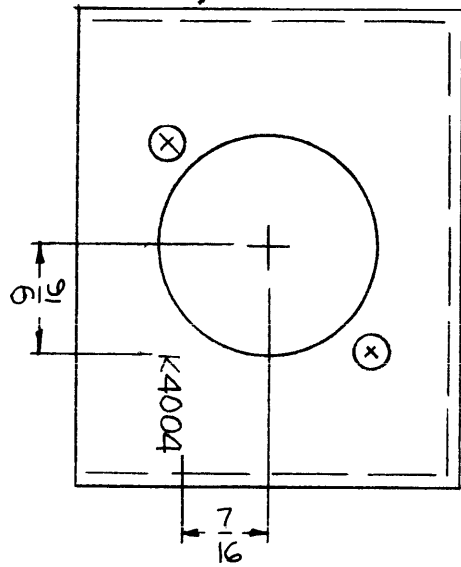
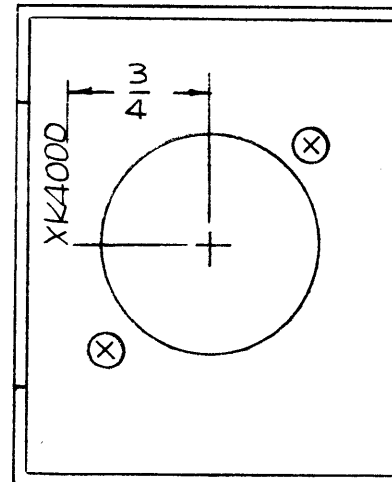
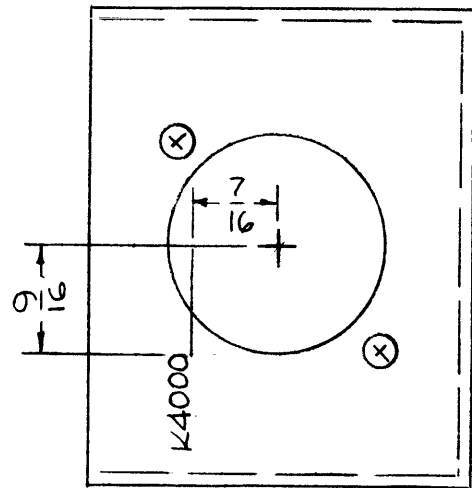


MARK TMC P/N LD2102-1-
 $\frac{1}{8}$ HIGH GOTHIC W/LATEST
 REV. LETTER.



LD2102-1



LD2102-2

MARK TMC P/N LD2102-2-
 $\frac{1}{8}$ HIGH GOTHIC W/LATEST
 REV. LETTER.

NOTES

IEA	TCP-3	A5486
IEA	TCP-1	A5486
1	TCP-2	A5486
Q'TY./UNIT	MODEL USED ON	ASS'Y. NO.
SCALE 1:1	CODE A	
THE CONTENTS OF THIS DRAWING ARE THE EXCLUSIVE PROPERTY OF THE TECHNICAL MATERIEL CORP. ITS UNAUTHORIZED USE OR REPRODUCTION IN WHOLE OR IN PART IS STRICTLY FORBIDDEN.		

LD2102

REVISIONS					
SYM	DESCRIPTION	DATE	E.M.N. NO.	DRAFT	CHKD APPD
X	EXPERIMENTAL RELEASE	6-16-66	X	RA	
Ø	ORIGINAL RELEASE FOR PRODUCTION	12/2/66	Ø	CV	

MARKING PROCESS: AS PER TMC SPECIFICATION S-727.
 LETTERING: 1/8 HIGH BLACK GOTHIC, LOCATED AS SHOWN.

REF: MS 2349.

REQ'D.	ITEM	PART NUMBER	DESCRIPTION	SYMBOL
F. BUDETTI LIST OF MATERIAL				
MATERIAL			THE TECHNICAL MATERIEL CORP. MAMARONECK, NEW YORK	
FINISH			TITLE MARKING, BRACKET, MTG. RELAY AS PER TMC SPEC. S727	
UNLESS OTHERWISE SPECIFIED DIMENSIONS ARE IN INCHES AND INCLUDE CHEMICALLY APPLIED OR PLATED FINISHES			DRAWN RA	DATE 6-16-66
DECIMALS .X ± .05 .XX ± .01 .XXX ± .005			CHECKED RA	DATE 11-29-66
FRACTIONS ± 1/64 ANGLES ± 0° 30'			ELECT. DES. RA	DATE
TOLERANCES			MECH. DES. RA	DATE
			FINAL APPROVAL RA DATE 12/2/66	
			LD2102	
			SHEET	
			REV. LTR.	