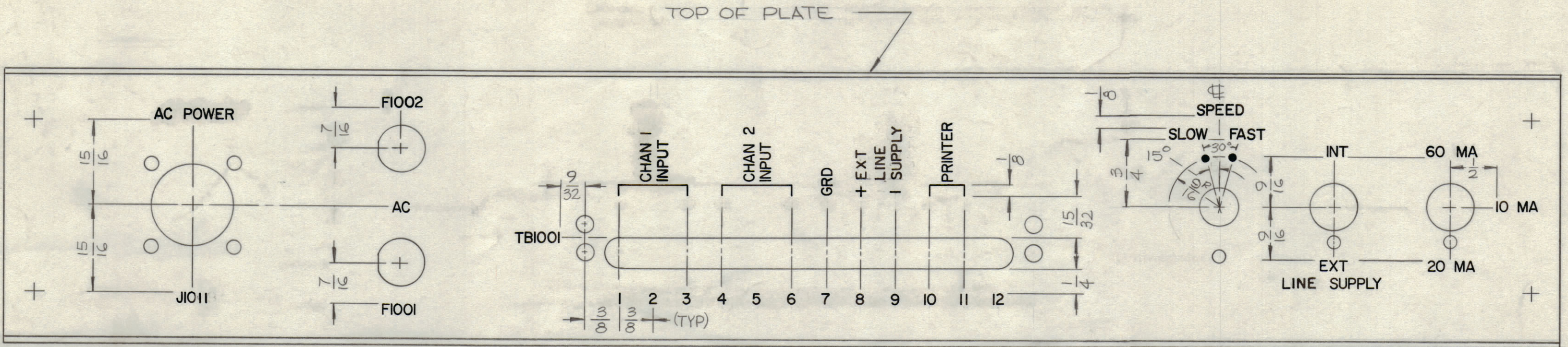
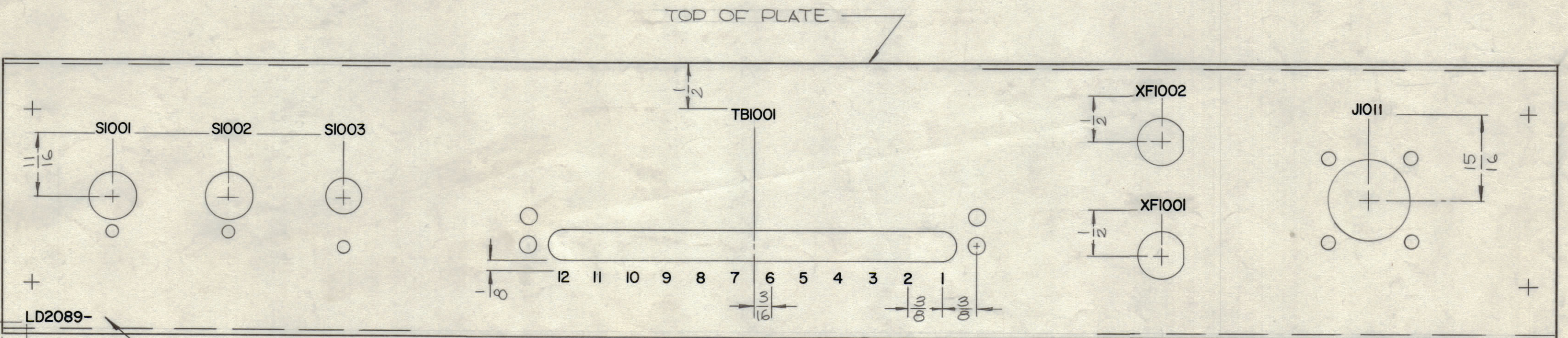


REVISIONS					
ZONE	SYM	DESCRIPTION	DATE	E.M.N. NO.	APPD
	X	EXPERIMENTAL RELEASE	5.27.66	-	WFO
	X1	MARKING CLARIFIED (TERM 8 & 9) & EXT LINE SUP	8-22-66	X1	JBC
	Ø	ORIGINAL RELEASE FOR PRODUCTION	9.27.66	Ø	RME



INTERIOR VIEW



EXTERIOR VIEW

LD2089-
 1/8 HIGH GOTHIC W/LATEST REVISION LETTER

UNLESS OTHERWISE SPECIFIED:
 MARKING PROCESS: AS PER TMC SPEC S727
 LETTERING: 1/8 HIGH BLACK GOTHIC, LOCATED AS SHOWN
 ALL LETTER GROUPS TO BE CENTERED ON HOLE CUTOUTS OR INDICATING LINES
 ALL DOTS 1/16 DIA BLACK FILLED

REF: M54928

REQ'D.	ITEM	PART NUMBER	DESCRIPTION	SYMBOL
DUDDLES LIST OF MATERIAL				
MATERIAL			THE TECHNICAL MATERIEL CORP. MAMARONECK, NEW YORK	
FINISH			TITLE MARKING, PLATE REAR	
UNLESS OTHERWISE SPECIFIED DIMENSIONS ARE IN INCHES AND INCLUDE CHEMICALLY APPLIED OR PLATED FINISHES		DRAWN	DATE	FINAL APPROVAL
DECIMALS .X ± .05 .XX ± .01 .XXX ± .005		CHECKED	DATE	DATE
FRACTIONS ± 1/64 ANGLES ± 0° 30'		ELECT. DES.	DATE	DATE
TOLERANCES		MECH. DES.	DATE	DATE
THE CONTENTS OF THIS DRAWING ARE THE EXCLUSIVE PROPERTY OF THE TECHNICAL MATERIEL CORP. ITS UNAUTHORIZED USE OR REPRODUCTION IN WHOLE OR IN PART IS STRICTLY FORBIDDEN.			SHEET	

NOTES

1	CFA-2	A5526
Q'TY./UNIT	MODEL USED ON	ASS'Y. NO.
SCALE 1/1	CODE	

LD2089