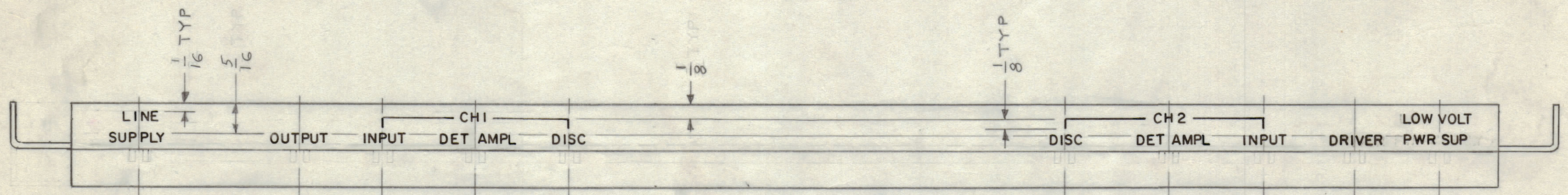
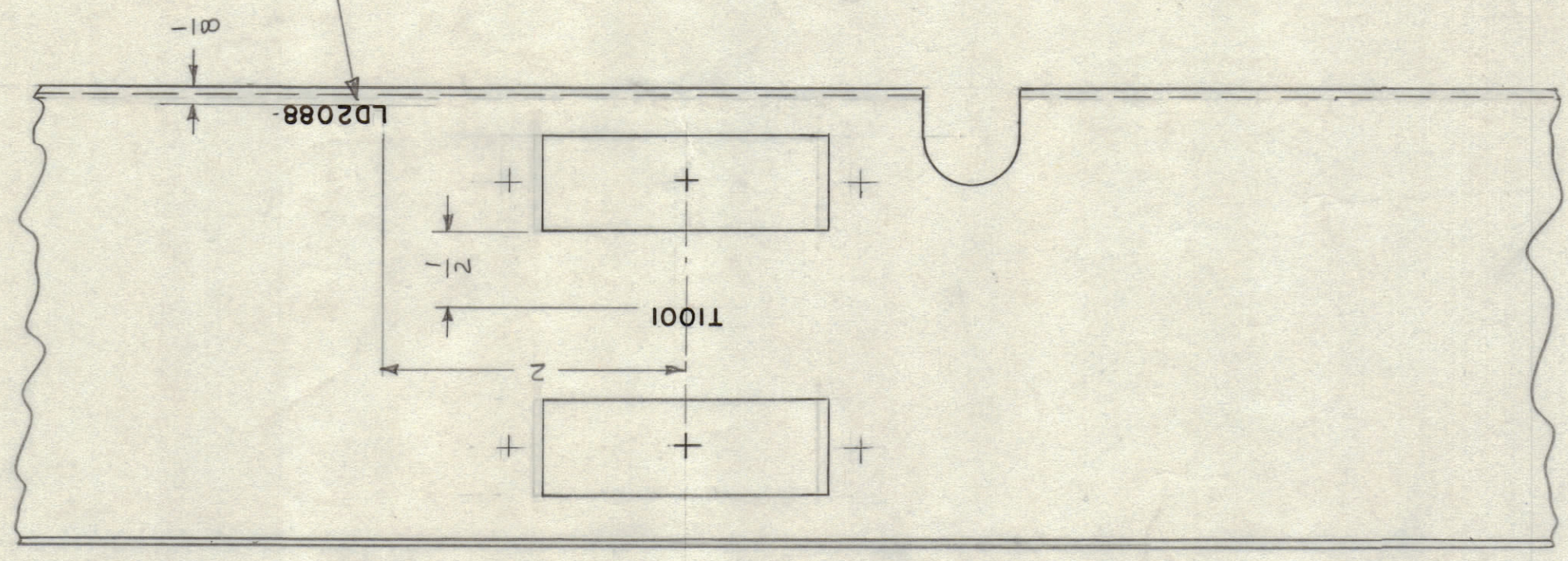


REVISIONS							
ZONE	SYM	DESCRIPTION	DATE	E.M.N. NO.	DRAFT	CHKD	APPD
	X	EXP RELEASE	8-23-66	X	JBC	JBC	
	Ø	ORIGINAL RELEASE FOR PRODUCTION	9-27-66	Ø	RME		
	A	PICTORIAL REVISED	2-25-67	Z1974	GDL		

MARK TMC P/N 1/8 HIGH GOTHIC
W/LATEST REV LETTER.



MARKING PROCESS: AS PER TMC SPECIFICATION S-727.
LETTERING: 1/8 HIGH BLACK GOTHIC, LOCATED AS SHOWN.

REF-MS 4925

REQ'D.	ITEM	PART NUMBER	DESCRIPTION	SYMBOL
LIST OF MATERIAL				
MATERIAL		THE TECHNICAL MATERIEL CORP. MAMARONECK, NEW YORK		
FINISH		TITLE MARKING, CHASSIS, REAR		
UNLESS OTHERWISE SPECIFIED DIMENSIONS ARE IN INCHES AND INCLUDE CHEMICALLY APPLIED OR PLATED FINISHES		DRAWN JBC	DATE 8-23-66	FINAL APPROVAL <i>[Signature]</i> DATE 9/21/66
DECIMALS .X ± .05 .XX ± .01 .XXX ± .005		TOLERANCES	± 1/64 ANGLES ± 0° 30'	ELECT. DES. A.R. Suddles MECH. DES. DATE 9-23-66
THE CONTENTS OF THIS DRAWING ARE THE EXCLUSIVE PROPERTY OF THE TECHNICAL MATERIEL CORP. ITS UNAUTHORIZED USE OR REPRODUCTION IN WHOLE OR IN PART IS STRICTLY FORBIDDEN.		DATE 9-23-66		DATE 9/21/66
NOTES		SHEET		REV. LTR.
		LD2088		A

LD2088
A