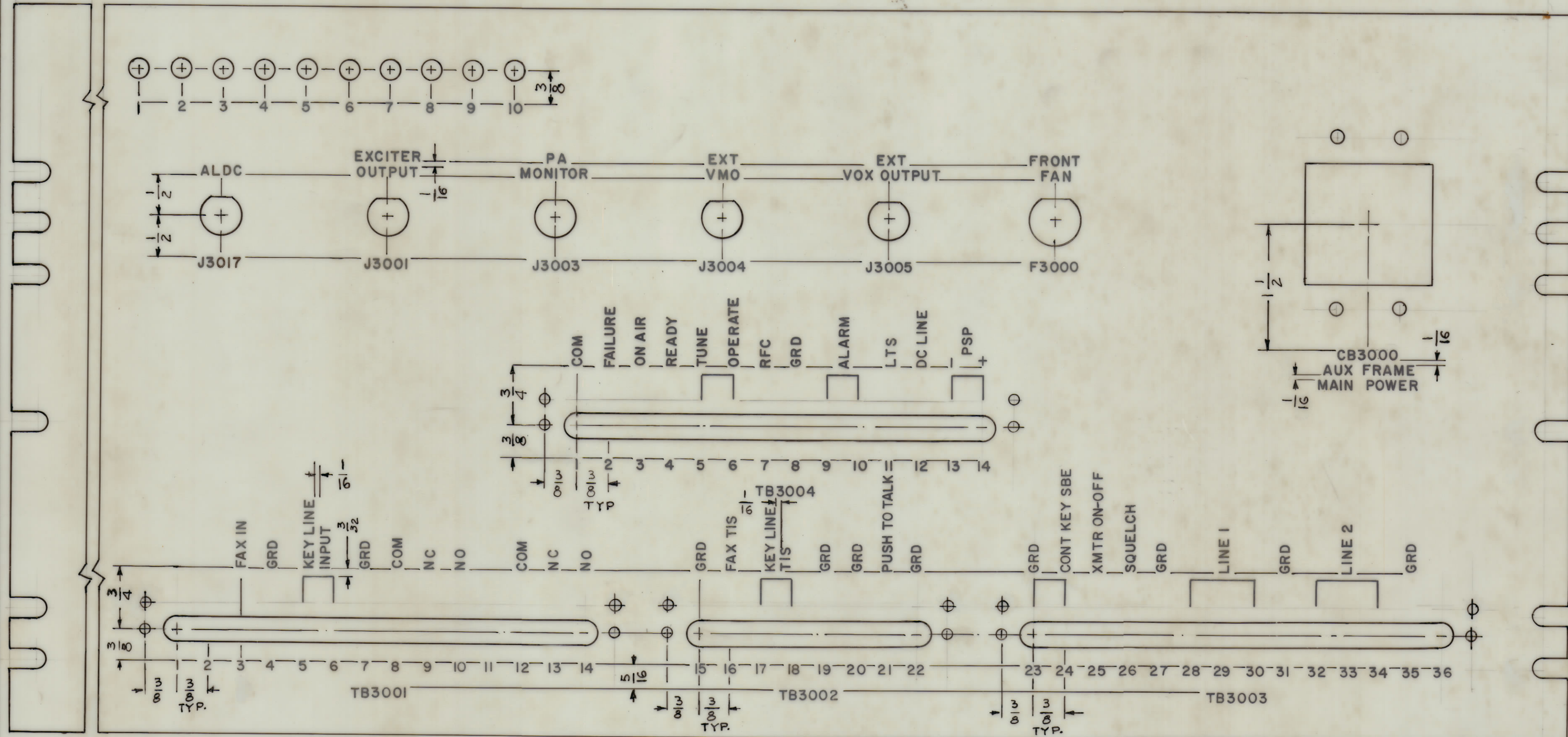


REVISIONS					
ZONE	SYM	DESCRIPTION	DATE	E.M.N. NO.	APPD
	Ø	ORIGINAL RELEASE FOR PRODUCTION	9/17/66	Ø	CV

TOP



~ FRONT VIEW ~

MARKING PROCESS: AS PER TMC SPECIFICATION S-727.  
 LETTERING: 1/8 HIGH BLACK GOTHIC, LOCATED AS SHOWN.

NOTES

1	GPT-10K BAs	
QTY/UNIT	MODEL USED ON	ASSY NO.
SCALE	CODE	
1:1		
THE CONTENTS OF THIS DRAWING ARE THE EXCLUSIVE PROPERTY OF THE TECHNICAL MATERIEL CORP. ITS UNAUTHORIZED USE OR REPRODUCTION IN WHOLE OR IN PART IS STRICTLY FORBIDDEN.		

REF: MS 4966

REQD	ITEM	PART NUMBER	DESCRIPTION	SYMBOL
LIST OF MATERIAL				
MATERIAL		THE TECHNICAL MATERIEL CORP. MAMARONECK, NEW YORK		
FINISH		TITLE MARKING, REAR PLATE COMP. MTG.		
UNLESS OTHERWISE SPECIFIED DIMENSIONS ARE IN INCHES AND INCLUDE CHEMICALLY APPLIED OR PLATED FINISHES		DRAWN G.D.L.	DATE 5-12-66	FINAL APPROVAL <i>[Signature]</i>
DECIMALS X ± .05 XX ± .01 XXX ± .005		CHECKED <i>[Signature]</i>	DATE 6-13-66	DATE 6-15-66
TOLERANCES FRACTIONS ± 1/64 ANGLES ± 0° 30'		ELECT. DES. <i>[Signature]</i>	DATE 6-15-66	DATE 6-15-66
		MECH. DES. <i>[Signature]</i>	DATE 6-15-66	DATE 6-15-66
			SHEET 1 of 2	REV. LTR.

LD 2086

