

7

6

5

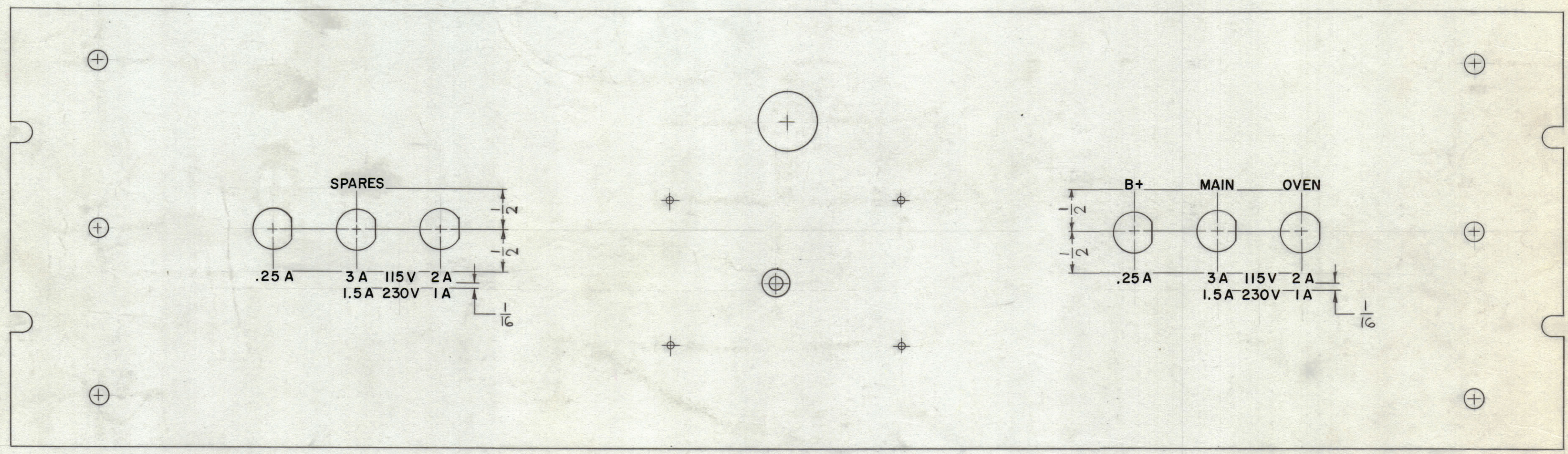
4

3

2

1

REVISIONS							
ZONE	SYM	DESCRIPTION	DATE	E.M.N. NO.	DRAFT	CHKD	APPD
	Ø	ORIGINAL RELEASE FOR PRODUCTION	7/2/66	Ø	HKA		



**ENGRAVING**  
(FRONT VIEW SHOWN)

- NOTE:**
- 1-ENGRAVING TO BE 1/8 HIGH GOTHIC WHITE FILLED.
  - 2-DEPTH OF STROKE .010.
  - 3-WIDTH OF STROKE .020.
  - 4-ENGRAVING AS PER TMC SPEC. S566.

REF: MS2807

REQ'D.	ITEM	PART NUMBER	DESCRIPTION	SYMBOL
<b>LIST OF MATERIAL</b>				
MATERIAL		THE TECHNICAL MATERIEL CORP.		
FINISH		POSE MAMARONECK, NEW YORK		
		TITLE		
		MARKING - FRONT PANEL		
UNLESS OTHERWISE SPECIFIED DIMENSIONS ARE IN INCHES AND INCLUDE CHEMICALLY APPLIED OR PLATED FINISHES		DRAWN	DATE	FINAL APPROVAL
		H. AUSTIN	5-10-66	[Signature]
		CHECKED	DATE	DATE
		[Signature]	6-1-66	7/11/66
		ELECT. DES.	DATE	
		MECH. DES.	DATE	
		SHEET		REV. LTR.
		LD2080		Ø

1	A1397	
Q'TY./UNIT	MODEL USED ON	ASS'Y. NO.
SCALE	CODE	
1:1		

THE CONTENTS OF THIS DRAWING ARE THE EXCLUSIVE PROPERTY OF THE TECHNICAL MATERIEL CORP. ITS UNAUTHORIZED USE OR REPRODUCTION IN WHOLE OR IN PART IS STRICTLY FORBIDDEN.

**NOTES**

LD2080 Ø