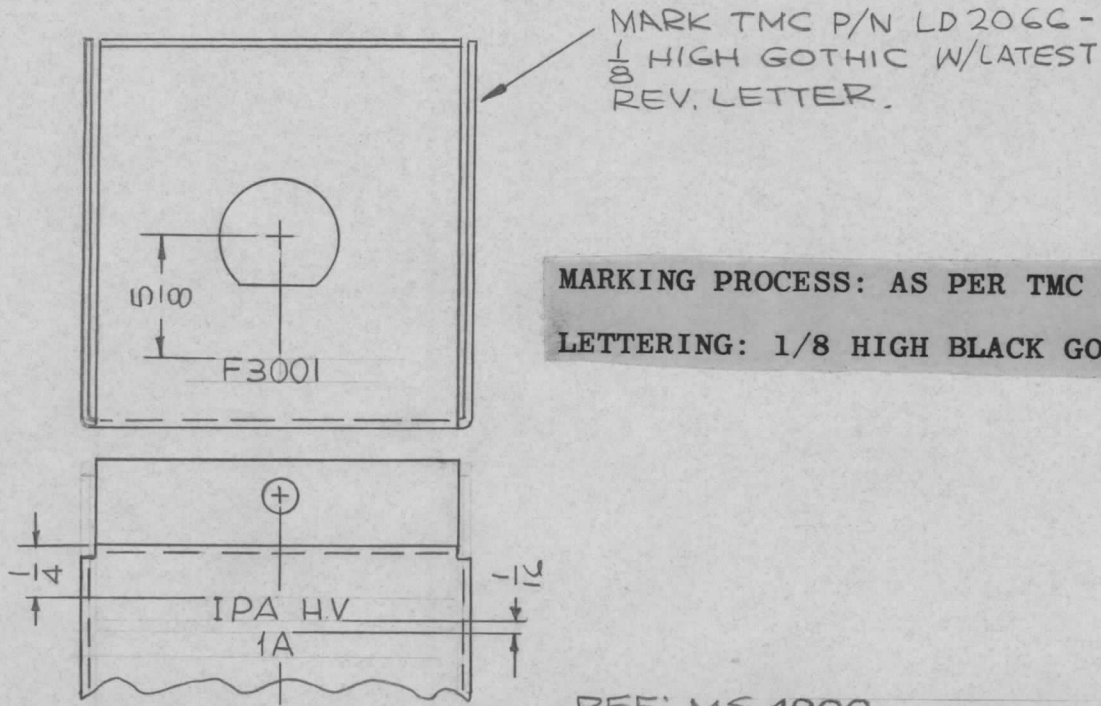


REQ. PER UNIT	USED ON			LD2066	B
	MODEL	ASS'Y. NO.	DATE		
1	GPT-10KLF	AX534	3-24-66		



MARKING PROCESS: AS PER TMC SPECIFICATION S-727.
 LETTERING: 1/8 HIGH BLACK GOTHIC, LOCATED AS SHOWN.

REF: MS 4900

							REQ. ITEM	PART NO.	F. BUDETTI	DESCRIPTION	SYMBOL	
B	REF. MS 4900 ADDED	11/30/67	CC	Emp	1/10	JHE			THE TECHNICAL MATERIEL CORP. MAMARONECK, NEW YORK			
A	CHGD ASSY. NO. FR. AX531 TO-534	8-18-66	CC	RME	gcb	gcb		STOCK SIZE	MARKING, BOX, MTG. FUSE			
Ø	ORIGINAL RELEASE FOR PRODUCTION	3-31-66	Ø	wfw				MATERIAL	MARKING PROCESS: AS PER TMC SPEC. S-727			
SYM	DESCRIPTION	DATE	CH. NO.	DRAFTS	CHECKER	ENG. APP.						
UNLESS OTHERWISE SPECIFIED DIMENSIONS ARE IN INCHES AND INCLUDE CHEMICALLY APPLIED OR PLATED FINISHES		SCALE 1:1										
DECIMALS .X ± .05 .XX ± .01 .XXX ± .005	TOLERANCES	FRACTIONS ± 1/64 ANGLES ± 0° 30'	CODE A				TYPE & TEMPER	HEAT TREAT. SPEC.	DRAWN aa	CHECKED RST	FINAL APPROVAL LD2066 B	
							FINISH & SPEC. NO.	ELEC. DES. APP.	MECH. DES. APP.			