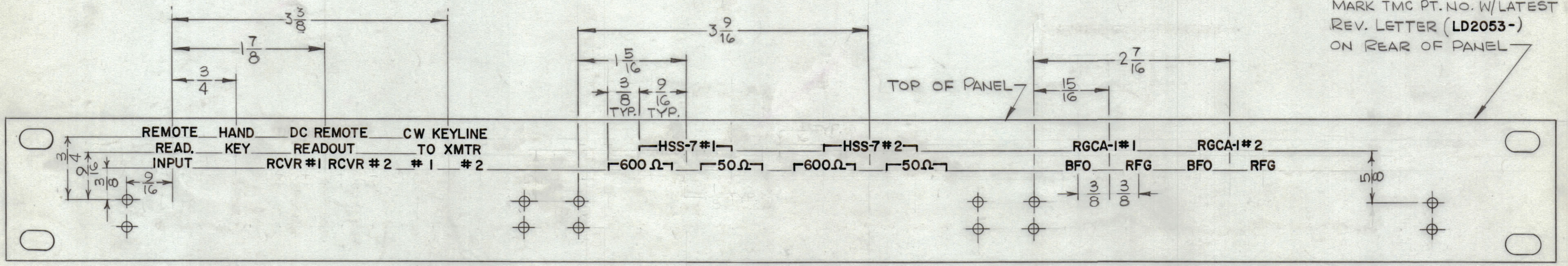


REVISIONS							
ZONE	SYM	DESCRIPTION	DATE	E.M.N. NO.	DRAFT	CHKD	APPD
	Ø	ORIGINAL Release For PRODUCTION	1-26-66	#	HKA		
	A	CHG'D DIMS FR 1/2 TO 3/8 & 1/16 TO 3/16	12-21-66	17528	RME	JCB	WES



MARK TMC PT. NO. W/LATEST REV. LETTER (LD2053-) ON REAR OF PANEL

FRONT OF PANEL SHOWN

HEIGHT OF LETTERS	DEPTH OF STROKE	WIDTH OF STROKE
1/8	.010	.020
LINES	.010	.015

- UNLESS OTHERWISE SPECIFIED:
- 1- ALL LETTERING TO BE GOTHIC WHITE FILLED.
 - 2- ALL LINES TO BE WHITE FILLED.
 - 3- ENGRAVING AS PER TMC SPEC. S-566.

LD2053
A

REF: MS4868

REQ'D.	ITEM	PART NUMBER	DESCRIPTION	SYMBOL
LIST OF MATERIAL				
MATERIAL		THE TECHNICAL MATERIEL CORP. MAMARONECK, NEW YORK		
FINISH		TITLE MARKING, PANEL, FRONT		
UNLESS OTHERWISE SPECIFIED DIMENSIONS ARE IN INCHES AND INCLUDE CHEMICALLY APPLIED OR PLATED FINISHES		DRAWN H. AUSTIN	DATE 1-21-66	FINAL APPROVAL <i>[Signature]</i>
DECIMALS .X ± .05 .XX ± .01 .XXX ± .005		CHECKED <i>[Signature]</i>	DATE 1-26-66	DATE 1-26-66
FRACTIONS ± 1/64 ANGLES ± 0° 30'		ELECT. DES. <i>[Signature]</i>	DATE 1-26-66	DATE 1-26-66
TOLERANCES		MECH. DES. <i>[Signature]</i>	DATE 1-26-66	DATE 1-26-66

CAB-20A		
Q'TY./UNIT	MODEL USED ON	ASS'Y. NO.
SCALE	CODE	

NOTES

THE CONTENTS OF THIS DRAWING ARE THE EXCLUSIVE PROPERTY OF THE TECHNICAL MATERIEL CORP. ITS UNAUTHORIZED USE OR REPRODUCTION IN WHOLE OR IN PART IS STRICTLY FORBIDDEN.