

IF IT IS FOUND DESIRABLE TO CHANGE ANY TOLERANCE OR OTHER DETAIL SPECIFIED ON THIS DRAWING NOTIFY THE PURCHASER PROMPTLY.

MAXIMUM ALLOWABLE TOLERANCES HAVE BEEN DETERMINED AND DEVIATIONS WILL BE CAUSE FOR REJECTION. REMOVE ALL BURRS AND SHARP EDGES

NOTICE TO PERSONS RECEIVING THIS DRAWING

THE TECHNICAL MATERIEL CORPORATION claims proprietary right in the material disclosed hereon. This drawing is issued in confidence for engineering information only and may not be reproduced or used to manufacture any like shown hereon without permission from THE TECHNICAL MATERIEL CORPORATION to the user. This drawing is loaned for mutual assistance and is subject to recall at any time.

Property of:

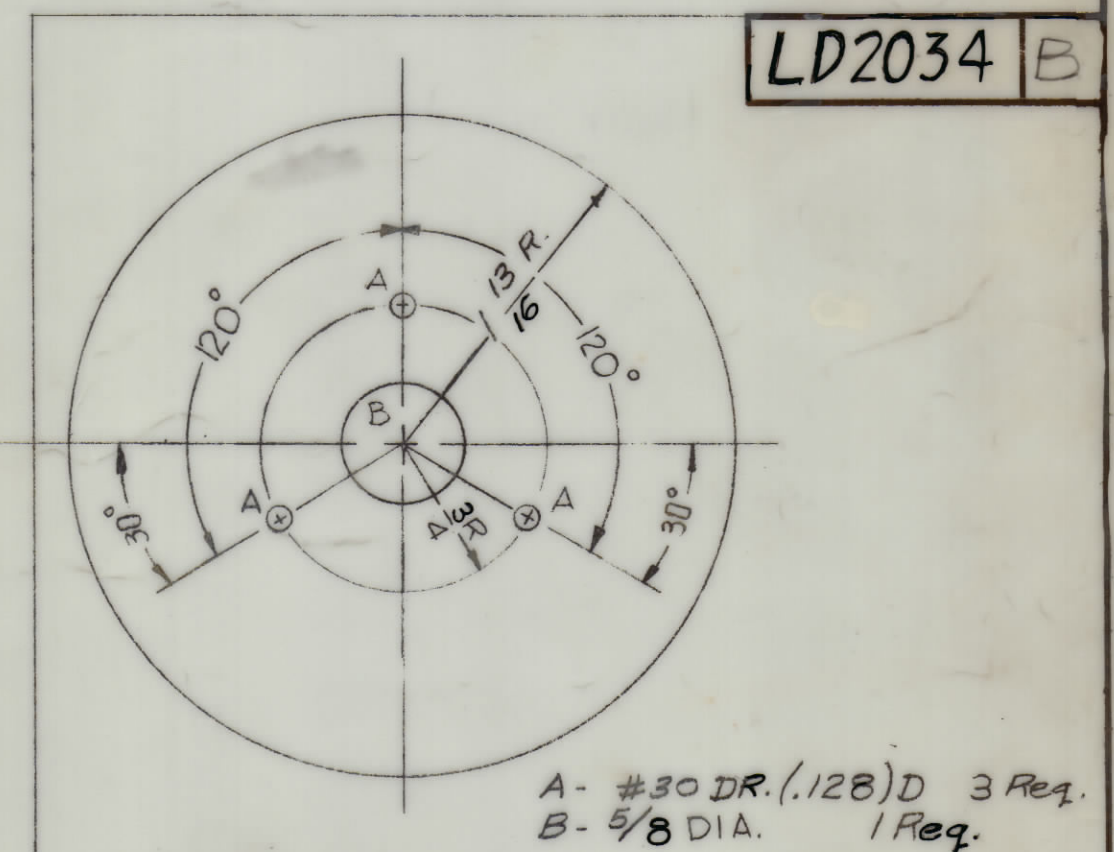
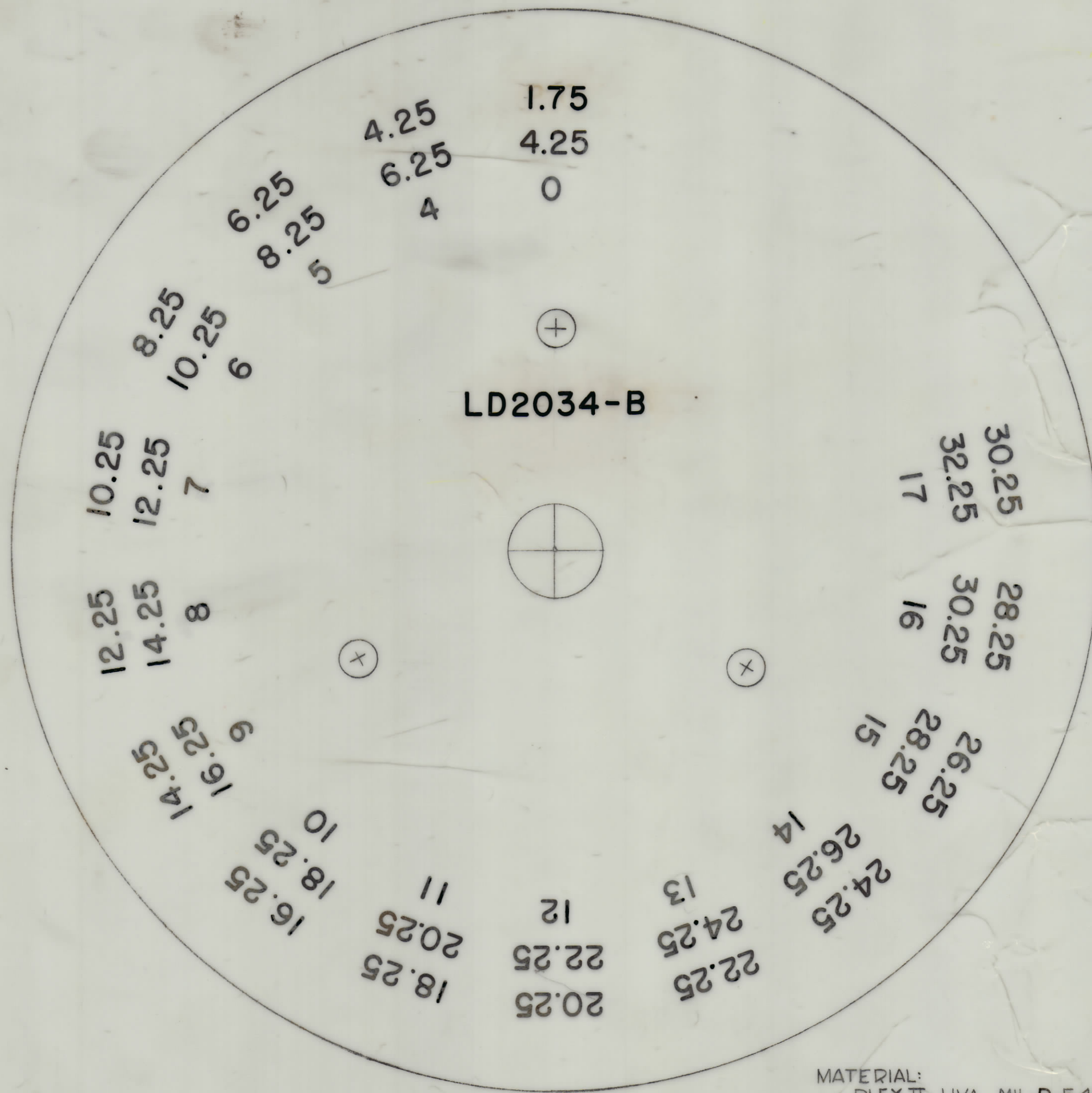
THE TECHNICAL MATERIEL CORPORATION  
MAMARONECK, NEW YORK

SPECIAL NOTES-

Drawing Scale 3 times Normal Size ( $3\frac{5}{8}$ " D)  
Reduction must be done accurately and w/o distortion.

Dial Calibration Circles Must be concentric to dial blank center. Outermost circle must be kept within .005"

Dial Machining to be made from Detail Below.



A - #30 DR. (.128) D 3 Req.  
B - 5/8 DIA. 1 Req.

MACHINING

MATERIAL: PLEX II UVA MIL-P-5425  
PRINT: BLACK NO'S. ON WHITE BACKGROUND

B	STK SIZE WAS .064	12.20.66	17527	WHD	WLD	
A	REDESIGNED & REVISED TO CLARIFY LETTERING	4/5/66	16065	G.D.L.		
ISSUE ITEM	CHANGED FROM	DATE	CN. NO	DRAFTS	CHECKER	ENG. APP.
TOLERANCES		SCALE: 3X		#240(3)		
ALL OTHERS	DEC. DIM. ± FRAC. DIM. ± ANGULAR DIM. ±	DRILL, UNFIN. COMMERCIAL STOCK SIZES AND MANUFACTURERS TOLERANCES ARE NOT INCLUDED.				

1	SBE-8,9,10	AX621	A-1809	4.4.66
REQ PER UNIT	MODEL	PROJECT NO.	ASSY. NO.	DATE
USED ON				

REQ. ITEM	PART NO.	DESCRIPTION	SYMBOL
.060 ± .012 THK.		THE TECHNICAL MATERIEL CORP. MAMARONECK, NEW YORK	
SEE NOTE		LETTERING, HF XTAL DIAL	
MATERIAL	WEIGHT PER PC.	(SBE-8,9,10)	
SEE NOTE		WLA 4/4/66	
TYPE & TEMPER		DRAWN	ELEC. DES. APP. / MECH. DES. APP.
		JCB	
HEAT TREAT. SPEC.		CHECKED	FINAL APPROVAL
White Translucent			
FINISH & SPEC. NO.			LD2034 B