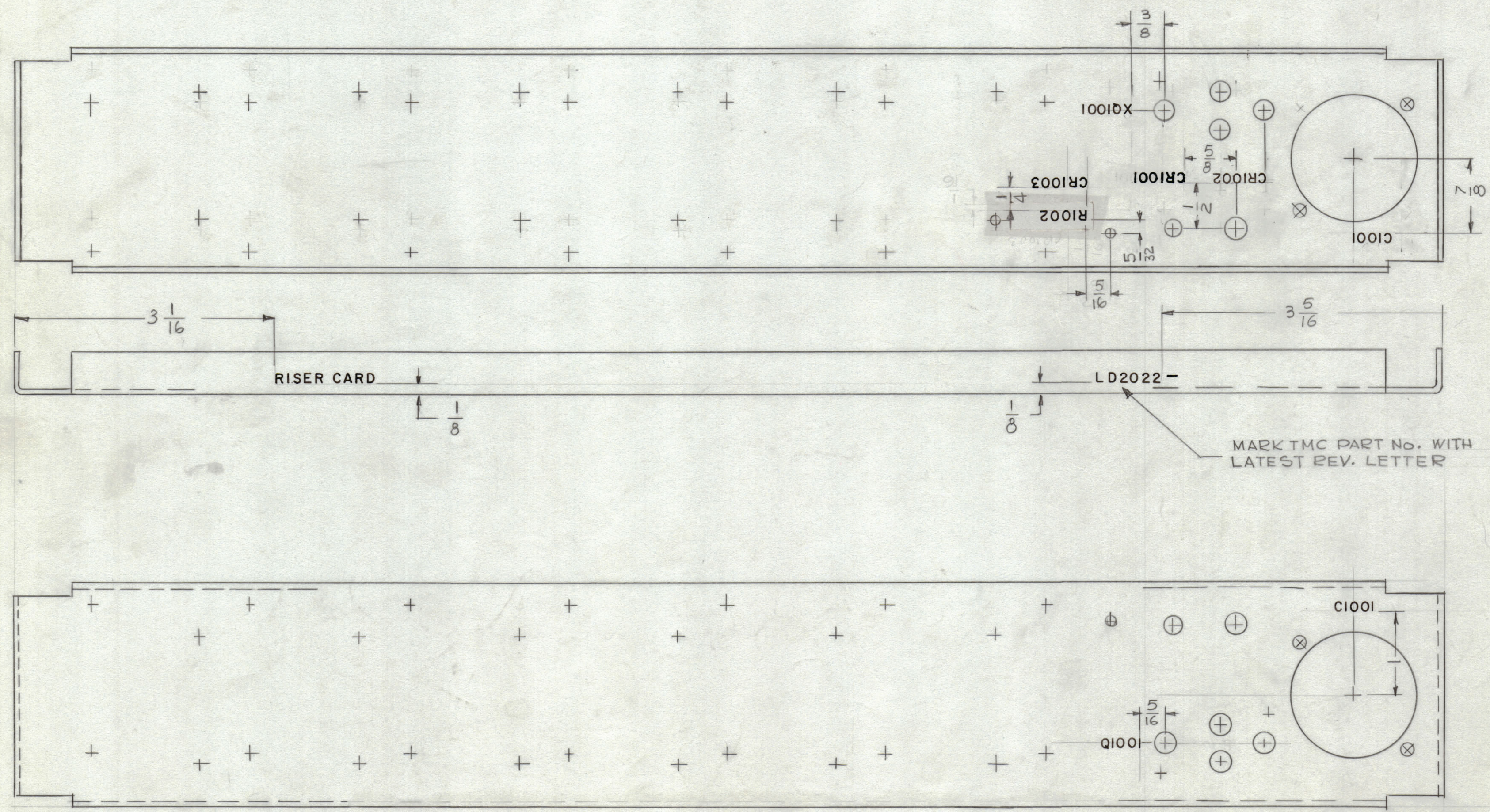


REVISIONS					
ZONE	SYM	DESCRIPTION	DATE	E.M.N. NO.	APPD
	Ø	ORIGINAL RELEASE FOR PRODUCTION	2/3/66		



MARKING PROCESS: AS PER TMC SPECIFICATION S-727.
 LETTERING: 1/8 HIGH BLACK GOTHIC, LOCATED AS SHOWN.

NOTES

1	CDN-3	
Q'TY./UNIT	MODEL USED ON	ASS'Y. NO.
SCALE 1:1	CODE A	

THE CONTENTS OF THIS DRAWING ARE THE EXCLUSIVE PROPERTY OF THE TECHNICAL MATERIEL CORP. ITS UNAUTHORIZED USE OR REPRODUCTION IN WHOLE OR IN PART IS STRICTLY FORBIDDEN.

REQ'D.	ITEM	PART NUMBER	DESCRIPTION	SYMBOL
POSE LIST OF MATERIAL				
MATERIAL		THE TECHNICAL MATERIEL CORP. MAMARONECK, NEW YORK		
FINISH		TITLE MARKING, CHASSIS REAR		
DRAWN G.D.L.		DATE 1-4-66	FINAL APPROVAL	
CHECKED JCS		DATE 1-18-66	LD 2022	
ELECT. DES.		DATE	REV. LTR.	
MECH. DES.		DATE 2-4-66	SHEET	

LD2022 Ø

IF IT IS FOUND DESIRABLE TO CHANGE ANY TOLERANCE OR OTHER DETAIL SPECIFIED ON THIS DRAWING NOTIFY THE PURCHASER PROMPTLY.

DIMENSIONS IN INCHES UNLESS OTHERWISE SPECIFIED

LD2022 φ

REQ.	ITEM	PART NO.	DESCRIPTION	SYMBOL
------	------	----------	-------------	--------

MAXIMUM ALLOWABLE TOLERANCES HAVE BEEN DETERMINED AND DEVIATIONS WILL BE CAUSE FOR REJECTION. REMOVE ALL BURRS AND SHARP EDGES.

DIMENSIONS IN INCHES UNLESS OTHERWISE SPECIFIED

ISSUE	ITEM	CHANGED FROM	DATE	CN. NO.	DRAFTS	CHECKER	ENG. APP.
φ		PROD RELEASE	MAR 27/71		JR	φ	φ

RISER CARD

LD2022 -

C1001

C1001

R1002

CR1002

CR1001

CR1003

Q1001

XQ1001

REF: MS4814

STOCK SIZE		TMC (Canada) LIMITED OTTAWA ONTARIO	
MATERIAL		MARKING CHASSIS REAR	
WEIGHT PER PC		J. Rescorla	
TYPE & TEMPER		DRAWN	MECH. DES. APP.
HEAT TREAT. SPEC.		CHECKED	FINAL APPROVAL
FINISH & SPEC. NO.		SHT 2 of 2 LD2022 φ	

CDN-3	118/71	27 MAR '71
MODEL	PROJECT NO.	DATE

TOLERANCES UNLESS OTHERWISE SPECIFIED		SCALE: 2/1
ALL	DEC. DIM. ± .05	DRILL, PUNCH, COMMERCIAL STOCK
OTHERS	FRAC. DIM. ± 1/32 .XX ± .01	SIZES AND MANUFACTURERS
	ANGULAR DIM. ± 0° 30' .XXX ± .005	TOLERANCES ARE NOT INCLUDED