

REQ. PER UNIT	USED ON			LD2019 \emptyset
	MODEL	ASS'Y. NO.	DATE	
1	CSS-3		11-17-65	

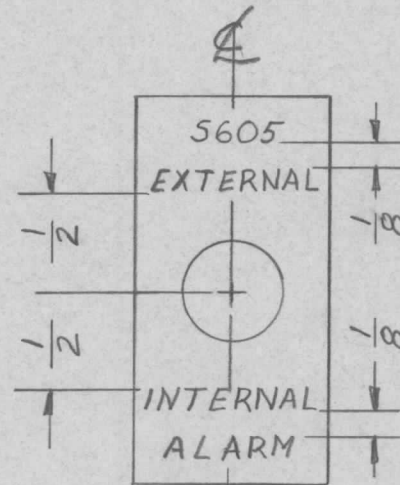
MARKING PROCESS: AS PER TMC SPECIFICATION S-727.

LETTERING: 1/8 HIGH BLACK GOTHIC, LOCATED AS SHOWN.

NOTE:

STAMP TMC PART NO. 1/8 HIGH GOTHIC ON REAR OF PANEL

WITH LATEST REVISION LETTERS



FRONT VIEW SHOWN

REF: M54807

REQ.	ITEM	PART NO.	DESCRIPTION				SYMBOL
			THE TECHNICAL MATERIEL CORP. MAMARONECK, NEW YORK				
			MARKING, PLATE, ALARM SWITCH				
			MATERIAL				
			DRAWN <i>BPM</i> CHECKED <i>JLH 11/17/65</i> FINAL APPROVAL <i>R. V. Kelly 11/17/65</i>				
			FINISH & SPEC. NO.				
			ELEC. DES. APP. MECH. DES. APP.				
			LD2019 \emptyset				

SYM	DESCRIPTION	DATE	CH. NO.	DRAFTS	CHECKER	ENG. APP.
\emptyset	ORIGINAL RELEASE	11/17/65				

DECIMALS	FRACTIONS	CODE
.X \pm .05	\pm 1/64	
.XX \pm .01	ANGLES \pm 0° 30'	
.XXX \pm .005		

UNLESS OTHERWISE SPECIFIED DIMENSIONS ARE IN INCHES AND INCLUDE CHEMICALLY APPLIED OR PLATED FINISHES

TOLERANCES

SCALE