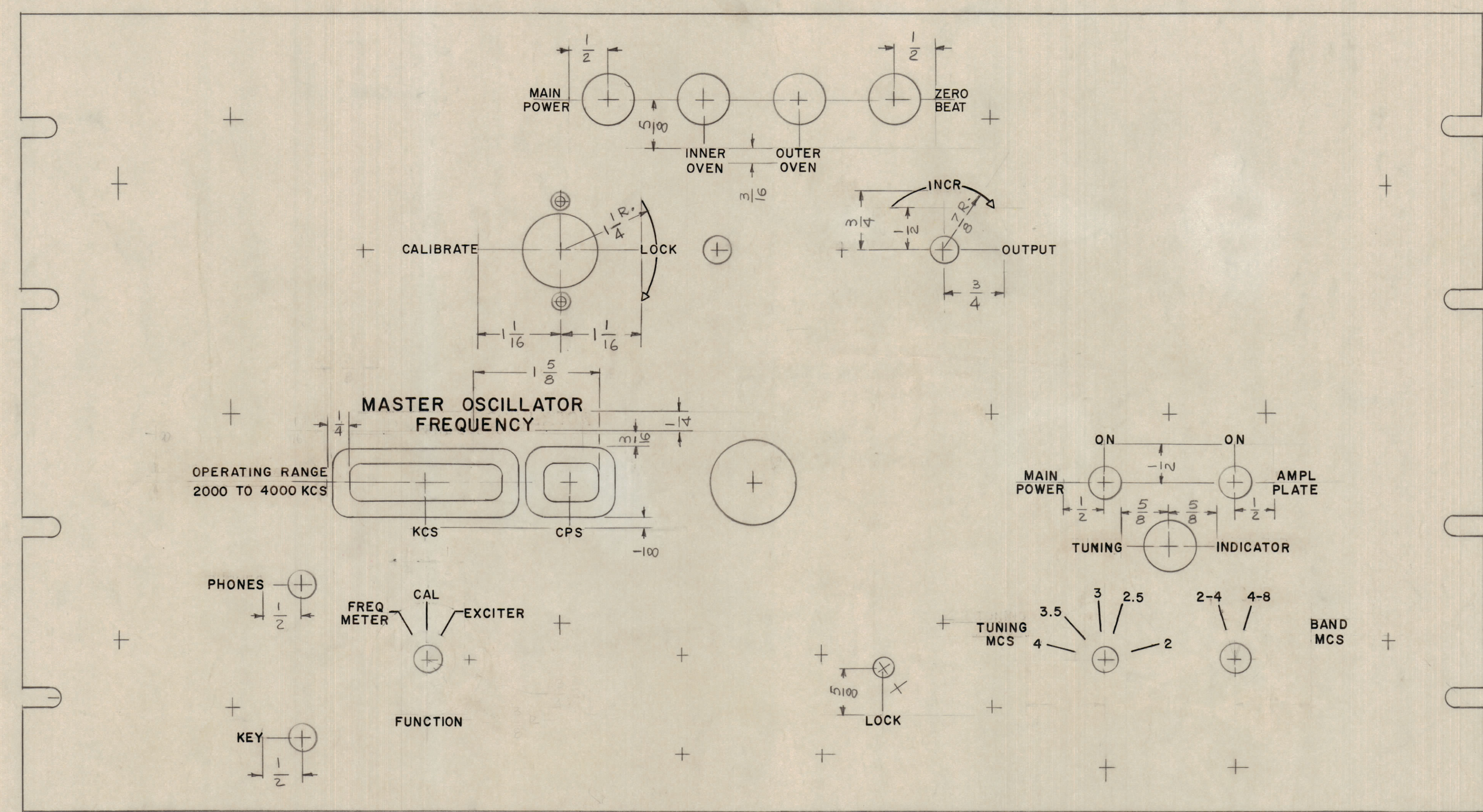


REVISIONS						
ZONE	SYM	DESCRIPTION	DATE	E.M.N. NO.	DRAFT	APPRO
Ø		ORIGINAL RELEASE FOR PROD	3/1/66	9		LD



UNLESS OTHERWISE SPECIFIED

"MASTER OSCILLATOR FREQUENCY" TO BE 3/16 HIGH GOTHIC WHITE FILLED

"OPERATING RANGE" TO BE 1/8 HIGH GOTHIC RED  
"2000 TO 4000 KCS" TO BE 1/8 HIGH GOTHIC RED

ALL ARROWHEADS AND TAILS TO BE WHITE OUTLINE FILL.

ALL OTHER LETTERS AND NUMERALS TO BE 1/8 HIGH GOTHIC, WHITE FILLED

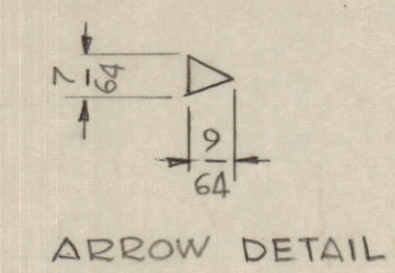
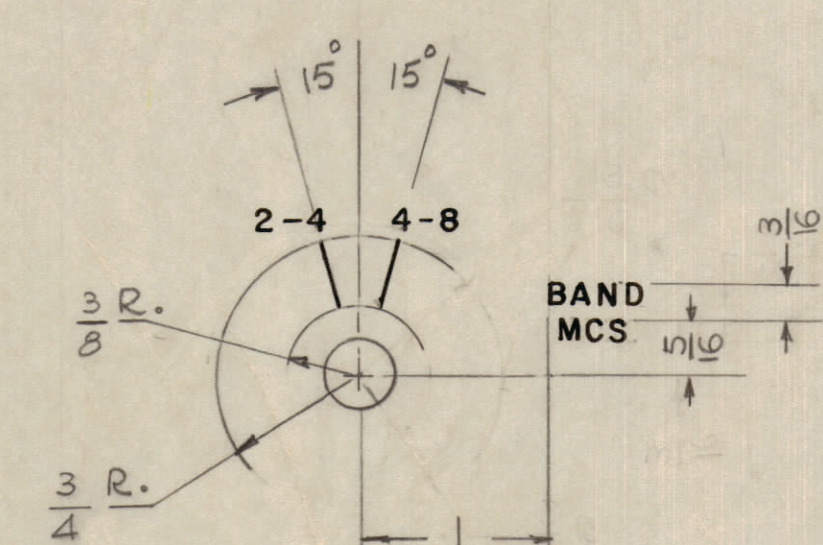
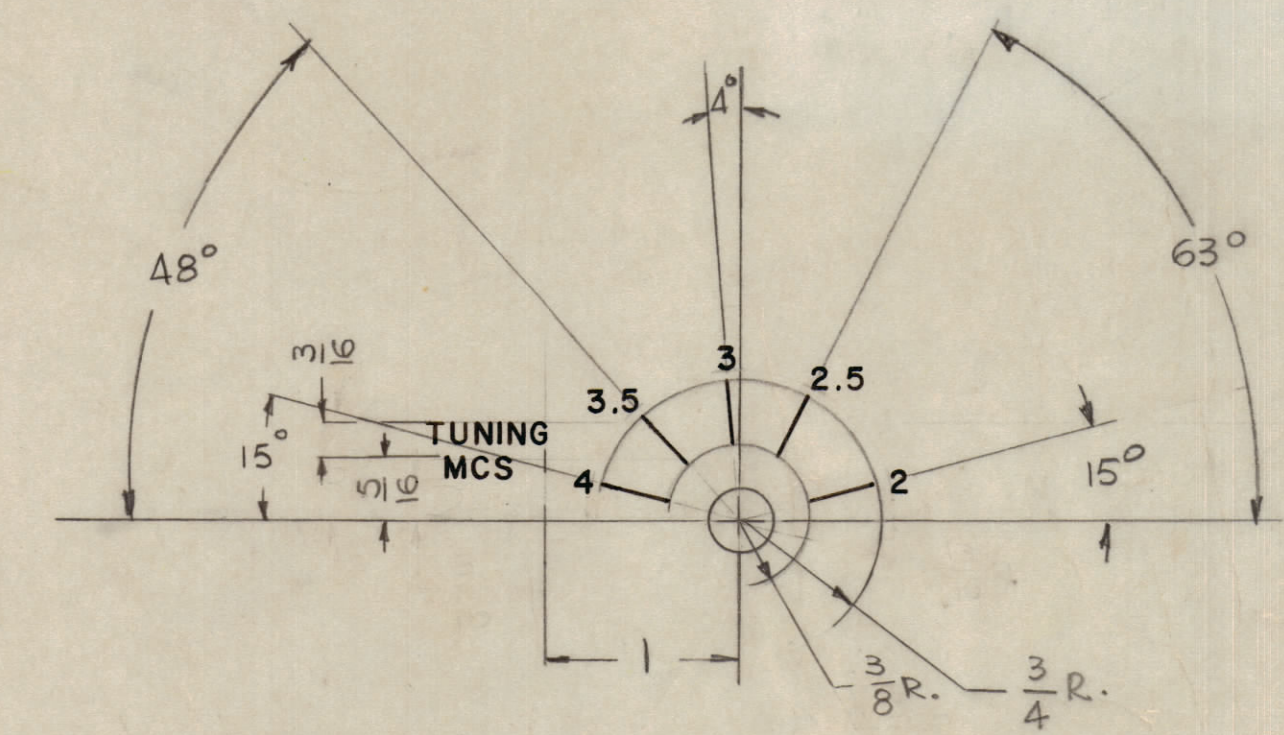
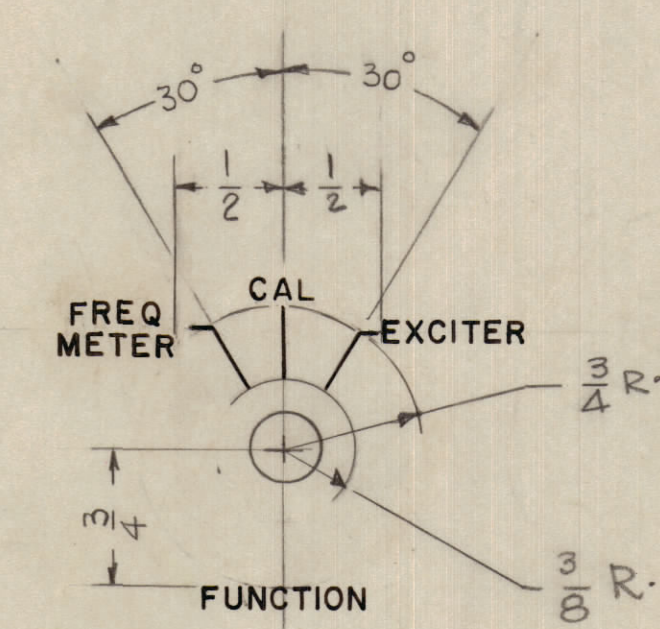
ALL LINES TO BE WHITE FILLED

ALL LETTER GROUPS TO BE CENTERED ON HOLES.

ENGRAVING TO BE GOTHIC WHITE FILLED SIZE SHOWN ON CHART

HEIGHT OF LETTERS	DEPTH OF STROKE	WIDTH OF STROKE
1/8	.010	.015
3/16	.010	.020
LINES	.010	.015
ARROWHEAD AND TAILS	.010	

FRONT VIEW SHOWN



REF: MS 554

REQ'D	ITEM	PART NUMBER	DESCRIPTION	SYMBOL
POSE				
LIST OF MATERIAL				
MATERIAL		THE TECHNICAL MATERIEL CORP. MAMARONECK, NEW YORK		
FINISH		TITLE MARKING, FRONT PANEL		
QTY/UNIT	MODEL USED ON	ASBY. NO.		
SCALE	CODE			
1:1	A			
UNLESS OTHERWISE SPECIFIED DIMENSIONS ARE IN INCHES AND INCLUDE CHEMICALLY APPLIED OR PLATED FINISHES			DRAWN	DATE
			G.D.L.	12-10-65
			CHECKED	DATE
			J.P.B.	3/10/66
DECIMALS .X ± .05 .XX ± .01 .XXX ± .005			ELECT. DES.	DATE
FRACTIONS ± 1/64 ANGLES ± 0° 30'			MECH. DES.	DATE
			LD2015	
			SHEET 1 OF 2	REV. LTR.

NOTES

THE CONTENTS OF THIS DRAWING ARE THE EXCLUSIVE PROPERTY OF THE TECHNICAL MATERIEL CORP. ITS UNAUTHORIZED USE OR REPRODUCTION IN WHOLE OR IN PART IS STRICTLY FORBIDDEN.

APPROVAL NO. 4408

LD2015