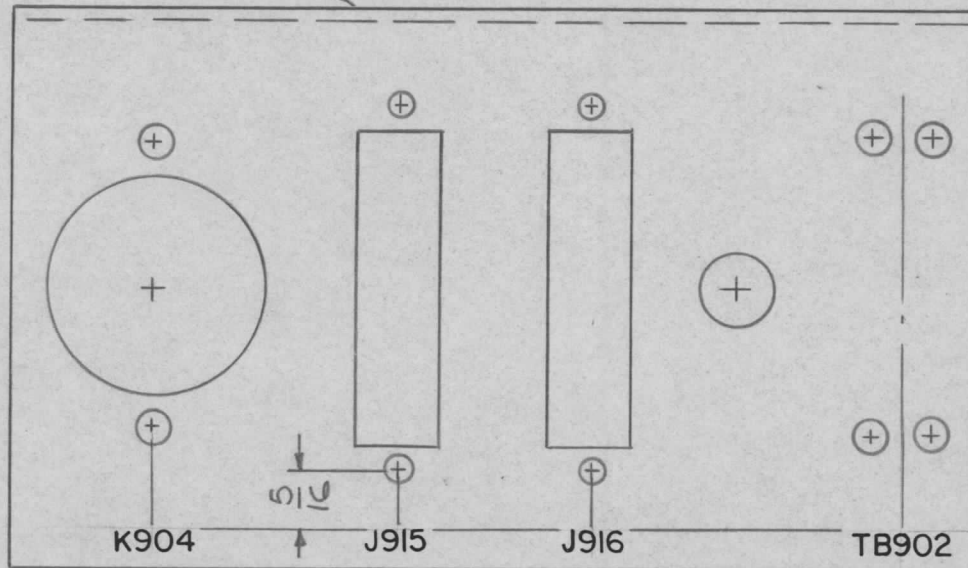


MARK TMC P/N (LD2003-)
 1/8 HIGH GOTHIC W/LATEST
 REV. LETTER.

REQ. PER UNIT	USED ON			LD2003	Ø
	MODEL	ASS'Y. NO.	DATE		
1	TST-10K		9-3-65		



MARKING PROCESS: AS PER TMC SPECIFICATION S-727.
 LETTERING: 1/8 HIGH BLACK GOTHIC, LOCATED AS SHOWN.

REF: MS4706

							REQ. ITEM	PART NO.	F. BUDETTI	DESCRIPTION	SYMBOL	
Ø	ORIGINAL RELEASE	2/15/66							THE TECHNICAL MATERIEL CORP. MAMARONECK, NEW YORK			
XI	MS 4706 DELETED FROM TMC PART NO.	2-9-66	M	Jc					MARKING, BRACKET MTG. COMPONENTS			
SYM	DESCRIPTION	DATE	CH. NO.	DRAFTS	CHECKER	ENG. APP.			MARKING PROCESS: AS PER TMC SPEC S727			
UNLESS OTHERWISE SPECIFIED DIMENSIONS ARE IN INCHES AND INCLUDE CHEMICALLY APPLIED OR PLATED FINISHES		SCALE	1:1									
DECIMALS .X ± .05 .XX ± .01 .XXX ± .005	TOLERANCES	FRACTIONS ± 1/64 ANGLES ± 0° 30'	CODE A					TYPE & TEMPER	HEAT TREAT. SPEC.	DRAWN	CHECKED	FINAL APPROVAL
							FINISH & SPEC. NO.	ELEC. DES. APP.	MECH. DES. APP.	LD2003 Ø		