

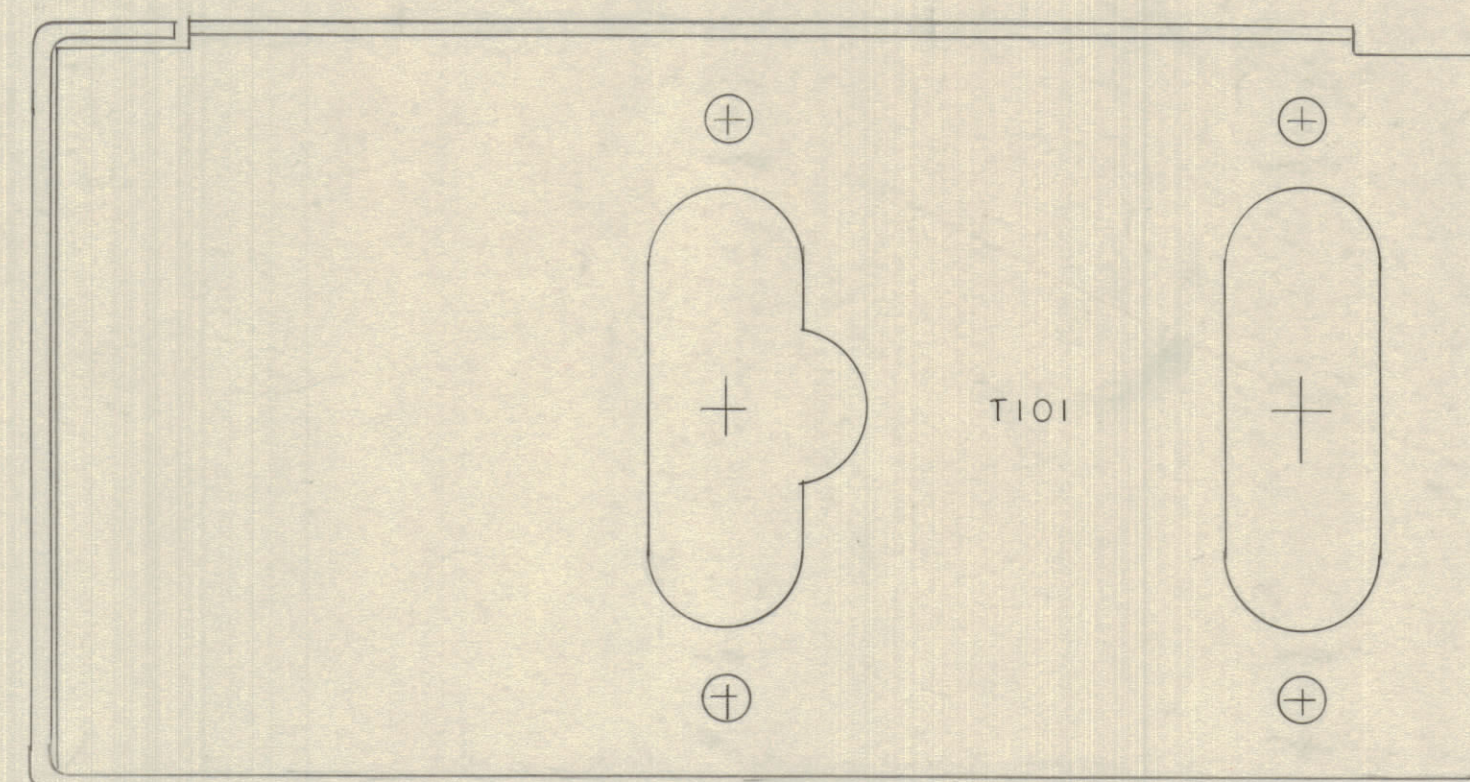
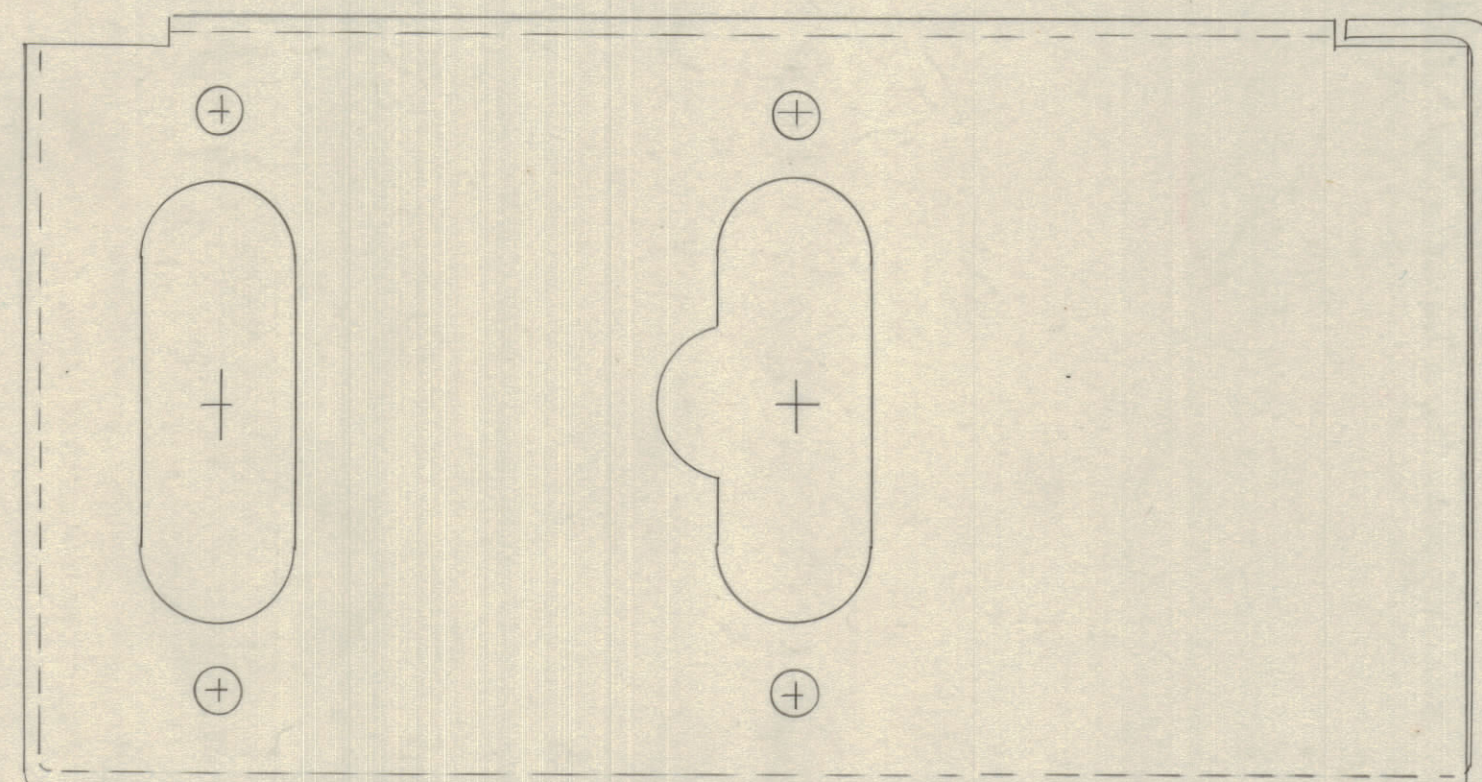
IF IT IS FOUND DESIRABLE TO CHANGE ANY TOLERANCE OR OTHER DETAIL SPECIFIED ON THIS DRAWING NOTIFY THE PURCHASER PROMPTLY.
 MAXIMUM ALLOWABLE TOLERANCES HAVE BEEN DETERMINED AND DEVIATIONS WILL BE CAUSE FOR REJECTION. REMOVE ALL BURRS AND SHARP EDGES

NOTICE TO PERSONS RECEIVING THIS DRAWING

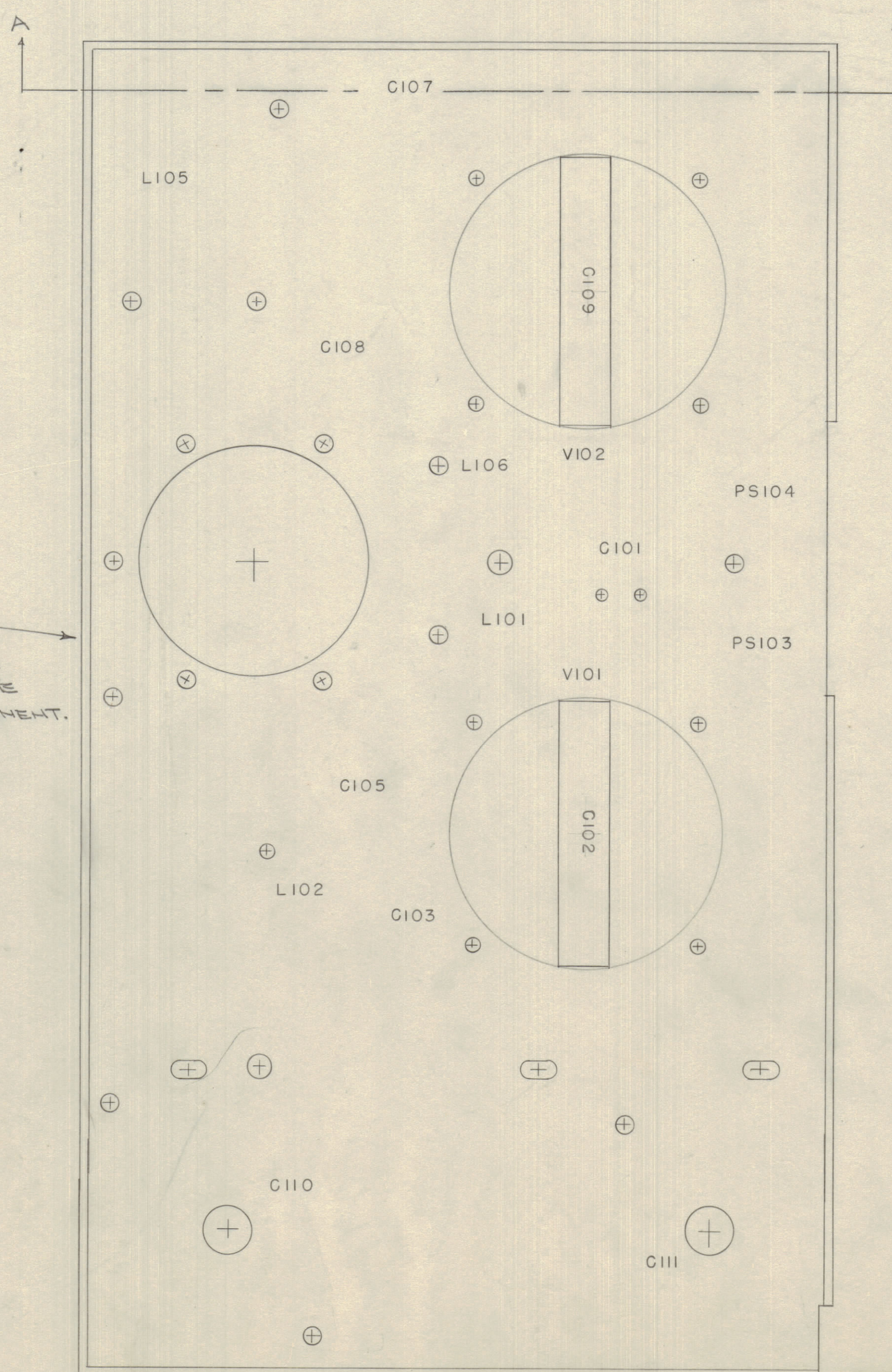
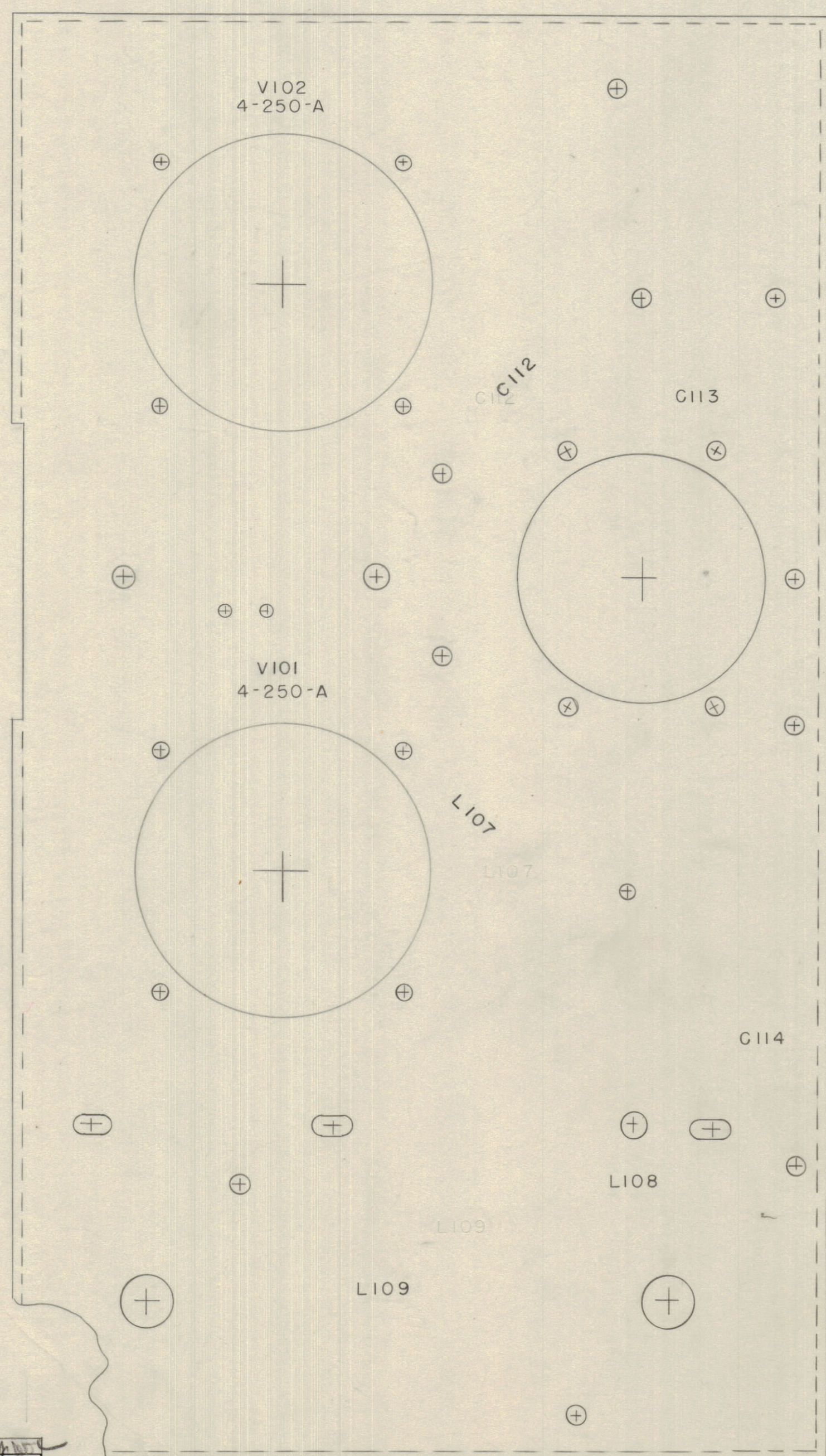
THE TECHNICAL MATERIEL CORPORATION claims proprietary right in the material disclosed herein. This drawing is issued in confidence for engineering information only and may not be reproduced or used to manufacture anything shown hereon without permission from THE TECHNICAL MATERIEL CORPORATION to the user. This drawing is loaned for mutual assistance and is subject to recall at any time.

Property of:

THE TECHNICAL MATERIEL CORPORATION
 MAMARONECK, NEW YORK



"A A"
SECTION



L114 →
 STAMP ON SIDE
 SLIGHTLY ABOVE
 OR BELOW COMPONENT.

LETTERING TO BE 1/8 HIGH BLACK GOTHIC.
 STAMPING TO BE DONE AFTER ASSEMBLY
 OF COMPONENTS

ISSUE	ITEM	CHANGED FROM	DATE	CH. NO.	DRAFTS	CHECKER	ENG. APP.
A	1	L114 ADDED					

TOLERANCES: DEC. DIM. ±, PRAC. DIM. ±, ANGULAR DIM. ±

SCALE: DRILL PUNCH, COMMERCIAL STOCK SIZES AND MANUFACTURERS TOLERANCES ARE NOT INCLUDED.

1	RTF	E-211		5-7-56
REQ PER UNIT	MODEL	PROJECT NO.	ASS'Y. NO.	DATE
				USED ON

REF. DWG. MS-688

REQ. ITEM	PART NO.	DESCRIPTION	SYMBOL
THE TECHNICAL MATERIEL CORP. MAMARONECK, NEW YORK			
LETTERING, FINAL CHASSIS, RF			
MATERIAL	WEIGHT PER PC.	P/A.	GPT-750
TYPE & TEMPER	ADD. 5-1-56	MECH. DES. APP.	
HEAT TREAT. SPEC.	1/16	ELEC. DES. APP.	A.T.J.
	CHECKED	FINAL APPROVAL	
FINISH & SPEC. NO.			LD-288 A

LD-288 A