

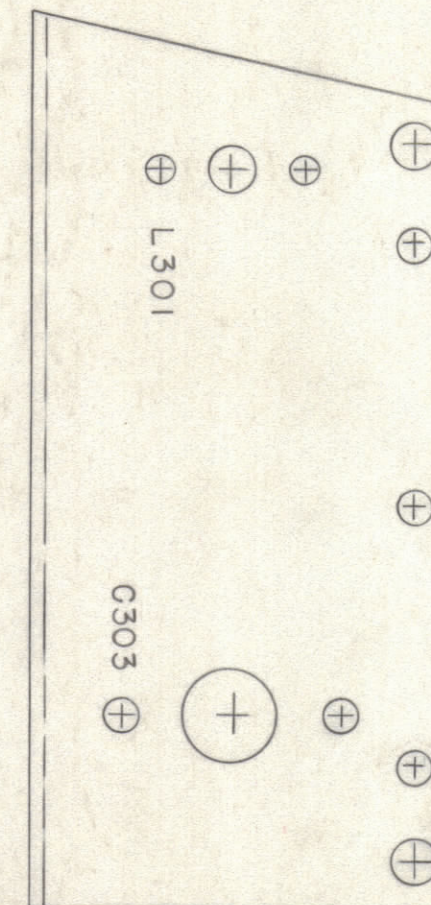
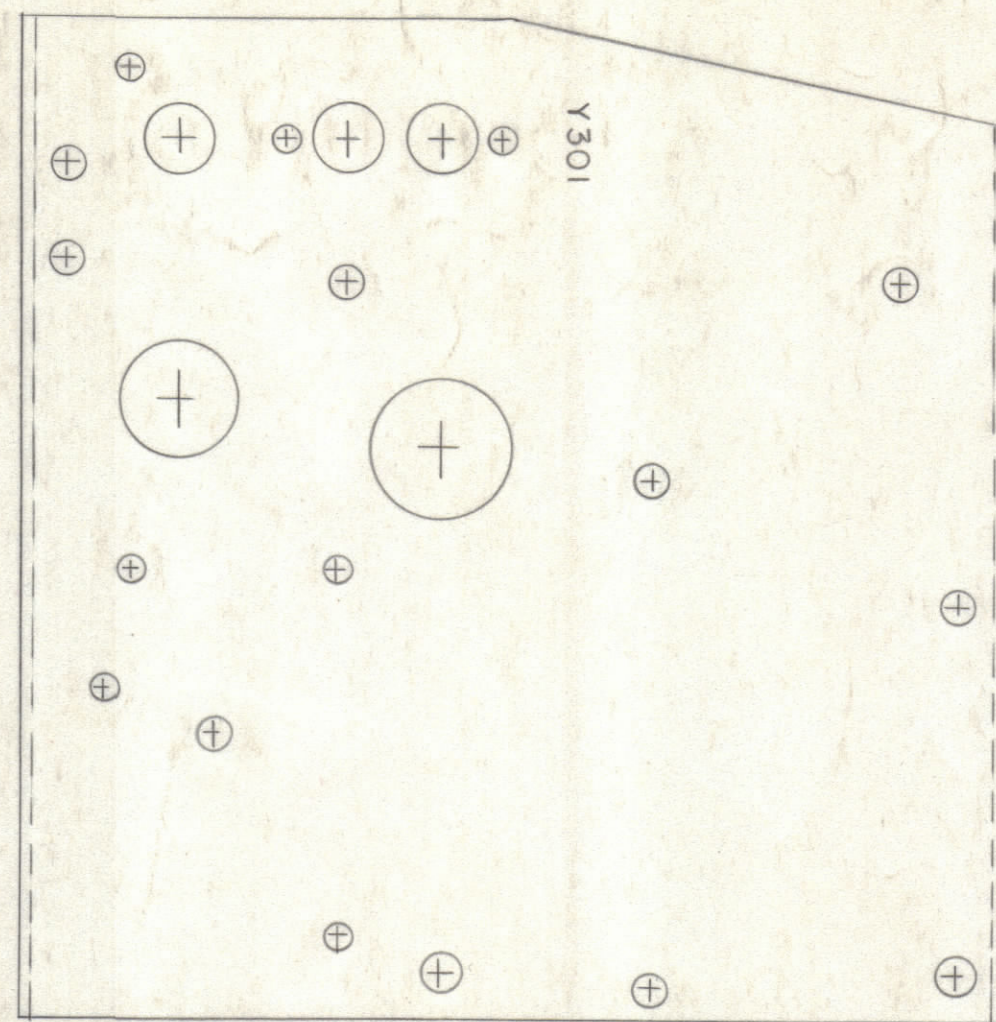
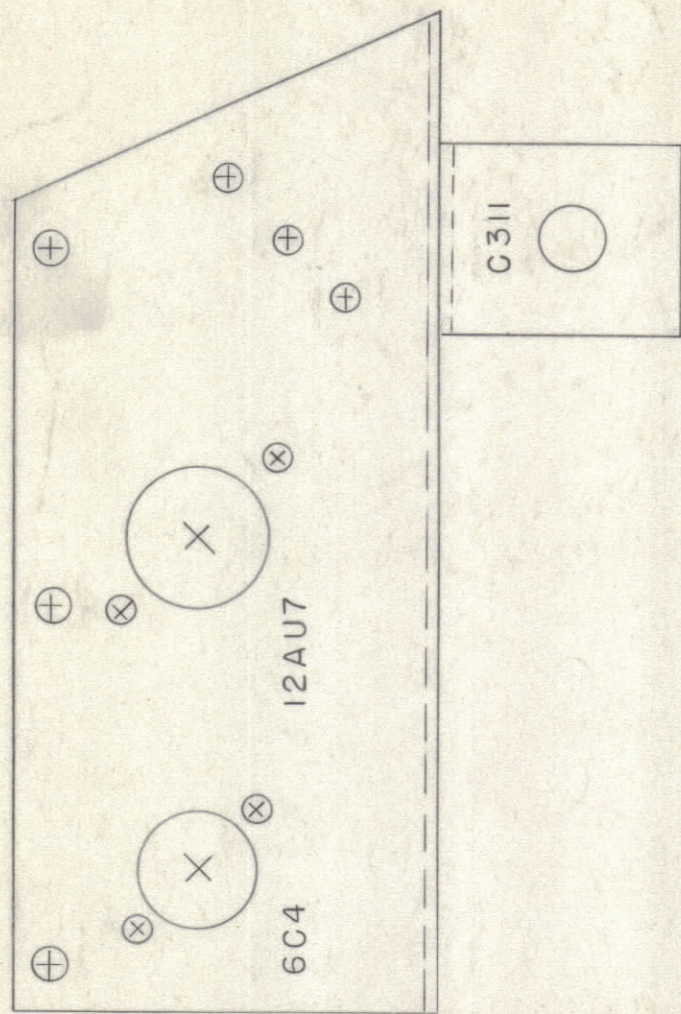
IF IT IS FOUND DESIRABLE TO CHANGE ANY TOLERANCE OR OTHER DETAIL SPECIFIED ON THIS DRAWING NOTIFY THE PURCHASER PROMPTLY.

MAXIMUM ALLOWABLE TOLERANCES HAVE BEEN DETERMINED AND DEVIATIONS WILL BE CAUSE FOR REJECTION. REMOVE ALL BURRS AND SHARP EDGES

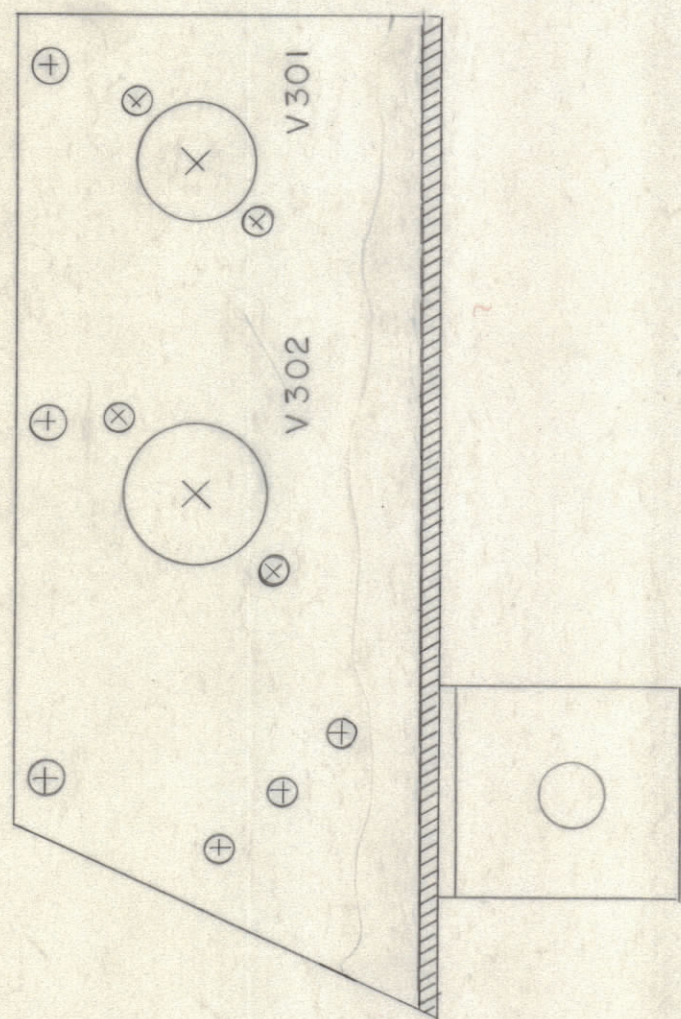
**NOTICE TO PERSONS RECEIVING THIS DRAWING**

THE TECHNICAL MATERIEL CORPORATION claims proprietary right in the material disclosed herein. This drawing is issued in confidence for engineering information only and may not be reproduced or used to manufacture anything shown hereon without permission from THE TECHNICAL MATERIEL CORPORATION to the user. This drawing is loaned for mutual assistance and is subject to recall at any time.

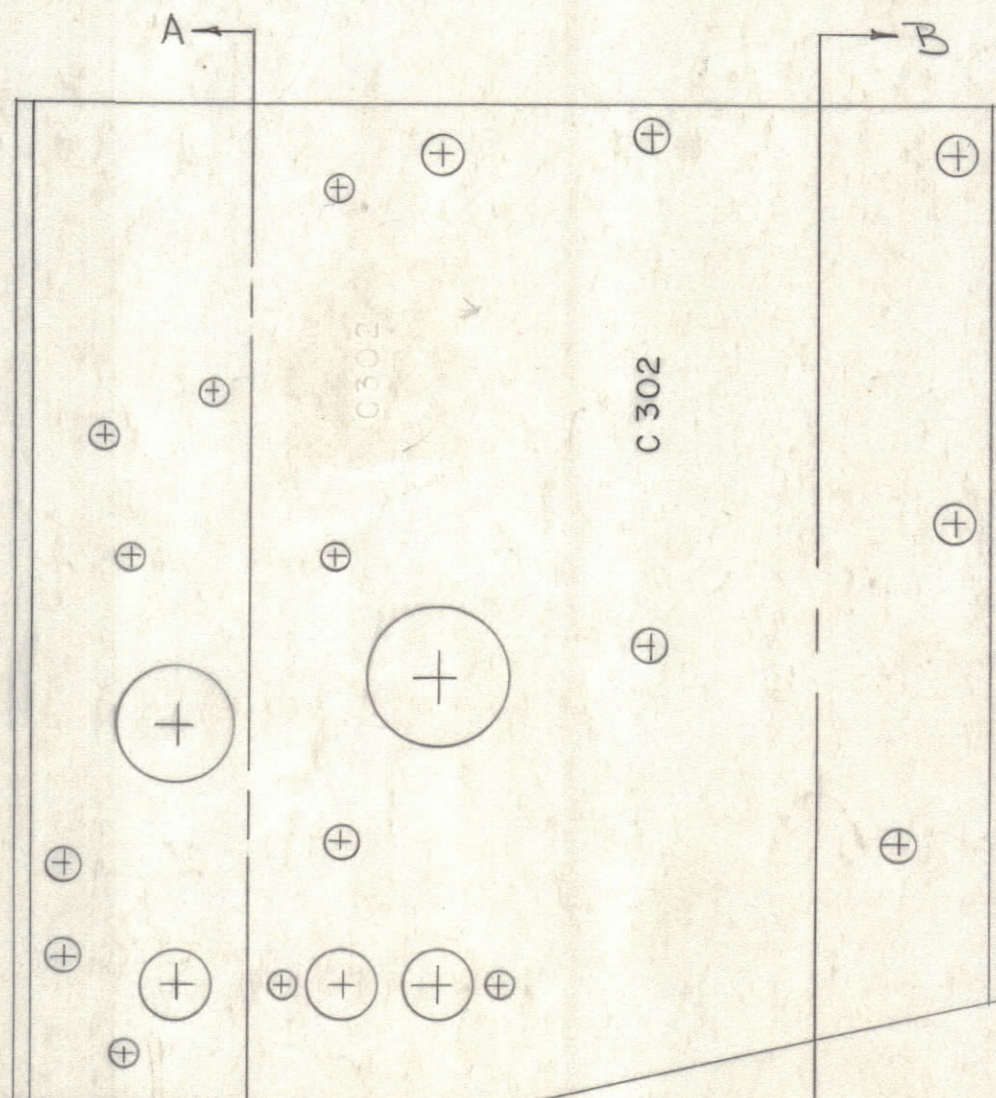
Property of:  
THE TECHNICAL MATERIEL CORPORATION  
MAMARONECK, NEW YORK



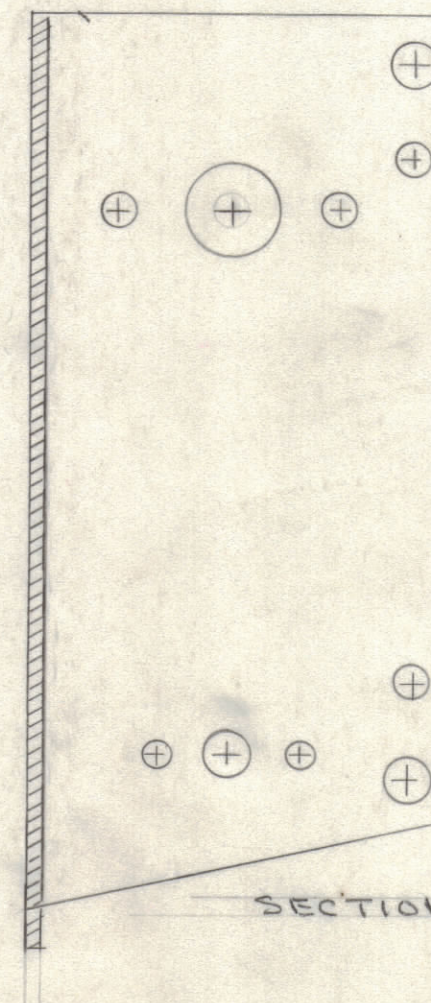
OUTSIDE OF CHASSIS



SECTION "A-A"



INSIDE OF CHASSIS



SECTION "B-B"

REF. DWG. MS-332

LD-274

LETTERING TO BE 1/8 HIGH BLACK GOTHIC. STAMPING TO BE DONE AFTER ASSEMBLY OF COMPONENTS.

ISSUE	ITEM	CHANGED FROM	DATE	CN. NO.	DRAFTS	CHECKER	ENG. APP.
TOLERANCES		SCALE:					
ALL OTHERS	DEC. DIM. ± FRAC. DIM. ± ANGULAR DIM. ±	DRILL PUNCH, COMMERCIAL STOCK SIZES AND MANUFACTURERS TOLERANCES ARE NOT INCLUDED.					

REQ PER UNIT	MODEL	PROJECT NO.	ASS'Y. NO.	DATE
1	RTF-2	MAS/OSC		
1	PMO-182			5-2-56
1	VOX-182			5-2-56
1	RTF	E-271		5-2-56

REQ. ITEM	PART NO.	DESCRIPTION	SYMBOL
<b>THE TECHNICAL MATERIEL CORP.</b> MAMARONECK, NEW YORK			
LETTERING, OVEN CHASSIS			
MATERIAL	WEIGHT PER PC.	M/O	GPT-750
TYPE & TEMPER		ODD. 5/2/56	me
HEAT TREAT. SPEC.		me	A.J.J.
FINISH & SPEC. NO.			LD-274