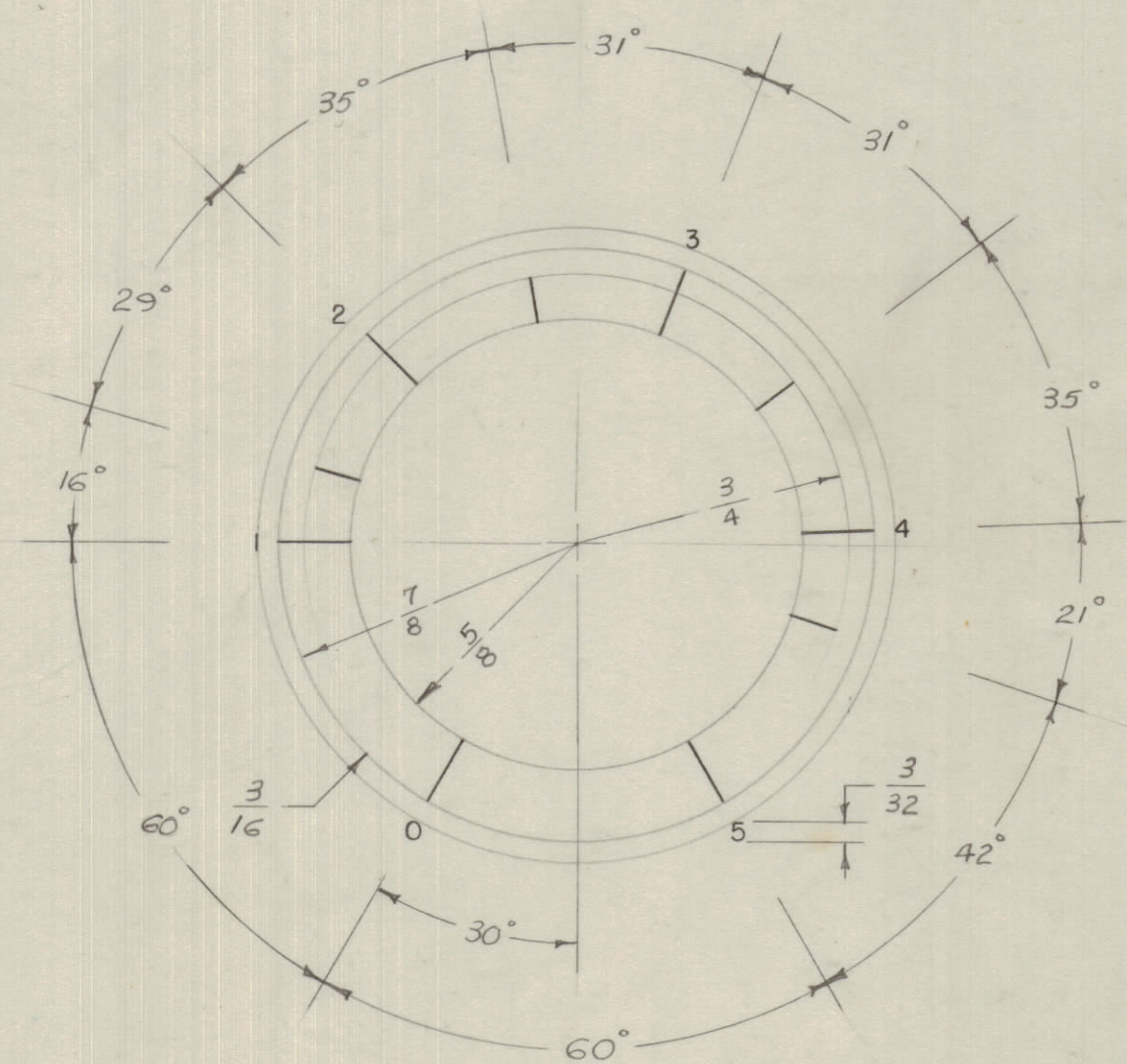
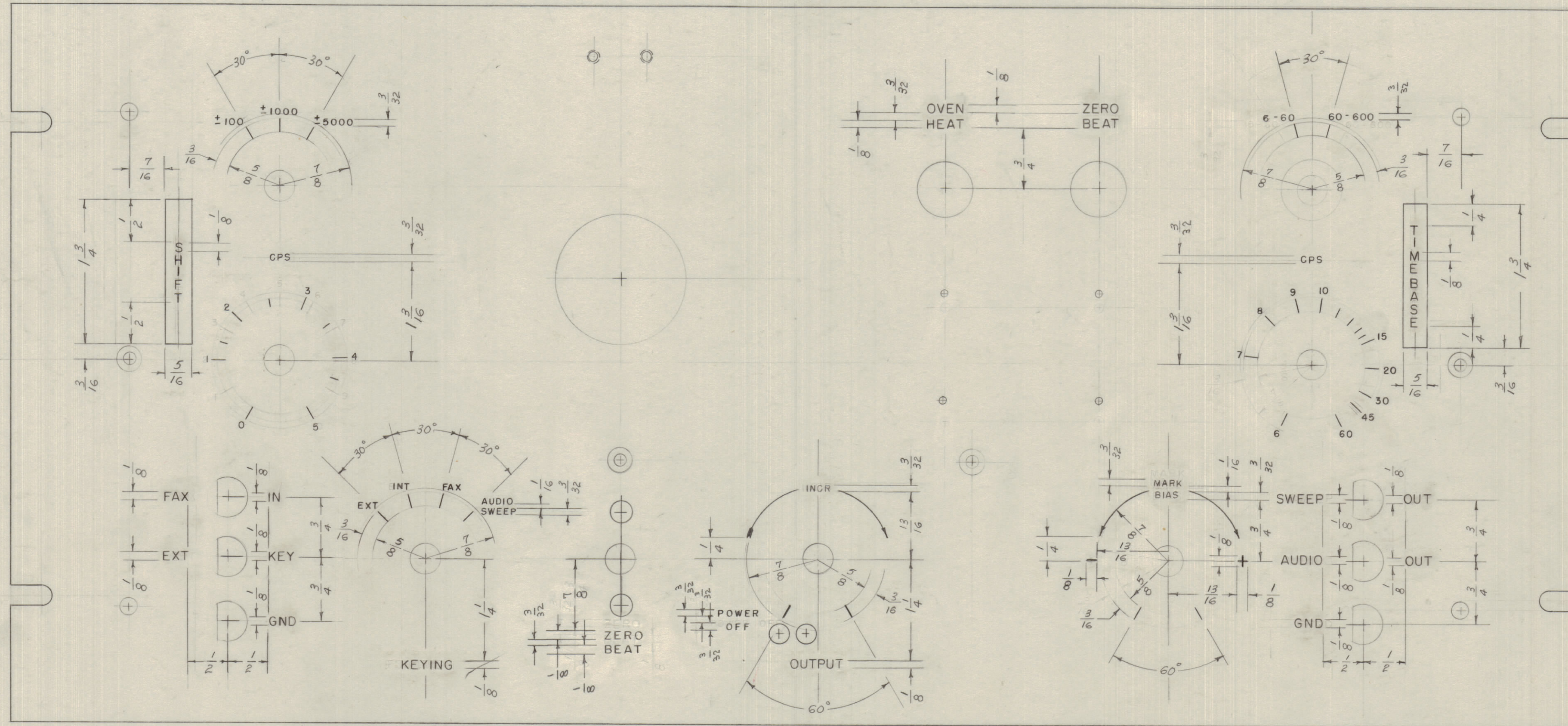


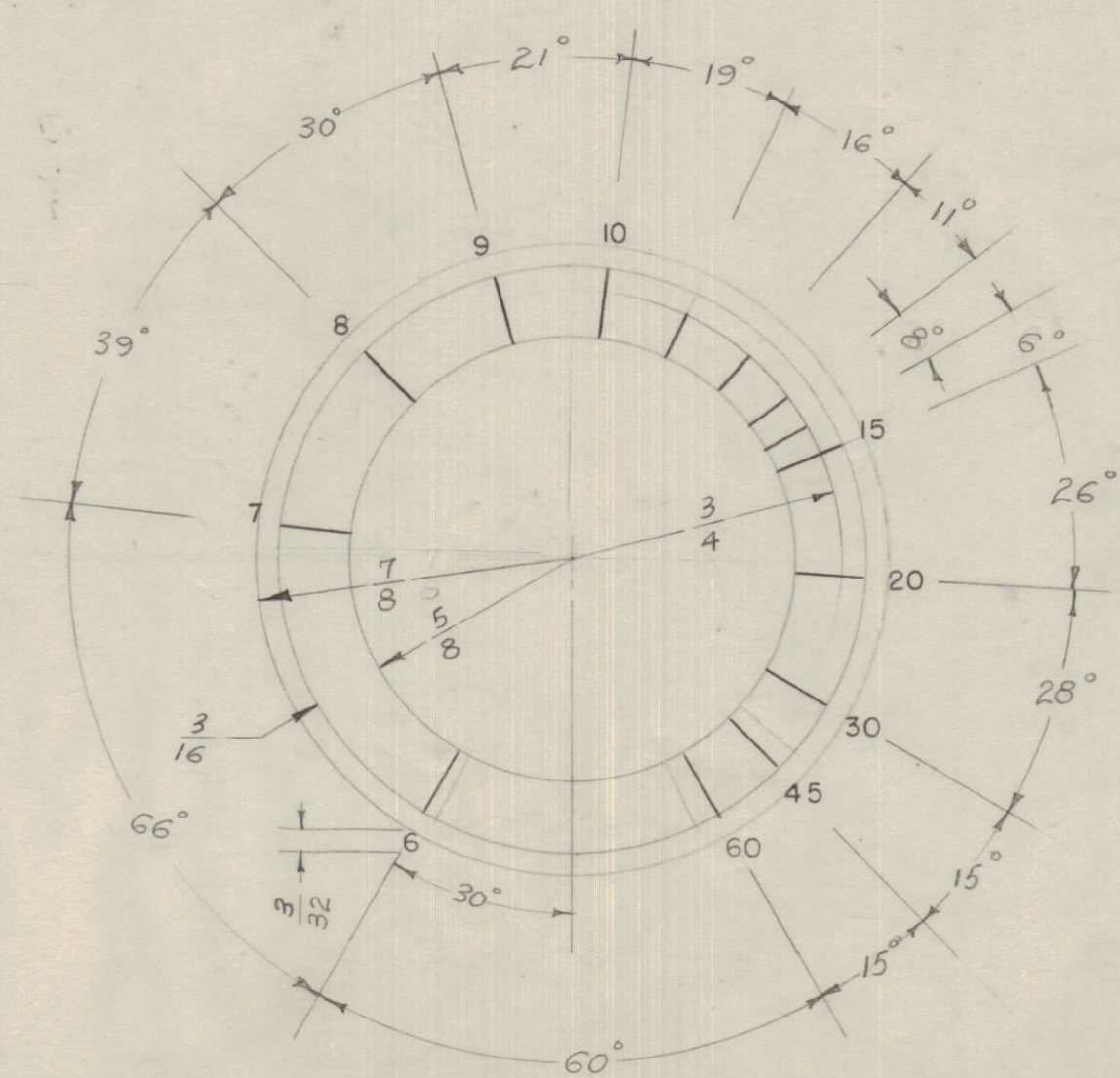
IF IT IS FOUND DESIRABLE TO CHANGE ANY TOLERANCE OR OTHER DETAIL SPECIFIED ON THIS DRAWING NOTIFY THE PURCHASER PROMPTLY.  
 MAXIMUM ALLOWABLE TOLERANCES HAVE BEEN DETERMINED AND DEVIATIONS WILL BE CAUSE FOR REJECTION. REMOVE ALL BURRS AND SHARP EDGES

NOTICE TO PERSONS RECEIVING THIS DRAWING  
 THE TECHNICAL MATERIEL CORPORATION claims proprietary right in the material disclosed hereon. This drawing is issued in confidence for engineering information only and may not be reproduced or used to manufacture anything shown hereon without permission from THE TECHNICAL MATERIEL CORPORATION to the user. This drawing is loaned for mutual assistance and is subject to recall at any time.  
 Property of:  
 THE TECHNICAL MATERIEL CORPORATION  
 MAMARONECK, NEW YORK



NOTE:  
 ENGRAVING TO BE GOTHIC, WHITE FILLED  
 SIZES AS SHOWN BELOW

LETTER	DEPTH OF HEIGHT	WIDTH OF STROKE
3/32	.010	.015
1/8	.010	.020
MARKER LINES ETC	.010	.020



ISSUE	ITEM	CHANGED FROM	DATE	GN. NO.	DRAFTS	CHECKER	ENG. APP.
TOLERANCES							
ALL OTHERS		DEC. DIM. ±	SCALE:		DRILL, PUNCH, COMMERCIAL STOCK		
		FRAC. DIM. ±			SIZES AND MANUFACTURERS		
		ANGULAR DIM. ±			TOLERANCES ARE NOT INCLUDED.		

1	FSS	PROJECT NO.	ASSY. NO.	DATE
REQ PER UNIT	MODEL			6-24-55
USED ON				

REF. DWG. MS-659			
REQ. ITEM	PART NO.	DESCRIPTION	SYMBOL
THE TECHNICAL MATERIEL CORP. MAMARONECK, NEW YORK			
FRONT PANEL ENGRAVING			
MODEL FSS			
TYPE & TEMPER	18-62455	K2	WDE
DRAWN	JAC	ELEC. DES. APP.	A.J.J.
HEAT TREAT. SPEC.		CHECKED	FINAL APPROVAL
			LD-225

LD-225