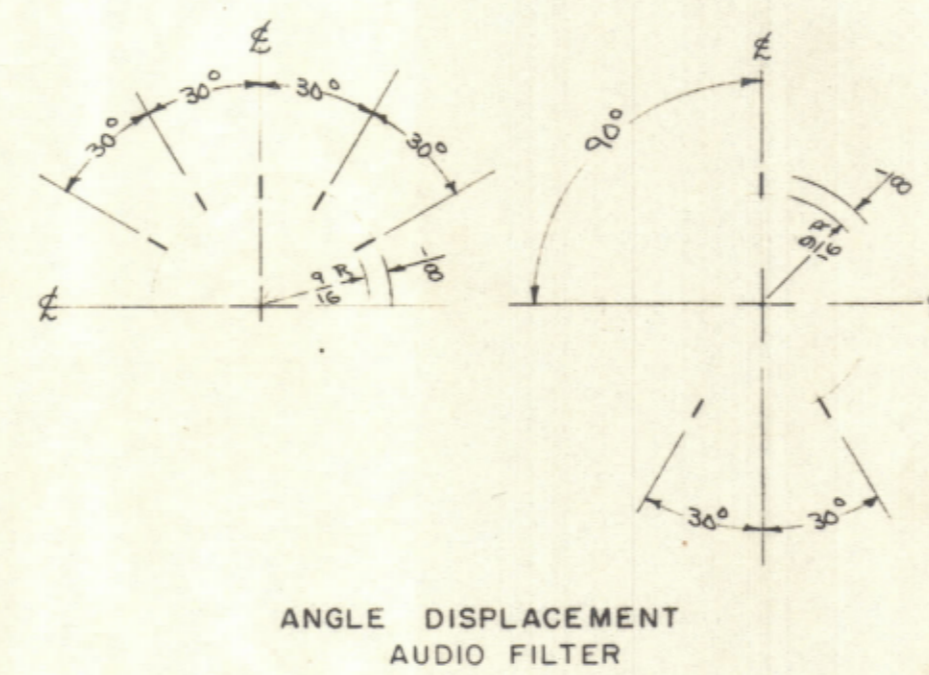
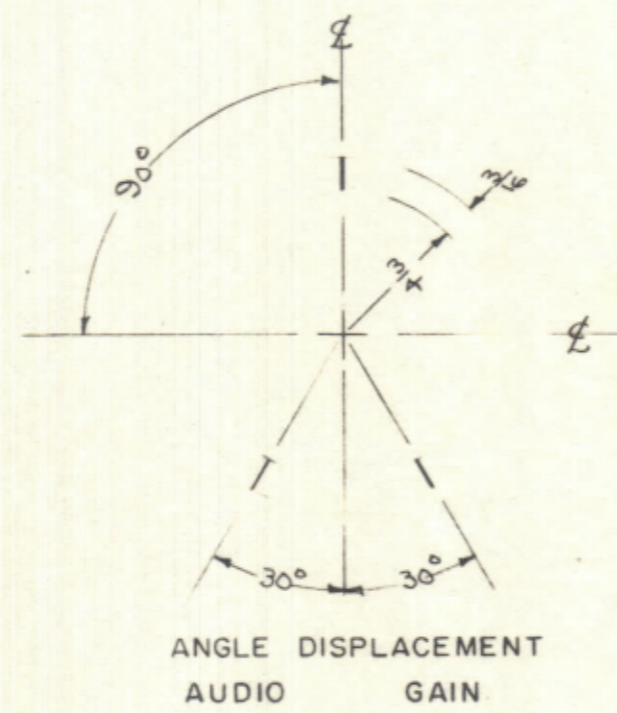
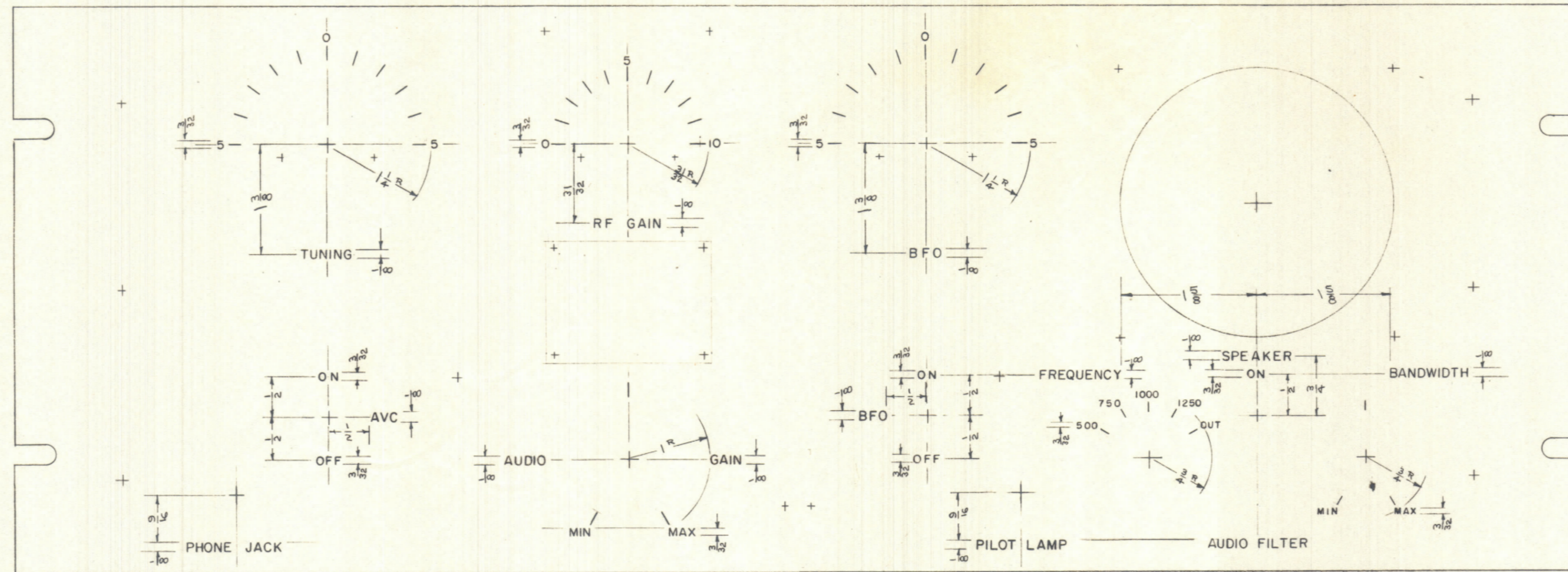
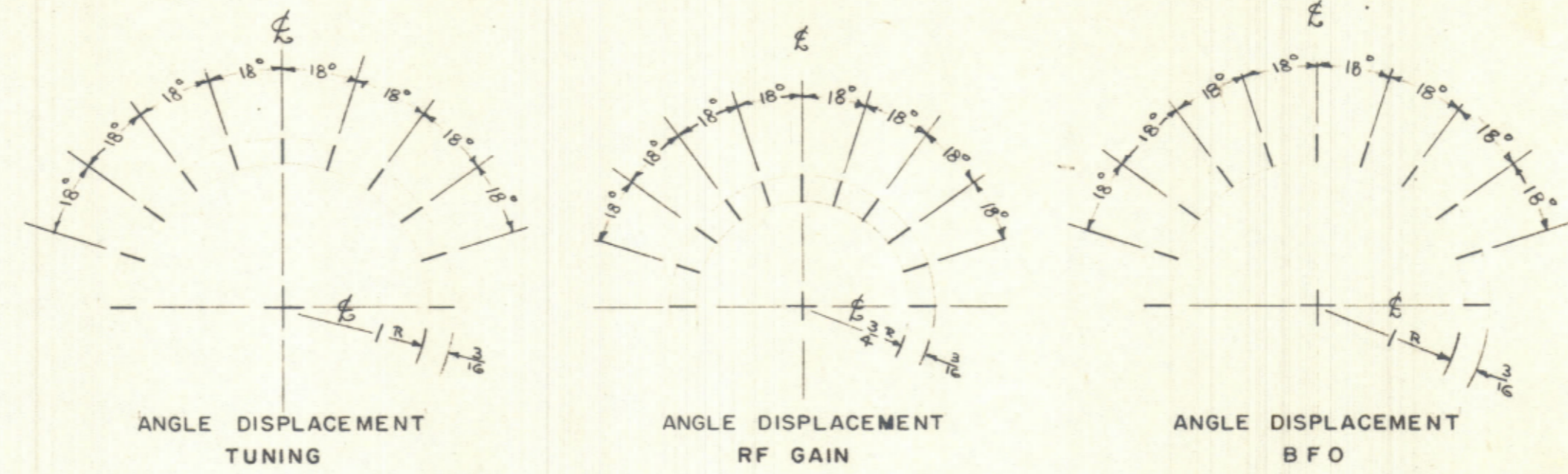


IF IT IS FOUND DESIRABLE TO CHANGE ANY TOLERANCE OR OTHER DETAIL SPECIFIED ON THIS DRAWING NOTIFY THE PURCHASER PROMPTLY.  
 MAXIMUM ALLOWABLE TOLERANCES HAVE BEEN DETERMINED AND DEVIATIONS WILL BE CAUSE FOR REJECTION. REMOVE ALL BURRS AND SHARP EDGES



ENGRAVING TO BE GOTHIC, WHITE FILLED SIZES AS SHOWN BELOW

LETTER HEIGHT	DEPTH OF STROKE	WIDTH OF STROKE
3/32	.010	.015
1/8	.010	.020

B	1	ENG. CHART ADDED	4/1/54	2	CSO	JAW	INS
A	1	REV. OF TUNING, RF GAIN, BFO WERE 3/16	1/18/54	1	JAW	CSO	A.J.J.
ISSUE	ITEM	CHANGED FROM	DATE	CH. NO.	DRAFTS	CHECKER	ENG. APP.

ALL OTHERS	DEC. DIM. ± FRAC. DIM. ± ANGULAR DIM. ±	DRILL, PUNCH, COMMERCIAL STOCK SIZES AND MANUFACTURERS TOLERANCES ARE NOT INCLUDED.
------------	---	---

REF: MS-575

REQ. ITEM	PART NO.	DESCRIPTION	SYMBOL
		THE TECHNICAL MATERIEL CORP. MAMARONECK, NEW YORK	
		STOCK SIZE	
		ENGRAVING, FRONT PANEL	
		MODEL RSC-2	
		MATERIAL	
		WEIGHT PER PC.	
		TYPE & TEMPER	
		DRAWN	JAW
		ELEC. DES. APP.	K2
		MECH. DES. APP.	M.H.S.
		CHECKED	JAW
		FINAL APPROVAL	A.J.J.
		FINISH & SPEC. NO.	

RSC-2	170	11-12-54
MODEL	PROJECT NO.	DATE
USED ON		

LD-203

B

ORIGINAL