

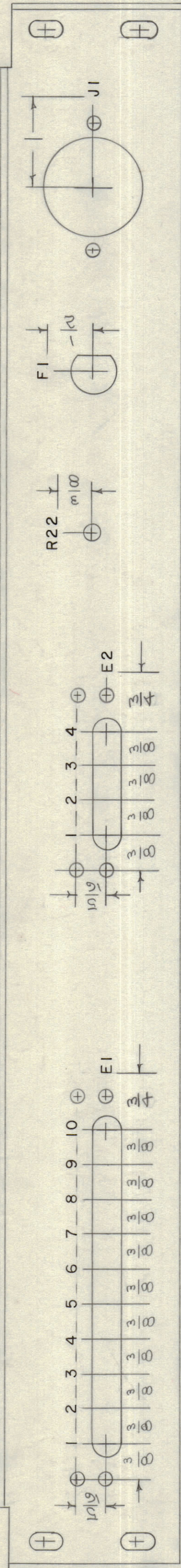
IF IT IS FOUND DESIRABLE TO CHANGE ANY TOLERANCE OR OTHER DETAIL SPECIFIED ON THIS DRAWING NOTIFY THE PURCHASER PROMPTLY.
 MAXIMUM ALLOWABLE TOLERANCES HAVE BEEN DETERMINED AND DEVIATIONS WILL BE CAUSE FOR REJECTION. REMOVE ALL BURRS AND SHARP EDGES

NOTICE TO PERSONS RECEIVING THIS DRAWING

THE TECHNICAL MATERIEL CORPORATION claims proprietary right in the material disclosed herein. This drawing is issued in confidence for engineering information only and may not be reproduced or used to manufacture anything shown hereon without permission from THE TECHNICAL MATERIEL CORPORATION to the user. This drawing is loaned for mutual assistance and is subject to recall at any time.

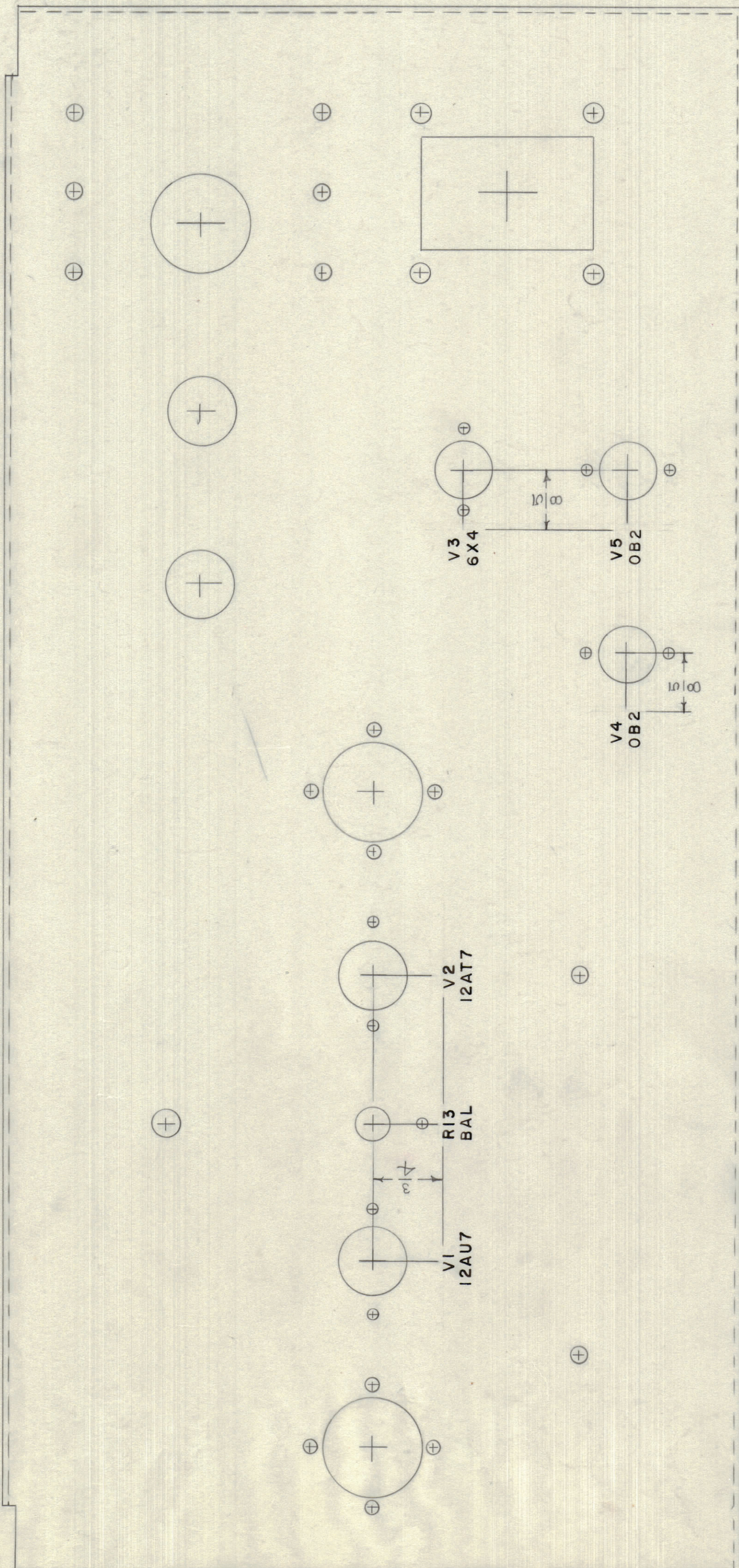
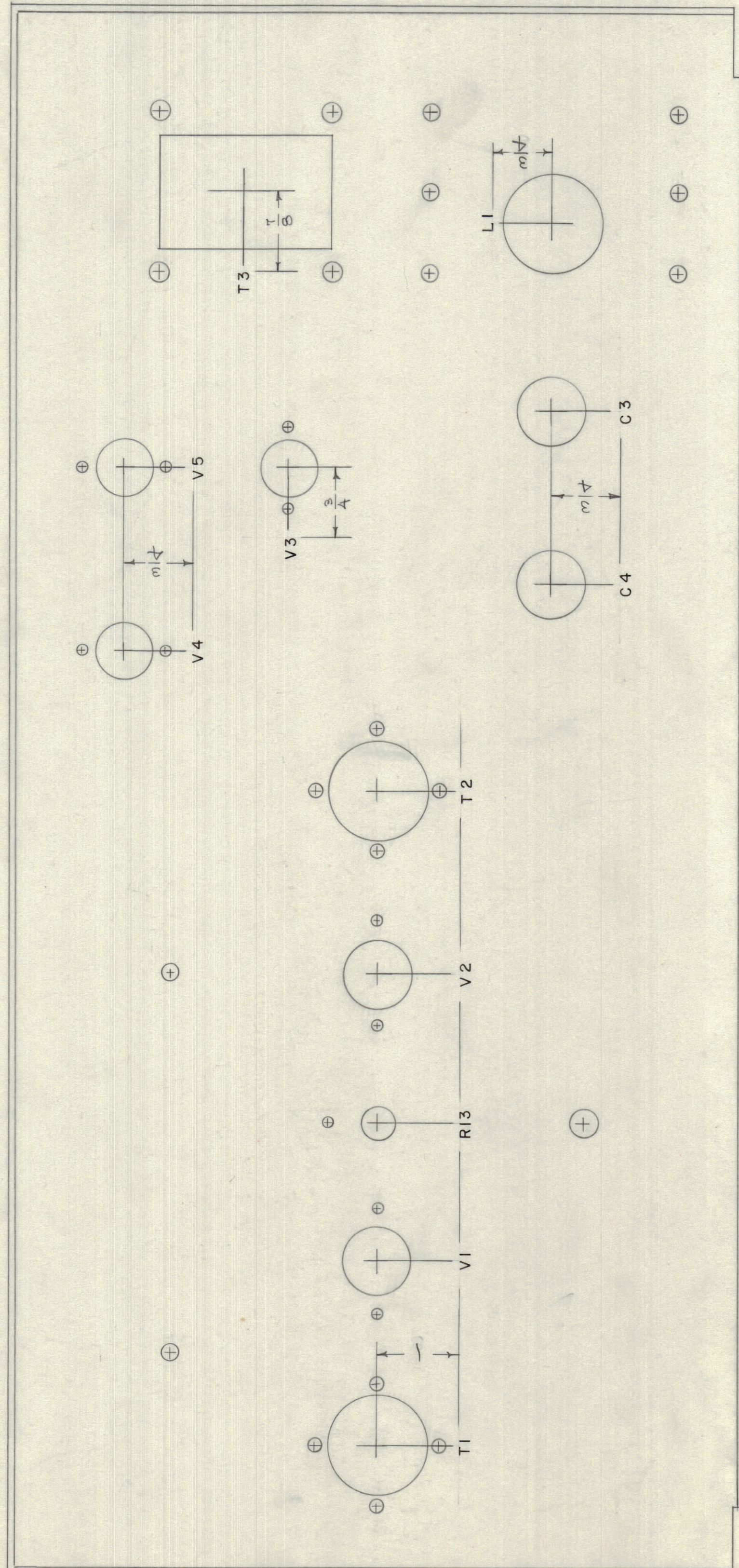
Property of:

THE TECHNICAL MATERIEL CORPORATION
 MAMARONECK, NEW YORK

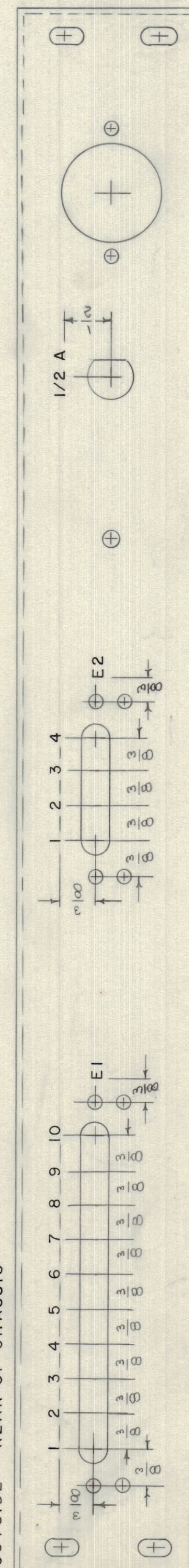


INSIDE — REAR OF CHASSIS

INSIDE — BOTTOM OF CHASSIS

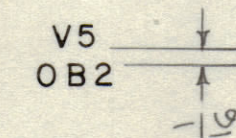


OUTSIDE — TOP OF CHASSIS



OUTSIDE — REAR OF CHASSIS

LETTERING TO BE 1/8" HIGH GOTHIC.
 SPACING BETWEEN LINES TO BE AS BELOW.



REF. DWG. A-577

A	2	DIM. ADDED	11456	1	CDD	P.C.X.	A.J.J.
ISSUE	ITEM	CHANGED FROM	DATE	GN. NO.	DRAFTS	CHECKER	ENG. APP.
TOLERANCES		SCALE:					
ALL OTHERS	DEC. DIM. \pm	DRILL PUNCH, COMMERCIAL STOCK					
	FRAC. DIM. \pm $1/32$	SIZES AND MANUFACTURERS					
	ANGULAR DIM. \pm	TOLERANCES ARE NOT INCLUDED.					

REQ. PER UNIT	RSM-2	170	PROJECT NO.	11-14-56	DATE
	MODEL	ASSY. NO.	USED ON		

REQ. ITEM	PART NO.	DESCRIPTION	SYMBOL
THE TECHNICAL MATERIEL CORP. MAMARONECK, NEW YORK			
CHASSIS LETTERING			
MATERIAL		RSM-2	
TYPE & TEMPER		CDD	
DRAWN		ELEC. DES. APP. P.C.X.	
HEAT TREAT. SPEC.		MECH. DES. APP. A.J.J.	
CHECKED		FINAL APPROVAL	
FINISH & SPEC. NO.		LD-202 A	

LD-202 A