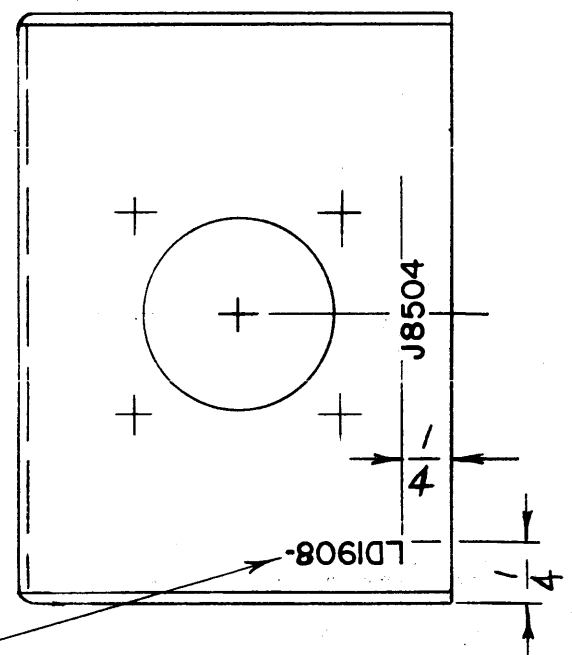
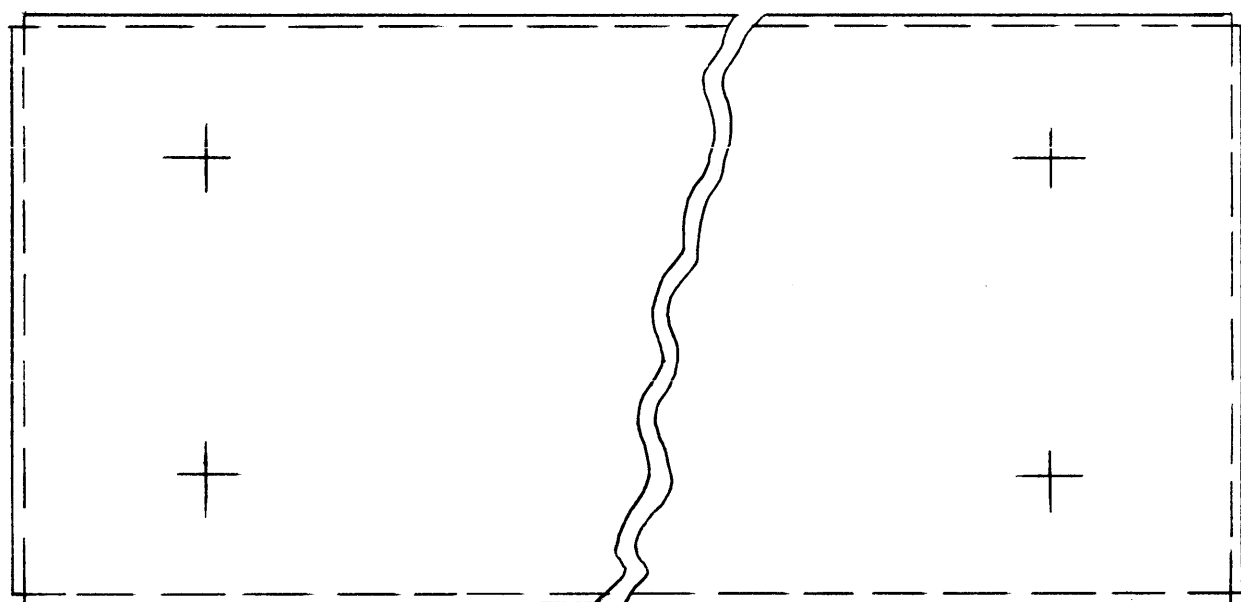
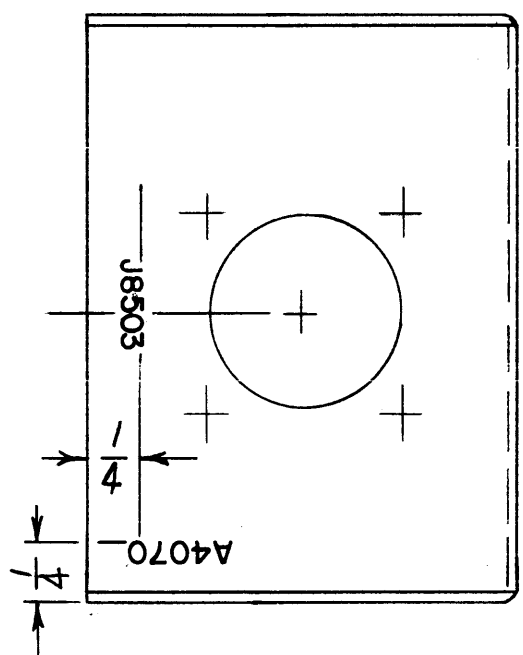






LD1908

REVISIONS					
SYM	DESCRIPTION	DATE	E.M.N. NO.	DRAFT	CHKD APPD
X	EXPERIMENTAL RELEASE	5-25-65		HKA	
Ø	ORIGINAL RELEASE FOR PRODUCTION	1/4/67		JPO	



MARK TMC PART NO. W/LATEST REV. LETTER

MARKING PROCESS: AS PER TMC SPECIFICATION S-727.  
 LETTERING: 1/8 HIGH BLACK GOTHIC, LOCATED AS SHOWN.

REF.: M54561

1	RAK-55	
Q'TY./UNIT	MODEL USED ON	ASS'Y. NO.
SCALE	CODE	

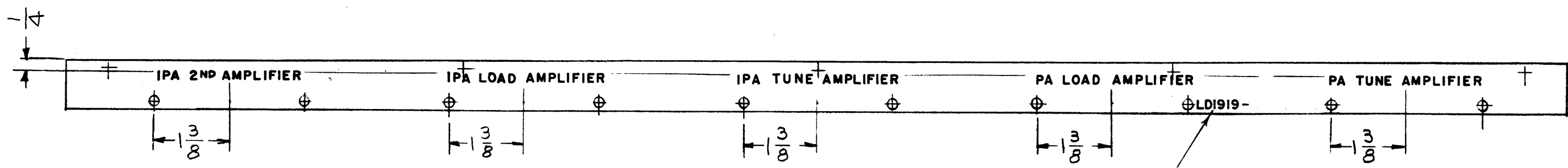
REQ'D.	ITEM	PART NUMBER	DESCRIPTION	SYMBOL
<b>STURMER LIST OF MATERIAL</b>				
MATERIAL		THE TECHNICAL MATERIEL CORP. MAMARONECK, NEW YORK		
FINISH		TITLE MARKING, CHASSIS, ELECTRICAL		
UNLESS OTHERWISE SPECIFIED DIMENSIONS ARE IN INCHES AND INCLUDE CHEMICALLY APPLIED OR PLATED FINISHES		DRAWN H. AUSTIN	DATE 5-25-65	FINAL APPROVAL [Signature]
DECIMALS .X ± .05 .XX ± .01 .XXX ± .005		CHECKED [Signature]	DATE	DATE 1/4/67
FRACTIONS ± 1/64 ANGLES ± 0° 30'		ELECT. DES. [Signature]	DATE 1-4-67	DATE 1/4/67
TOLERANCES		MECH. DES. [Signature]	DATE 1-4-67	DATE 1/4/67
THE CONTENTS OF THIS DRAWING ARE THE EXCLUSIVE PROPERTY OF THE TECHNICAL MATERIEL CORP. ITS UNAUTHORIZED USE OR REPRODUCTION IN WHOLE OR IN PART IS STRICTLY FORBIDDEN.				REV. LTR. Ø

NOTES



LD1919

REVISIONS					
SYM	DESCRIPTION	DATE	E.M.N. NO.	DRAFT	CHKD APPD
X1	1/4 WAS 3/16	9-6-65	X1	MS	LA
X2	MS4542-1- DELETED FROM TMC PART NO.	2-10-66	-M-	JC	
Ø	ORIGINAL RELEASE FOR PRODUCTION	3/5/66			fls



MARKING PROCESS: AS PER TMC SPECIFICATION S-727.  
 LETTERING: 1/8 HIGH BLACK GOTHIC, LOCATED AS SHOWN.

REF: MS 4542-1

1	TST ( ) 10K	
Q'TY./UNIT	MODEL USED ON	ASS'Y. NO.
SCALE	CODE	
1:2	A	

REQ'D.	ITEM	PART NUMBER	DESCRIPTION	SYMBOL
F. BUDETTI LIST OF MATERIAL				
MATERIAL		THE TECHNICAL MATERIEL CORP. MAMARONECK, NEW YORK		
FINISH		TITLE MARKING BAR, SPT CHASSIS		
UNLESS OTHERWISE SPECIFIED DIMENSIONS ARE IN INCHES AND INCLUDE CHEMICALLY APPLIED OR PLATED FINISHES				
DRAWN G.D.L.		DATE 6-3-65	FINAL APPROVAL	
CHECKED		DATE 2-10-66	DATE	
ELECT. DES.		DATE	LD1919	
MECH. DES. aa		DATE 2-10-66	REV. LTR.	
M/L		SHEET		

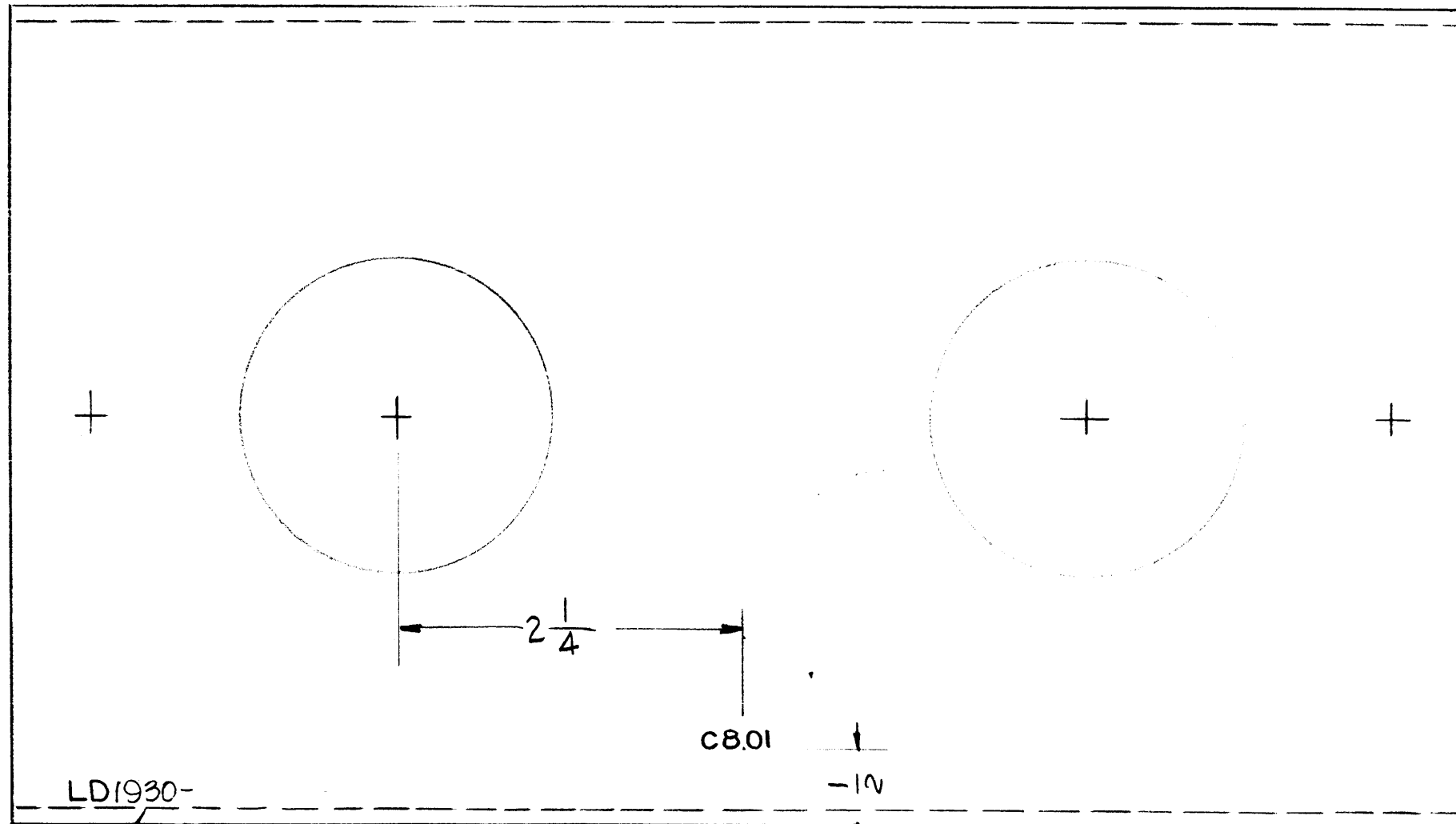
NOTES  
 THE CONTENTS OF THIS DRAWING ARE THE EXCLUSIVE PROPERTY OF THE TECHNICAL MATERIEL CORP. ITS UNAUTHORIZED USE OR REPRODUCTION IN WHOLE OR IN PART IS STRICTLY FORBIDDEN.



MARKING PROCESS: AS PER TMC SPECIFICATION S-727.  
 LETTERING: 1/8 HIGH BLACK GOTHIC, LOCATED AS SHOWN.

LD1930

REVISIONS						
SYM	DESCRIPTION	DATE	E.M.N. NO.	DRAFT	CHKD	APPD
Ø	ORIGINAL RELEASE FOR PRODUCTION	5/17/66		C.V.		<i>file</i>



MARK TMC P/NO W/LATEST REV. LETTER

REF: MS4611

REQ'D.	ITEM	PART NUMBER	DESCRIPTION	SYMBOL
<b>F. BUDETTI LIST OF MATERIAL</b>				
MATERIAL		<b>THE TECHNICAL MATERIEL CORP. MAMARONECK, NEW YORK</b>		
FINISH		TITLE <b>MARKING, PLATE, MTC. XFMR</b>		
UNLESS OTHERWISE SPECIFIED DIMENSIONS ARE IN INCHES AND INCLUDE CHEMICALLY APPLIED OR PLATED FINISHES		DRAWN <i>G.D.L</i>	DATE <b>6-8-65</b>	FINAL APPROVAL <i>[Signature]</i>
		CHECKED <i>[Signature]</i>	DATE	DATE <b>5/17/66</b>
DECIMALS .X ± .05 .XX ± .01 .XXX ± .005		FRACTIONS ± 1/64 ANGLES ± 0° 30'		TOLERANCES
THE CONTENTS OF THIS DRAWING ARE THE EXCLUSIVE PROPERTY OF THE TECHNICAL MATERIEL CORP. ITS UNAUTHORIZED USE OR REPRODUCTION IN WHOLE OR IN PART IS STRICTLY FORBIDDEN.		ELECT. DES. <i>[Signature]</i>	DATE <b>5-13-66</b>	DATE <b>5/17/66</b>
NOTES		MECH. DES.	DATE	DATE
				<b>LD1930</b>
				Ø
				REV. LTR.

Q'TY./UNIT	MODEL USED ON	ASS'Y. NO.
1	TST ( ) 10K	
SCALE <b>1:1</b>	CODE <b>A</b>	



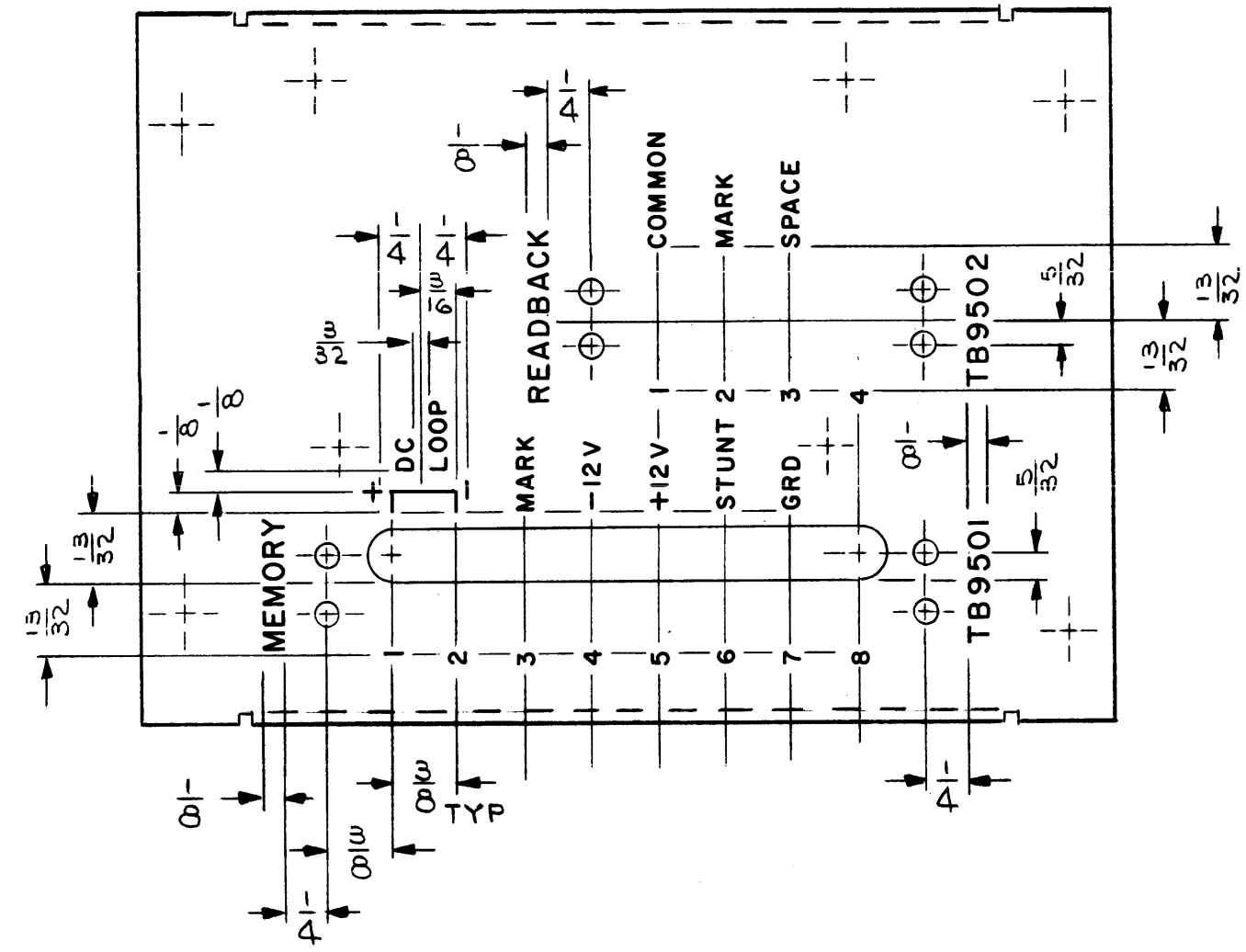




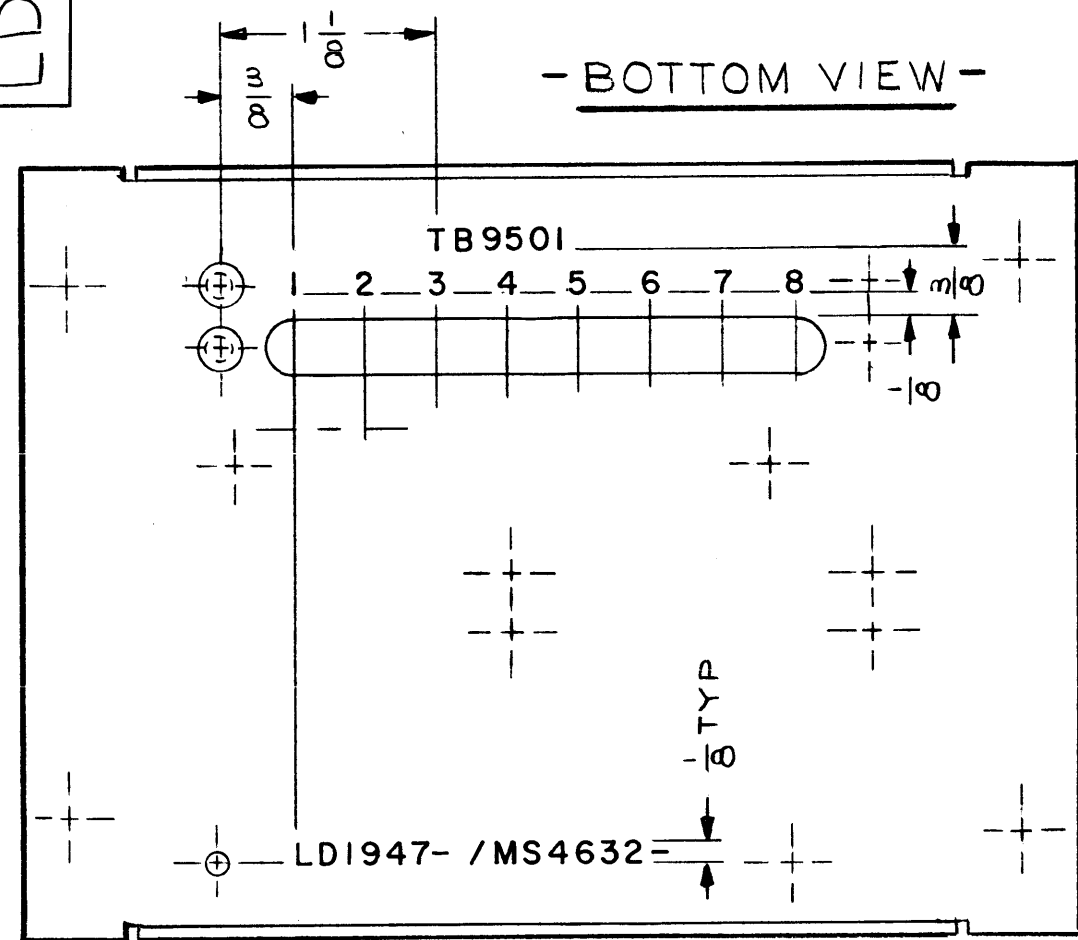
LD1947

REVISIONS						
SYM	DESCRIPTION	DATE	E.M.N. NO.	DRAFT	CHKD	APPD
X	EXPERIMENTAL RELEASE	6-18-65	M	JC		
Ø	ORIGINAL RELEASE FOR PRODUCTION	6-18-65	Ø	DVV		

- TOP VIEW -



- BOTTOM VIEW -



- UNLESS OTHERWISE SPECIFIED -

- 1-MARKING PROCESS: AS PER TMC SPECIFICATION S-727.
- 2-LETTERING: 3/32 HIGH BLACK GOTHIC, LOCATED AS SHOWN.

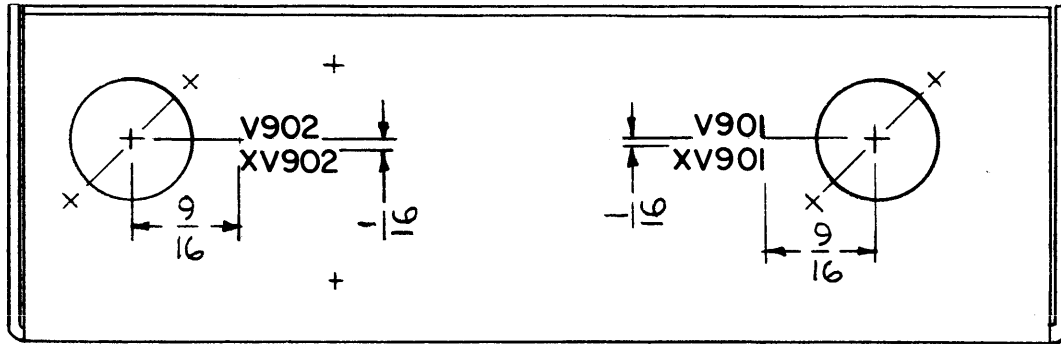
NOTES

1	AK-101	
Q'TY./UNIT	MODEL USED ON	ASS'Y. NO.
SCALE 1/1	CODE	
THE CONTENTS OF THIS DRAWING ARE THE EXCLUSIVE PROPERTY OF THE TECHNICAL MATERIEL CORP. ITS UNAUTHORIZED USE OR REPRODUCTION IN WHOLE OR IN PART IS STRICTLY FORBIDDEN.		

REF: MS 4632

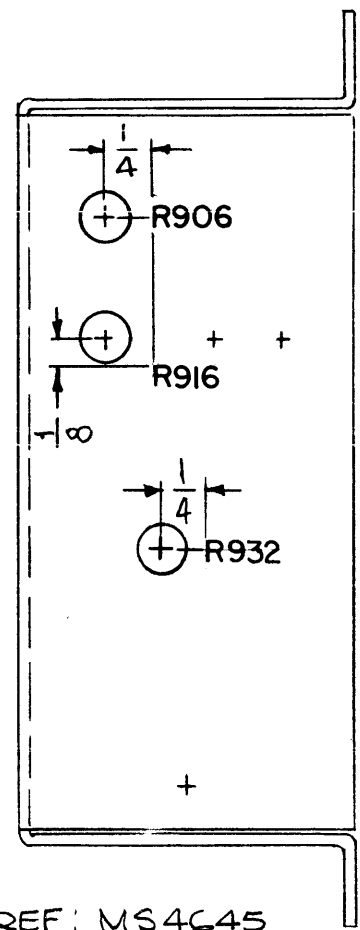
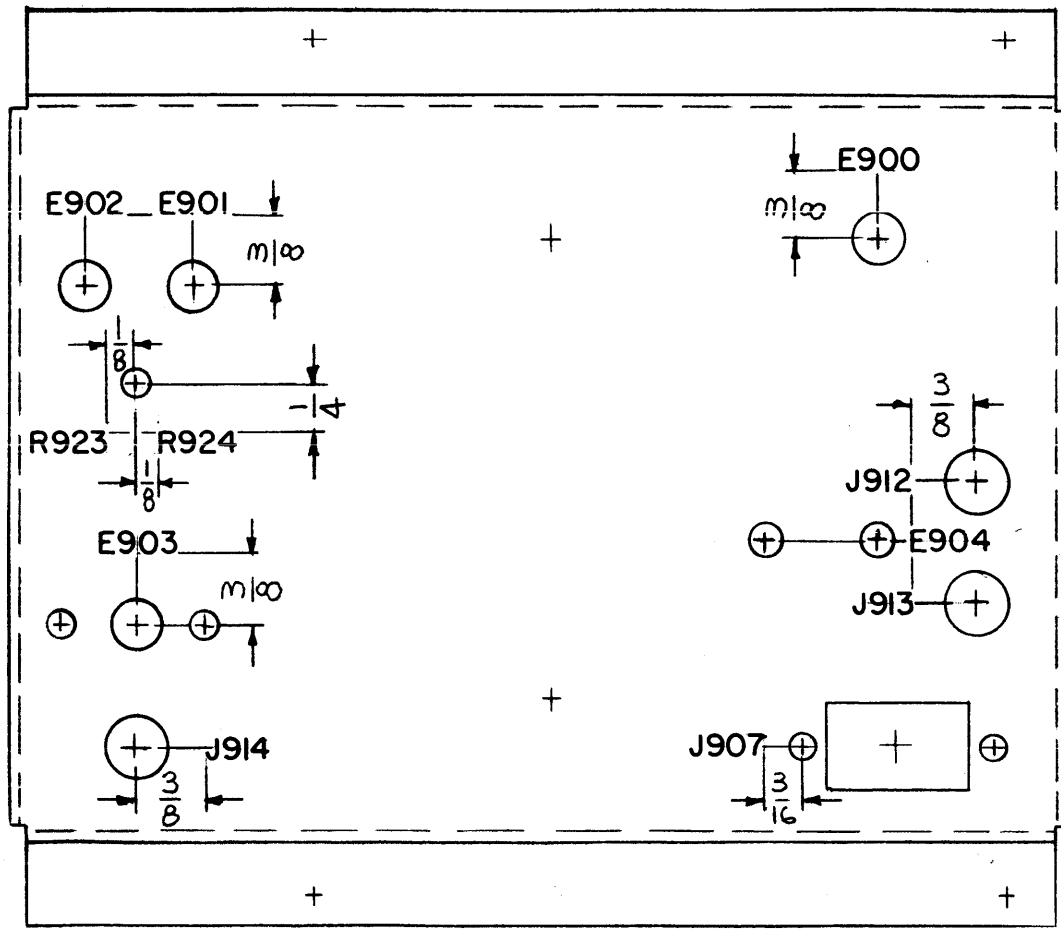
REQ'D.	ITEM	PART NUMBER	DESCRIPTION	SYMBOL
F. E. EATON LIST OF MATERIAL				
MATERIAL		THE TECHNICAL MATERIEL CORP. MAMARONECK, NEW YORK		
FINISH		TITLE MARKING-CHASSIS, ELECT., MAIN		
UNLESS OTHERWISE SPECIFIED DIMENSIONS ARE IN INCHES AND INCLUDE CHEMICALLY APPLIED OR PLATED FINISHES		DRAWN J. LESHINSKI	DATE 6/17/65	FINAL APPROVAL <i>[Signature]</i>
DECIMALS .X ± .05 .XX ± .01 .XXX ± .005		CHECKED <i>[Signature]</i>	DATE 6-18-65	DATE 6/24/65
FRACTIONS ± 1/64 ANGLES ± 0° 30'		ELECT. DES. <i>[Signature]</i>	DATE 6/24/65	DATE
TOLERANCES		MECH. DES. <i>[Signature]</i>	DATE 6/24/65	DATE
SHEET				REV. LTR.





LD1954

REVISIONS					
SYM	DESCRIPTION	DATE	E.M.N. NO.	DRAFT	CHKD APPD
X1	R932, E904 ADDED	9-21-65	X1	<i>MSB</i>	<i>JA</i>
X2	MS4645 DELETED FROM TMC PART NO.	2-10-66		Jc	
Ø	ORIGINAL RELEASE FOR PRODUCTION	3/15/66	Ø		<i>Flow</i>



MARK TMC PART NO.  
LD1954-  
1/8 HIGH GOTHIC W/LATEST  
REV. LETTER.

MARKING PROCESS: AS PER TMC SPECIFICATION S-727.  
LETTERING: 1/8 HIGH BLACK GOTHIC, LOCATED AS SHOWN.

REF: MS4645

REQ'D.	ITEM	PART NUMBER	DESCRIPTION	SYMBOL
<b>F. BUDETTI</b>				
MATERIAL			LIST OF MATERIAL	
FINISH			THE TECHNICAL MATERIEL CORP. MAMARONECK, NEW YORK	
UNLESS OTHERWISE SPECIFIED DIMENSIONS ARE IN INCHES AND INCLUDE CHEMICALLY APPLIED OR PLATED FINISHES			TITLE MARKING, CHASSIS, SENSING MARKING PROCESS: AS PER TMC SPEC. S727	
DRAWN <i>MSB</i>		DATE	FINAL APPROV. <i>JA</i>	
CHECKED <i>MSB</i>		DATE 2-10-66	DATE <i>2/10/66</i>	
ELECT. DES. <i>MSB</i>		DATE	LD1954	
MECH. DES. <i>QA</i>		DATE 2-10-66	SHEET	
M/L			REV. LTR.	

NOTES

1	TST-10K	
Q'TY./UNIT	MODEL USED ON	ASS'Y. NO.
SCALE !!!	CODE A	
THE CONTENTS OF THIS DRAWING ARE THE EXCLUSIVE PROPERTY OF THE TECHNICAL MATERIEL CORP. ITS UNAUTHORIZED USE OR REPRODUCTION IN WHOLE OR IN PART IS STRICTLY FORBIDDEN.		

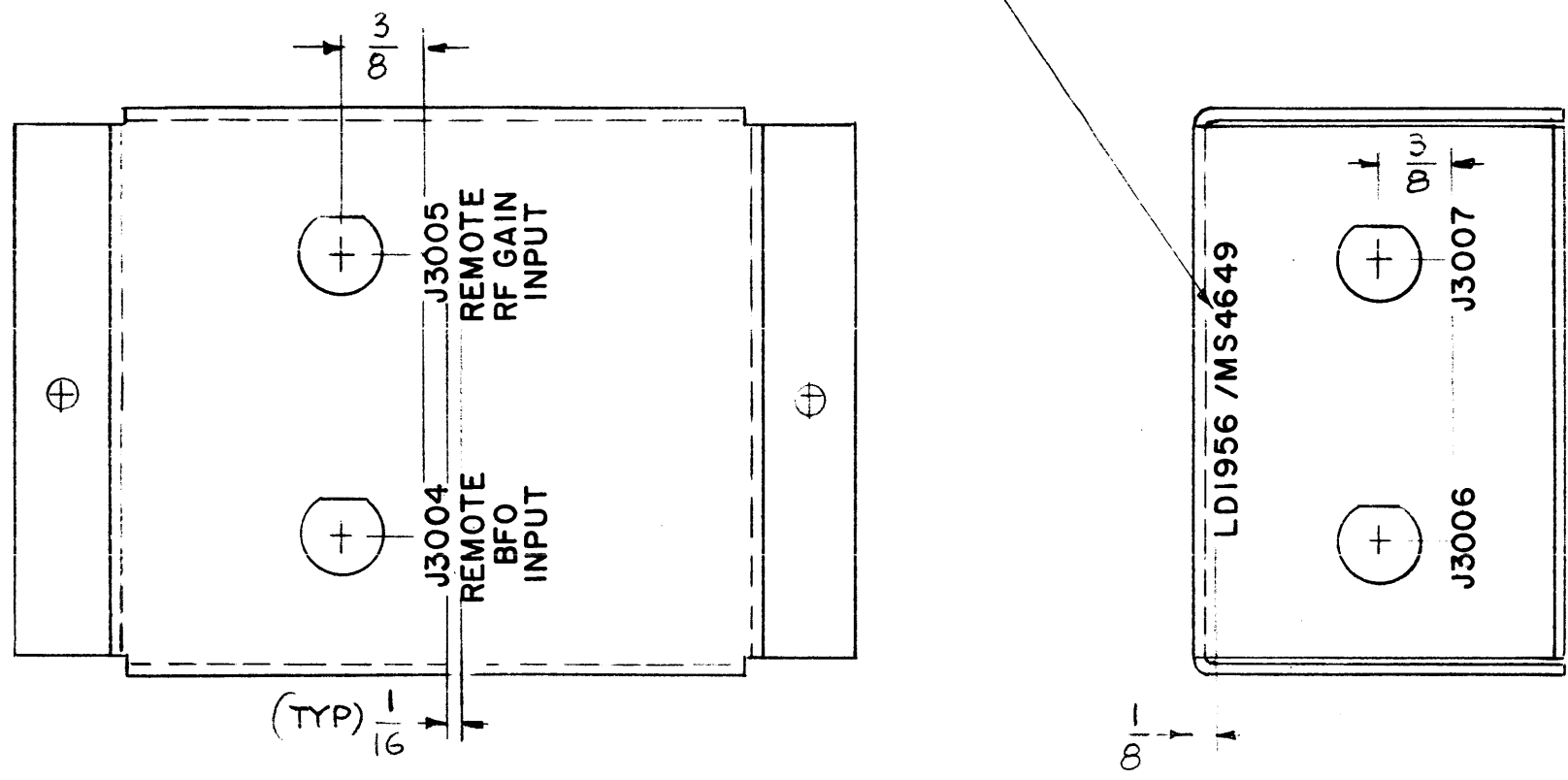
DECIMALS	FRACTIONS
.X ± .05	± 1/64
.XX ± .01	ANGLES ± 0° 30'
.XXX ± .005	



REVISIONS						
SYM	DESCRIPTION	DATE	E.M.N. NO.	DRAFT	CHKD	APPD
Ø	ORIGINAL RELEASE FOR PRODUCTION	8/9/65	Ø	J.V.		

LD1956

MARK TMC P/No WITH LATEST REV. LETTER



REF: MS4649

MARKING PROCESS: AS PER TMC SPECIFICATION S-727.  
 LETTERING: 1/8 HIGH BLACK GOTHIC, LOCATED AS SHOWN.

REQ'D.	ITEM	PART NUMBER	DESCRIPTION	SYMBOL
EATON LIST OF MATERIAL				
MATERIAL			THE TECHNICAL MATERIEL CORP. MAMARONECK, NEW YORK	
FINISH			TITLE MARKING, BOX TERM. MTG.	
UNLESS OTHERWISE SPECIFIED DIMENSIONS ARE IN INCHES AND INCLUDE CHEMICALLY APPLIED OR PLATED FINISHES			DRAWN G.D.L. CHECKED <i>[Signature]</i> ELECT. DES. <i>[Signature]</i> MECH. DES. <i>[Signature]</i>	DATE 6-29-65 DATE DATE DATE
DECIMALS .X ± .05 .XX ± .01 .XXX ± .005			FRACTIONS ± 1/64 ANGLES ± 0° 30'	FINAL APPROVAL <i>[Signature]</i> DATE 8/9/65 SHEET LD1956 REV. LTR. Ø

1	DDR-5BR	
Q'TY./UNIT	MODEL USED ON	ASS'Y. NO.
SCALE 1:1	CODE A	
THE CONTENTS OF THIS DRAWING ARE THE EXCLUSIVE PROPERTY OF THE TECHNICAL MATERIEL CORP. ITS UNAUTHORIZED USE OR REPRODUCTION IN WHOLE OR IN PART IS STRICTLY FORBIDDEN.		

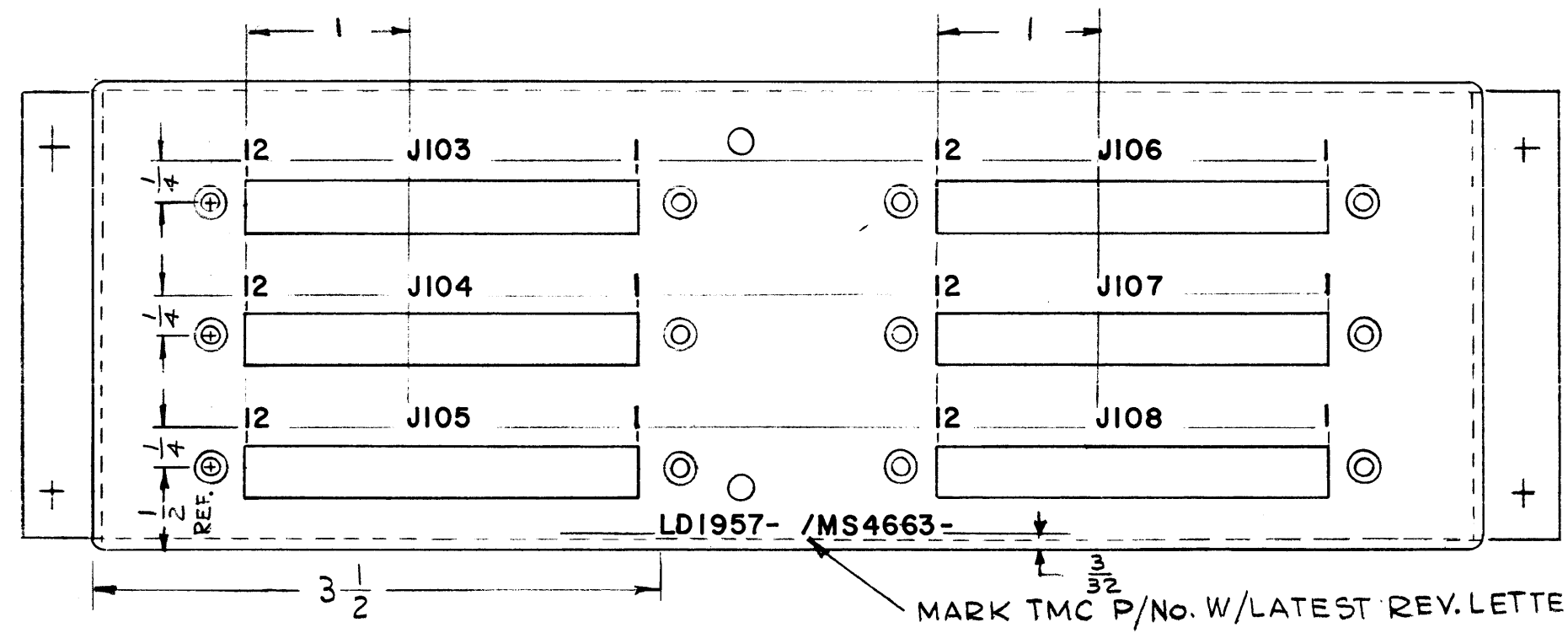
NOTES



MARKING PROCESS: AS PER TMC SPECIFICATION S-727.  
 LETTERING: 1/8 HIGH BLACK GOTHIC, LOCATED AS SHOWN.

LD1957

REVISIONS						
SYM	DESCRIPTION	DATE	E.M.N. NO.	DRAFT	CHKD	APPD
X1	TMC PT/NO. RELOCATED	9-17-65	X1	G.D.L		
Ø	ORIGINAL RELEASE FOR PRODUCTION	10/26/65	Ø			



EXTERIOR VIEW SHOWN

REF. MS 4663

REQ'D.	ITEM	PART NUMBER	DESCRIPTION	SYMBOL
<b>LANGER LIST OF MATERIAL</b>				
MATERIAL			<b>THE TECHNICAL MATERIEL CORP. MAMARONECK, NEW YORK</b>	
FINISH			TITLE <b>MARKING, CHASSIS, WRAPAROUND</b>	
UNLESS OTHERWISE SPECIFIED DIMENSIONS ARE IN INCHES AND INCLUDE CHEMICALLY APPLIED OR PLATED FINISHES			DRAWN <i>PM</i>	DATE 1/26/65
			CHECKED <i>OKS</i>	DATE 9/29/65
			ELECT. DES. <i>RY</i>	DATE 10/26/65
			MECH. DES. <i>RY</i>	DATE 10/26/65
			<b>LD1957</b>	
			SHEET	REV. LTR.

1	RASB-1	A 5188
1	RARB-1	A 5188
Q'TY./UNIT	MODEL USED ON	ASS'Y. NO.
SCALE 1:1	CODE A	
THE CONTENTS OF THIS DRAWING ARE THE EXCLUSIVE PROPERTY OF THE TECHNICAL MATERIEL CORP. ITS UNAUTHORIZED USE OR REPRODUCTION IN WHOLE OR IN PART IS STRICTLY FORBIDDEN.		

NOTES

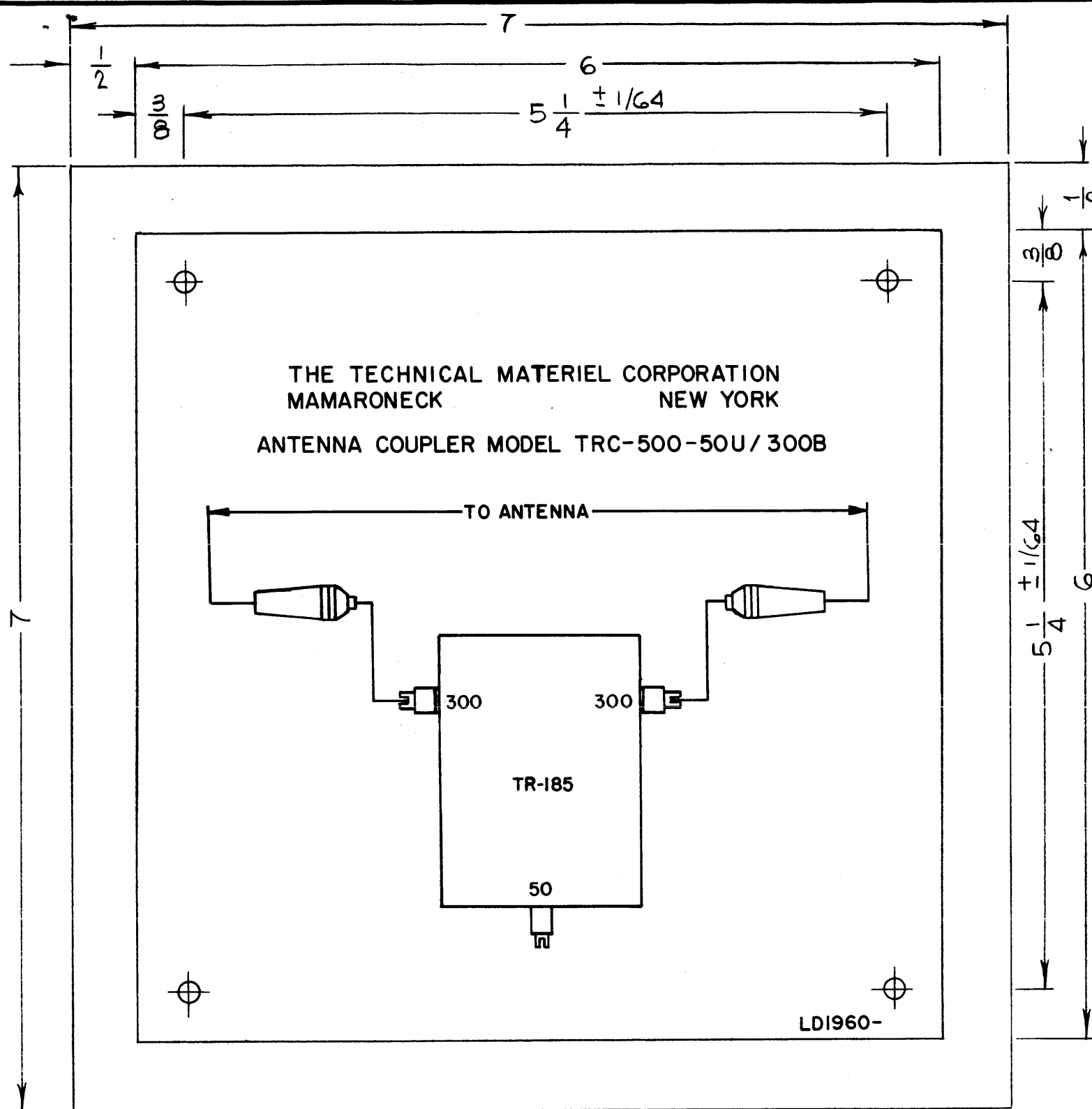
DECIMALS  
.X ± .05  
.XX ± .01  
.XXX ± .005

FRACTIONS  
± 1/64  
ANGLES  
± 0° 30'

TOLERANCES

M/L 10/27AK





LDI960

REVISIONS						
SYM	DESCRIPTION	DATE	E.M.N. NO.	DRAFT	CHKD	APPD
	ORIGINAL RELEASE FOR PRODUCTION	7/7/65	φ			

**NOTES :**

- 1- PRINT DIRECTLY ON FACE OF PLASTIC.
- 2- MAT'L : POLISHED WHITE OPAQUE VINYL, .015THK.
- 3- 4 HOLES 7/64 (.109) DIA. REQ'D.

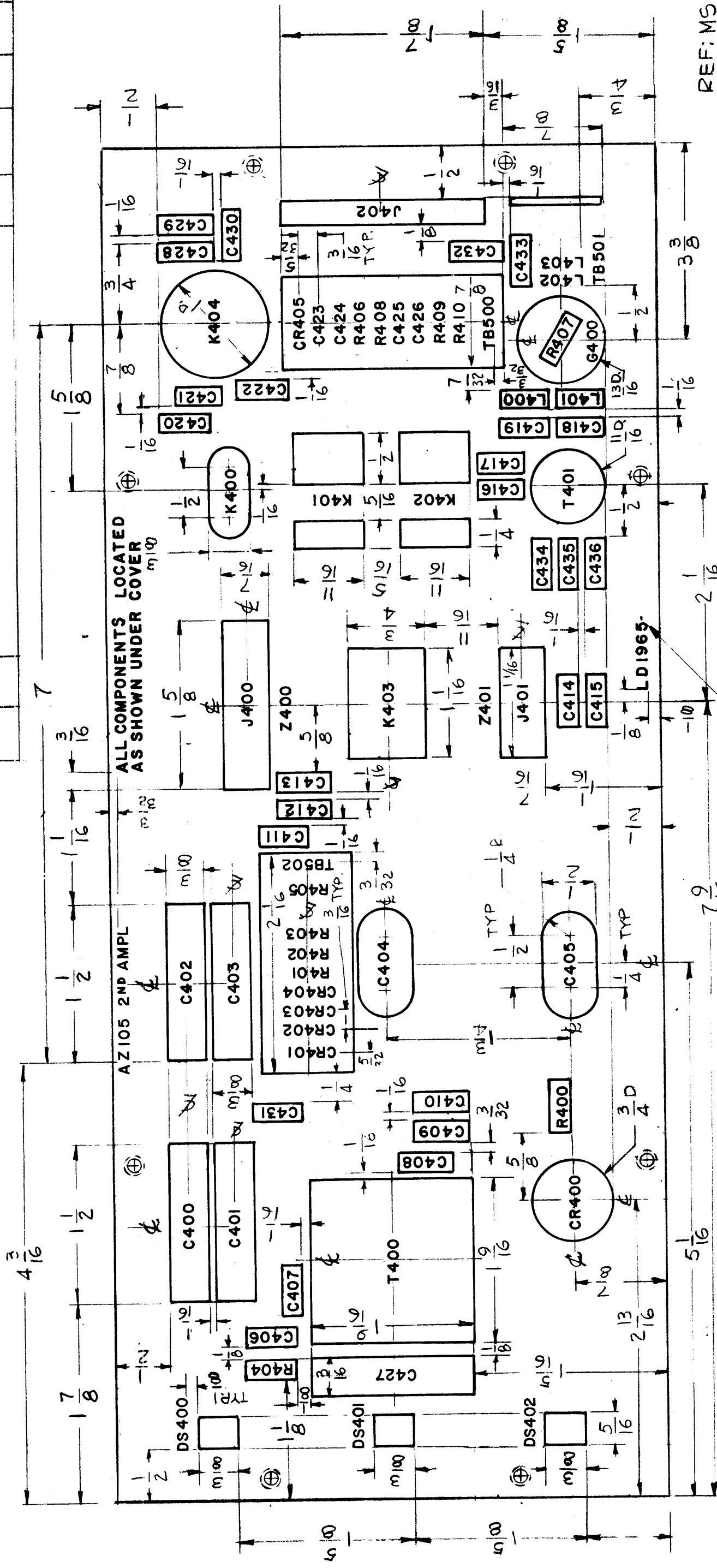
1	TRC-500-50U/300B	ASS'Y. NO.
Q'TY./UNIT	MODEL USED ON	
SCALE	CODE	
1:1	A	
THE CONTENTS OF THIS DRAWING ARE THE EXCLUSIVE PROPERTY OF THE TECHNICAL MATERIEL CORP. ITS UNAUTHORIZED USE OR REPRODUCTION IN WHOLE OR IN PART IS STRICTLY FORBIDDEN.		

REQ'D.	ITEM	PART NUMBER	DESCRIPTION	SYMBOL
<b>LIST OF MATERIAL</b>				
MATERIAL		THE TECHNICAL MATERIEL CORP. MAMARONECK, NEW YORK		
SEE NOTE 2		TITLE SCHEMATIC DIAGRAM MODEL TRC-500/50U/300B		
FINISH		DRAWN H. AUSTIN		
UNLESS OTHERWISE SPECIFIED DIMENSIONS ARE IN INCHES AND INCLUDE CHEMICALLY APPLIED OR PLATED FINISHES		DATE 7-2-65	FINAL APPROVAL <i>[Signature]</i>	
DECIMALS .X ± .05 .XX ± .01 .XXX ± .005		DATE 7-7-65	DATE 7/7/65	
TOLERANCES ± 1/64 ANGLES ± 0° 30'		DATE	DATE	
ELECT. DES.		DATE	DATE	
MECH. DES.		DATE	DATE	
			LDI960	
			SHEET	
			REV. LTR.	

**NOTES**

REVISIONS

SYM	DESCRIPTION	DATE	E.M.N. NO.	DRAFT	CHKD	APPD
X1	C434 RELOCATED. DIM K403/4 WA S. S/B	7-15-66	X1	G.D.L		
X2	C435 & C436 ADDED. R404, S, 6, 7, 8, 9 & 10 RELOCATED. L404, S, 6 DEL.	7-20-66	X2	G.D.L	CA	
Ø	ORIGINAL RELEASE FOR PRODUCTION	5-5-66	Ø	VHW		



REQ'D.	ITEM	PART NUMBER	DESCRIPTION	SYMBOL
	F. BUDETTI		LIST OF MATERIAL	
			THE TECHNICAL MATERIEL CORP.	
			MAMARONECK, NEW YORK	

REVISION	DATE	BY	DESCRIPTION
1	7-12-65	G.D.L	MARKING COVER BOTTOM MODULE
2	5-5-66	LD	

DATE	DATE	DATE	DATE
7-12-65	7-12-65	5-5-66	5-5-66
5/5/66	LD1965		

DATE	DATE	DATE	DATE
5/5/66	5/5/66	5/5/66	5/5/66

MARK TMC P/Ns.  
W/LATEST REV.  
LETTER

MARKING PROCESS: AS PER TMC SPECIFICATION S-727.  
 LETTERING: 3/32 HIGH BLACK GOTHIC, LOCATED AS SHOWN.  
 LINES: WIDTH OF STROKE .015

TYPICAL PER ALL C, R & L

THE CONTENTS OF THIS DRAWING ARE THE EXCLUSIVE PROPERTY OF THE TECHNICAL MATERIEL CORP. ITS UNAUTHORIZED USE OR REPRODUCTION IN WHOLE OR IN PART IS STRICTLY FORBIDDEN.

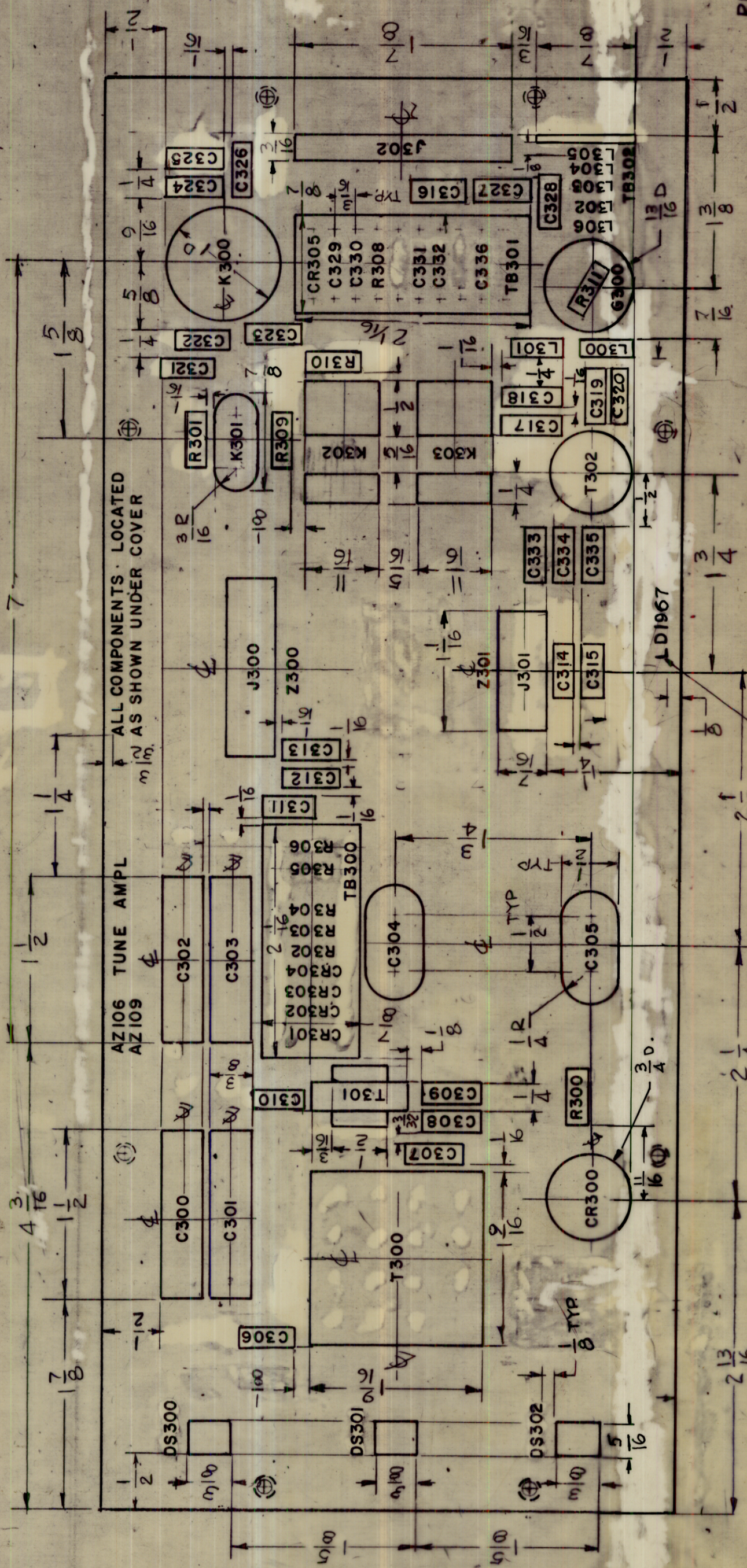
NOTES







SYM	DESCRIPTION	DATE	EMN NO.	DRAFT	CHKD	APPD
Ø	ORIGINAL RELEASE FOR PRODUCTION	5-5-66	Ø	WFO		
REVISIONS						
SYM	DESCRIPTION	DATE	EMN NO.	DRAFT	CHKD	APPD
X1	K 300 DELETED - K300 WAS K 304	7-19-65	X1	G.D.L		
X2	C333, 34, 35, 36 & L306 ADDED - R301, 309, 310, C307, 8, 9 & C316 RELOCATED	7-20-65	X2	G.D.L		



REF: MS 4294

REQ'D.	ITEM	PART NUMBER	DESCRIPTION	SYMBOL
	F. BUDETTI		LIST OF MATERIAL	
			THE TECHNICAL MATERIEL CORP.	
			MAMARONECK, NEW YORK	
			MARKING, COVER BOTTOM MODULE	

QTY./UNIT	MODEL USED ON	ASSY. NO.
2	TST ( ) IOK	AZ106 - AZ109
SCALE 1:1	CODE A	

DATE	EMN NO.	DRAFT	CHKD	APPD
7-19-65	X1	G.D.L		
7-20-65	X2	G.D.L		

MARKING PROCESS: AS PER TMC SPECIFICATION S-727  
 LETTERING: 3/32 HIGH BLACK GOTHIC, LOCATED AS SHOWN.  
 LINES: WIDTH OF STROKE .015  
 TYPICAL PER ALL C, R & L

NOTES

UNLESS OTHERWISE SPECIFIED DIMENSIONS ARE IN INCHES AND INCLUDE CHEMICALLY APPLIED OR PLATED FINISHES

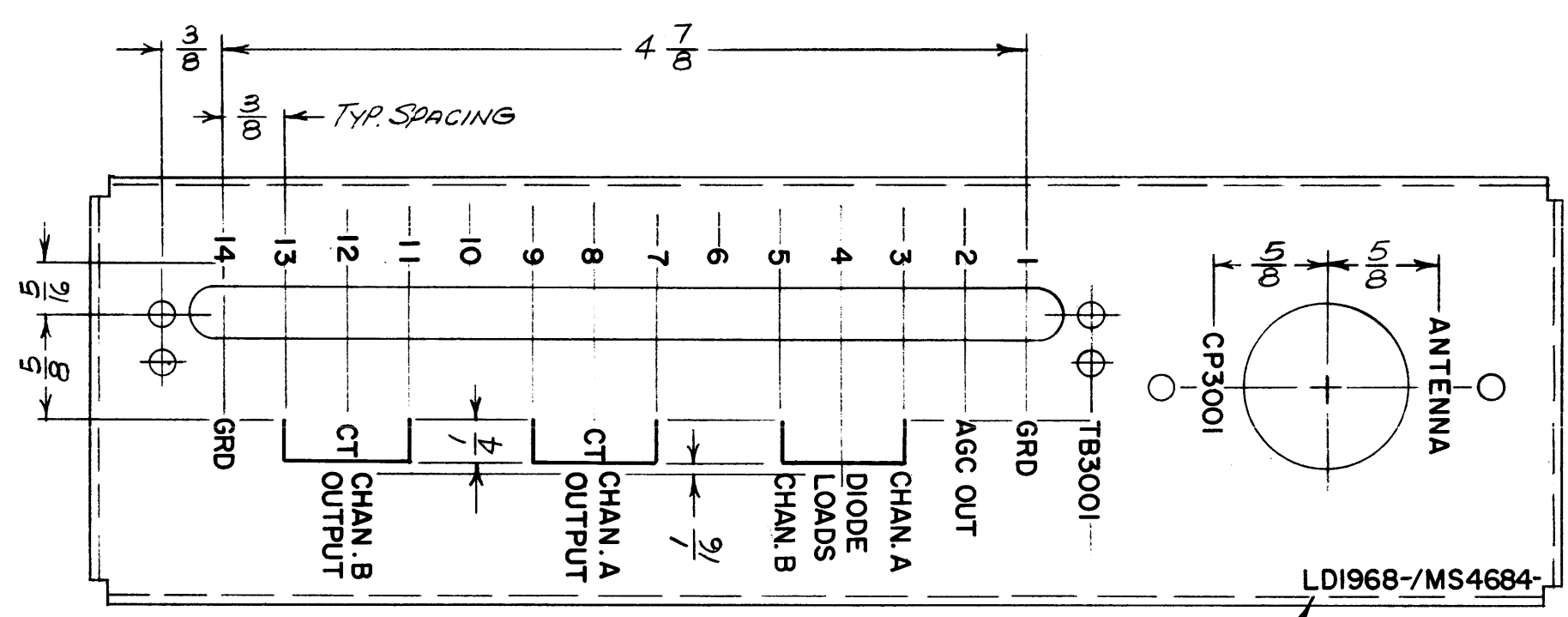
TOLERANCES  
 DECIMALS  
 .XX ± .01  
 .XXX ± .005  
 FRACTIONS  
 ± 1/64  
 ANGLES  
 ± 0° 30'

DATE	FINAL APPROVAL	DATE	DATE	DATE	DATE
7-13-65					
5-5-66					
3/5/66					



LD1968

REVISIONS					
SYM	DESCRIPTION	DATE	E.M.N. NO.	DRAFT	CHKD APPD
X1	ADDED "CHAN. A," "CHAN. B" TO DIODE LOADS	8.4.65	X1	HCA	
Ø	ORIGINAL RELEASE FOR PRODUCTION	8/9/65		HV	



MARK TMC PT. No.  
W/LATEST REV. LETTERS

MARKING PROCESS: AS PER TMC SPECIFICATION S-727.  
 LETTERING: 1/8 HIGH BLACK GOTHIC, LOCATED AS SHOWN.  
 LINES: .010 WIDE STROKE

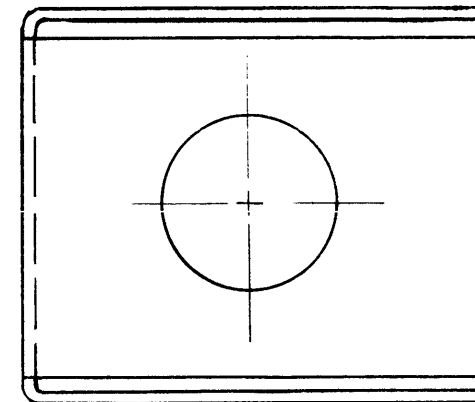
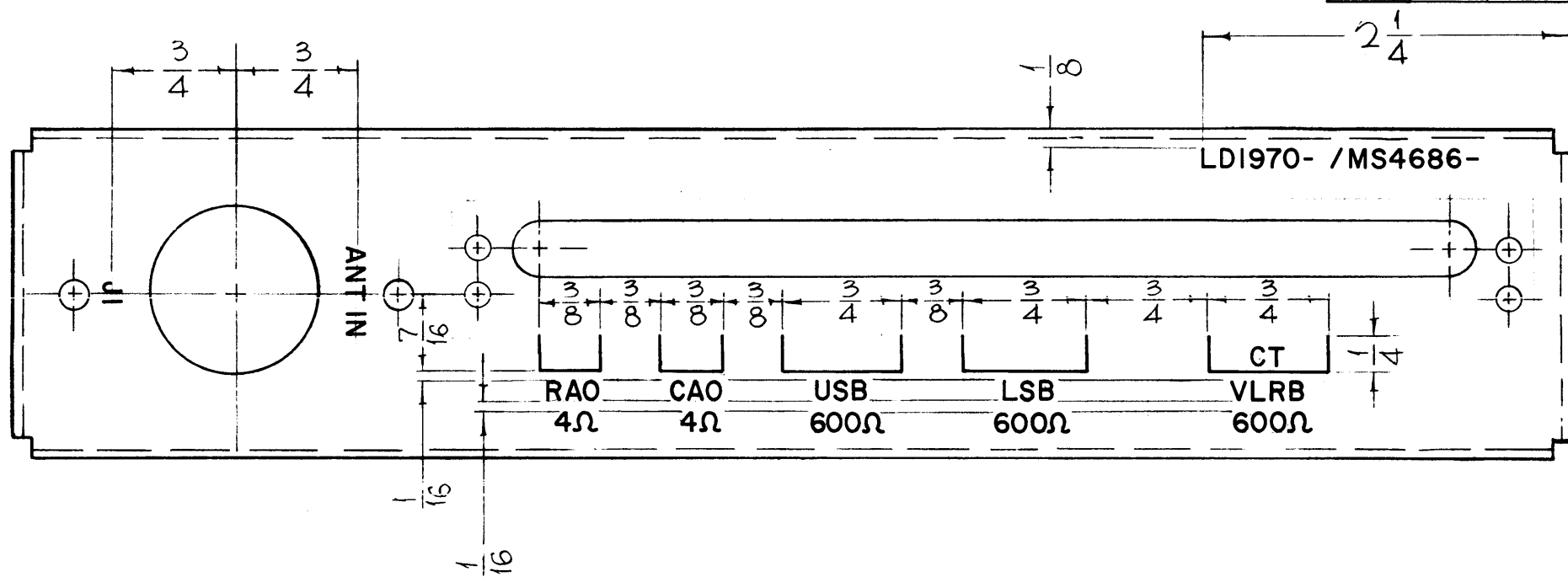
REQ'D.	ITEM	PART NUMBER	DESCRIPTION	SYMBOL
<b>EATON LIST OF MATERIAL</b>				
MATERIAL		<b>THE TECHNICAL MATERIEL CORP.</b> MAMARONECK, NEW YORK		
FINISH		TITLE <i>MARKING, CHASSIS</i>		
UNLESS OTHERWISE SPECIFIED DIMENSIONS ARE IN INCHES AND INCLUDE CHEMICALLY APPLIED OR PLATED FINISHES		DRAWN <i>H. Austin</i>	DATE 7.21.65	FINAL APPROVAL <i>[Signature]</i>
		CHECKED <i>[Signature]</i>	DATE 7.21-65	DATE 8/9/65
DECIMALS .X ± .05 .XX ± .01 .XXX ± .005		FRACTIONS ± 1/64 ANGLES ± 0° 30'		DATE LD1968
TOLERANCES		MECH. DES. <i>[Signature]</i>		DATE
		SHEET		REV. LTR. Ø

RAK-102-4	
Q'TY./UNIT	MODEL USED ON
SCALE 1:1	ASS'Y. NO.
CODE A	
THE CONTENTS OF THIS DRAWING ARE THE EXCLUSIVE PROPERTY OF THE TECHNICAL MATERIEL CORP. ITS UNAUTHORIZED USE OR REPRODUCTION IN WHOLE OR IN PART IS STRICTLY FORBIDDEN.	

NOTES

LD1970

REVISIONS						
SYM	DESCRIPTION	DATE	E.M.N. NO.	DRAFT	CHKD	APPD
Ø	ORIGINAL RELEASE FOR PRODUCTION	8/7/69	Ø	W		



REF TMC DWG MS4686

MARKING PROCESS: AS PER TMC SPECIFICATION S-727.

LETTERING: 1/8 HIGH BLACK GOTHIC, LOCATED AS SHOWN.

LINES TO BE BLACK, .015 WIDE

**NOTES**

1	LRRA-1	
Q'TY./UNIT	MODEL USED ON	ASS'Y. NO.
SCALE	CODE	
THE CONTENTS OF THIS DRAWING ARE THE EXCLUSIVE PROPERTY OF THE TECHNICAL MATERIEL CORP. ITS UNAUTHORIZED USE OR REPRODUCTION IN WHOLE OR IN PART IS STRICTLY FORBIDDEN.		

REQ'D.	ITEM	PART NUMBER	DESCRIPTION	SYMBOL
STURMER LIST OF MATERIAL				
MATERIAL			THE TECHNICAL MATERIEL CORP. MAMARONECK, NEW YORK	
FINISH			TITLE MARKING, CHASSIS, OUTPUT	
UNLESS OTHERWISE SPECIFIED DIMENSIONS ARE IN INCHES AND INCLUDE CHEMICALLY APPLIED OR PLATED FINISHES			DRAWN JC CHECKED [Signature] ELECT. DES. MECH. DES.	DATE 8-4-65 DATE 8/4/66 DATE DATE
DECIMALS .X ± .05 .XX ± .01 .XXX ± .005			TOLERANCES FRACTIONS ± 1/64 ANGLES ± 0° 30'	
			FINAL APPROVAL [Signature] DATE 8/7/69 LD1970 SHEET	DATE REV. LTR.



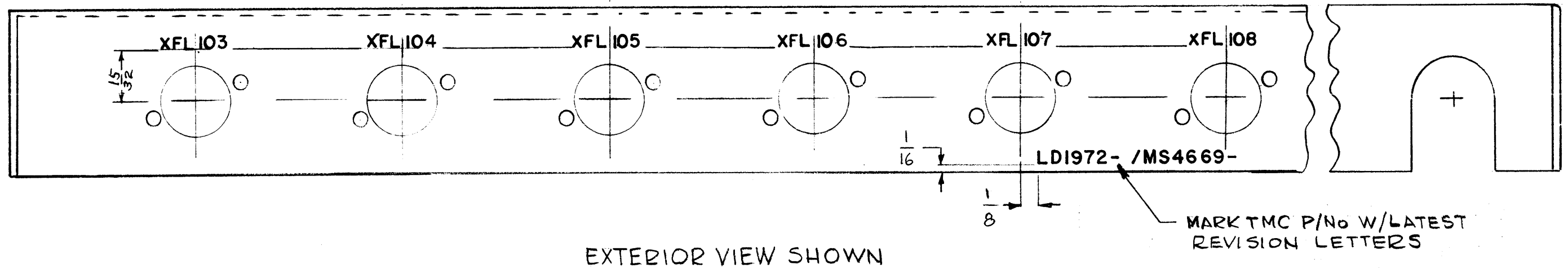
LD1972

REVISIONS

SYM	DESCRIPTION	DATE	E.M.N. NO.	DRAFT	CHKD	APPD
XI	All Socket Numbers Changed XFL 103 was XFL 101 (TYP)	19/10/65				
Ø	ORIGINAL RELEASE FOR PRODUCTION	10/26/65				

MARKING PROCESS: AS PER TMC SPECIFICATION S-727.

LETTERING: 1/8 HIGH BLACK GOTHIC, LOCATED AS SHOWN.



EXTERIOR VIEW SHOWN

REF: MS 4669

REQ'D.	ITEM	PART NUMBER	DESCRIPTION	SYMBOL
<b>LANGER LIST OF MATERIAL</b>				
MATERIAL			<b>THE TECHNICAL MATERIEL CORP. MAMARONECK, NEW YORK</b>	
FINISH			TITLE <b>MARKING, CHASSIS, MAIN</b>	
UNLESS OTHERWISE SPECIFIED DIMENSIONS ARE IN INCHES AND INCLUDE CHEMICALLY APPLIED OR PLATED FINISHES			DRAWN <i>[Signature]</i> CHECKED <i>[Signature]</i> ELECT. DES. <i>[Signature]</i> MECH. DES. <i>[Signature]</i>	DATE 7-20-65 DATE 9/29/65 DATE DATE
Q'TY./UNIT SCALE 1:1			MODEL USED ON CODE A	ASS'Y. NO. AS130-2 AS130-1
THE CONTENTS OF THIS DRAWING ARE THE EXCLUSIVE PROPERTY OF THE TECHNICAL MATERIEL CORP. ITS UNAUTHORIZED USE OR REPRODUCTION IN WHOLE OR IN PART IS STRICTLY FORBIDDEN.			DECIMALS .X ± .05 .XX ± .01 .XXX ± .005	FRACTIONS ± 1/64 ANGLES ± 0° 30'
NOTES			FINAL APPROVAL <i>[Signature]</i> LD1972	DATE 10/10/65 REV. LTR. Ø

K1/L ak 10/27







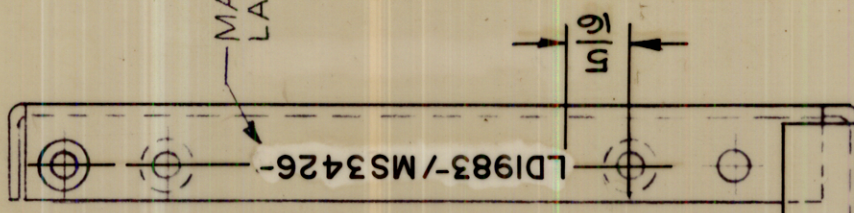
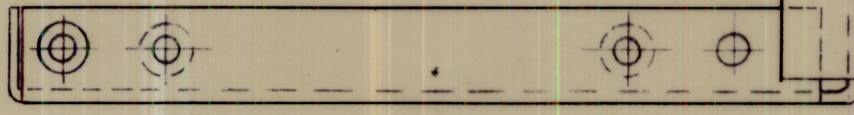
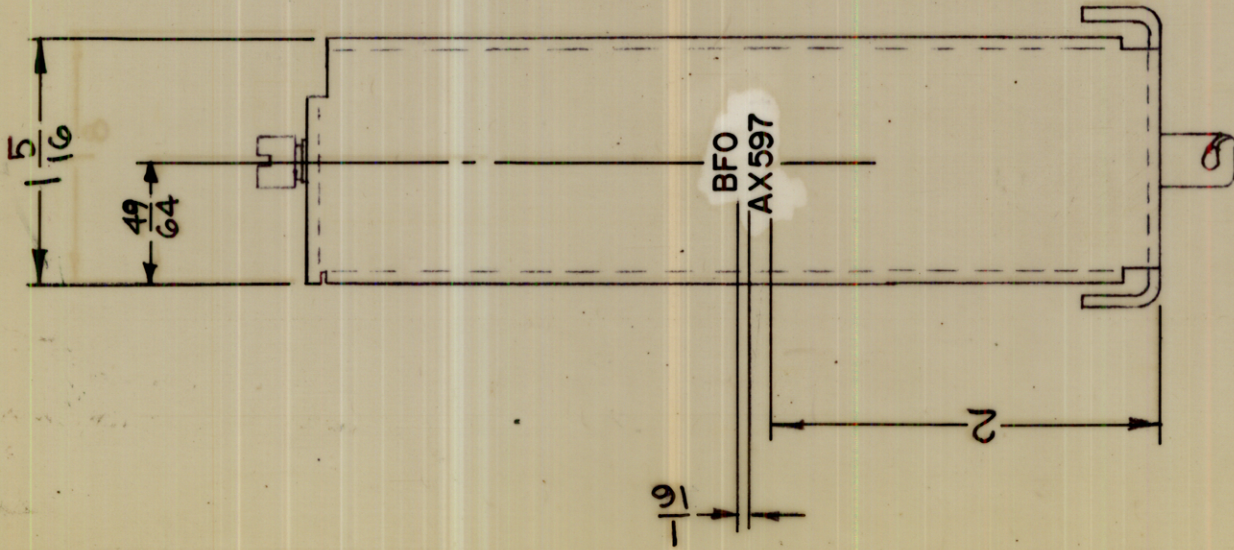




REVISIONS

SYM	DESCRIPTION	DATE	E.M.N. NO.	DRAFT	CHKD	APPD
Ø	ORIGINAL RELEASE FOR PRODUCTION	8/19/65		RVK		

LD1983



MARK TMC PART NO. WITH LATEST REVISION LETTERS

REF.: MS3426

REQ'D.	ITEM	PART NUMBER	DESCRIPTION	SYMBOL
	M. ZETENA		LIST OF MATERIAL	
			THE TECHNICAL MATERIEL CORP. MAMARONECK, NEW YORK	
			TITLE MARKING, FRAME, MTG -BFO MODULE	

QTY./UNIT	MODEL USED ON	ASS'Y. NO.
1	VLRE-1	AX597

DRAWN	DATE	FINAL APPROVAL	DATE
H. JUSTIN	8-10-65	[Signature]	8/19/65
CHECKED	DATE	ELECT. DES.	DATE
[Signature]	8/17/65		
MECH. DES.	DATE	REV. LTR.	SHEET
[Signature]	8/19/65		Ø

NOTES

- UNLESS OTHERWISE SPECIFIED -  
 MARKING PROCESS: AS PER TMC SPECIFICATION S-727.  
 LETTERING: 1/8 HIGH BLACK GOTHIC, LOCATED AS SHOWN.

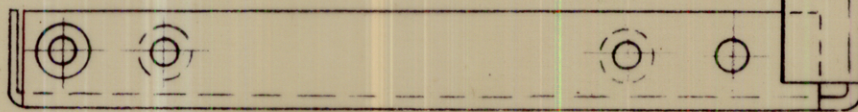
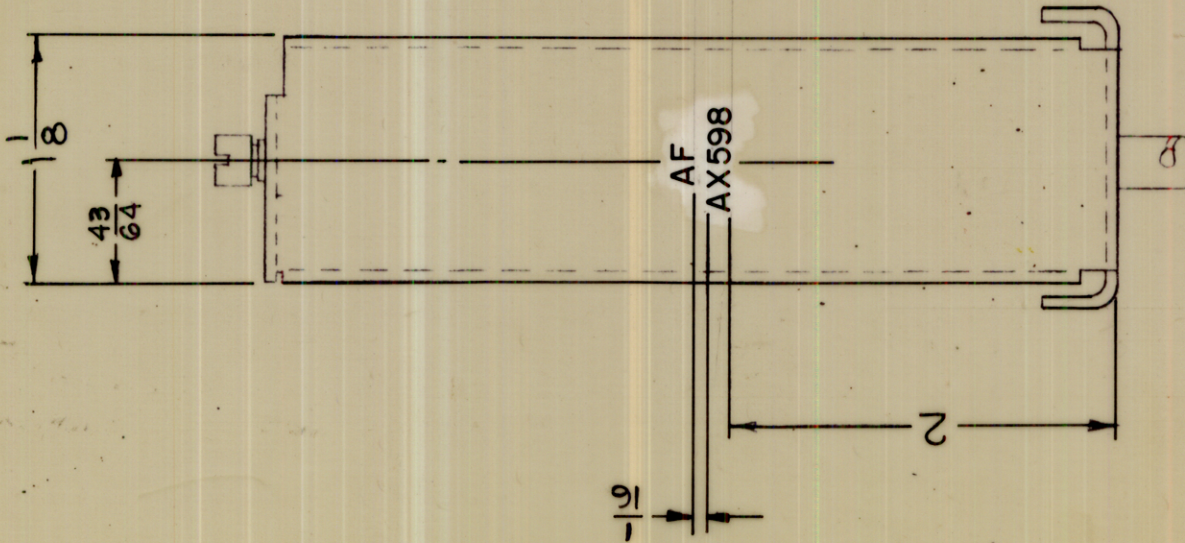
THE CONTENTS OF THIS DRAWING ARE THE EXCLUSIVE PROPERTY OF THE TECHNICAL MATERIEL CORP. ITS UNAUTHORIZED USE OR REPRODUCTION IN WHOLE OR IN PART IS STRICTLY FORBIDDEN.



REVISIONS

SYM	DESCRIPTION	DATE	E.M.N. NO.	DRAFT	CHKD	APPD
Ø	ORIGINAL RELEASE FOR PRODUCTION	8-17-65	+	☑		

LD1984



MARK TMC PART NO. WITH LATEST REVISION LETTERS.

- UNLESS OTHERWISE SPECIFIED

MARKING PROCESS: AS PER TMC SPECIFICATION S-727.

LETTERING: 1/8 HIGH BLACK GOTHIC, LOCATED AS SHOWN.

REF.: MS 3429

REQ'D.	ITEM	PART NUMBER	DESCRIPTION	SYMBOL
	M. ZETENA		LIST OF MATERIAL	
			THE TECHNICAL MATERIEL CORP. MAMARONECK, NEW YORK	
			TITLE MARKING, FRAME, MTG - AF MODULE	

QTY./UNIT	MODEL USED ON	ASSY. NO.
SCALE 1:1	VLRE-1	AX598
	CODE A	

DRAWN	DATE	FINAL APPROVAL	DATE
H. AUSTIN	8-10-65	<i>[Signature]</i>	8/19/65
CHECKED	DATE		
<i>[Signature]</i>	8/18/65		
ELECT. DES.	DATE		
MECH. DES.	DATE		
		LD1984	
			REV. LTR.
			8/18/65 SHEET

UNLESS OTHERWISE SPECIFIED DIMENSIONS ARE IN INCHES AND INCLUDE CHEMICALLY APPLIED OR PLATED FINISHES

DECIMALS  
X ± .05  
XX ± .01  
XXX ± .005

FRACTIONS  
± 1/64  
ANGLES  
± 0° 30'

TOLERANCES

NOTES

THE CONTENTS OF THIS DRAWING ARE THE EXCLUSIVE PROPERTY OF THE TECHNICAL MATERIEL CORP. ITS UNAUTHORIZED USE OR REPRODUCTION IN WHOLE OR IN PART IS STRICTLY FORBIDDEN.







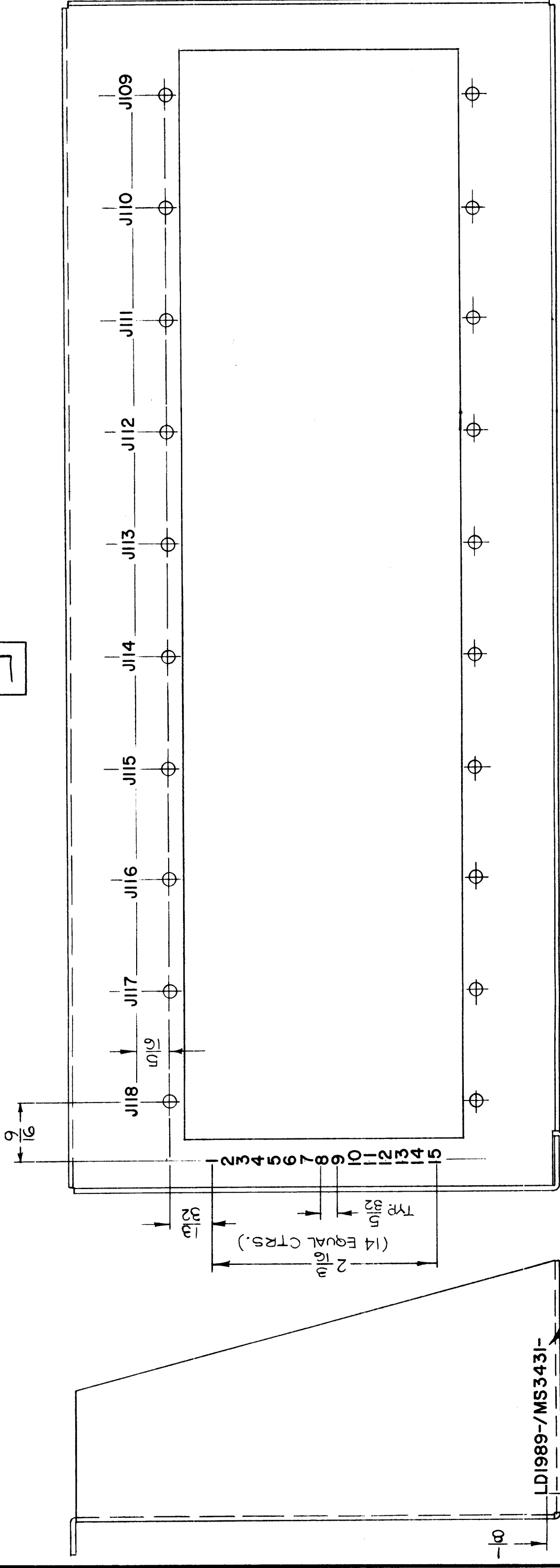




REVISIONS

SYM	DESCRIPTION	DATE	E.M.N. NO.	DRAFT	CHKD	APPD
Ø	ORIGINAL RELEASE FOR PRODUCTION	8/19/65	Ø	P.V.V.		

LD1989



REF. : MS3431

REQ'D.	ITEM	PART NUMBER	DESCRIPTION	SYMBOL
	ZETENA		LIST OF MATERIAL	

THE TECHNICAL MATERIEL CORP. MAMARONECK, NEW YORK		DATE	FINAL APPROV.	DATE
DRAWN	H. AUSTIN	8-19-65	<i>[Signature]</i>	8/19/65
CHECKED	<i>[Signature]</i>	8/19/65		
ELECT. DES.				
MECH. DES.	<i>[Signature]</i>	8/19/65		

QTY./UNIT	MODEL USED ON	ASSY. NO.
1	VLR-1	

UNLESS OTHERWISE SPECIFIED	FRACTIONS
DIMENSIONS ARE IN INCHES AND INCLUDE CHEMICALLY APPLIED OR PLATED FINISHES	± 1/64
DECIMALS	ANGLES
.X ± .05	± 0° 30'
.XX ± .01	
.XXX ± .005	

NOTES

MARKING PROCESS: AS PER TMC SPECIFICATION S-727.  
 MARKING: BLACK GOTHIC, LOCATED AS SHOWN.