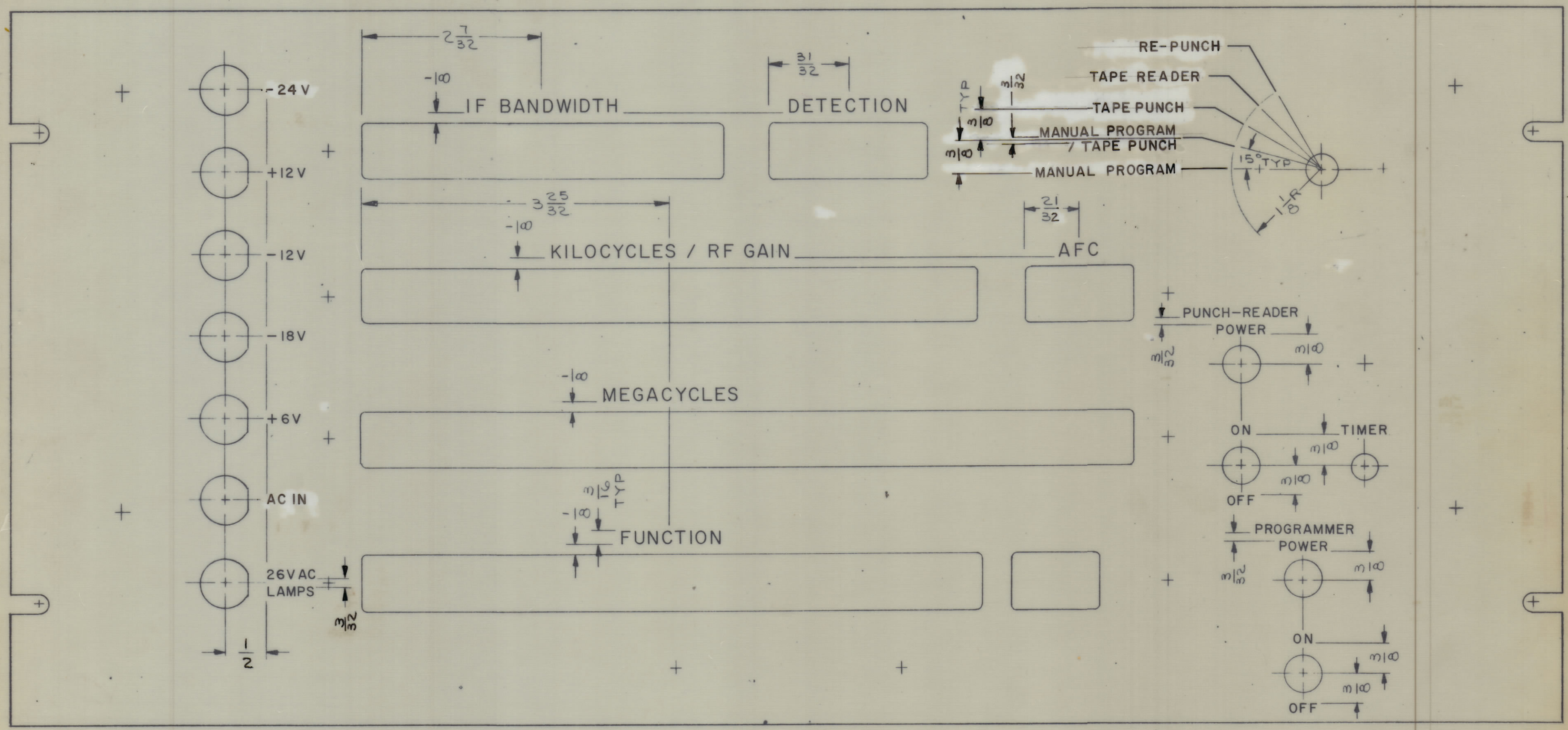


| REVISIONS |     |                  |         |            |      |
|-----------|-----|------------------|---------|------------|------|
| ZONE      | SYM | DESCRIPTION      | DATE    | E.M.N. NO. | APPD |
|           | Ø   | ORIGINAL RELEASE | 8-27-65 | Ø          | GDL  |



REAR VIEW SHOWN

| HEIGHT OF LETTER | DEPTH OF STROKE | WIDTH OF STROKE |
|------------------|-----------------|-----------------|
| 1/8              | .010            | .020            |
| 3/16             | .010            | .025            |
| LINES            | .010            | .015            |

- ~ UNLESS OTHERWISE SPECIFIED ~
- 1-ALL LETTERING GROUPS TO BE CENTERED ON HOLES.
  - 2-ENGRAVING TO BE 1/8 HIGH GOTHIC.
  - 3-ALL LETTERING & LINEWORK TO BE WHITE FILLED.
  - 4-ALL ENGRAVING AS PER TMC SPEC. S566

NOTES

|   |               |           |
|---|---------------|-----------|
| 1   | RTPG-1        | A 3856    |
| QTY./UNIT   | MODEL USED ON | ASBY. NO. |
| SCALE 1:1   | CODE A        |           |
| THE CONTENTS OF THIS DRAWING ARE THE EXCLUSIVE PROPERTY OF THE TECHNICAL MATERIEL CORP. ITS UNAUTHORIZED USE OR REPRODUCTION IN WHOLE OR IN PART IS STRICTLY FORBIDDEN. |               |           |

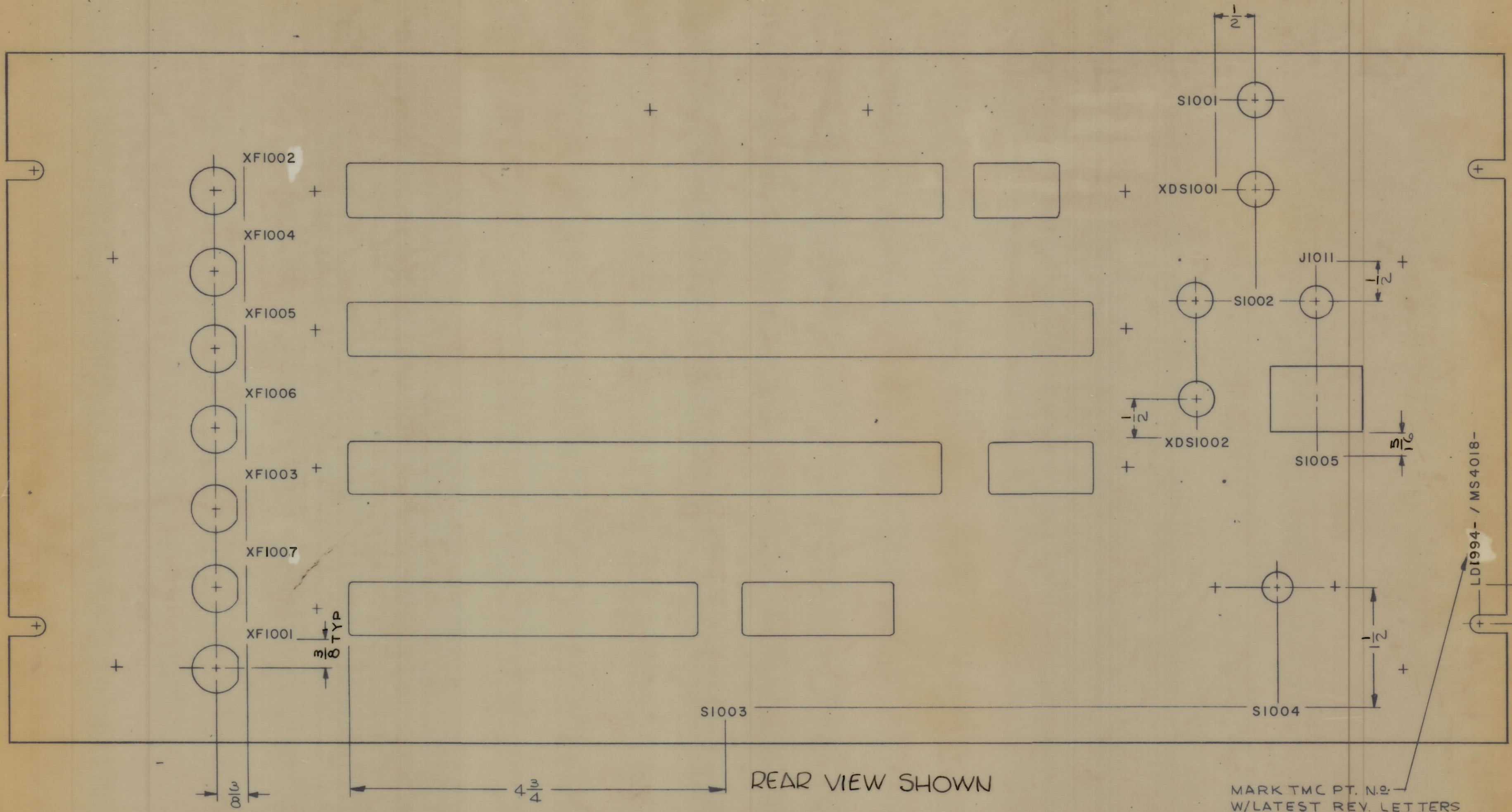
REF. MS 4018

| REQ'D.                       | ITEM | PART NUMBER  | DESCRIPTION  | SYMBOL |
|------------------------------|------|--------------|--|--------|
| F. E. EATON LIST OF MATERIAL |      |              |  |        |
| MATERIAL #                   |      |              | THE TECHNICAL MATERIEL CORP. MAMARONECK, NEW YORK        |        |
| FINISH SEE NOTES             |      |              | TITLE MARKING - PANEL, FRONT MARKING PROCESS - ENGRAVING |        |
| DRAWN G.D.L.                 |      | DATE 8-25-65 | FINAL APPROVAL   |        |
| CHECKED JCB                  |      | DATE 8/25/65 | DATE 8/27/65   |        |
| SELECT. DES. W. JORDAN       |      | DATE 8/25/65 | DATE 8/25/65   |        |
| MECH. DES. W. JORDAN         |      |              | DATE 8/25/65   |        |
| SHEET 1 OF 2                 |      |              | REV. LTR.  |        |

LD1994 Ø



| REVISIONS |     |                  |         |            |        |      |      |
|-----------|-----|------------------|---------|------------|--------|------|------|
| ZONE      | SYM | DESCRIPTION      | DATE    | E.M.N. NO. | DRAFT  | CHKD | APPD |
|           | Ø   | ORIGINAL RELEASE | 8-27-65 | Ø          | G.D.L. |      |      |



- ~ UNLESS OTHERWISE SPECIFIED ~
- 1- MARKING PROCESS: AS PER TMC SPECIFICATION S-727.
  - 2- LETTERING: 1/8 HIGH BLACK GOTHIC, LOCATED AS SHOWN.

REF. : MS 4018

| REQ'D.   | ITEM | PART NUMBER  | DESCRIPTION                         | SYMBOL         |
|--|------|--------------|-------------------------------------|----------------|
| <b>F. E. EATON LIST OF MATERIAL</b>  |      |              |                                     |                |
| MATERIAL   |      |              | <b>THE TECHNICAL MATERIEL CORP.</b> |                |
|  |      |              | MAMARONECK, NEW YORK                |                |
| FINISH   |      |              | TITLE                               |                |
|  |      |              | MARKING - PANEL FRONT               |                |
| UNLESS OTHERWISE SPECIFIED   |      | DRAWN        | DATE                                | FINAL APPROVAL |
| DIMENSIONS ARE IN INCHES AND INCLUDE CHEMICALLY APPLIED OR PLATED FINISHES |      | G.D.L.       | 8-25-65                             | W. Jordan      |
| DECIMALS   |      | CHECKED      | DATE                                | DATE           |
| .X ± .05   |      | JCB          | 8/25/65                             | 8/27/65        |
| .XX ± .01  |      | ELECT. DES.  | DATE                                |                |
| .XXX ± .005  |      | MECH. DES.   | DATE                                |                |
| TOLERANCES   |      | W. JORDAN    | 8/27/65                             |                |
| FRACTIONS ± 1/64   |      | SHEET 2 OF 2 |                                     | REV. LTR.      |
| ANGLES ± 0° 30'  |      | LD1994       |                                     | Ø              |

| RTPG-1  |               |            |
|---|---------------|------------|
| QTY./UNIT   | MODEL USED ON | ASS'Y. NO. |
| SCALE   | CODE          |            |
| 1:1   | A             |            |
| THE CONTENTS OF THIS DRAWING ARE THE EXCLUSIVE PROPERTY OF THE TECHNICAL MATERIEL CORP. ITS UNAUTHORIZED USE OR REPRODUCTION IN WHOLE OR IN PART IS STRICTLY FORBIDDEN. |               |            |

NOTES