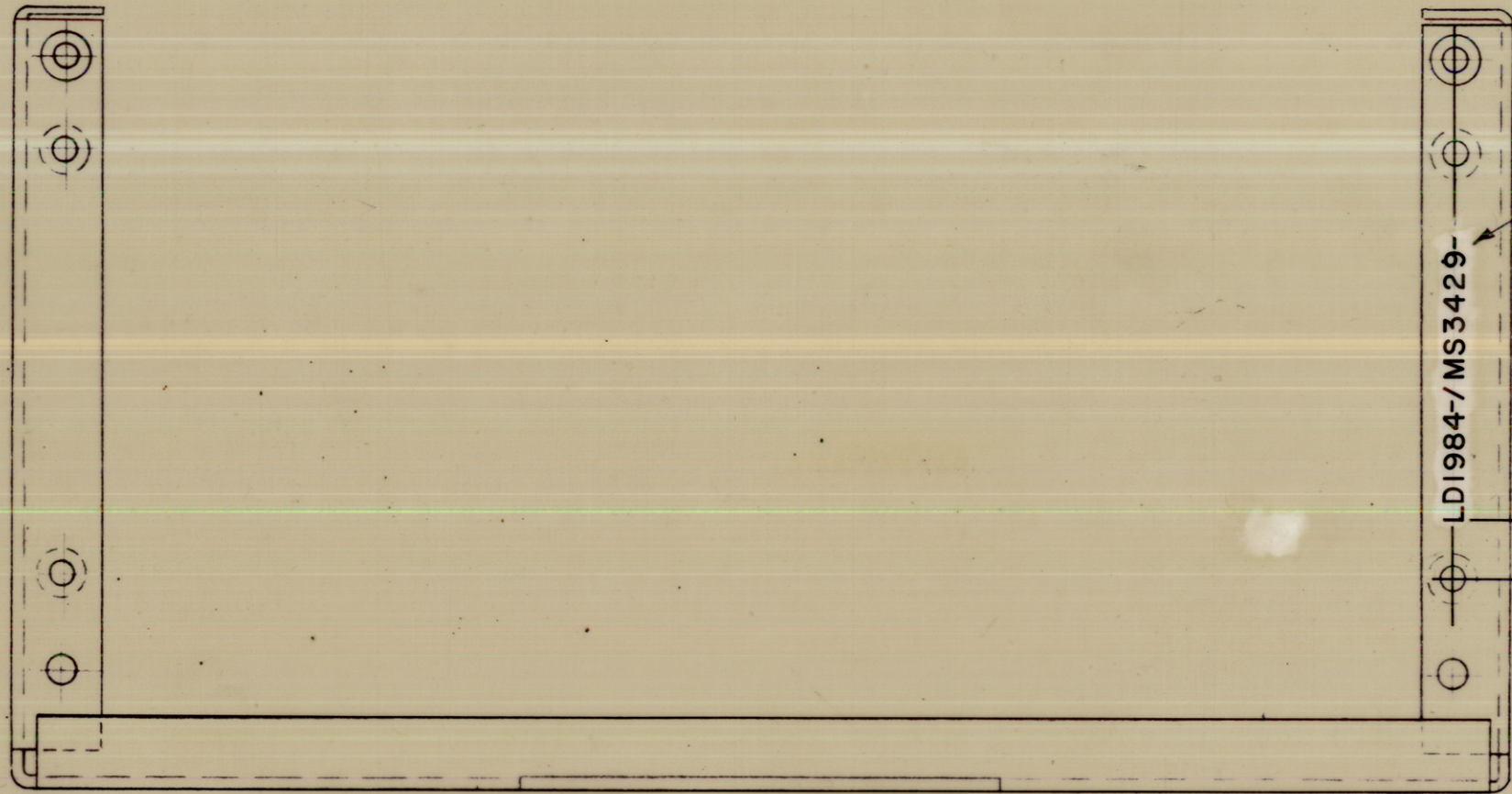
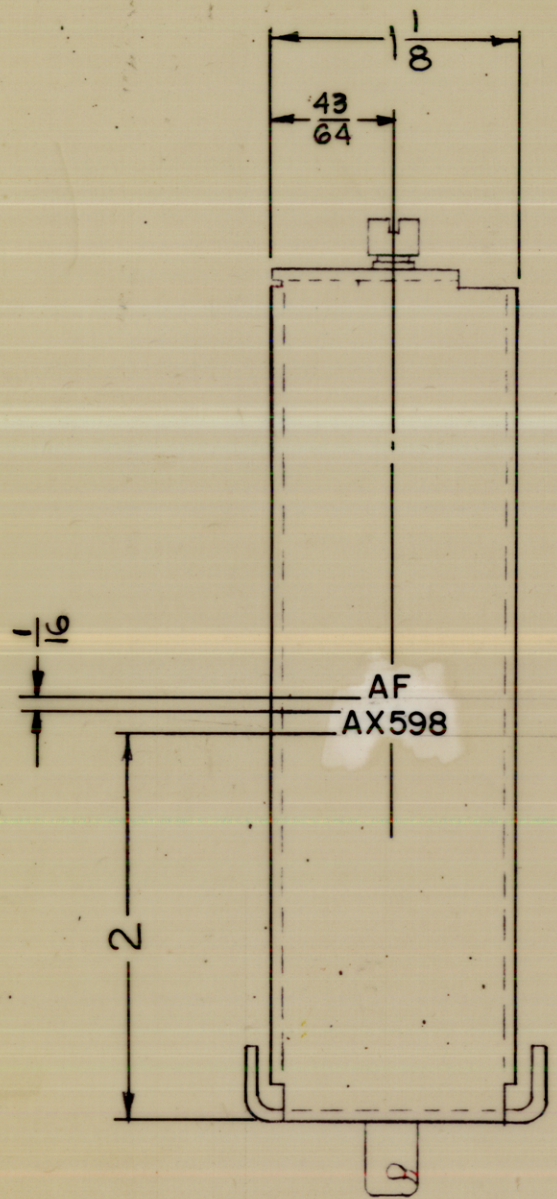


SYM	REVISIONS					
	DESCRIPTION	DATE	E.M.N. NO.	DRAFT	CHKD	APPD
Ø	ORIGINAL RELEASE FOR PRODUCTION	8-19-65	+	☑		

LD1984



MARK TMC PART NO. WITH LATEST REVISION LETTERS.

LD1984-MS3429

- UNLESS OTHERWISE SPECIFIED

MARKING PROCESS: AS PER TMC SPECIFICATION S-727.  
 LETTERING: 1/8 HIGH BLACK GOTHIC, LOCATED AS SHOWN.

REF.: MS3429

REQ'D.	ITEM	PART NUMBER	DESCRIPTION	SYMBOL
M. ZETENA LIST OF MATERIAL				
MATERIAL		THE TECHNICAL MATERIEL CORP. MAMARONECK, NEW YORK		
FINISH		TITLE MARKING, FRAME, MTG - AF MODULE		
UNLESS OTHERWISE SPECIFIED DIMENSIONS ARE IN INCHES AND INCLUDE CHEMICALLY APPLIED OR PLATED FINISHES				
DRAWN H. AUSTIN		DATE 8-10-65	FINAL APPROVAL <i>[Signature]</i>	
CHECKED <i>[Signature]</i>		DATE 8/18/65	DATE 8/19/65	
ELECT. DES.		DATE	LD1984	
MECH. DES. <i>[Signature]</i>		DATE 8/18/65	SHEET	
DECIMALS .X ± .05 .XX ± .01 .XXX ± .005		FRACTIONS ± 1/64 ANGLES ± 0° 30'		REV. LTR.

1	VLRE-1	AX598
Q'TY./UNIT	MODEL USED ON	ASS'Y. NO.

SCALE 1:1	CODE A
--------------	-----------

THE CONTENTS OF THIS DRAWING ARE THE EXCLUSIVE PROPERTY OF THE TECHNICAL MATERIEL CORP. ITS UNAUTHORIZED USE OR REPRODUCTION IN WHOLE OR IN PART IS STRICTLY FORBIDDEN.

NOTES