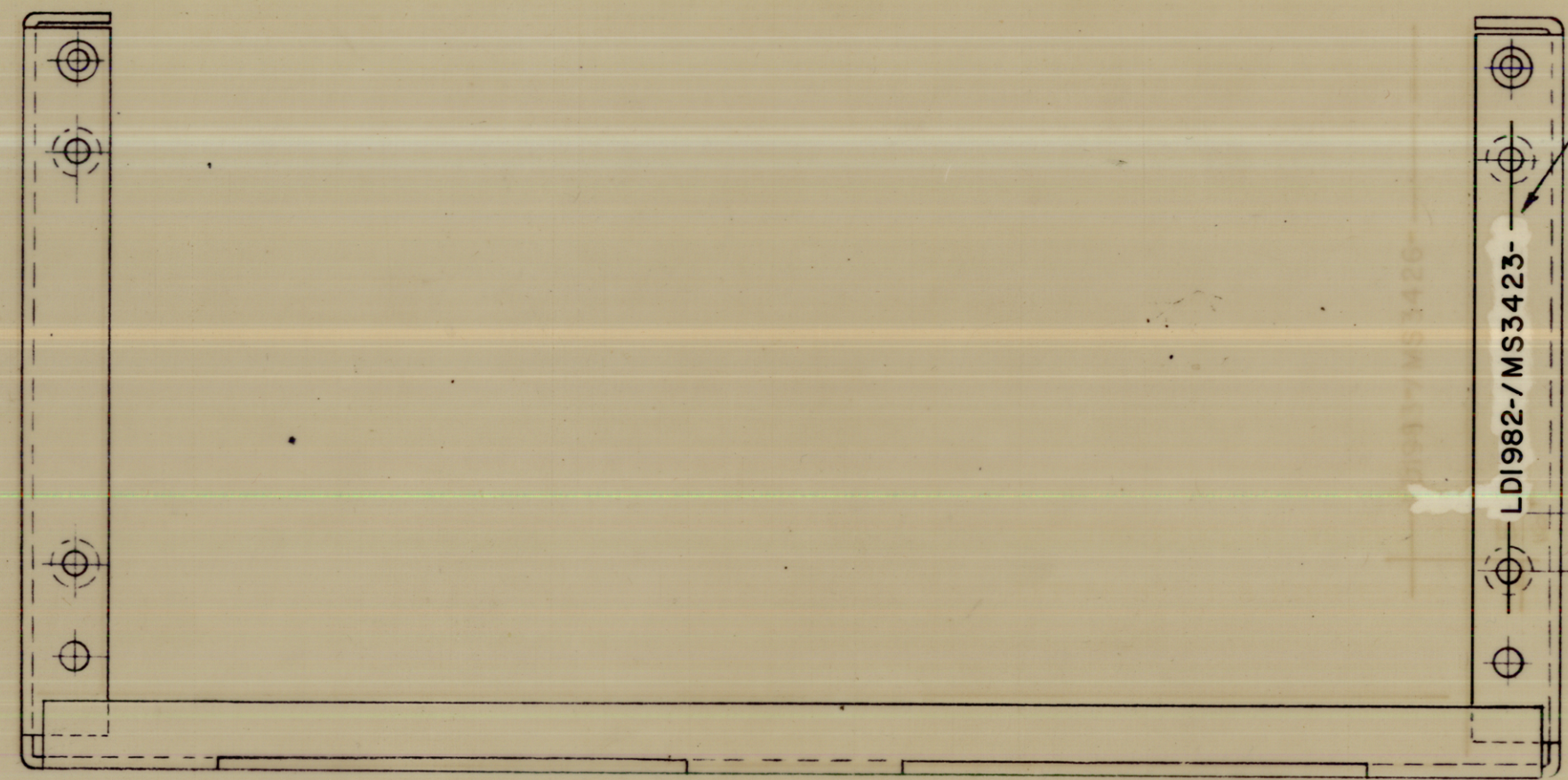
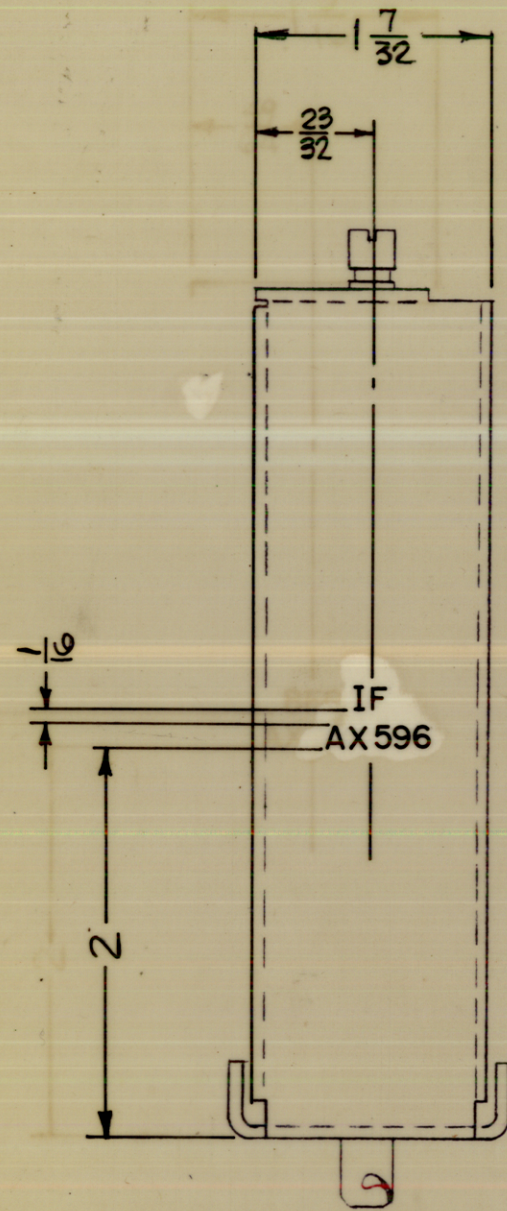


REVISIONS						
SYM	DESCRIPTION	DATE	E.M.N. NO.	DRAFT	CHKD	APPD
0	ORIGINAL RELEASE FOR PRODUCTION	8-19-65				

LD1982



MARK TMC PART NO. WITH LATEST REVISION LETTERS.

REF.: MS3423

UNLESS OTHERWISE SPECIFIED

MARKING PROCESS: AS PER TMC SPECIFICATION S-727.

LETTERING: 1/8 HIGH BLACK GOTHIC, LOCATED AS SHOWN.

REQ'D.	ITEM	PART NUMBER	DESCRIPTION	SYMBOL
M. ZETENA LIST OF MATERIAL				
MATERIAL		THE TECHNICAL MATERIEL CORP. MAMARONECK, NEW YORK		
FINISH		TITLE MARKING, FRAME, MTG.- IF MODULE		
UNLESS OTHERWISE SPECIFIED DIMENSIONS ARE IN INCHES AND INCLUDE CHEMICALLY APPLIED OR PLATED FINISHES		DRAWN: <i>H. Austin</i> CHECKED: <i>JOB</i>	DATE: 8-10-65 DATE: 8/17/65	FINAL APPROVAL: <i>[Signature]</i> DATE: 8/19/65
DECIMALS: .X ± .05 .XX ± .01 .XXX ± .005		TOLERANCES: ± 1/64 ANGLES: ± 0° 30'		ELECT. DES. DATE MECH. DES. <i>Rac.</i> DATE: 8/18/65
THE CONTENTS OF THIS DRAWING ARE THE EXCLUSIVE PROPERTY OF THE TECHNICAL MATERIEL CORP. ITS UNAUTHORIZED USE OR REPRODUCTION IN WHOLE OR IN PART IS STRICTLY FORBIDDEN.				SHEET: LD1982 REV. LTR.

1	VLRE-1	AX 596
Q'TY./UNIT	MODEL USED ON	ASS'Y. NO.
SCALE: 1:1	CODE: A	

NOTES