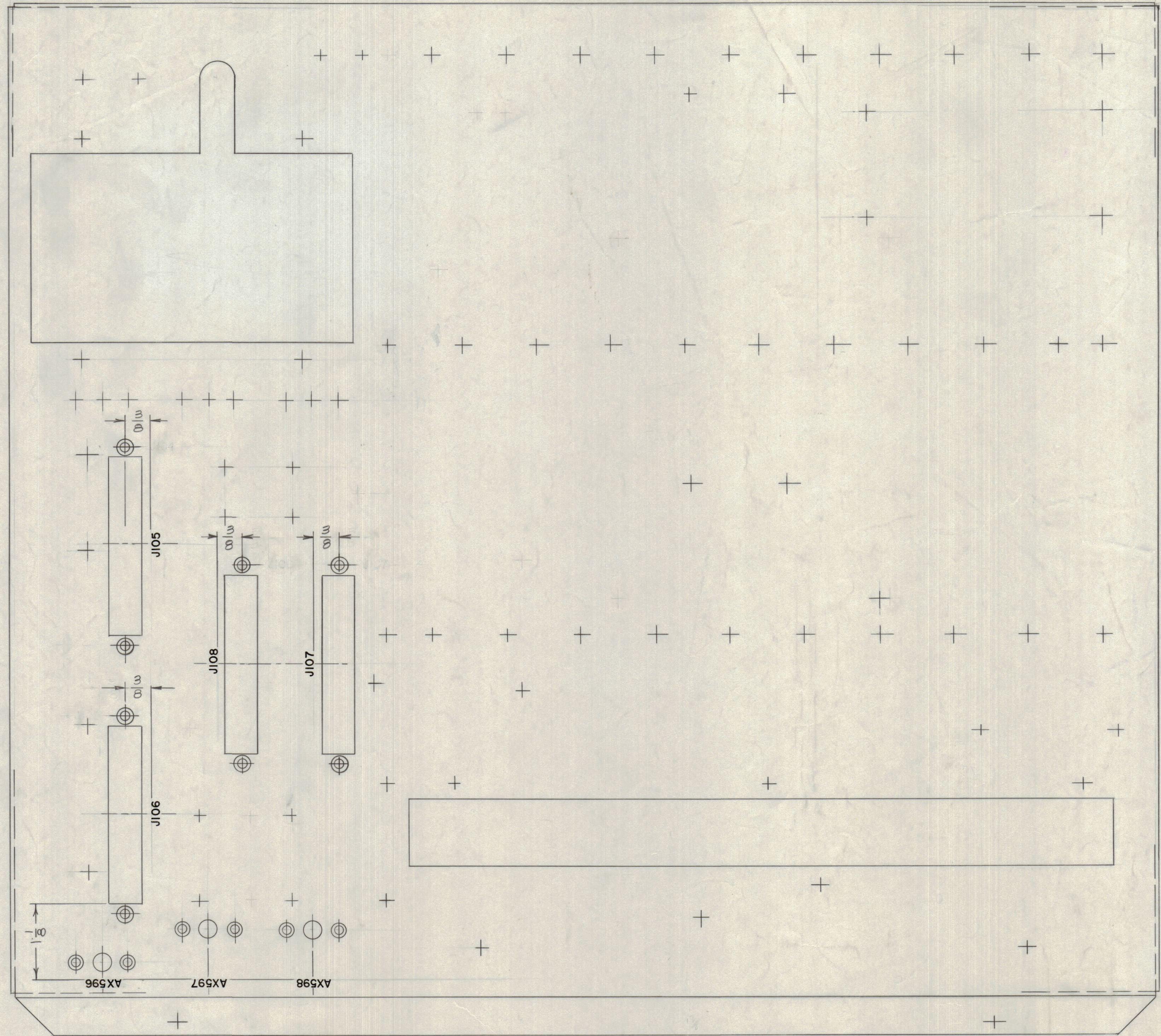
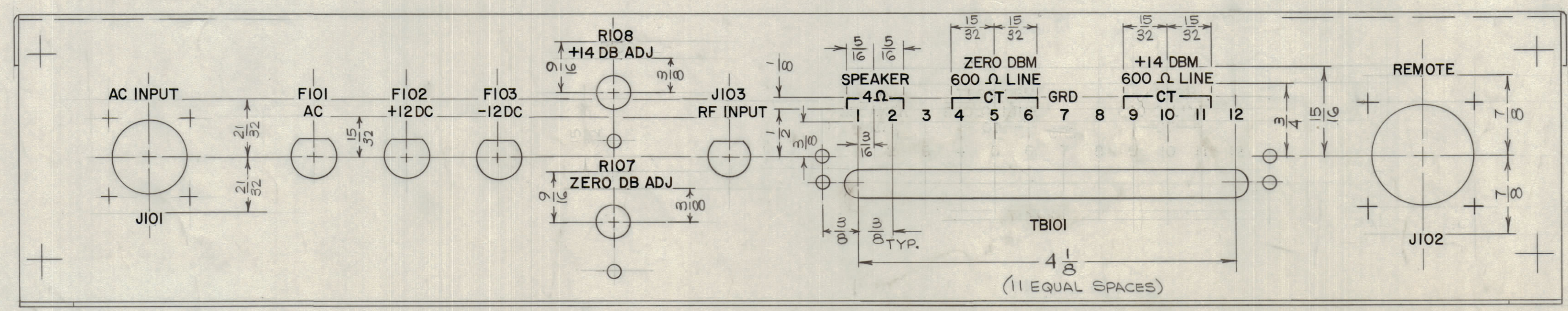


REVISIONS							
ZONE	SYM	DESCRIPTION	DATE	E.M.N. NO.	DRAFT	CHKD	APPD
	Ø	ORIGINAL RELEASE FOR PRODUCTION	8/19/65	Ø	PH		
	A	SEE SHEET 2	12/19/65	15411	HCA		
	B	SEE SHEET 2	2-9-66	15652	HCA		



MARKING PROCESS: AS PER TMC SPECIFICATION S-727.  
 LETTERING: 1/8 HIGH BLACK GOTHIC, LOCATED AS SHOWN.



LD1981  
SHEET 2  
B

REF: MS4718

REQ'D.	ITEM	PART NUMBER	DESCRIPTION	SYMBOL		
M. ZETENA LIST OF MATERIAL						
MATERIAL		THE TECHNICAL MATERIEL CORP. MAMARONECK, NEW YORK				
FINISH		MARKING, CHASSIS, ELEC, MAIN				
UNLESS OTHERWISE SPECIFIED DIMENSIONS ARE IN INCHES AND INCLUDE CHEMICALLY APPLIED OR PLATED FINISHES		DRAWN H. AUSTIN DATE 8-6-65 CHECKED [Signature] DATE 8/19/65 ELECT. DES. [Signature] DATE 8/19/65 MECH. DES. [Signature] DATE 8/19/65				
DECIMALS .X ± .05 .XX ± .01 .XXX ± .005		TOLERANCES ± 1/64 ANGLES ± 0° 30'		<table border="1"> <tr> <td>LD1981</td> <td>B</td> </tr> </table>	LD1981	B
LD1981	B					
SHEET 1 OF 2				REV. LTR.		

NOTES

Q'TY./UNIT	VLRE-1	MODEL USED ON	ASSY. NO.
SCALE	CODE		
1:1	A		

THE CONTENTS OF THIS DRAWING ARE THE EXCLUSIVE PROPERTY OF THE TECHNICAL MATERIEL CORP. ITS UNAUTHORIZED USE OR REPRODUCTION IN WHOLE OR IN PART IS STRICTLY FORBIDDEN.