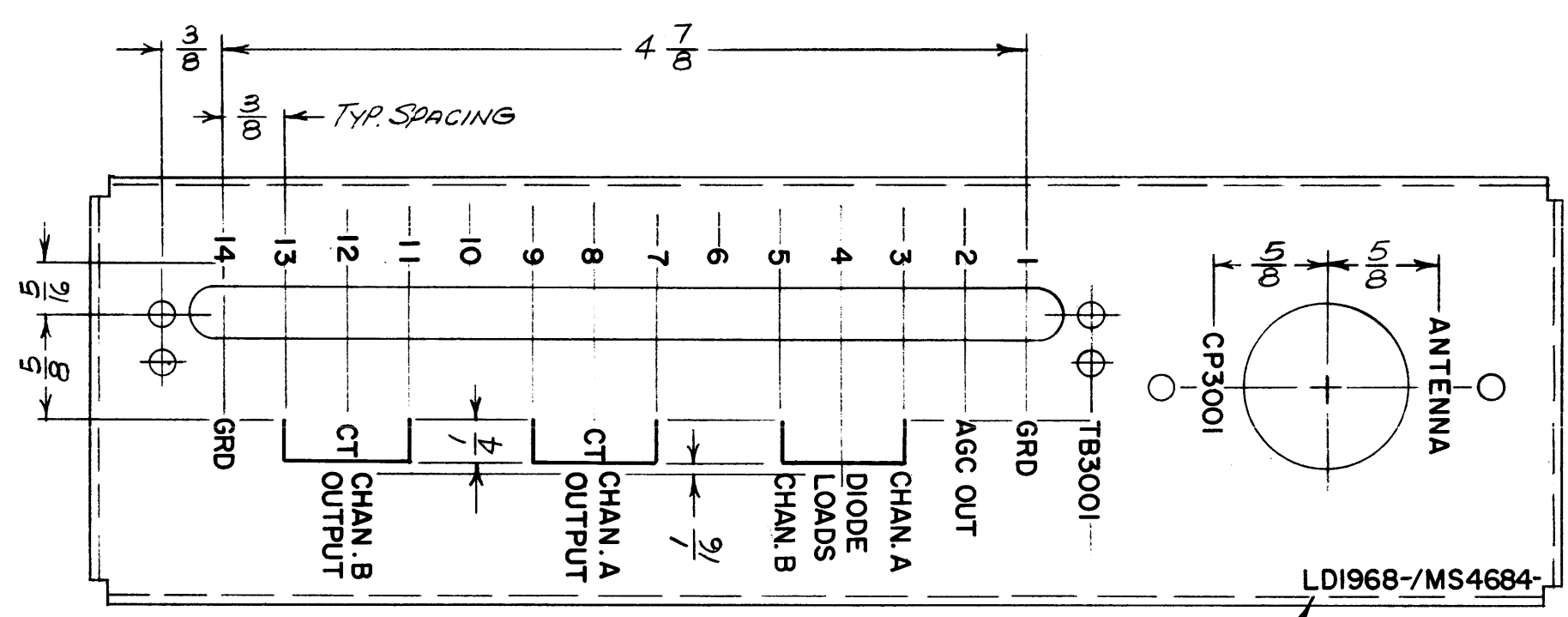


LD1968

REVISIONS					
SYM	DESCRIPTION	DATE	E.M.N. NO.	DRAFT	CHKD APPD
X1	ADDED "CHAN. A," "CHAN. B" TO DIODE LOADS	8.4.65	X1	HCA	
Ø	ORIGINAL RELEASE FOR PRODUCTION	8/9/65		HV	



LD1968-MS4684-
 MARK TMC PT. No.
 W/LATEST REV. LETTERS

MARKING PROCESS: AS PER TMC SPECIFICATION S-727.
 LETTERING: 1/8 HIGH BLACK GOTHIC, LOCATED AS SHOWN.
 LINES: .010 WIDE STROKE

REQ'D.	ITEM	PART NUMBER	DESCRIPTION	SYMBOL
EATON LIST OF MATERIAL				
MATERIAL		THE TECHNICAL MATERIEL CORP. MAMARONECK, NEW YORK		
FINISH		TITLE <i>MARKING, CHASSIS</i>		
UNLESS OTHERWISE SPECIFIED DIMENSIONS ARE IN INCHES AND INCLUDE CHEMICALLY APPLIED OR PLATED FINISHES		DRAWN <i>H. Austin</i>	DATE 7.21.65	FINAL APPROVAL <i>[Signature]</i>
		CHECKED <i>[Signature]</i>	DATE 7.21-65	DATE 8/9/65
DECIMALS .X ± .05 .XX ± .01 .XXX ± .005		FRACTIONS ± 1/64 ANGLES ± 0° 30'		DATE LD1968
TOLERANCES		MECH. DES. <i>[Signature]</i>		DATE
THE CONTENTS OF THIS DRAWING ARE THE EXCLUSIVE PROPERTY OF THE TECHNICAL MATERIEL CORP. ITS UNAUTHORIZED USE OR REPRODUCTION IN WHOLE OR IN PART IS STRICTLY FORBIDDEN.				REV. LTR. Ø
NOTES				SHEET

RAK-102-4	
Q'TY./UNIT	MODEL USED ON
SCALE 1:1	ASS'Y. NO.
CODE A	