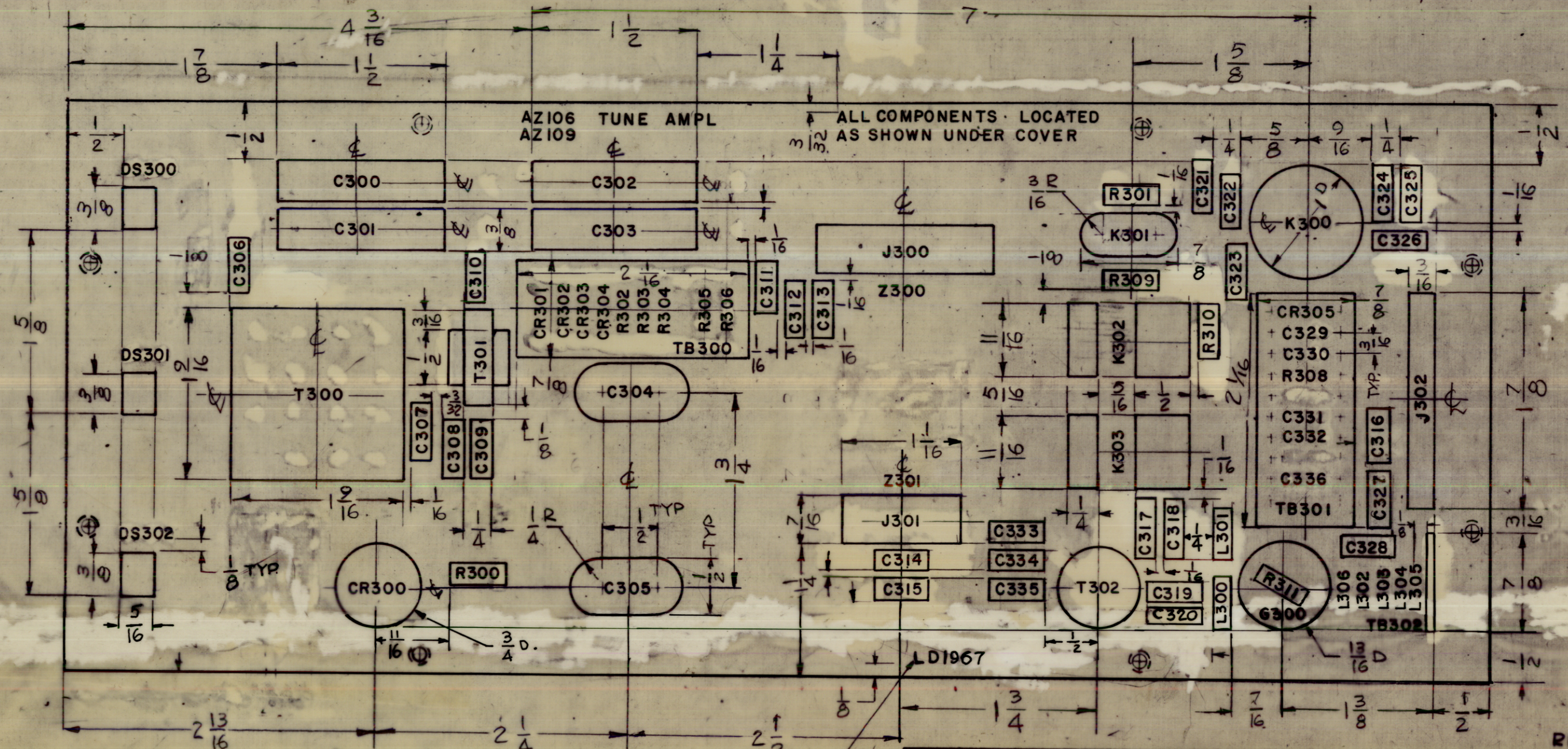


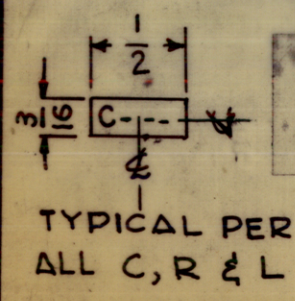
SYM	DESCRIPTION	DATE	EMN NO.	DRAFT	CHKD	APPD
Ø	ORIGINAL RELEASE FOR PRODUCTION	5-5-66	Ø	WPD		

SYM	DESCRIPTION	DATE	E.M.N. NO.	DRAFT	CHKD	APPD
X1	K 300 DELETED - K300 WAS K304	7-19-65	X1	G.D.L.		
X2	C333,34,35,36 & L306 ADDED - R301,309,310, C307,8,9 & C316 RELOCATED	7-20-65	X2	G.D.L.		



MARKING PROCESS: AS PER TMC SPECIFICATION S-727  
 LETTERING: 3/32 HIGH BLACK GOTHIC, LOCATED AS SHOWN.  
 LINES: WIDTH OF STROKE .015

MARK TMC P/NO WITH LATEST REV. LETTER



2	TST ( ) IOK	AZ106 - AZ109
QTY./UNIT	MODEL USED ON	ASS'Y. NO.
SCALE 1:1	CODE A	

THE CONTENTS OF THIS DRAWING ARE THE EXCLUSIVE PROPERTY OF THE TECHNICAL MATERIEL CORP. ITS UNAUTHORIZED USE OR REPRODUCTION IN WHOLE OR IN PART IS STRICTLY FORBIDDEN.

REQ'D.	ITEM	PART NUMBER	DESCRIPTION	SYMBOL
F. BUDETTI				
LIST OF MATERIAL				
MATERIAL				
THE TECHNICAL MATERIEL CORP. MAMARONECK, NEW YORK				
FINISH				
TITLE MARKING, COVER BOTTOM MODULE				
UNLESS OTHERWISE SPECIFIED DIMENSIONS ARE IN INCHES AND INCLUDE CHEMICALLY APPLIED OR PLATED FINISHES				
DRAWN G.D.L.		DATE 7-13-65	FINAL APPROVAL	
CHECKED		DATE	5/5/66	
ELECT. DES.		DATE 5-5-66	LD1967	
MECH. DES.		DATE	SHEET	
DECIMALS .X ± .05 .XX ± .01 .XXX ± .005		FRACTIONS ± 1/64 ANGLES ± 0° 30'		REV. LTR.
ML 752 W		5/5/66		

REF:MS 4294