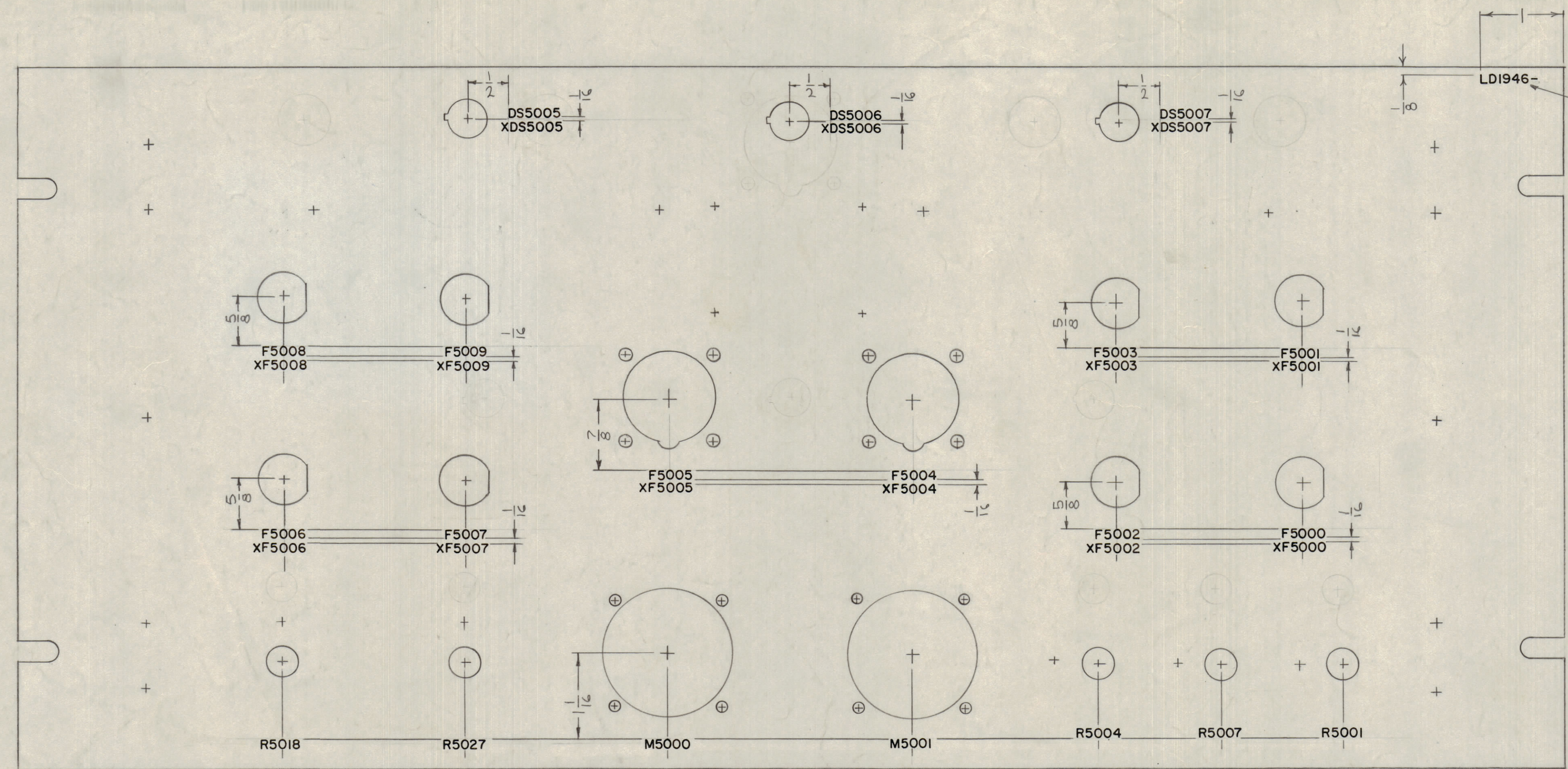


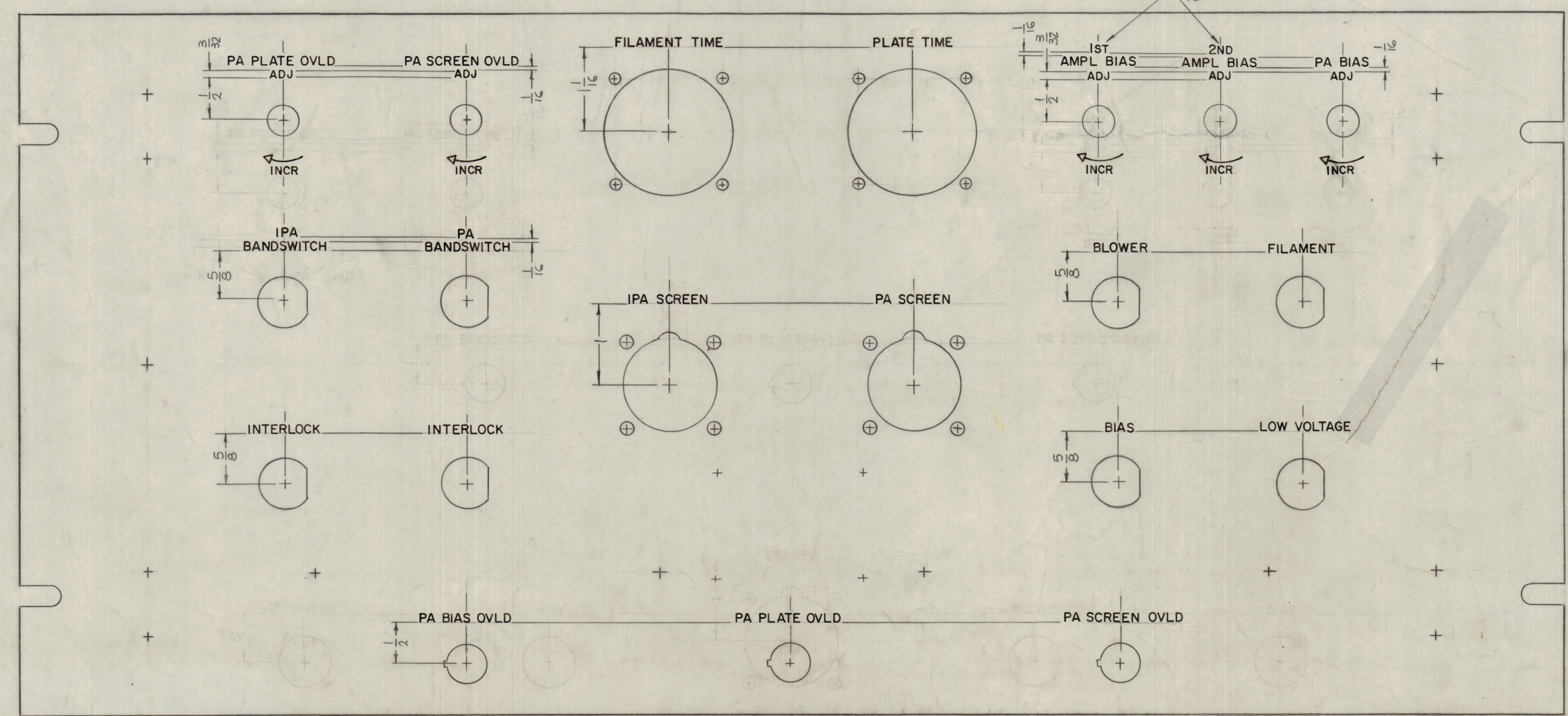
REVISIONS							
ZONE	SYM	DESCRIPTION	DATE	E.M.N. NO.	DRAFT	CHKD	APPD
	X1	COMPLETELY REVISED	4-12-64	X1			
	X2	PICTORIAL REVISED	5-31-64	X2			
	X3	ADDED HOLES SEE MS. DWG.	6-10-64	X3			
	Ø	ORIGINAL RELEASE FOR PRODUCTION	11-11-66				



MARK TMC PART NO.  
1/8 HIGH GOTHIC  
W/LATEST REV. LETTER.

MARKING PROCESS: AS PER TMC SPECIFICATION S-727.  
LETTERING: 1/8 HIGH BLACK GOTHIC, LOCATED AS SHOWN.

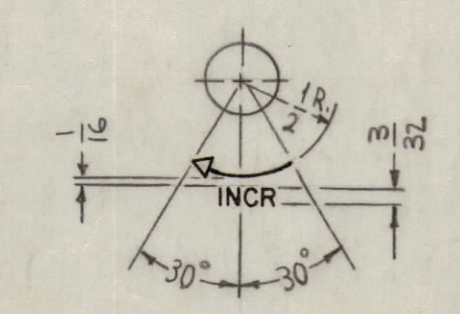
MARKING  
(REAR VIEW)



HEIGHT OF LETTER	DEPTH OF STROKE	WIDTH OF STROKE
3/32	.010	.015
1/8	.010	.020
LINES	.010	.015
ARROW HEADS	.010	SEE DETAIL

- UNLESS OTHERWISE SPECIFIED  
1~ ALL LETTERING 1/8 HIGH GOTHIC.  
2~ ALL LETTER GROUPS TO BE CENTERED ON HOLES.  
3~ ALL ENGRAVING TO BE WHITE FILLED.  
4~ ALL ARROWHEADS, WHITE OUTLINE FILL.

ENGRAVING  
(FRONT VIEW)



ARROW HEAD  
DETAIL  
(REQ.)

INCR - DETAIL  
(REQ.)

REF: MS4647

REQ'D.	ITEM	PART NUMBER	DESCRIPTION	SYMBOL
	F. BUDETTI		LIST OF MATERIAL	
MATERIAL				
FINISH				
TITLE: MARKING, PANEL, FRONT MARKING PROCESS: ENGRAVING				
DRAWN: <i>[Signature]</i>		DATE: 6-12-65		FINAL APPROVAL: <i>[Signature]</i>
CHECKED: <i>[Signature]</i>		DATE: 7-9-65		DATE: 11/10/66
ELECT. DES.:		DATE: 11-10-66		DATE: 11/10/66
MECH. DES.:		DATE: 11-10-66		DATE: 11/10/66
DECIMALS: .X ± .05 .XX ± .01 .XXX ± .005		FRACTIONS: ± 1/64 ANGLES: ± 0° 30'		TOLERANCES: ± 0.005
THE CONTENTS OF THIS DRAWING ARE THE EXCLUSIVE PROPERTY OF THE TECHNICAL MATERIEL CORP. ITS UNAUTHORIZED USE OR REPRODUCTION IN WHOLE OR IN PART IS STRICTLY FORBIDDEN.		UNLESS OTHERWISE SPECIFIED DIMENSIONS ARE IN INCHES AND INCLUDE CHEMICALLY APPLIED OR PLATED FINISHES		
SCALE: DO NOT SCALE		CODE: A		
MODEL USED ON: AR128		ASSY. NO.: A5257		
REV. LTR.		SHEET		

NOTES