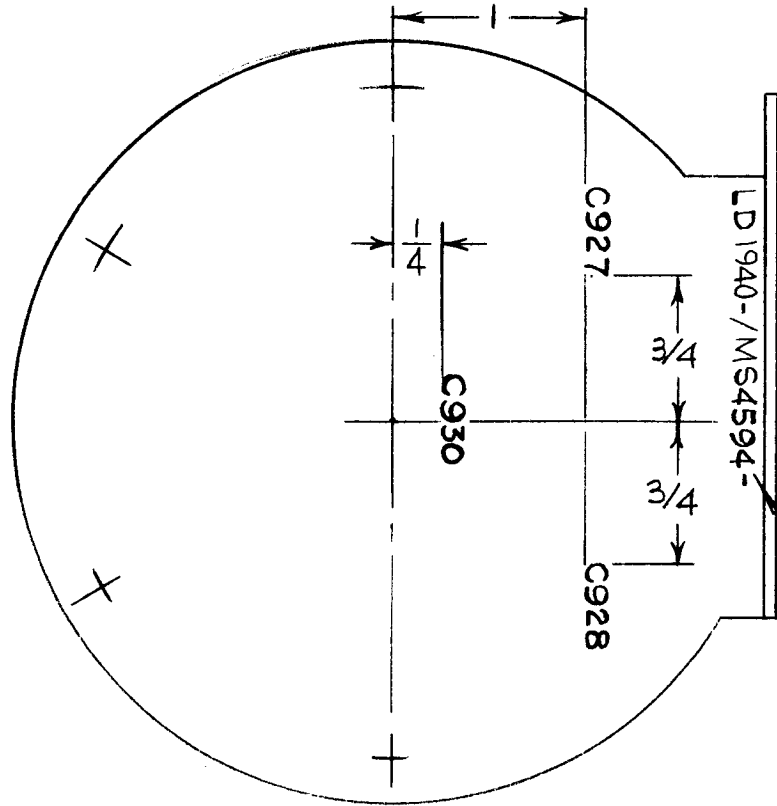


| | | | | |
|---------------|----------|------------|--------|--------------------|
| REQ. PER UNIT | USED ON | | | LD1940 \emptyset |
| | MODEL | ASS'Y. NO. | DATE | |
| 1 | TSTE-10K | | 6-8-65 | |



MARKING PROCESS: AS PER TMC SPECIFICATION S-727.
 LETTERING: 1/8 HIGH BLACK GOTHIC, LOCATED AS SHOWN.

MARK TMC PT. NO.
 W/LATEST REV. LETTERS

REF.: MS4594

| REQ. ITEM | PART NO. | DESCRIPTION | SYMBOL |
|---|---------------------------------|--|----------------------------------|
| | | THE TECHNICAL MATERIEL CORP. MAMARONECK. NEW YORK | |
| | | MARKING, BRACKET, CONNECTING | |
| \emptyset | ORIGINAL RELEASE FOR PRODUCTION | 5/3/67 | \emptyset CV <i>JCB</i> |
| SYM | DESCRIPTION | DATE | CH. NO. DRAFTS CHECKER ENG. APP. |
| UNLESS OTHERWISE SPECIFIED DIMENSIONS ARE IN INCHES AND INCLUDE CHEMICALLY APPLIED OR PLATED FINISHES | | SCALE | 1:1 |
| DECIMALS: .X \pm .05 .XX \pm .01 .XXX \pm .005 | TOLERANCES | FRACTIONS \pm 1/64 ANGLES \pm 0° 30' | CODE |
| | | | |
| | | HAUSTIN | JCB |
| | | DRAWN | CHECKED |
| | | 29 | <i>205/11/67</i> |
| | | | FINAL APPROVAL |
| | | | LD1940 \emptyset |
| | | | |