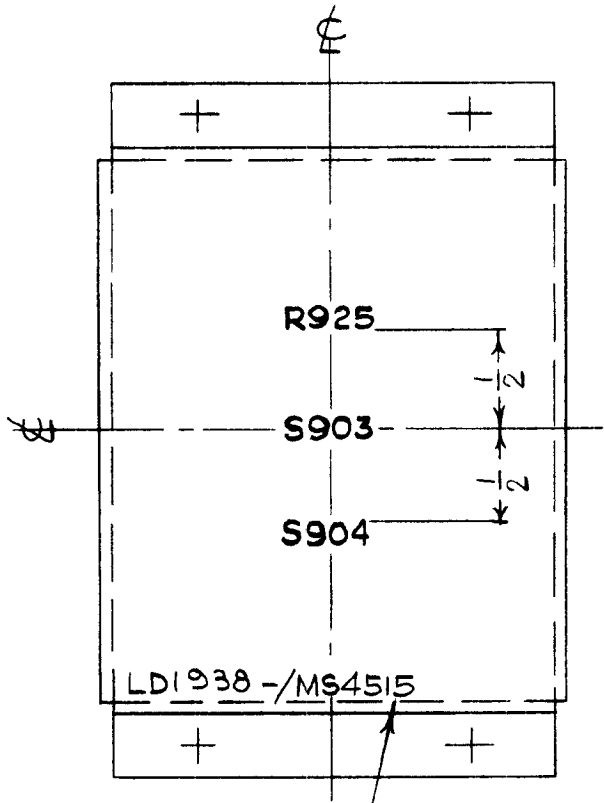


REQ. PER UNIT	USED ON			LD1938 Ø
	MODEL	ASS'Y. NO.	DATE	
1	TSTE-10K		6.8.65	




MARKING PROCESS: AS PER TMC SPECIFICATION S-727.

LETTERING: 1/8 HIGH BLACK GOTHIC, LOCATED AS SHOWN.

MARK TMC PT. NO.  
W/LATEST REV. LETTERS

REF.: MS4515

							REQ. ITEM	PART NO.	DESCRIPTION	SYMBOL
							STOCK SIZE		THE TECHNICAL MATERIEL CORP. MAMARONECK. NEW YORK	
							MATERIAL		MARKING, SHIELD, RF	
Ø	ORIG. RELEASE FOR PROD.	5.5.67	Ø	R.G.						
SYM	DESCRIPTION	DATE	CH. NO.	DRAFTS	CHECKER	ENG. APP.	MATERIAL			
UNLESS OTHERWISE SPECIFIED DIMENSIONS ARE IN INCHES AND INCLUDE CHEMICALLY APPLIED OR PLATED FINISHES		SCALE		1:1			HAUSTIN		 FINAL APPROVAL	
DECIMALS .X ± .05 .XX ± .01 .XXX ± .005		TOLERANCES		FRACTIONS ± 1/64 ANGLES ± 0° 30'			TYPE & TEMPER HEAT TREAT. SPEC.		DRAWN	CHECKED
		CODE					FINISH & SPEC. NO.		ELEC. DES. APP.	MECH. DES. APP.
									LD1938	Ø