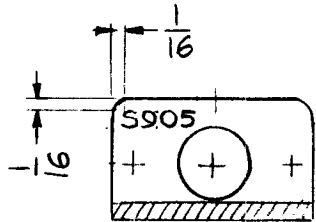
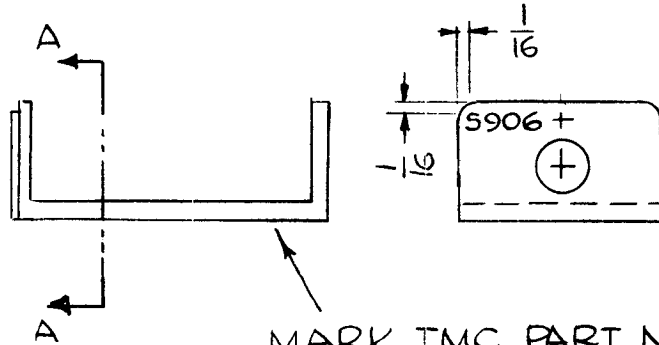


REQ. PER UNIT	USED ON			LD1935 Ø
	MODEL	ASS'Y. NO.	DATE	
1	TSTE-10K		6-8-65	



SECTION A-A



MARK TMC PART NO. (LD1935-) W/LATEST REVISION LETTER.

MARKING PROCESS: AS PER TMC SPECIFICATION S-727.

LETTERING: 3/32 HIGH BLACK GOTHIC, LOCATED AS SHOWN.

REF: PM1218

REQ.	ITEM	PART NO.					DESCRIPTION			SYMBOL	
							THE TECHNICAL MATERIEL CORP. MAMARONECK, NEW YORK				
		STOCK SIZE					MARKING, HOUSING, SWITCH				
Ø	ORIGINAL RELEASE FOR PRODUCTION	6.7.66	#	WTV							
SYM	DESCRIPTION	DATE	CH. NO.	DRAFTS	CHECKER	ENG. APP.	MATERIAL				
UNLESS OTHERWISE SPECIFIED DIMENSIONS ARE IN INCHES AND INCLUDE CHEMICALLY APPLIED OR PLATED FINISHES		SCALE		1:1			G.D.L.	CB	P.R. [Signature]		
							TYPE & TEMPER	HEAT TREAT. SPEC.	DRAWN	CHECKED	FINAL APPROVAL
DECIMALS .X ± .05 .XX ± .01 .XXX ± .005	TOLERANCES	FRACTIONS ± 1/64 ANGLES ± 0° 30'	CODE A				FINISH & SPEC. NO.		ELEC. DES. APP.	MECH. DES. APP.	LD1935 Ø