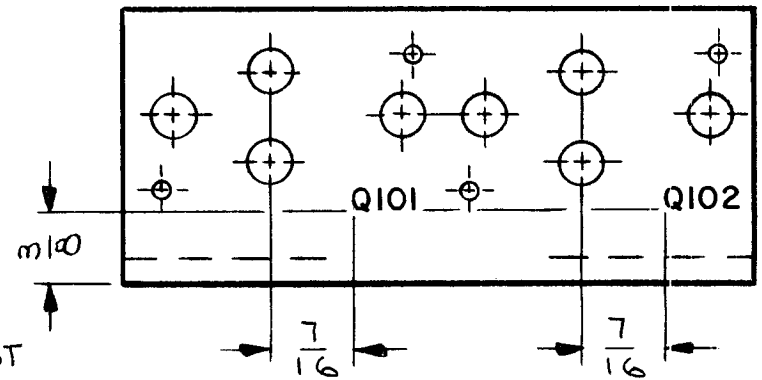
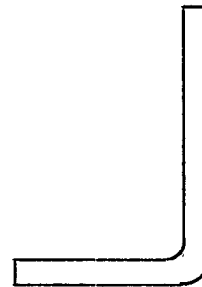
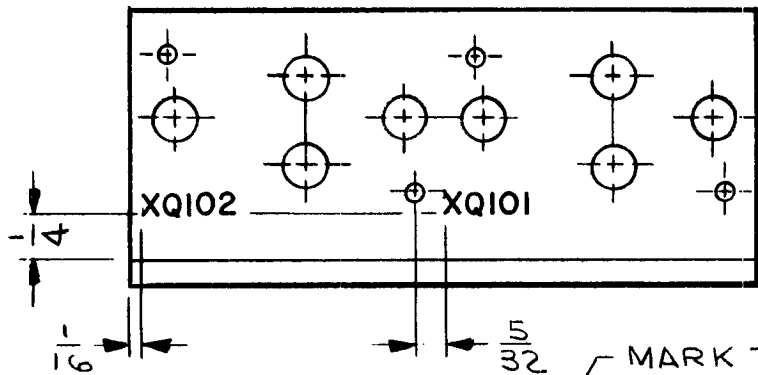
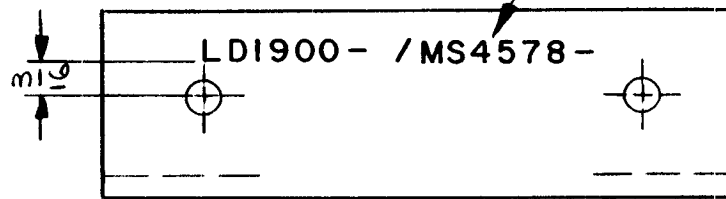


REQ. PER UNIT	USED ON			LD1900 $\emptyset$
	MODEL	ASS'Y. NO.	DATE	
1	RGC B-1		5/12/65	



MARK TMC PT. NO. W/LATEST REVISION LETTER



- UNLESS OTHERWISE SPECIFIED -

1-MARKING PROCESS: AS PER TMC SPECIFICATION S-727.

2-LETTERING: 1/8 HIGH BLACK GOTHIC, LOCATED AS SHOWN.

							REQ. ITEM	PART NO.	F. EATON	DESCRIPTION	SYMBOL
							//		THE TECHNICAL MATERIEL CORP. MAMARONECK. NEW YORK		
							STOCK SIZE		MARKING-BKT, MTG, HEAT SINK		
							//				
							MATERIAL				
$\emptyset$	ORIGINAL RELEASE FOR PRODUCTION	5/18/65	#	JL	J.M.		TYPE & TEMPER		LESHINSKI	<i>QCB</i>	<i>F. Eaton 5/18/65</i>
SYM	DESCRIPTION	DATE	CH. NO.	DRAFTS	CHECKER	ENG. APP.	HEAT TREAT. SPEC.		DRAWN	CHECKED	FINAL APPROVAL
UNLESS OTHERWISE SPECIFIED DIMENSIONS ARE IN INCHES AND INCLUDE CHEMICALLY APPLIED OR PLATED FINISHES		SCALE		1/1					<i>W. Jordan</i>	<i>5/14/65</i>	LD1900 $\emptyset$
DECIMALS .X $\pm$ .05 .XX $\pm$ .01 .XXX $\pm$ .005	TOLERANCES	FRACTIONS $\pm$ 1/64 ANGLES $\pm$ 0° 30'	CODE				FINISH & SPEC. NO.		ELEC. DES. APP.	MECH. DES. APP.	