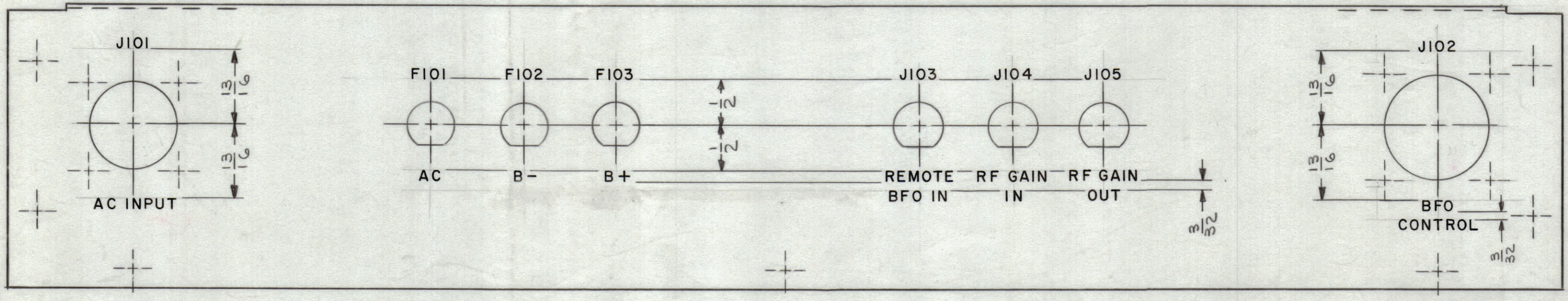
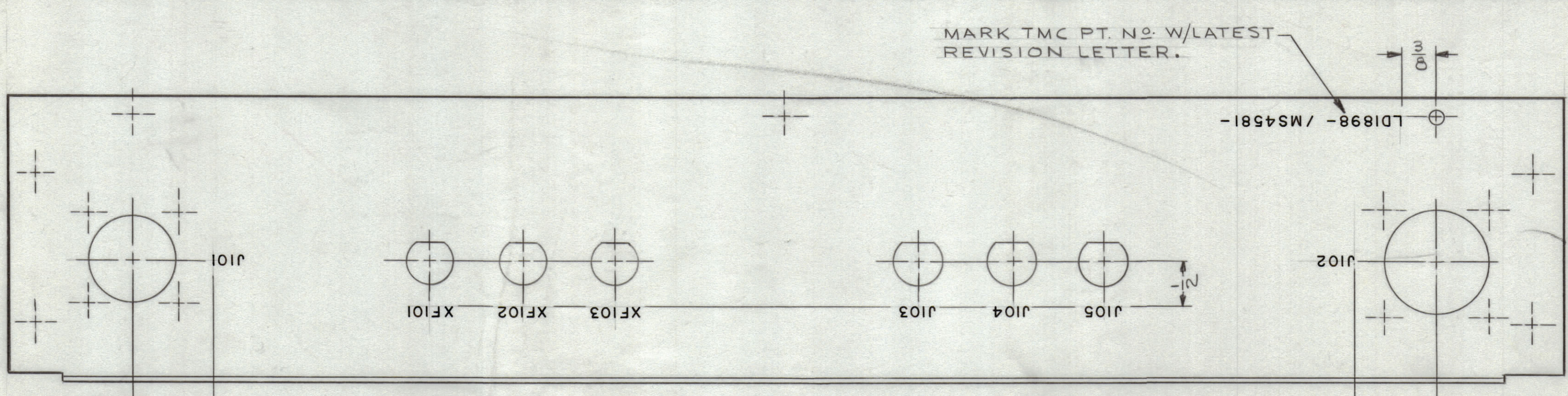


REVISIONS					
ZONE	SYM	DESCRIPTION	DATE	E.M.N. NO.	APPD
Ø		ORIGINAL RELEASE FOR PRODUCTION	5/18/65	—A—	JL J.M.



- EXTERIOR VIEW -



- INTERIOR VIEW -

- UNLESS OTHERWISE SPECIFIED -

- 1- MARKING PROCESS: AS PER TMC SPECIFICATION S-727.
- 2- LETTERING: 1/8 HIGH BLACK GOTHIC, LOCATED AS SHOWN.

NOTES

1	RGCB-1	
Q'TY./UNIT	MODEL USED ON	ASS'Y. NO.
SCALE 1/1	CODE A	
THE CONTENTS OF THIS DRAWING ARE THE EXCLUSIVE PROPERTY OF THE TECHNICAL MATERIEL CORP. ITS UNAUTHORIZED USE OR REPRODUCTION IN WHOLE OR IN PART IS STRICTLY FORBIDDEN.		

REF.: MS4581

REQ'D.	ITEM	PART NUMBER	DESCRIPTION	SYMBOL
LIST OF MATERIAL				
MATERIAL		THE TECHNICAL MATERIEL CORP. MAMARONECK, NEW YORK		
FINISH		TITLE MARKING - PLATE, REAR		
UNLESS OTHERWISE SPECIFIED DIMENSIONS ARE IN INCHES AND INCLUDE CHEMICALLY APPLIED OR PLATED FINISHES		DRAWN J. LESHINSKI CHECKED [Signature] ELECT. DES. [Signature] MECH. DES. W. JOHNSON	DATE 5/13/65 DATE 5/17/65 DATE 5/18/65 DATE 5/18/65	FINAL APPROVAL [Signature] DATE 5/18/65 SHEET 1
DECIMALS .X ± .05 .XX ± .01 .XXX ± .005	TOLERANCES	FRACTIONS ± 1/64 ANGLES ± 0° 30'	LD1898 Ø	
				REV. LTR.

LD1898 Ø