

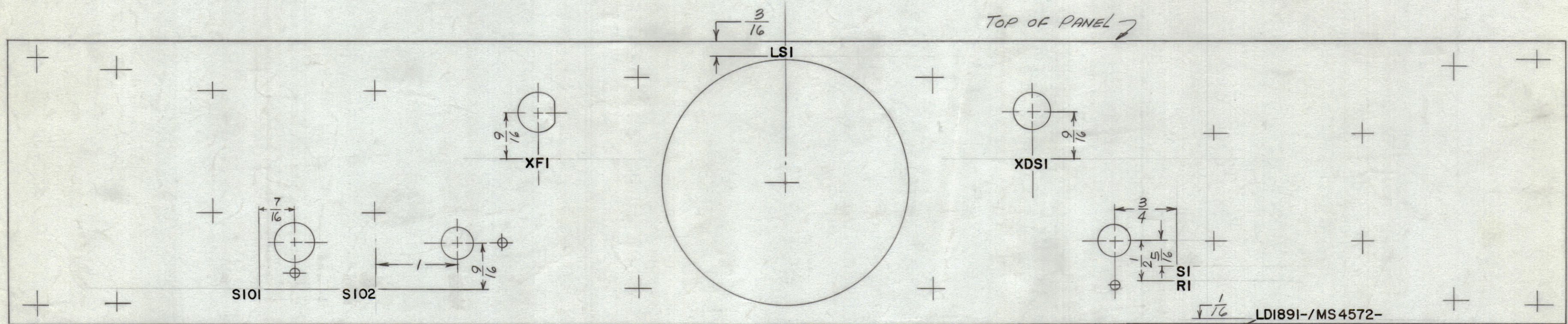
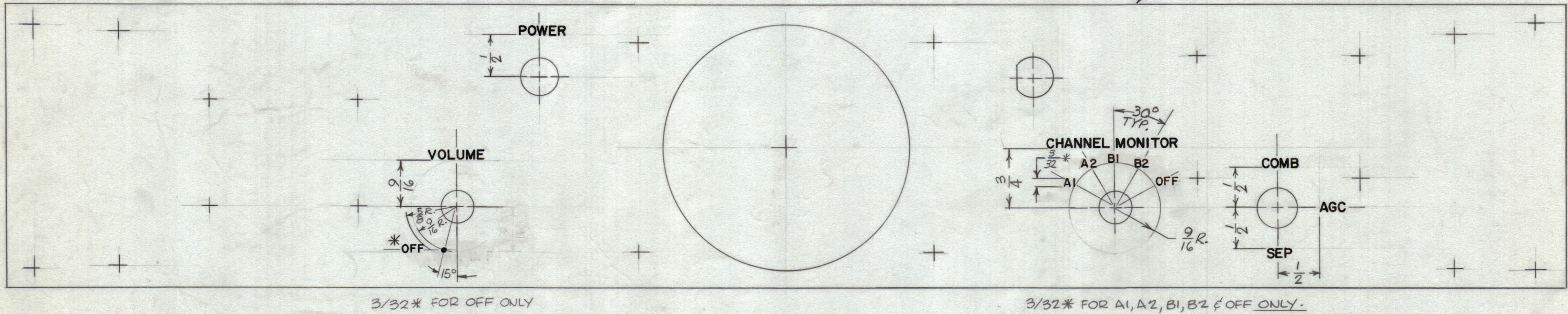
HEIGHT OF LETTERS	DEPTH OF STROKE	WIDTH OF STROKE
3/32	.010	.010
1/8	.010	.015
DOTS	.010	1/16 DIA.

NOTE: UNLESS OTHERWISE SPECIFIED

- 1- ALL ENGRAVING TO BE 1/8 HIGH GOTHIC WHITE FILLED.
- 2- ALL LETTER GROUPS TO BE CENTERED ON HOLES.
- 3- ENGRAVING AS PER TMC SPEC. S-566
- 4- ALL DOTS TO BE WHITE FILLED.

REVISIONS					
ZONE	SYM	DESCRIPTION	DATE	E.M.N. NO.	APPD
Ø		ORIGINAL RELEASE FOR PRODUCTION	5/6/65	AA	HCA

LD1891-1
ENGRAVING
FRONT VIEW



LD1891-2
MARKING
REAR VIEW

MARKING PROCESS: AS PER TMC SPECIFICATION S-727.
LETTERING: 1/8 HIGH BLACK GOTHIC, LOCATED AS SHOWN.

REF.: MS4572

REQ'D.	ITEM	PART NUMBER	DESCRIPTION	SYMBOL
POSE LIST OF MATERIAL				
MATERIAL			THE TECHNICAL MATERIEL CORP. MAMARONECK, NEW YORK	
FINISH			TITLE MARKING, PANEL, FRONT	
UNLESS OTHERWISE SPECIFIED DIMENSIONS ARE IN INCHES AND INCLUDE CHEMICALLY APPLIED OR PLATED FINISHES				
DRAWN H. AUSTIN		DATE 5-4-65		FINAL APPROVAL
CHECKED JCB		DATE 5/6/65		DATE 5/6/65
ELECT. DES.		DATE		LD1891
MECH. DES.		DATE		Ø
DECIMALS .X ± .05 .XX ± .01 .XXX ± .005		FRACTIONS ± 1/64 ANGLES ± 0° 30'		REV. LTR.

Q'TY./UNIT	MODEL USED ON	ASS'Y. NO.
1	HSS-8	
SCALE	CODE	
1:1		

NOTES

THE CONTENTS OF THIS DRAWING ARE THE EXCLUSIVE PROPERTY OF THE TECHNICAL MATERIEL CORP. ITS UNAUTHORIZED USE OR REPRODUCTION IN WHOLE OR IN PART IS STRICTLY FORBIDDEN.