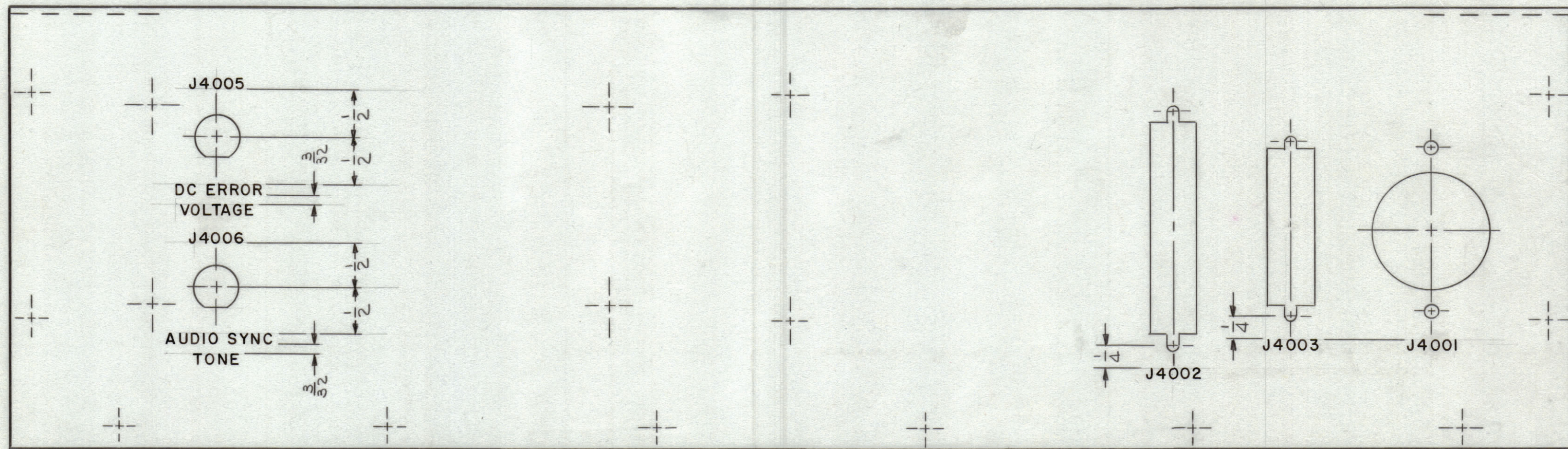
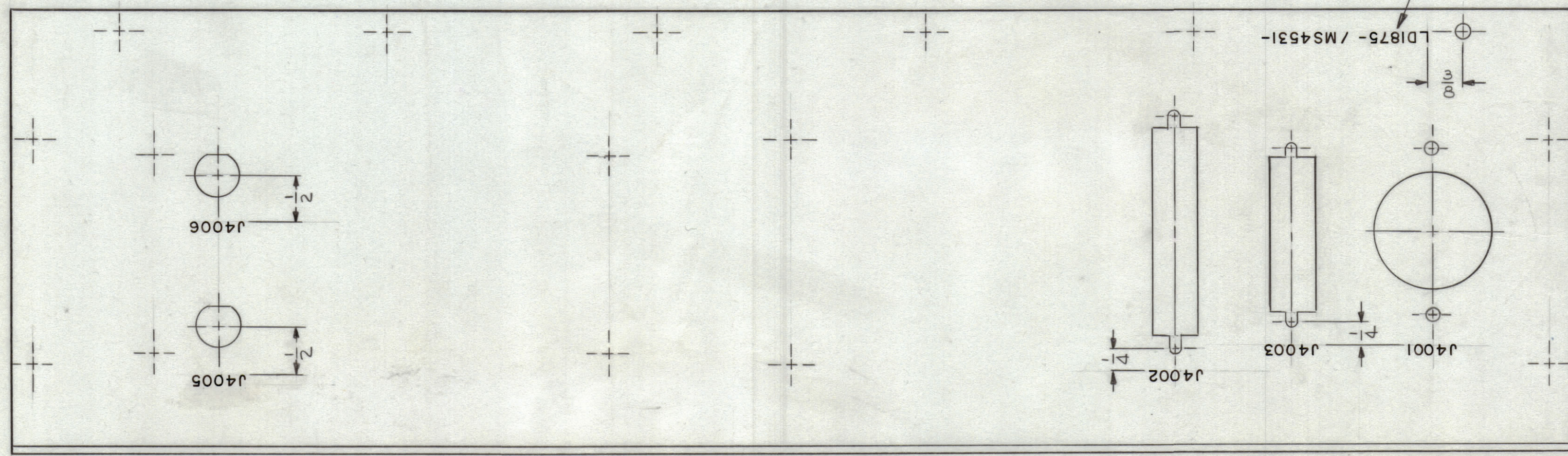


REVISIONS							
ZONE	SYM	DESCRIPTION	DATE	E.M.N. NO.	DRAFT	CHKD	APPD
	Ø	ORIG. RELEASE FOR PRODUCTION	4/30/65			JL	



- EXTERIOR VIEW -

MARK TMC PT. NO. W/LATEST REV. LETTER.



- INTERIOR VIEW -

REF.: MS4531

- UNLESS OTHERWISE SPECIFIED -

- 1-MARKING PROCESS: AS PER TMC SPECIFICATION S-727.
- 2-LETTERING: 1/8 HIGH BLACK GOTHIC, LOCATED AS SHOWN.

Q'TY./UNIT	MODEL USED ON	ASS'Y. NO.
1	LRCD-1	
1	LRCB-1	
SCALE	1/1	

THE CONTENTS OF THIS DRAWING ARE THE EXCLUSIVE PROPERTY OF THE TECHNICAL MATERIEL CORP. ITS UNAUTHORIZED USE OR REPRODUCTION IN WHOLE OR IN PART IS STRICTLY FORBIDDEN.

REQ'D.	ITEM	PART NUMBER	DESCRIPTION	SYMBOL
F. E. EATON LIST OF MATERIAL				
MATERIAL		THE TECHNICAL MATERIEL CORP. MAMARONECK, NEW YORK		
FINISH		TITLE MARKING - PLATE, REAR		
UNLESS OTHERWISE SPECIFIED DIMENSIONS ARE IN INCHES AND INCLUDE CHEMICALLY APPLIED OR PLATED FINISHES		DRAWN J. LESHINSKI	DATE 4/28/65	FINAL APPROVAL <i>[Signature]</i>
DECIMALS .X ± .05 .XX ± .01 .XXX ± .005		CHECKED <i>[Signature]</i>	DATE 4/29/65	DATE 4/30/65
FRACTIONS ± 1/64 ANGLES ± 0° 30'		ELECT. DES.	DATE	DATE
TOLERANCES		MECH. DES.	DATE	DATE
			DATE	DATE

NOTES

LD1875 Ø

LD1875 Ø