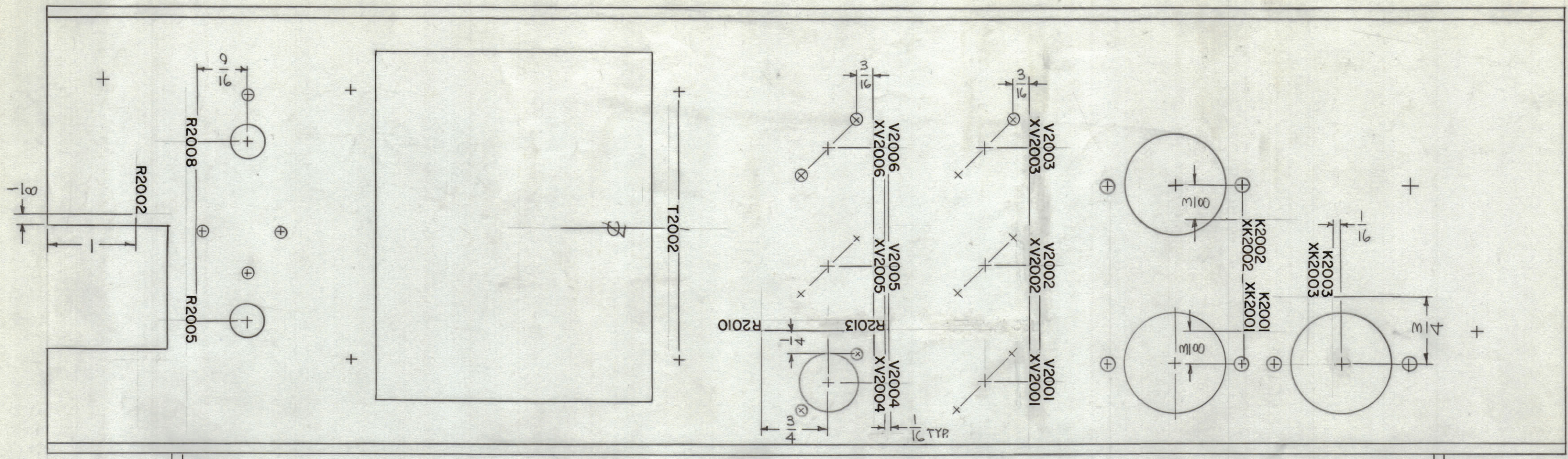
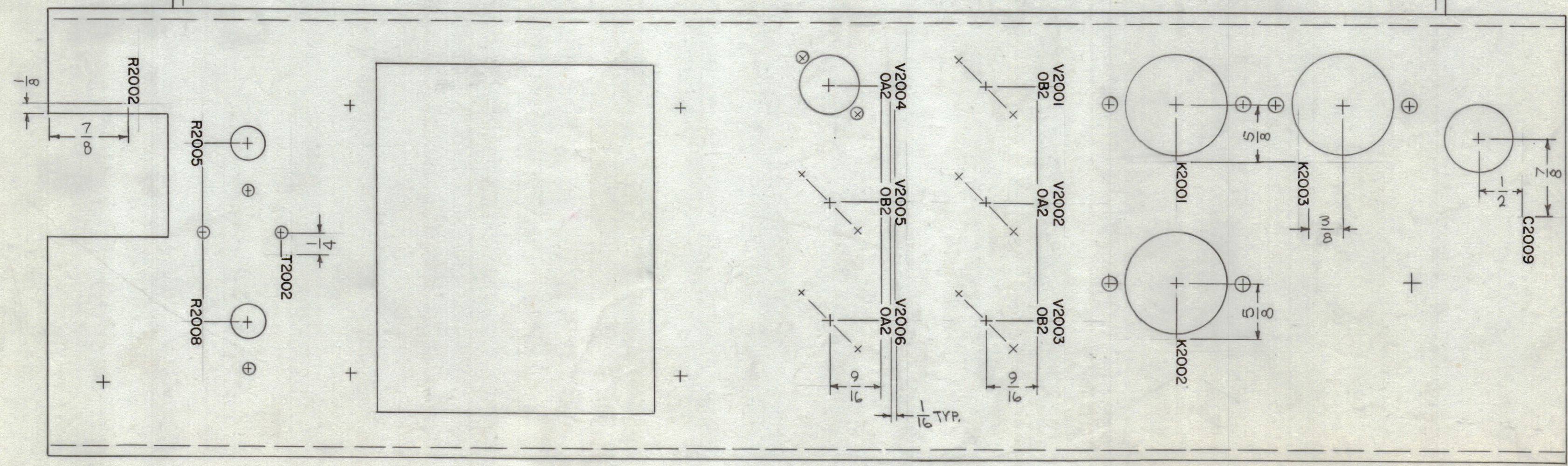


REVISIONS							
ZONE	SYM	DESCRIPTION	DATE	E.M.N. NO.	DRAFT	CHKD	APPD
X1		R2010 RE-LOCATED	8-3-65	X1	AKB		
Q		ORIGINAL RELEASE FOR PRODUCTION	8-25-64	Q	RME		



LD1869-MS4406-

STAMP TMC P/N.
1/8 HIGH GOTHIC
W/LATEST REV.
LETTER.



REF: MS 4406

MARKING PROCESS: AS PER TMC SPECIFICATION S-727.
LETTERING: 1/8 HIGH BLACK GOTHIC, LOCATED AS SHOWN.

NOTES

QTY./UNIT	TST()10K	AP126
SCALE	MODEL USED ON	ASS'Y. NO.
1:1	A	

THE CONTENTS OF THIS DRAWING ARE THE EXCLUSIVE PROPERTY OF THE TECHNICAL MATERIEL CORP. ITS UNAUTHORIZED USE OR REPRODUCTION IN WHOLE OR IN PART IS STRICTLY FORBIDDEN.

REQ'D.	ITEM	PART NUMBER	DESCRIPTION	SYMBOL
F. BUDETTI LIST OF MATERIAL				
MATERIAL		THE TECHNICAL MATERIEL CORP. MAMARONECK, NEW YORK		
FINISH		TITLE MARKING, CHASSIS RIGHT SIDE MARKING PROCESS: AS PER TMC SPEC. S727		
UNLESS OTHERWISE SPECIFIED DIMENSIONS ARE IN INCHES AND INCLUDE CHEMICALLY APPLIED OR PLATED FINISHES		DRAWN	DATE	FINAL APPROVAL
DECIMALS		SRG	4-23-65	AKB
FRACTIONS		CHECKED	DATE	DATE
TOLERANCES		HQA	8-24-65	8/25/65
X ± .05		ELECT. DES.	DATE	LD1869
.XX ± .01		MECH. DES.	DATE	Q
.XXX ± .005			DATE	
			SHEET	REV. LTR.

LD1869