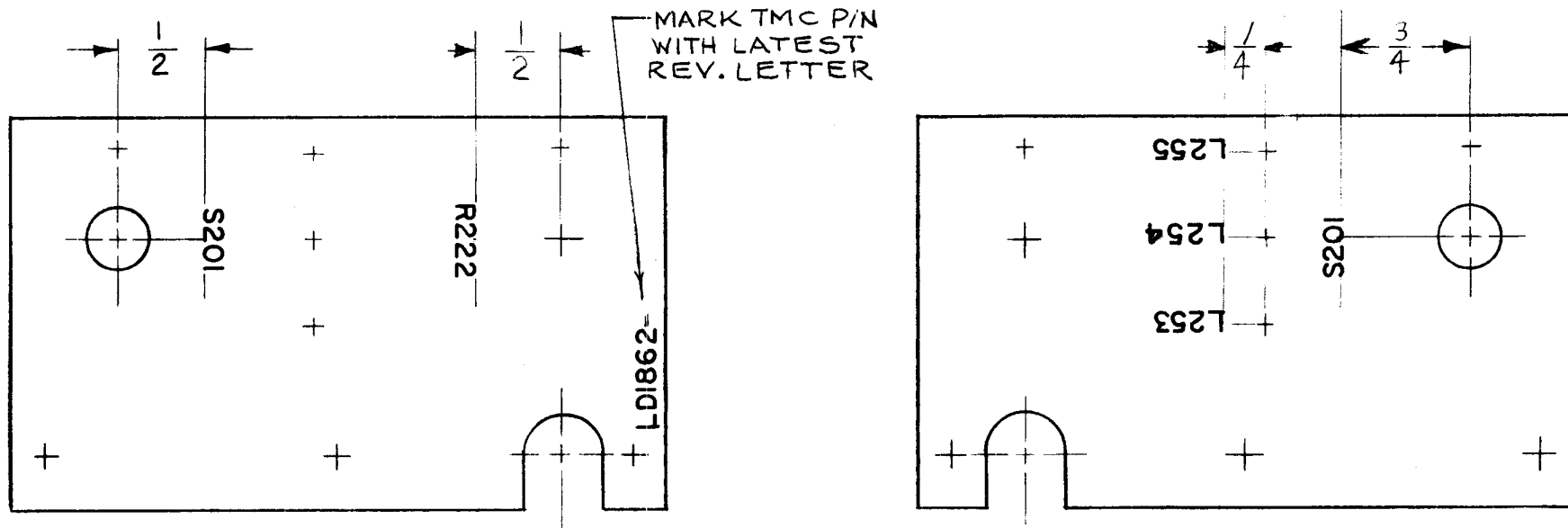


REQ. PER UNIT	USED ON			LD1862	Ø
	MODEL	ASS'Y. NO.	DATE		
1	RFTA-1		4-20-65		



MARKING PROCESS: AS PER TMC SPECIFICATION S-727.

LETTERING: 1/8 HIGH BLACK GOTHIC, LOCATED AS SHOWN.

REF: MS4374

REQ.	ITEM	PART NO.	F. BUDETTI DESCRIPTION				SYMBOL	
Ø	ORIGINAL RELEASE FOR PRODUCTION	6.7.66	#	WHD			THE TECHNICAL MATERIEL CORP. MAMARONECK. NEW YORK MARKING, PLATE, SWITCH MTG. MARKING PROCESS: TMC-S727	
X	EXP. RELEASE	5-11-65	X	LB				
SYM	DESCRIPTION	DATE	CH. NO.	DRAFTS	CHECKER	ENG. APP.		
UNLESS OTHERWISE SPECIFIED DIMENSIONS ARE IN INCHES AND INCLUDE CHEMICALLY APPLIED OR PLATED FINISHES		SCALE		1:1				
DECIMALS .X ± .05 .XX ± .01 .XXX ± .005		FRACTIONS ± 1/64 ANGLES ± 0° 30'		TOLERANCES		CODE A		
FINISH & SPEC. NO.		TYPE & TEMPER		HEAT TREAT. SPEC.		DRAWN		
FINISH & SPEC. NO.		TYPE & TEMPER		HEAT TREAT. SPEC.		CHECKED		
FINISH & SPEC. NO.		TYPE & TEMPER		HEAT TREAT. SPEC.		FINAL APPROVAL		
FINISH & SPEC. NO.		TYPE & TEMPER		HEAT TREAT. SPEC.		ELEC. DES. APP.		
FINISH & SPEC. NO.		TYPE & TEMPER		HEAT TREAT. SPEC.		MECH. DES. APP.		
FINISH & SPEC. NO.		TYPE & TEMPER		HEAT TREAT. SPEC.		LD1862 Ø		