

7

6

5

4

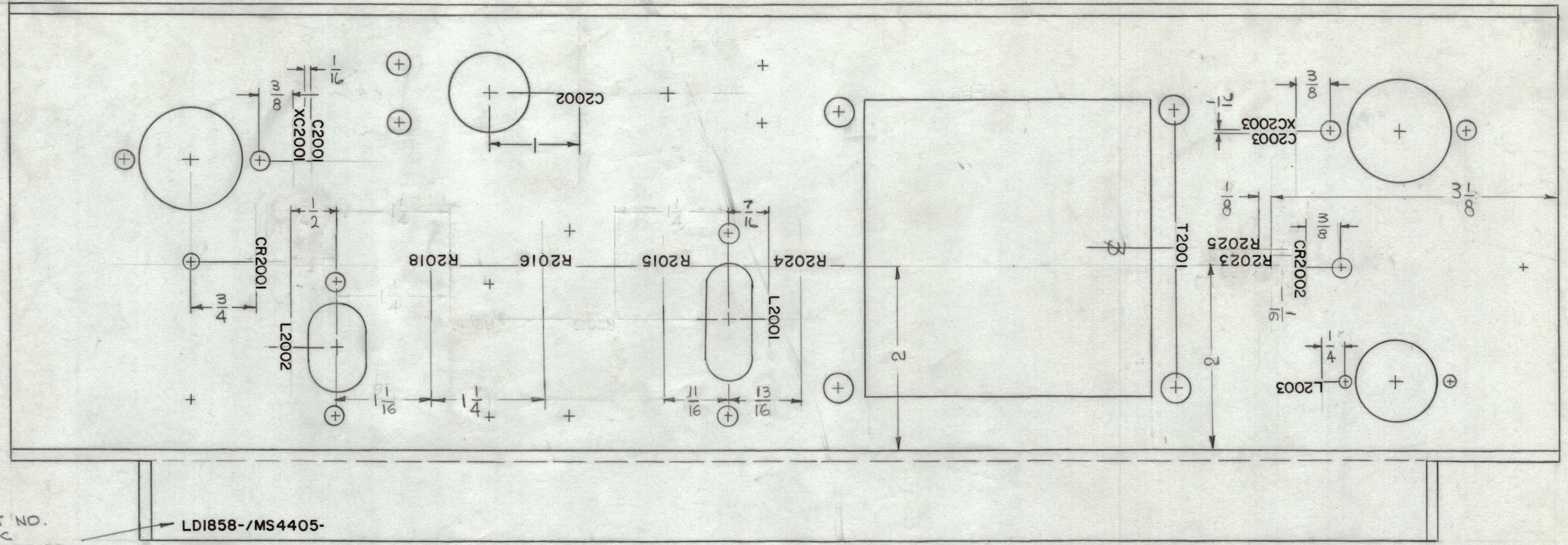
3

2

1

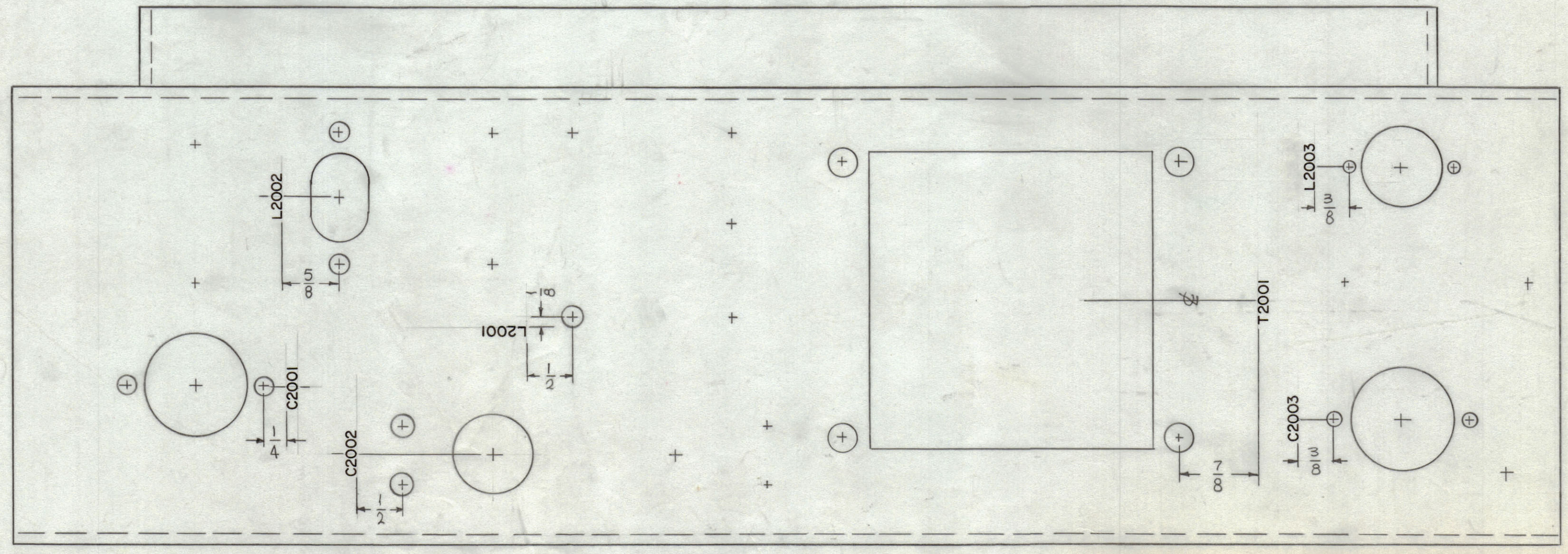
REVISIONS						
ZONE	SYM	DESCRIPTION	DATE	E.M.N. NO.	DRAFT	CHKD
	X1	R2015, R2016, R2018, R2023, 24 & 25 ADDED	7-15-65	X1	GDL	AK
	X2	R2016, R2015 DELETED	8-2-65	X2		
	Q	ORIGINAL RELEASE FOR PRODUCTION	8-25-66	Q	RME	

BOTTOM VIEW



MARK TMC PART NO.
1/8 HIGH GOTHIC
W/LATEST REV. LETTER.

LD1858-MS4405-



TOP VIEW

REF: MS 4405

MARKING PROCESS: AS PER TMC SPECIFICATION S-727.
LETTERING: 1/8 HIGH BLACK GOTHIC, LOCATED AS SHOWN.

NOTES

1	TST () 10K	AP.126
Q'TY./UNIT	MODEL USED ON	ASS'Y. NO.
SCALE 1:1	CODE A	

THE CONTENTS OF THIS DRAWING ARE THE EXCLUSIVE PROPERTY OF THE TECHNICAL MATERIEL CORP. ITS UNAUTHORIZED USE OR REPRODUCTION IN WHOLE OR IN PART IS STRICTLY FORBIDDEN.

REQ'D.	ITEM	PART NUMBER	DESCRIPTION	SYMBOL
F. BUDETTI LIST OF MATERIAL				
MATERIAL		THE TECHNICAL MATERIEL CORP. MAMARONECK, NEW YORK		
FINISH		TITLE MARKING, CHASSIS, LEFT SIDE MARKING PROCESS: AS PER TMC SPEC. S-727		
UNLESS OTHERWISE SPECIFIED DIMENSIONS ARE IN INCHES AND INCLUDE CHEMICALLY APPLIED OR PLATED FINISHES		DRAWN SRC	DATE 4-21-65	FINAL APPROVAL [Signature]
DECIMALS .X ± .05 .XX ± .01 .XXX ± .005		CHECKED [Signature]	DATE 8/24/66	DATE 8/25/66
FRACTIONS ± 1/64 ANGLES ± 0° 30'		ELECT. DES. [Signature]	DATE	DATE
TOLERANCES		MECH. DES. [Signature]	DATE	DATE
SHEET			LD1858	REV. LTR. Q-

LD1858
Q