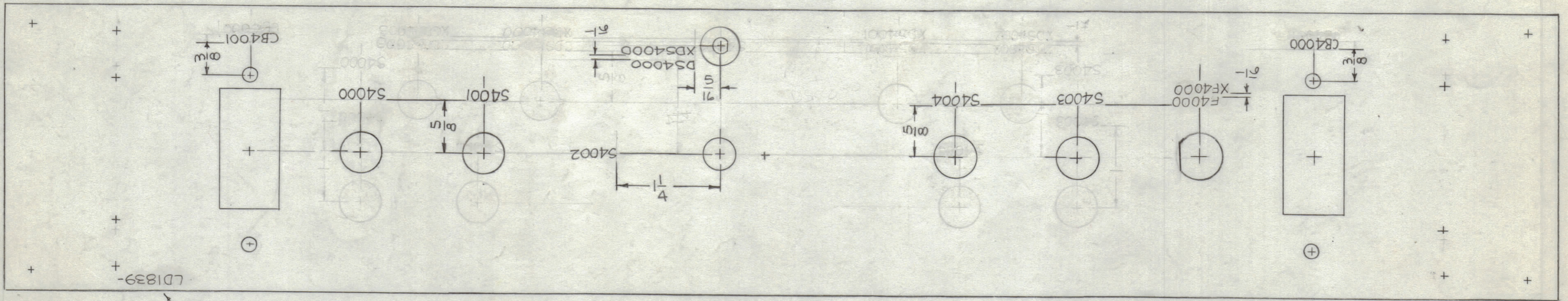


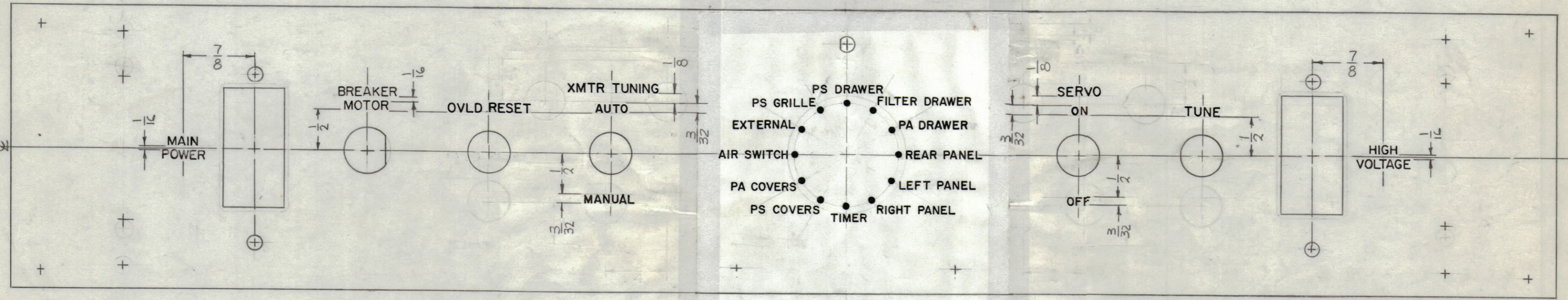
MARKING PROCESS: AS PER TMC SPECIFICATION S-727.
 LETTERING: 1/8 HIGH BLACK GOTHIC, LOCATED AS SHOWN.

MARKING
 REAR VIEW

REVISIONS						
ZONE	SYM	DESCRIPTION	DATE	E.M.N. NO.	DRAFT	CHKD
	X4	COMPLETELY REVISED & REDRAWN	3-28-66	X4		
	X5	REAR VIEW, MARKING REVERSED	4-29-66	X5		
	X6	COMPLETELY REVISED	6-16-66	X6		
	X7	DS 4000 ADDED ROTARY SWITCH REVISED	6-28-66	X7		
	X8	S4000 & S4003 MARKING RELOCATED	7-19-66	X7		
	Ø	ORIGINAL RELEASE FOR PRODUCTION	11-30-66	Ø		
	A	ON CHART, 3/32 WIDTH OF STROKE WAS ".020", 1/8 WAS ".015"	12-30-67	18561		FB



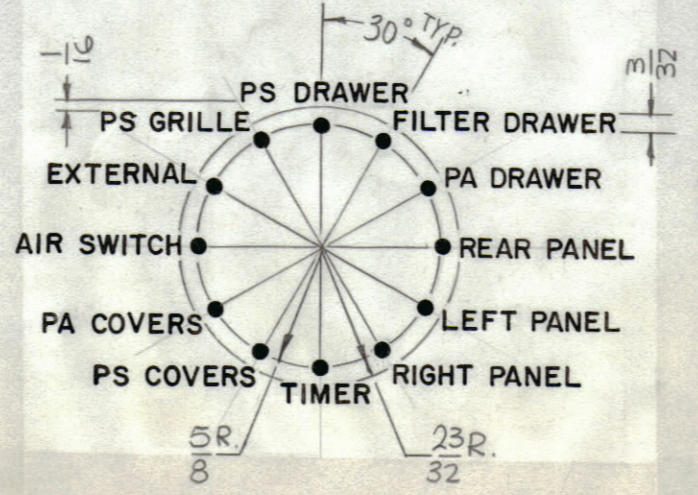
MARK TMC P/N
 1/8 HIGH GOTHIC
 W/LATEST REV.
 LETTER.



ENGRAVING
 FRONT VIEW

HEIGHT OF LETTERS	DEPTH OF STROKE	WIDTH OF STROKE
3/32	.010	.015
1/8	.010	.020
DOTS	.010	1/16 DIA.
LINE	.010	.015

UNLESS OTHERWISE SPECIFIED:
 1~ ALL ENGRAVING TO BE 1/8 HIGH GOTHIC.
 2~ ALL ENGRAVING TO BE WHITE FILLED.
 3~ ALL LETTER GROUPS TO BE CENTERED ON HOLES OR CUTOUTS.
 4~ ALL ENGRAVING PER TMC SPEC. 5566.



REF: MS 4486

REQ'D.	ITEM	PART NUMBER	DESCRIPTION	SYMBOL
F BUDETTI LIST OF MATERIAL				
MATERIAL		THE TECHNICAL MATERIEL CORP. MAMARONECK, NEW YORK		
FINISH		TITLE MARKING, PANEL FRONT MARKING PROCESS: ENGRAVING		
UNLESS OTHERWISE SPECIFIED DIMENSIONS ARE IN INCHES AND INCLUDE CHEMICALLY APPLIED OR PLATED FINISHES		DRAWN	DATE	FINAL APPROVAL
DECIMALS .X ± .05		11-26-66	12/1/66	
FRACTIONS ± 1/64		CHECKED	DATE	
ANGLES ± 0° 30'		11-26-66	12-1-66	
TOLERANCES .XXX ± .005		ELECT. DES.	DATE	
		MECH. DES.	DATE	
		11-26-66	12-1-66	
SHEET				REV. LTR.
LD1839				A

QTY./UNIT	MODEL USED ON	ASSY. NO.
1	TCP-2	A5252
SCALE	CODE	
1:1	C	

NOTES

THE CONTENTS OF THIS DRAWING ARE THE EXCLUSIVE PROPERTY OF THE TECHNICAL MATERIEL CORP. ITS UNAUTHORIZED USE OR REPRODUCTION IN WHOLE OR IN PART IS STRICTLY FORBIDDEN.