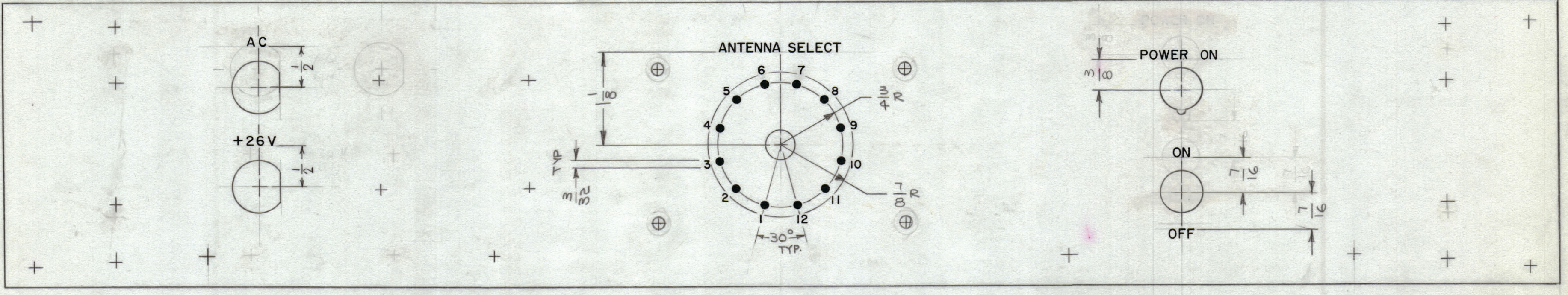


UNLESS OTHERWISE SPECIFIED
 1- ALL ENGRAVING TO BE 1/8 HIGH GOTHIC WHITE FILLED, SIZE SHOWN ON CHART.
 2- ALL DOTS TO BE WHITE FILLED
 3- ALL ENGRAVING TO BE CENTERED ON HOLES OR SLOTS
 4- ALL ENGRAVING AS PER TMC SPEC. 5566.

HEIGHT OF LETTERS	DEPTH OF STROKE	WIDTH OF STROKE
3/32	.010	.015
1/8	.010	.020
DOTS	.010	1/16 DIA.

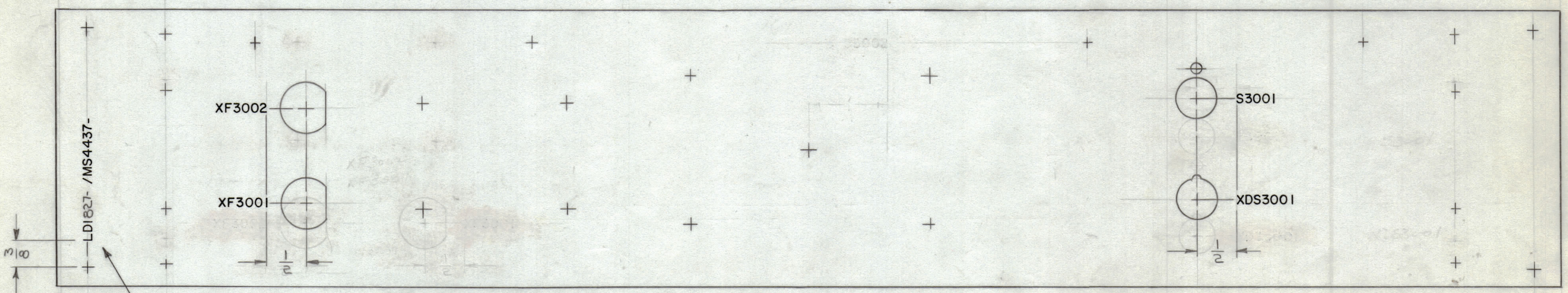
REVISIONS						
ZONE	SYM	DESCRIPTION	DATE	E.M.N. NO.	DRAFT	CHKD
	Ø	ORIGINAL RELEASE FOR PRODUCTION	5/25/65	-A-	WJ	

- TOP -
 - FRONT VIEW -



LD1827

- TOP -
 - REAR VIEW -



- MARK TMC P/N, WITH LATEST REVISION LETTERS

REF: MS4437

MARKING PROCESS: AS PER TMC SPECIFICATION S-727.
 LETTERING: 1/8 HIGH BLACK GOTHIC, LOCATED AS SHOWN.

NOTES

1	RCSA-1	
Q'TY./UNIT	MODEL USED ON	ASS'Y. NO.
SCALE 1:1	CODE A	

REQ'D.	ITEM	PART NUMBER	DESCRIPTION	SYMBOL
F. EATON LIST OF MATERIAL FORMALLY E3162B-20				
MATERIAL		THE TECHNICAL MATERIEL CORP. MAMARONECK, NEW YORK		
FINISH		TITLE MARKING, PANEL, FRONT ENGRAVING & MARKING		
UNLESS OTHERWISE SPECIFIED DIMENSIONS ARE IN INCHES AND INCLUDE CHEMICALLY APPLIED OR PLATED FINISHES		DRAWN W. JORDAN	DATE 3-5-65	FINAL APPROVAL DATE 5/25/65
DECIMALS .X ± .05 .XX ± .01 .XXX ± .005		FRACTIONS ± 1/64 ANGLES ± 0° 30'		DATE 5/25/65
TOLERANCES		ELECT. DES. MECH. DES. W. JORDAN		
		DATE 5/25/65		
		SHEET		

LD1827