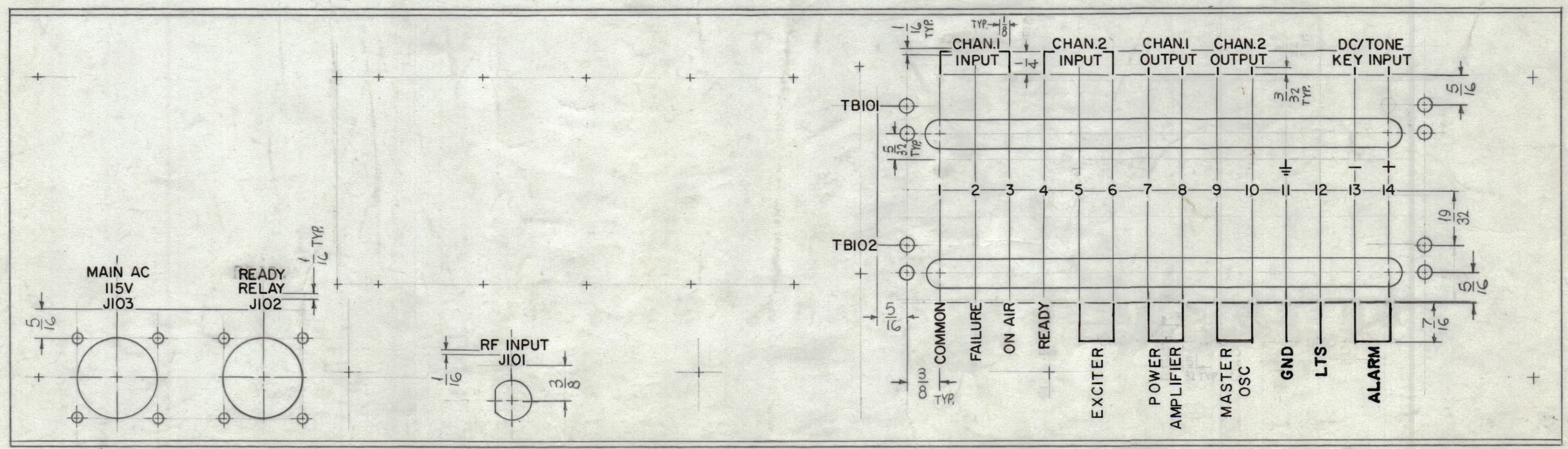
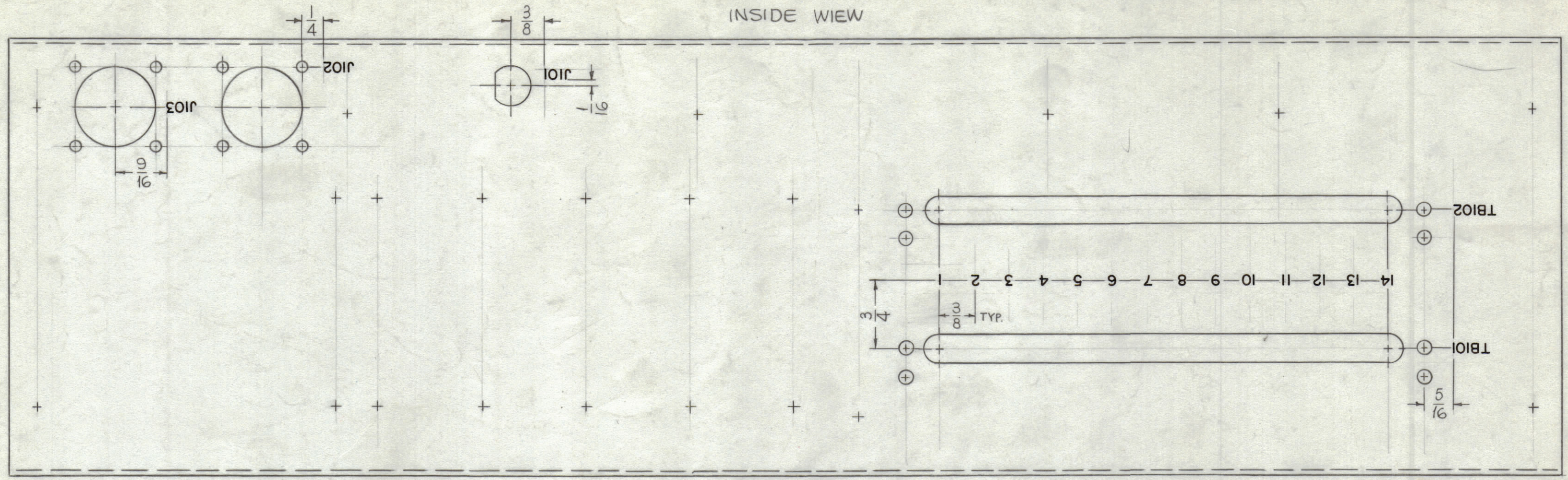


REVISIONS							
ZONE	SYM	DESCRIPTION	DATE	E.M.N. NO.	DRAFT	CHKD	APPD
X1		DWG WAS LD1638	3-19-65	X	SRG		
		ORIGINAL RELEASE FOR PRODUCTION	3-31-65		SRG		
A		CHG. RFC-1, CM O-1, REL OC; GND, ALARM, LTS, ADDED.	5-6-65	17909	JH	90/5	90/5
B		READY RELAYS WERE STBY, GND ON TERM 1 & 2	6/3/65	14179	E	90/5	90/5
C		CHG. LETTERING TO: EXCITER, POWER AMP & MASTER OSC	6-22-71	20390	RF		RF



MARK TMC PART NO.  
LD1819-MS4231- 1/8 HIGH  
GOTHIC W/LATEST REV.  
LETTER (ON LIP)

MARKING PROCESS: AS PER TMC SPECIFICATION S-727.  
LETTERING: 1/8 HIGH BLACK GOTHIC, LOCATED AS SHOWN.  
SYMBOLS - APPROX. SIZE SHOWN.

NOTES

1	KMCU-1	
Q'TY./UNIT	MODEL USED ON	ASS'Y. NO.
SCALE 1:1	CODE A	
THE CONTENTS OF THIS DRAWING ARE THE EXCLUSIVE PROPERTY OF THE TECHNICAL MATERIEL CORP. ITS UNAUTHORIZED USE OR REPRODUCTION IN WHOLE OR IN PART IS STRICTLY FORBIDDEN.		

REF: MS 4231-

REQ'D.	ITEM	PART NUMBER	DESCRIPTION	SYMBOL
F. BUDETTI LIST OF MATERIAL				
MATERIAL			THE TECHNICAL MATERIEL CORP. MAMARONECK, NEW YORK	
FINISH			TITLE MARKING, PLATE, REAR MARKING PROCESS: AS PER TMC SPEC. S-727	
UNLESS OTHERWISE SPECIFIED DIMENSIONS ARE IN INCHES AND INCLUDE CHEMICALLY APPLIED OR PLATED FINISHES		DRAWN SRG	DATE 3-11-65	FINAL APPROVAL
DECIMALS X ± .05 XX ± .01 .XXX ± .005		CHECKED JS	DATE 3-31-65	DATE
TOLERANCES ± 1/64 ANGLES ± 0° 30'		ELECT. DES. JHD	DATE	DATE
		MECH. DES.	DATE	DATE
			SHEET	REV. LTR.

LD1819

B

A