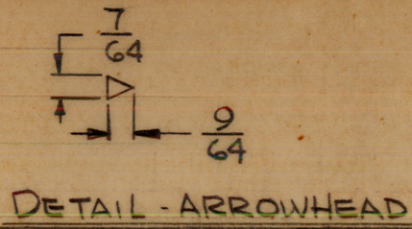
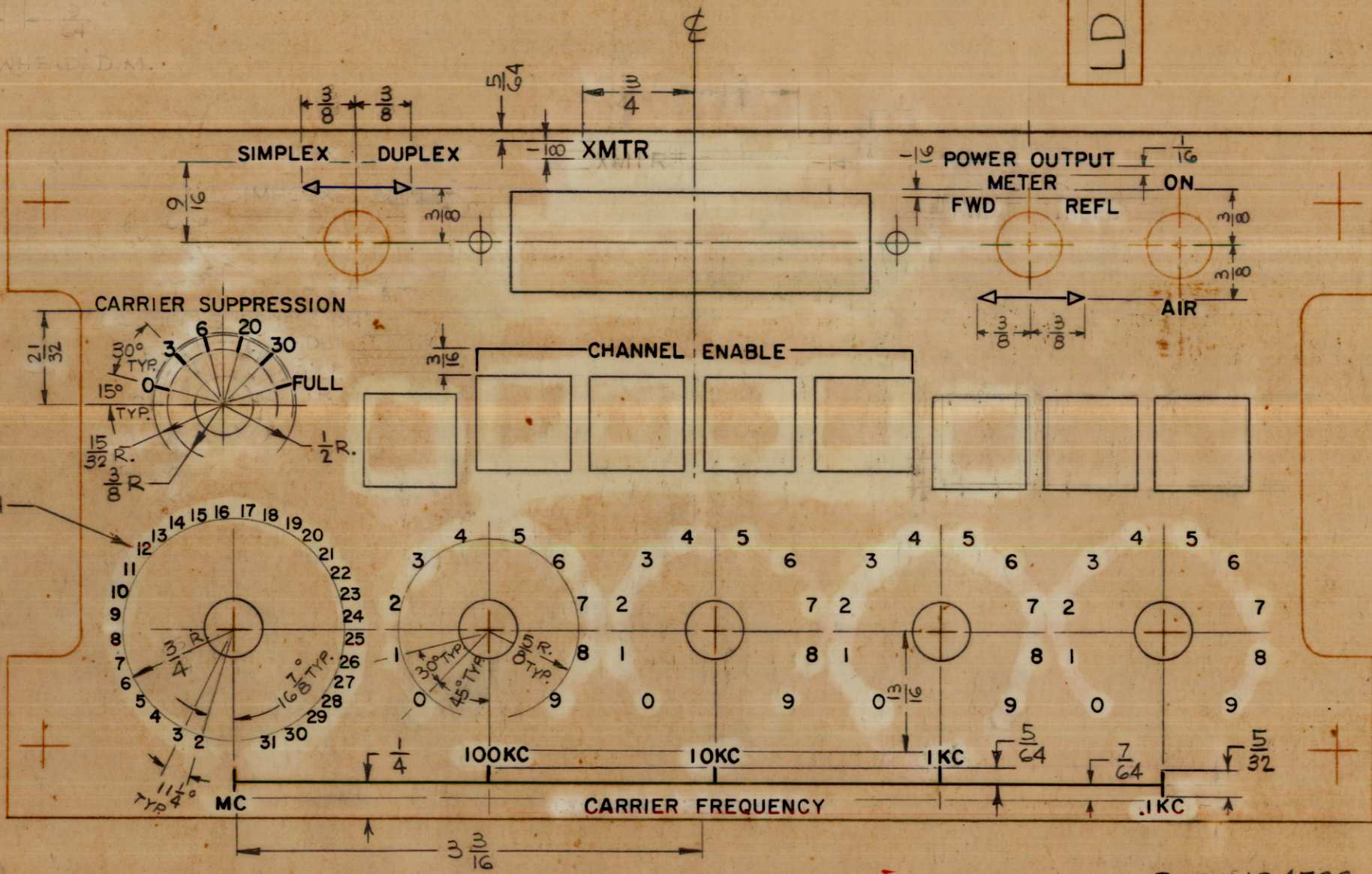


HEIGHT OF LETTERS	DEPTH OF STROKE	WIDTH OF STROKE
3/32	.010	.015
1/8	.010	.020
LINES	.010	.015
ARROWHEADS	.010	
5/64	.010	.015



LD1810

REVISIONS						
SYM	DESCRIPTION	DATE	E.M.N. NO.	DRAFT	CHKD	APPD
Ø	ORIGINAL RELEASE FOR PRODUCTION	4-21-65		HCLA		



- NOTE**
1. ALL LETTERING TO BE 3/32 HIGH GOTHIC WHITE FILLED, UNLESS OTHERWISE SPECIFIED.
 2. ALL LINES TO BE WHITE FILLED.
 3. ALL ARROWHEADS TO BE WHITE OUTLINE FILL.
 4. ENGRAVING PROCESS AS PER TMC SPEC. S-566
 5. 1/16 SPACING BETWEEN LETTER GROUPS.
 6. ALL LETTER GROUPS TO BE CENTERED ON HOLES.

MARK TMC PART NO. LD1810 / MS4522
 W/ LATEST REV. LETTER ON REAR OF PANEL
 LETTERING TO BE 1/8 HIGH GOTHIC
 WHITE AS PER TMC SPEC. S-727

REF: MS4522

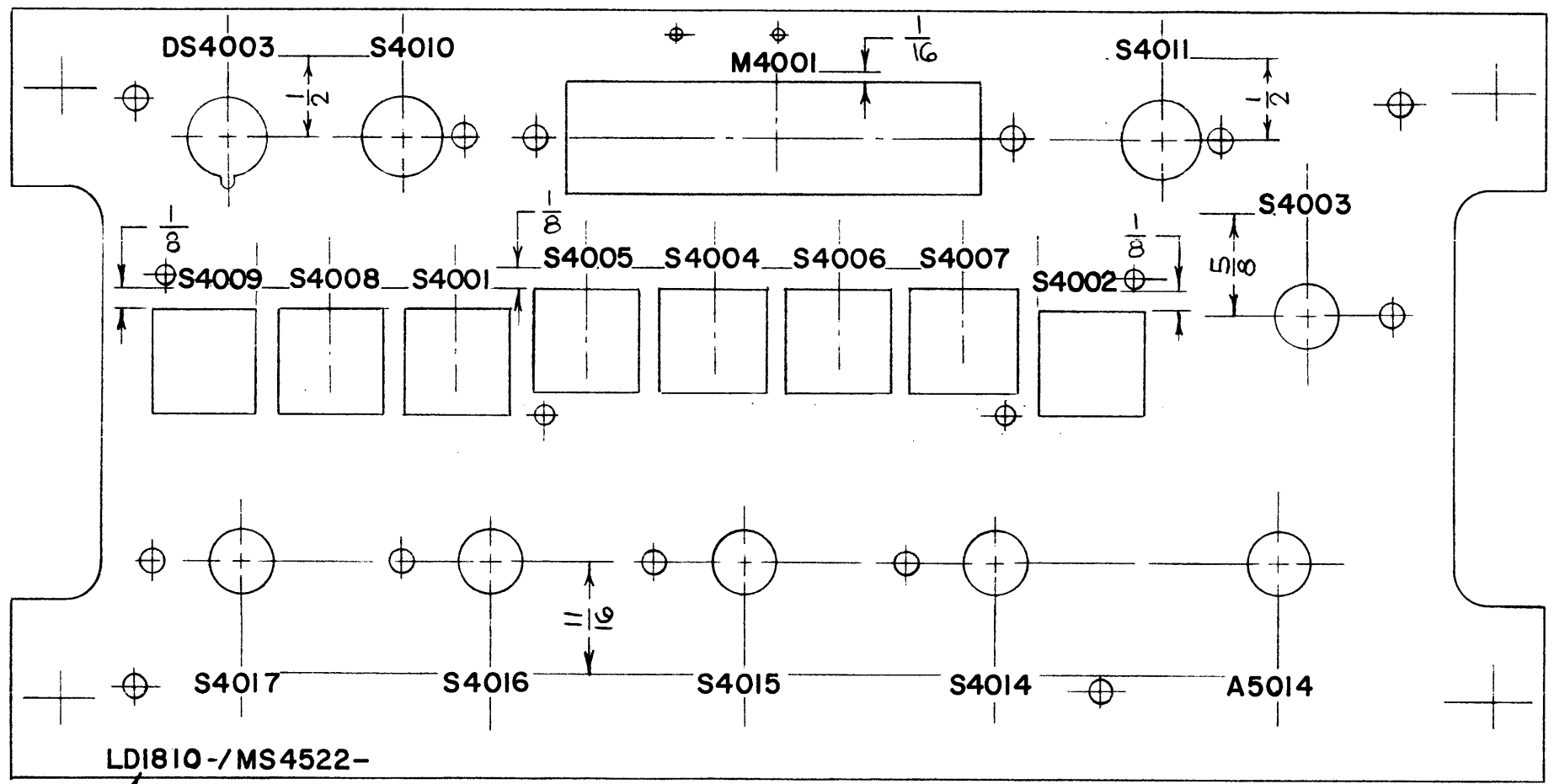
REQ'D.	ITEM	PART NUMBER	DESCRIPTION	SYMBOL
M. ZETENA LIST OF MATERIAL				
MATERIAL		THE TECHNICAL MATERIEL CORP. MAMARONECK, NEW YORK.		
FINISH		TITLE MARKING, PANEL, FRONT, TRANSMITTER		
UNLESS OTHERWISE SPECIFIED DIMENSIONS ARE IN INCHES AND INCLUDE CHEMICALLY APPLIED OR PLATED FINISHES		DRAWN H. AUSTIN	DATE 3-10-65	FINAL APPROVAL <i>H. E. Costa</i>
DECIMALS .X ± .05 .XX ± .01 .XXX ± .005		CHECKED <i>JCK</i>	DATE 4/22/65	DATE 4/23/65
TOLERANCES ± 1/64 ANGLES ± 0° 30'		ELECT. DES. <i>JCK</i>	DATE	DATE
		MECH. DES. <i>MFB</i>	DATE 4-22-65	DATE
SHEET 1 OF 2				REV. LTR. Ø

1	LRCM - 1	AX 568
Q'TY./UNIT	MODEL USED ON	ASS'Y. NO.
SCALE 1:1	CODE	
THE CONTENTS OF THIS DRAWING ARE THE EXCLUSIVE PROPERTY OF THE TECHNICAL MATERIEL CORP. ITS UNAUTHORIZED USE OR REPRODUCTION IN WHOLE OR IN PART IS STRICTLY FORBIDDEN.		

NOTES

LD1810

REVISIONS						
SYM	DESCRIPTION	DATE	E.M.N. NO.	DRAFT	CHKD	APPD
Ø	ORIGINAL RELEASE FOR PRODUCTION	4-21-65		HLA		



MARKING PROCESS: AS PER TMC SPECIFICATION S-727.
 LETTERING: 1/8 HIGH BLACK GOTHIC, LOCATED AS SHOWN.

LD1810-MS4522-
 MARK TMC PART NO.
 WITH LATEST REV. LETTER
 LOCATED AS SHOWN

REF.: MS4522

1	LRCM-1	AX568
Q'TY./UNIT	MODEL USED ON	ASS'Y. NO.
SCALE 1:1	CODE	

REQ'D.	ITEM	PART NUMBER	DESCRIPTION	SYMBOL
M. ZETENA LIST OF MATERIAL				
MATERIAL		THE TECHNICAL MATERIEL CORP. MAMARONECK, NEW YORK		
FINISH		TITLE MARKING, PANEL, FRONT, XMTR (INTERIOR)		
UNLESS OTHERWISE SPECIFIED DIMENSIONS ARE IN INCHES AND INCLUDE CHEMICALLY APPLIED OR PLATED FINISHES				
DRAWN H. AUSTIN		DATE 4-21-65	FINAL APPROVAL	
CHECKED		DATE 4/22/65	DATE 4/23/65	
ELECT. DES.		DATE	LD1810	
MECH. DES.		DATE 4-22-65	SHEET 2 OF 2	
DECIMALS .X ± .05 .XX ± .01 .XXX ± .005		FRACTIONS ± 1/64 ANGLES ± 0° 30'		REV. LTR. Ø

NOTES

THE CONTENTS OF THIS DRAWING ARE THE EXCLUSIVE PROPERTY OF THE TECHNICAL MATERIEL CORP. ITS UNAUTHORIZED USE OR REPRODUCTION IN WHOLE OR IN PART IS STRICTLY FORBIDDEN.