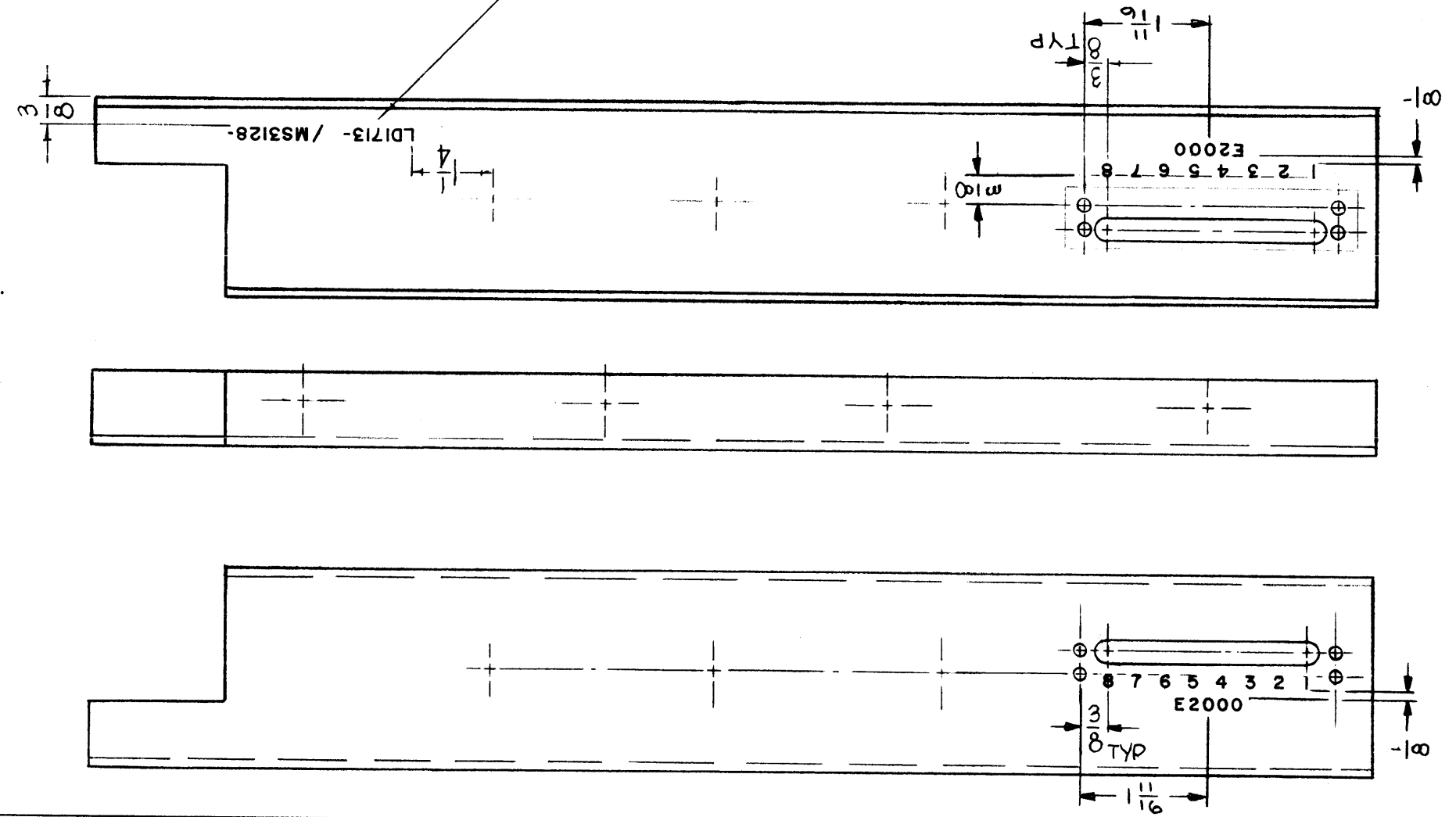


LD1713

| REVISIONS | | | | | | |
|----------------|------------------|----------|------------|-------|------|------|
| SYM | DESCRIPTION | DATE | E.M.N. NO. | DRAFT | CHKD | APPD |
| X ₁ | RELOCATED E2000 | 2/1/65 | | JL | | |
| ∅ | ORIGINAL RELEASE | 11-29-65 | ∅ | | fd | |

MARK TMC PART NO. 1/8 HIGH, BLACK GOTHIC WITH LATEST REVISION LETTERS



REF TMC DWG NO. MS3128

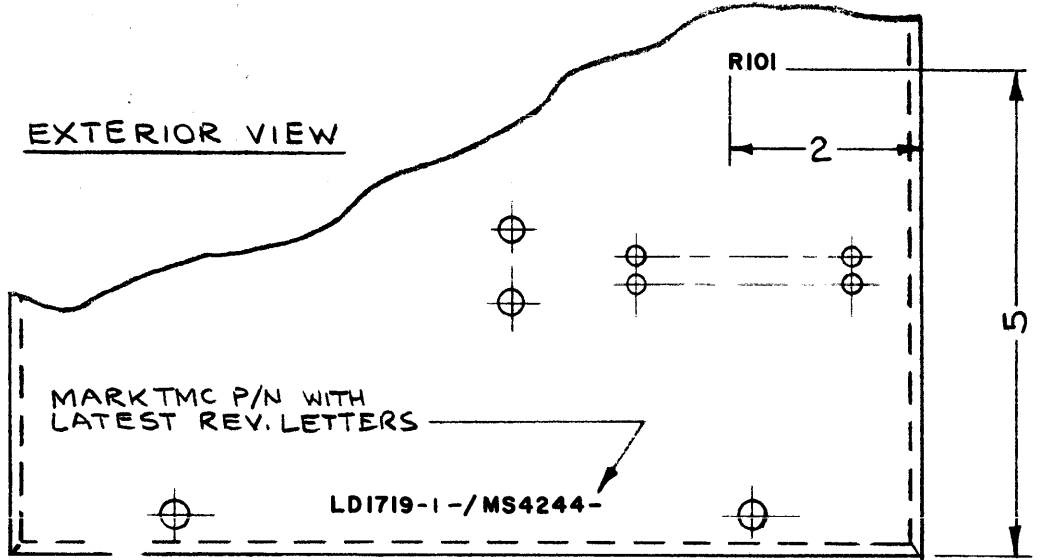
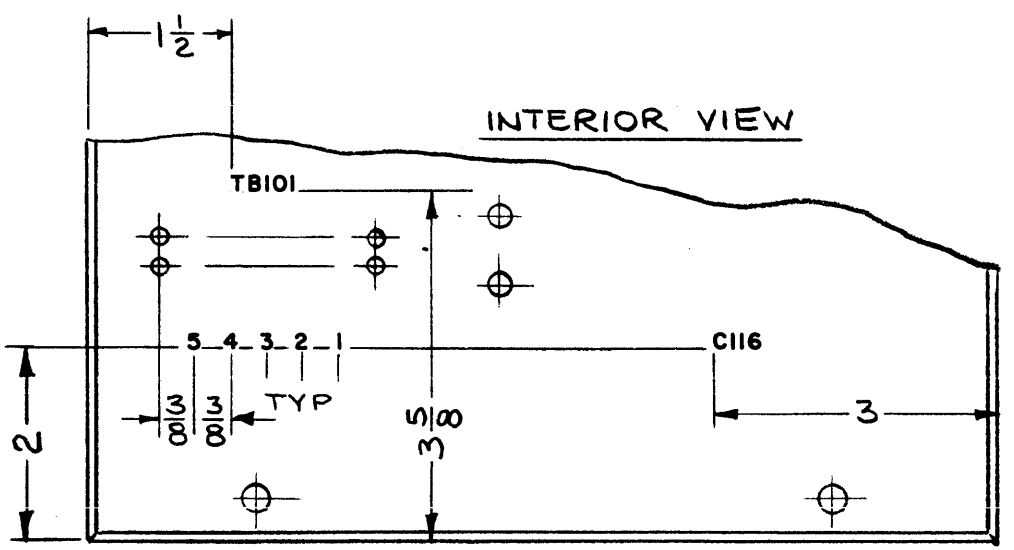
UNLESS OTHERWISE SPECIFIED:
 ALL MARKING AS PER TMC SPECIFICATION S727.
 ALL LETTERING 1/8 HIGH, BLACK GOTHIC.

| REQ'D. | ITEM | PART NUMBER | DESCRIPTION | SYMBOL |
|---|------|-------------|--|--|
| | | | | |
| BUDETTI LIST OF MATERIAL | | | | |
| MATERIAL | | | THE TECHNICAL MATERIEL CORP. MAMARONECK, NEW YORK | |
| FINISH | | | TITLE MARKING, CHASSIS DIVIDER (RT SIDE) | |
| UNLESS OTHERWISE SPECIFIED DIMENSIONS ARE IN INCHES AND INCLUDE CHEMICALLY APPLIED OR PLATED FINISHES | | | DRAWN John C Biele DATE 1-6-65 CHECKED JCB DATE 6-24-65 | FINAL APPROVAL DATE 11/21/65 |
| DECIMALS .X ± .05 .XX ± .01 .XXX ± .005 | | TOLERANCES | FRACTIONS ± 1/64 ANGLES ± 0° 30' | |
| ELECT. DES. | | | DATE | REV. LTR. |
| MECH. DES. | | | DATE | REV. LTR. |
| NOTES | | | SHEET | REV. LTR. |

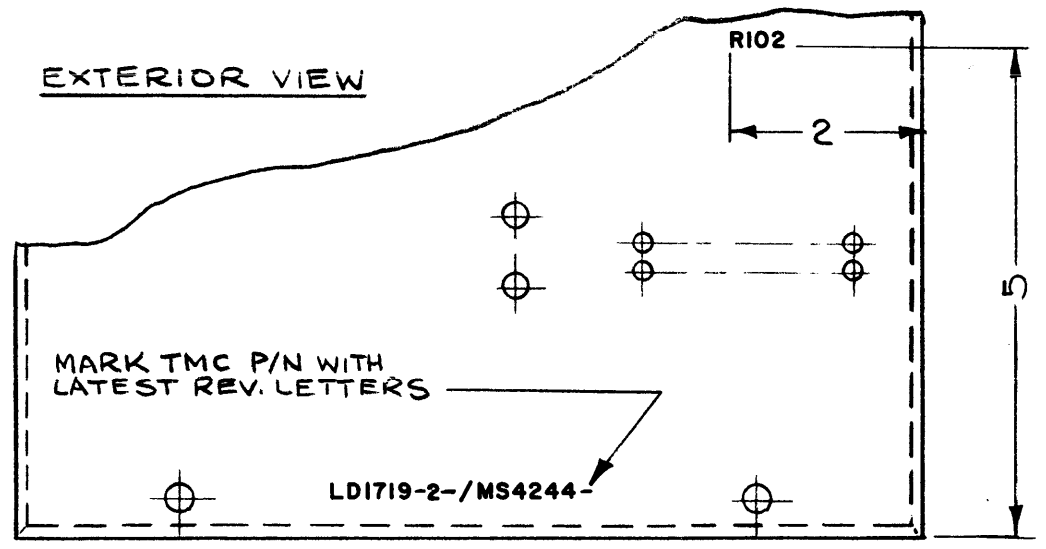
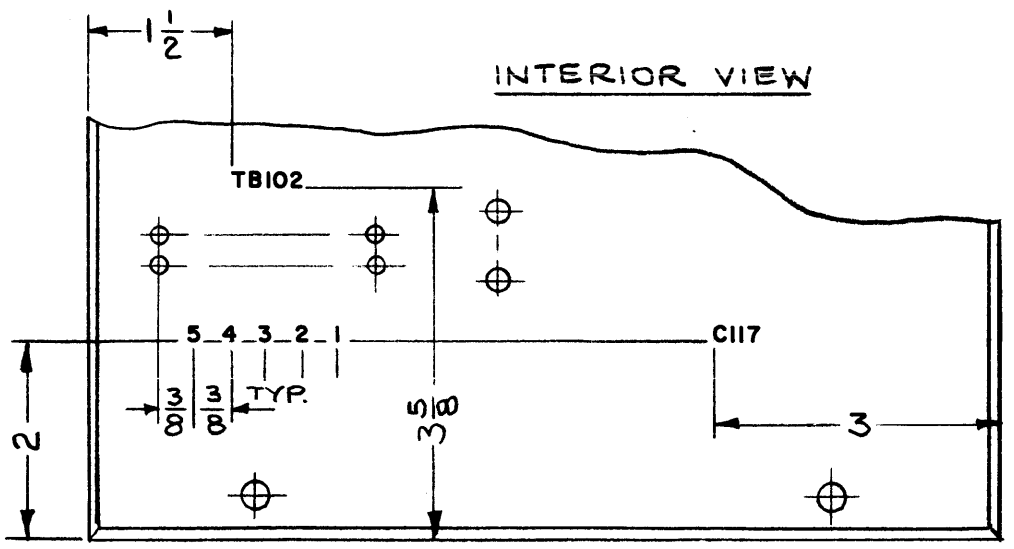
| Q'TY./UNIT | MODEL USED ON | ASS'Y. NO. |
|------------|---------------|------------|
| 1 | VLLA-1 | |
| SCALE | CODE | |
| | | |

THE CONTENTS OF THIS DRAWING ARE THE EXCLUSIVE PROPERTY OF THE TECHNICAL MATERIEL CORP. ITS UNAUTHORIZED USE OR REPRODUCTION IN WHOLE OR IN PART IS STRICTLY FORBIDDEN.

| REVISIONS | | | | | |
|-----------|---------------------------------|---------|------------|-------|-----------|
| SYM | DESCRIPTION | DATE | E.M.N. NO. | DRAFT | CHKD APPD |
| Ø | ORIGINAL RELEASE FOR PRODUCTION | 1.11.65 | X | MB | |



LD1719-1
(LEFT SIDE)



LD1719-2
(RIGHT SIDE)

REF.: MS4244

MARKING PROCESS: AS PER TMC SPECIFICATION S-727.
LETTERING: 1/8 HIGH BLACK GOTHIC, LOCATED AS SHOWN.

| | | |
|-----------|---------------|------------|
| QTY./UNIT | TER-25K-600B | ASS'Y. NO. |
| SCALE | MODEL USED ON | |
| 1:2 | CODE | |
| | A | |

THE CONTENTS OF THIS DRAWING ARE THE EXCLUSIVE PROPERTY OF THE TECHNICAL MATERIEL CORP. ITS UNAUTHORIZED USE OR REPRODUCTION IN WHOLE OR IN PART IS STRICTLY FORBIDDEN.

| REQ'D. | ITEM | PART NUMBER | DESCRIPTION | SYMBOL |
|---|------|--|-----------------|-------------------------------|
| BUDETTI LIST OF MATERIAL | | | | |
| MATERIAL | | THE TECHNICAL MATERIEL CORP. MAMARONECK, NEW YORK. | | |
| FINISH | | TITLE MARKING, FAN RESISTOR HOUSING RIGHT & LEFT SIDES | | |
| UNLESS OTHERWISE SPECIFIED DIMENSIONS ARE IN INCHES AND INCLUDE CHEMICALLY APPLIED OR PLATED FINISHES | | DRAWN hp | DATE 1.11.65 | FINAL APPROVAL [Signature] |
| DECIMALS .X ± .05 .XX ± .01 .XXX ± .05 | | CHECKED [Signature] | DATE 6/9/65 | DATE 11/9/65 |
| FRACTIONS ± 1/64 ANGLES ± 0° 30' | | ELECT. DES. [Signature] | DATE | DATE |
| TOLERANCES | | MECH. DES. [Signature] | DATE | DATE |
| | | | SHEET | REV. LTR. |
| | | | LD1719 | Ø |

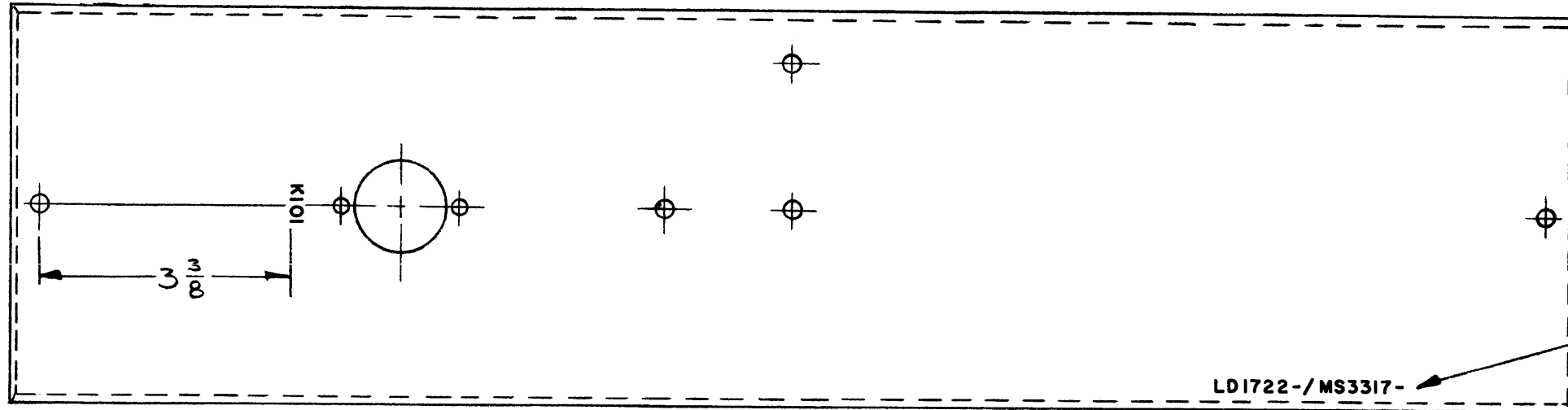
NOTES

MARKING PROCESS: AS PER TMC SPECIFICATION S-727.
 LETTERING: 1/8 HIGH BLACK GOTHIC, LOCATED AS SHOWN.

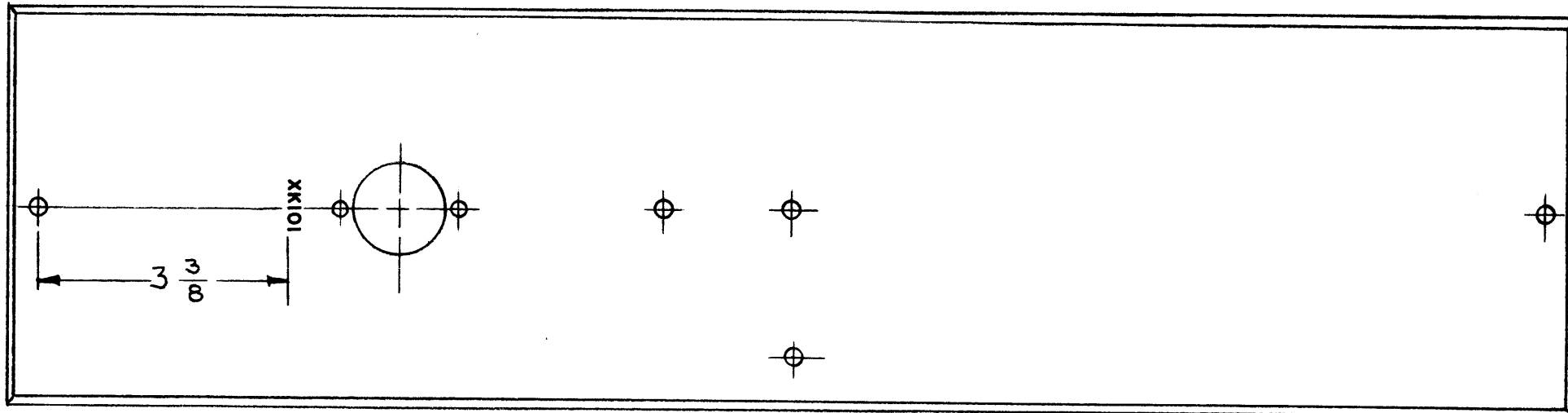
LD1722

| REVISIONS | | | | | | |
|-----------|---------------------------------|---------|------------|-------|------|------|
| SYM | DESCRIPTION | DATE | E.M.N. NO. | DRAFT | CHKD | APPD |
| Ø | ORIGINAL RELEASE FOR PRODUCTION | 1.11.64 | X | AB | | |

EXTERIOR VIEW



MARK TMC P/N WITH LATEST REV. LETTERS



REF.: MS3317

INTERIOR VIEW

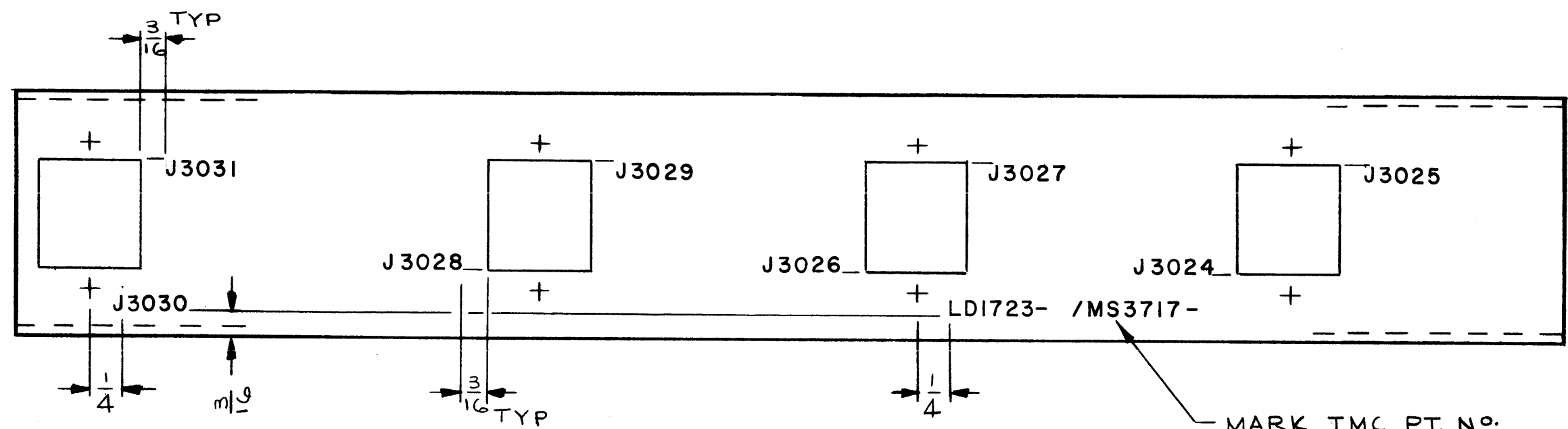
| REQ'D. | ITEM | PART NUMBER | DESCRIPTION | SYMBOL |
|---|------|--|------------------|--------------------------------------|
| | | BUDETTI | LIST OF MATERIAL | |
| MATERIAL | | THE TECHNICAL MATERIEL CORP. MAMARONECK, NEW YORK | | |
| FINISH | | TITLE MARKING, CHASSIS, COMPONENT MTG. MARKING PROCESS: TMC S727 | | |
| UNLESS OTHERWISE SPECIFIED DIMENSIONS ARE IN INCHES AND INCLUDE CHEMICALLY APPLIED OR PLATED FINISHES | | DRAWN <i>AB</i> | DATE 1.11.64 | FINAL APPROVAL <i>[Signature]</i> |
| DECIMALS .X ± .05 .XX ± .01 .XXX ± .005 | | CHECKED <i>[Signature]</i> | DATE 6-9-65 | DATE 1/9/65 |
| FRACTIONS ± 1/64 ANGLES ± 0° 30' | | ELECT. DES. | DATE | DATE |
| TOLERANCES | | MECH. DES. <i>AL</i> | DATE | DATE |
| | | SHEET | | REV. LTR. |

| | | |
|---|---------------|------------|
| Q'TY./UNIT | MODEL USED ON | ASS'Y. NO. |
| SCALE | CODE | |
| 1:2 | A | |
| TER-25K-600B | | |
| THE CONTENTS OF THIS DRAWING ARE THE EXCLUSIVE PROPERTY OF THE TECHNICAL MATERIEL CORP. ITS UNAUTHORIZED USE OR REPRODUCTION IN WHOLE OR IN PART IS STRICTLY FORBIDDEN. | | |

NOTES

LD1723 Ø

| REVISIONS | | | | | |
|-----------|---------------------------------|---------|------------|--------------------|--------------------|
| SYM | DESCRIPTION | DATE | E.M.N. NO. | DRAFT | CHKD APPD |
| X | EXP. RELEASE | 1/8/64 | X | JL | |
| X1 | J3024 THRU J3031 RELOCATED | 2-11-65 | X1 | <i>[Signature]</i> | <i>[Signature]</i> |
| Ø | ORIGINAL RELEASE FOR PRODUCTION | 2-29-65 | Ø | <i>[Signature]</i> | <i>[Signature]</i> |



MARK TMC PT. NO.
W/LATEST REV. LETTER

- UNLESS OTHERWISE SPECIFIED -

- 1- MARKING PROCESS: AS PER TMC SPECIFICATION S-727.
- 2- LETTERING: 1/8 HIGH BLACK GOTHIC, LOCATED AS SHOWN.

REF. : MS3717

| REQ'D. | ITEM | PART NUMBER | DESCRIPTION | SYMBOL |
|--------|---|-------------|---|---|
| | F. E. EATON | | LIST OF MATERIAL | |
| | MATERIAL | # | THE TECHNICAL MATERIEL CORP. MAMARONECK, NEW YORK | |
| | FINISH | # | TITLE MARKING - BRACKET, LEDEX | |
| | UNLESS OTHERWISE SPECIFIED DIMENSIONS ARE IN INCHES AND INCLUDE CHEMICALLY APPLIED OR PLATED FINISHES | | DRAWN J. LESHINSKI DATE 1/8/64 | FINAL APPROVAL <i>[Signature]</i> DATE 1-29-65 |
| | DECIMALS .X ± .05 .XX ± .01 .XXX ± .005 | TOLERANCES | FRACTIONS ± 1/64 ANGLES ± 0° 30' | DATE 2-29-65 DATE |
| | THE CONTENTS OF THIS DRAWING ARE THE EXCLUSIVE PROPERTY OF THE TECHNICAL MATERIEL CORP. ITS UNAUTHORIZED USE OR REPRODUCTION IN WHOLE OR IN PART IS STRICTLY FORBIDDEN. | | ELECT. DES. <i>[Signature]</i> MECH. DES. <i>[Signature]</i> | DATE 2-29-65 |
| | | | | LD1723 Ø |
| | | | | REV. LTR. |

| | | |
|--------------|---------------|------------|
| 1 | HFSR-1 | |
| Q'TY./UNIT | MODEL USED ON | ASS'Y. NO. |
| SCALE 1:1 | CODE A | |

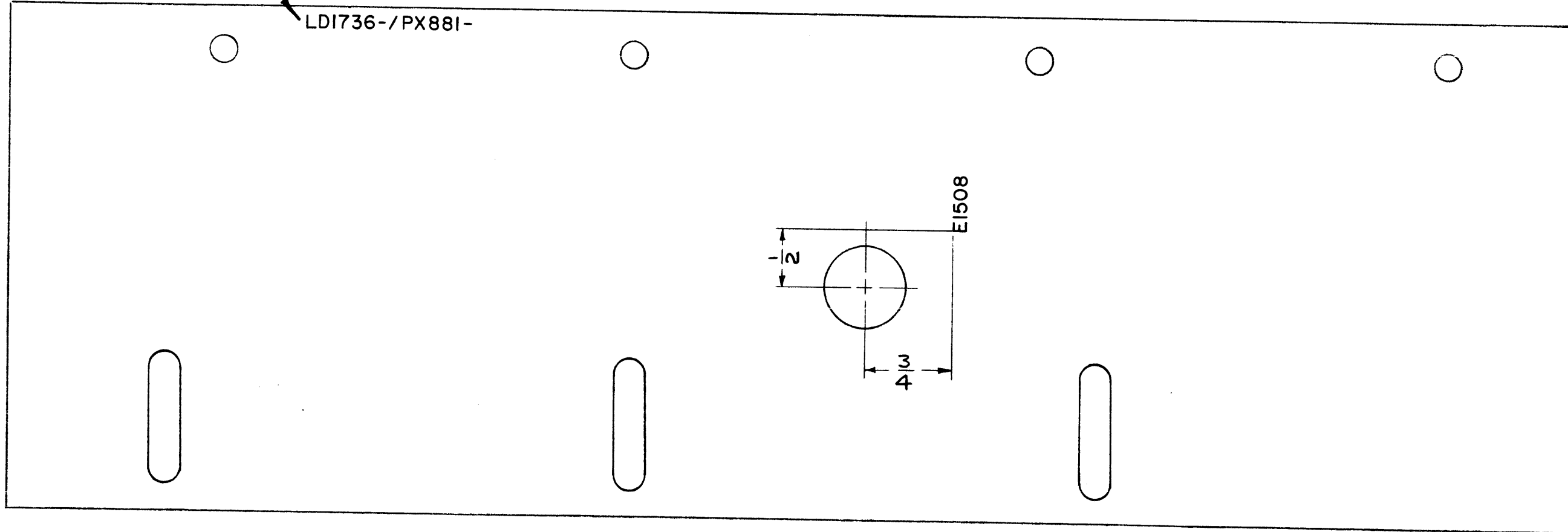
NOTES

LD1736

REVISIONS

| SYM | DESCRIPTION | DATE | E.M.N. NO. | DRAFT | CHKD | APPD |
|-----|---------------------------------|---------|------------|-------|------|------|
| X | EXPERIMENTAL RELEASE | 1.26.65 | X | JSB | | |
| Ø | ORIGINAL RELEASE FOR PRODUCTION | 2.26.65 | Ø | JS | HA | |

MARK TMC P/N, WITH LATEST REVISION LETTERS



NOTE:

1. MARKING PROCESS: AS PER TMC S-727
2. LETTERING: 1/8 HIGH WHITE GOTHIC, LOCATED AS SHOWN

REF.: PX 881

| | | |
|------------|---------------|------------|
| 1 | HVRB-1 | |
| 1 | HVRC-1 | |
| Q'TY./UNIT | MODEL USED ON | ASS'Y. NO. |
| SCALE 1:1 | CODE A | |

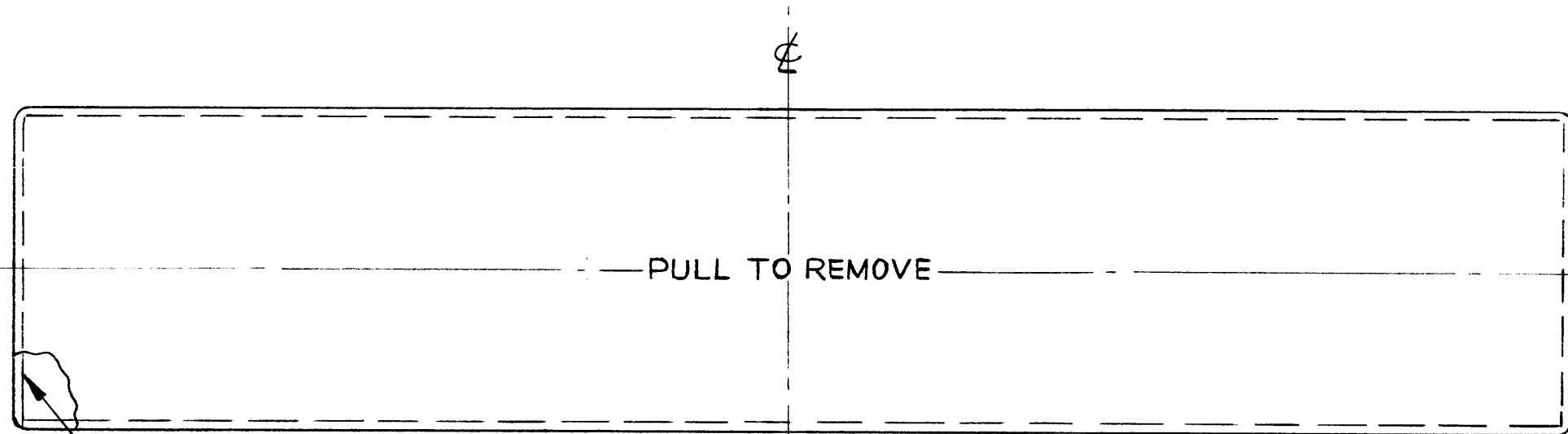
| REQ'D. | ITEM | PART NUMBER | DESCRIPTION | SYMBOL |
|--|------|-------------|--|--|
| LIST OF MATERIAL | | | | |
| MATERIAL | | | THE TECHNICAL MATERIEL CORP. MAMARONECK, NEW YORK | |
| FINISH | | | TITLE MARKING, BOARD, COMP. MTG. MARKING PROCESS: TMC-S727 | |
| UNLESS OTHERWISE SPECIFIED DIMENSIONS ARE IN INCHES AND INCL 111DF CHEMICALLY APPLIED OR PLATED FINISHES | | | DRAWN JSB CHECKED JSB ELECT. DES JSB MECH. DES JSB | DATE 1.26.65 DATE 3/26/65 DATE DATE |
| DECIMALS .X ± .05 .XX ± .01 .XXX ± .005 | | | TOLERANCES ± 1/64 ANGLES ± 0° 30' | FINAL APPROVAL DATE LD1736 SHEET REV. LTR. Ø |

NOTES

THE CONTENTS OF THIS DRAWING ARE THE EXCLUSIVE PROPERTY OF THE TECHNICAL MATERIEL CORP. ITS UNAUTHORIZED USE OR REPRODUCTION IN WHOLE OR IN PART IS STRICTLY FORBIDDEN.

LD1737

| REVISIONS | | | | | | |
|-----------|---------------------------------|---------|------------|-------|------------|------|
| SYM | DESCRIPTION | DATE | E.M.N. NO. | DRAFT | CHKD | APPD |
| X | EXPERIMENTAL RELEASE | 1-14-65 | | HLA | <i>WJF</i> | |
| Ø | ORIGINAL RELEASE FOR PRODUCTION | 2-5-65 | Ø | J.L. | <i>QJB</i> | J.M. |



UNLESS OTHERWISE SPECIFIED
 LETTERING TO BE 1/8 HIGH BLACK
 GOTHIC, LOCATED AS SHOWN.
 MARKING AS PER S-727

MARK 1/8 HIGH GOTHIC,
 LD1737/MS4148 W/LATEST REV.
 LETTER, LOCATED AS SHOWN.

REF: MS4148

| REQ'D. | ITEM | PART NUMBER | DESCRIPTION | SYMBOL |
|---|------|--|-----------------|------------------------------|
| LIST OF MATERIAL | | | | |
| MATERIAL | | THE TECHNICAL MATERIEL CORP. MAMARONECK, NEW YORK | | |
| FINISH | | TITLE MARKING-COVER, LEDEX | | |
| UNLESS OTHERWISE SPECIFIED DIMENSIONS ARE IN INCHES AND INCLUDE CHEMICALLY APPLIED OR PLATED FINISHES | | DRAWN H. AUSTIN | DATE 1-14-65 | FINAL APPROVAL <i>RJC</i> |
| | | CHECKED <i>QJB</i> | DATE | |
| | | ELECT. DES. <i>P. Barnes</i> | DATE 2/8/65 | LD1737 |
| | | MECH. DES. | DATE 2/5/65 | Ø |
| | | | SHEET | REV. LTR. |

| | | |
|------------|---------------|------------|
| 2 | HFSR-1 | |
| Q'TY./UNIT | MODEL USED ON | ASS'Y. NO. |
| SCALE | CODE | |

THE CONTENTS OF THIS DRAWING ARE THE EXCLUSIVE PROPERTY
 OF THE TECHNICAL MATERIEL CORP. ITS UNAUTHORIZED USE OR
 REPRODUCTION IN WHOLE OR IN PART IS STRICTLY FORBIDDEN.

| | | |
|--|------------|---|
| DECIMALS .X ± .05 .XX ± .01 .XXX ± .005 | TOLERANCES | FRACTIONS ± 1/64 ANGLES ± 0° 30' |
|--|------------|---|

NOTES

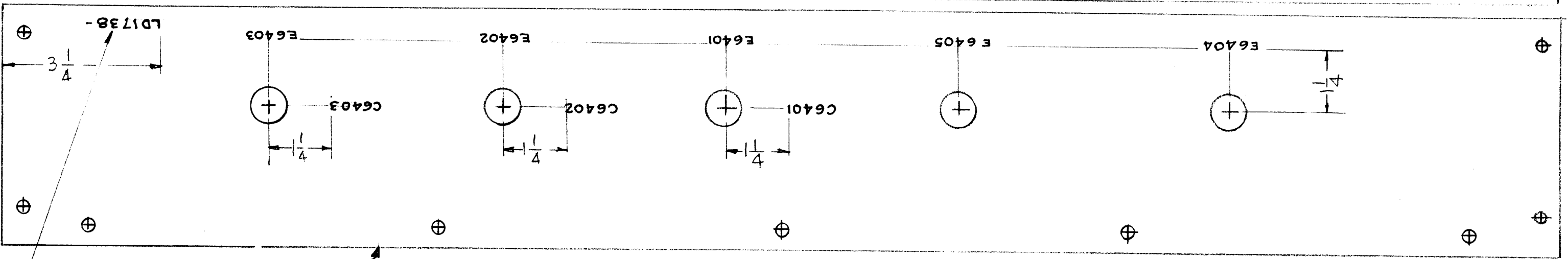
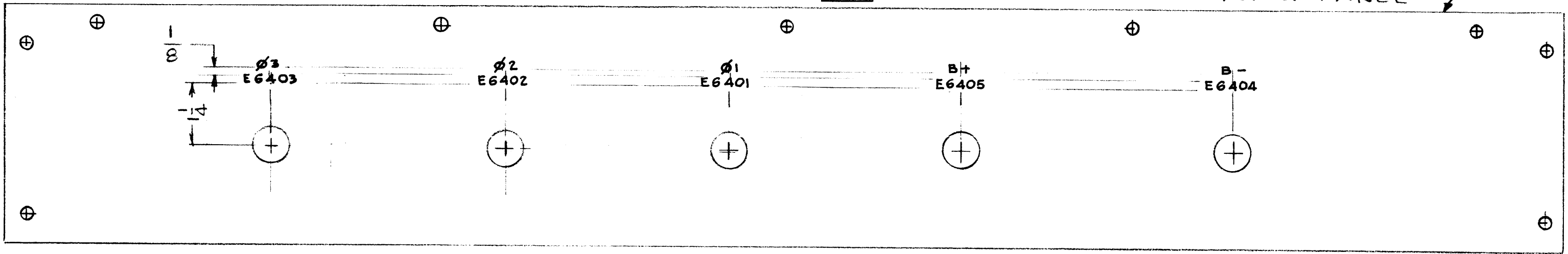
LD1738

REVISIONS

| SYM | DESCRIPTION | DATE | E.M.N. NO. | DRAFT | CHKD | APPD |
|-----|---------------------------------|---------|------------|-------|------|------|
| Ø | ORIGINAL RELEASE FOR PRODUCTION | 1-18-66 | | GDL | | RG |

EXTERIOR VIEW (REAR of UNIT)

TOP OF PANEL ↗



TOP OF PANEL ↗

INTERIOR VIEW

REF: PX895

MARK TMC P/No. W/LATEST REV. LETTER

MARKING PROCESS: AS PER TMC SPECIFICATION S-727.

LETTERING: 1/8 HIGH BLACK GOTHIC, LOCATED AS SHOWN.

NOTES

| | | |
|------------|---------------|------------|
| 1 | HVEA-1 | |
| 1 | KIT-249 | |
| Q'TY./UNIT | MODEL USED ON | ASS'Y. NO. |
| SCALE | CODE | |
| 2:1 | A | |

THE CONTENTS OF THIS DRAWING ARE THE EXCLUSIVE PROPERTY OF THE TECHNICAL MATERIEL CORP. ITS UNAUTHORIZED USE OR REPRODUCTION IN WHOLE OR IN PART IS STRICTLY FORBIDDEN.

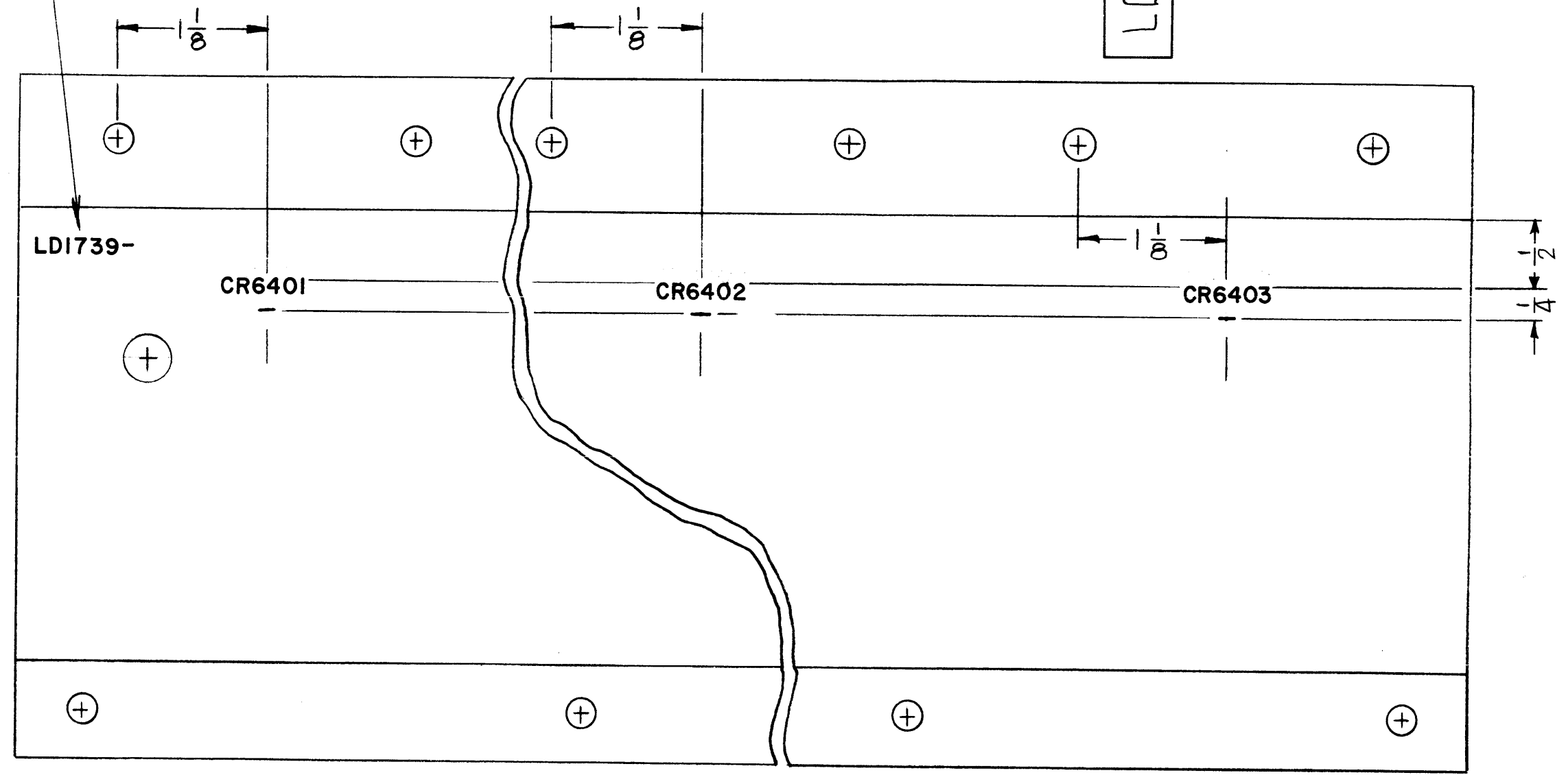
| REQ'D. | ITEM | PART NUMBER | DESCRIPTION | SYMBOL |
|---|------|-------------|--|---------|
| BUDETTI LIST OF MATERIAL | | | | |
| MATERIAL | | | THE TECHNICAL MATERIEL CORP. MAMARONECK, NEW YORK | |
| FINISH | | | TITLE MARKING BOARD MTG., HV. CONTACTS | |
| UNLESS OTHERWISE SPECIFIED DIMENSIONS ARE IN INCHES AND INCLUDE CHEMICALLY APPLIED OR PLATED FINISHES | | | DRAWN | G.D.L. |
| | | | DATE | 1-18-66 |
| DECIMALS .X ± .05 .XX ± .01 .XXX ± .005 FRACTIONS ± 1/64 ANGLES ± 0° 30' | | | CHECKED | RG |
| | | | DATE | 1-18-66 |
| TOLERANCES | | | ELECT. DES. | RG |
| | | | DATE | |
| SHEET | | | MECH. DES. | RG |
| | | | DATE | |
| REV. LTR. | | | LD1738 Ø | |
| | | | | |

LD1739 B

REVISIONS

| SYM | DESCRIPTION | DATE | E.M.N. NO. | DRAFT | CHKD | APPD |
|-----|--|---------|------------|-------|------|------|
| X1 | REDRAWN - HOLES CHGD. | 1-19-66 | | HJA | | |
| Ø | ORIGINAL RELEASE FOR PROD | 1-19-66 | Ø | | | |
| A | - WERE + | 2-16-66 | 15786 | MJY | JCS | |
| B | PX896-1 WAS PX896, HOLE ADDED, QUAN. WAS 2 | 3-23-66 | 15996 | MJY | JCS | |

MARK TMC Pt. NO. W/ LATEST REV. LETTER



MARKING TO BE ON THIS SURFACE

REF: PX896-1

MARKING PROCESS: AS PER TMC SPECIFICATION S-727.
 LETTERING: 1/8 HIGH BLACK GOTHIC, LOCATED AS SHOWN.

| | | |
|------------|---------------|------------|
| 2 | KIT-249 | |
| 1 | HVRA-1 | |
| Q'TY./UNIT | MODEL USED ON | ASS'Y. NO. |
| SCALE | CODE | |

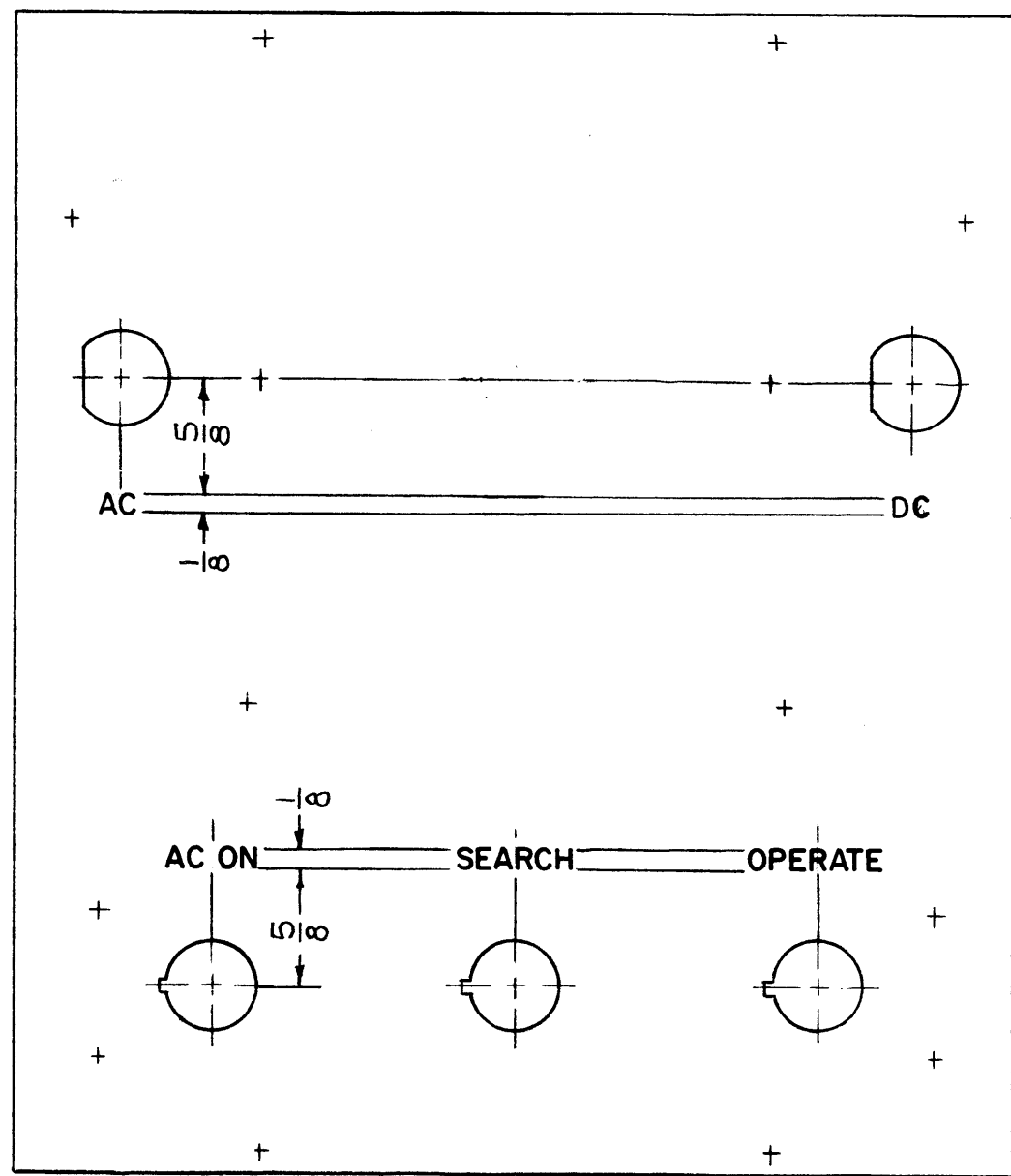
NOTES

THE CONTENTS OF THIS DRAWING ARE THE EXCLUSIVE PROPERTY OF THE TECHNICAL MATERIEL CORP. ITS UNAUTHORIZED USE OR REPRODUCTION IN WHOLE OR IN PART IS STRICTLY FORBIDDEN.

| REQ'D. | ITEM | PART NUMBER | DESCRIPTION | SYMBOL |
|---|------|-------------|--|---------------------------------------|
| LIST OF MATERIAL | | | | |
| MATERIAL | | | THE TECHNICAL MATERIEL CORP. MAMARONECK, NEW YORK | |
| FINISH | | | TITLE MARKING, BRACKET, MTG, RECTIFIER | |
| UNLESS OTHERWISE SPECIFIED DIMENSIONS ARE IN INCHES AND INCLUDE CHEMICALLY APPLIED OR PLATED FINISHES | | | DRAWN H. AUSTIN DATE 1-19-66 | FINAL APPROVAL DATE 1/19/66 |
| DECIMALS .X ± .05 .XX ± .01 .XXX ± .005 | | | ELECT. DES. DATE | LD1739 B |
| FRACTIONS ± 1/64 ANGLES ± 0° 30' | | | MECH. DES. DATE | SHEET REV. LTR. |
| | | | M/L HJA 1-19-66 | |

LD1750

| REVISIONS | | | | | | |
|----------------|---|--------|----------------|-------|------|------|
| SYM | DESCRIPTION | DATE | E.M.N. NO. | DRAFT | CHKD | APPD |
| X ₁ | REMOVED TITLE INSERTS, REPLACED BY NAME PLATE | 4-1-65 | X ₁ | SRG | | |
| Ø | ORIG RELEASE FOR PRODUCTION | 5-5-67 | Ø | RG | | |



| HEIGHT OF LETTERS | DEPTH OF STROKE | WIDTH OF STROKE |
|-------------------|-----------------|-----------------|
| 1/8 | .010 | .020 |

NOTES.
 - ALL LETTER GROUPS TO BE CENTERED ON HOLES.
 - ENGRAVING TO BE GOTHIC WHITE FILLED SIZES SHOWN.

MARK TMC PART NO.
 LD1750- /MS4292-
 1/8 HIGH GOTHIC W/LATEST
 REV. LETTER (ON REAR).

REF: MS4292

| REQ'D. | ITEM | PART NUMBER | DESCRIPTION | SYMBOL |
|---|------|---|-----------------|--|
| F. BUDETTI LIST OF MATERIAL | | | | |
| MATERIAL | | THE TECHNICAL MATERIEL CORP. MAMARONECK, NEW YORK | | |
| FINISH | | TITLE MARKING, PANEL FRONT, SERVO MODULE MARKING PROCESS: ENGRAVING | | |
| UNLESS OTHERWISE SPECIFIED DIMENSIONS ARE IN INCHES AND INCLUDE CHEMICALLY APPLIED OR PLATED FINISHES | | DRAWN SRG | DATE 3-16-65 | FINAL APPROVAL <i>[Signature]</i> DATE 5/5/67 |
| DECIMALS .X ± .05 .XX ± .01 .XXX ± .005 | | TOLERANCES | | DATE LD1750 |
| FRACTIONS ± 1/64 ANGLES ± 0° 30' | | ELECT. DES. <i>[Signature]</i> | DATE | REV. LTR. Ø |
| | | MECH. DES. <i>[Signature]</i> | DATE | SHEET |

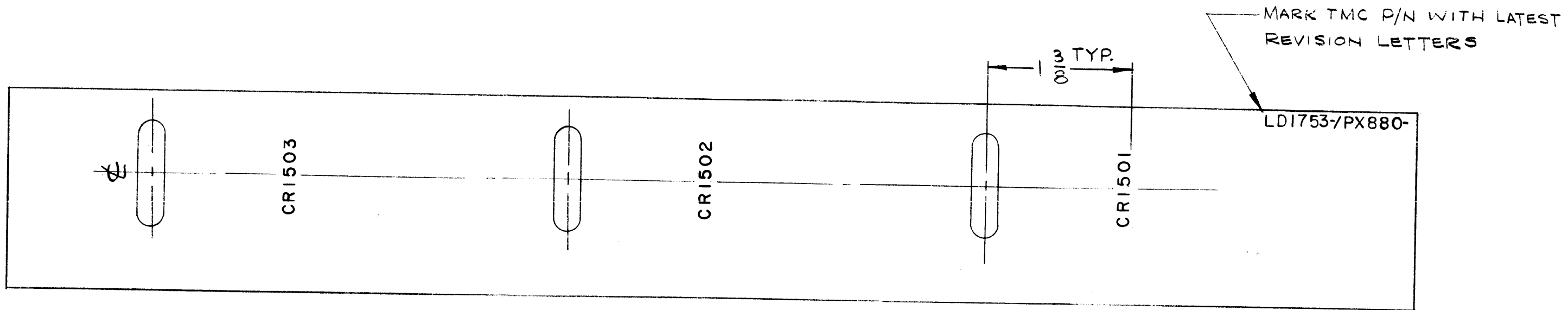
| | | |
|--------------|---------------|------------|
| 1 EA. | TSTE 10K | |
| Q'TY./UNIT | MODEL USED ON | ASS'Y. NO. |
| SCALE 1:1 | CODE A | |

THE CONTENTS OF THIS DRAWING ARE THE EXCLUSIVE PROPERTY OF THE TECHNICAL MATERIEL CORP. ITS UNAUTHORIZED USE OR REPRODUCTION IN WHOLE OR IN PART IS STRICTLY FORBIDDEN.

NOTES

LD1753

| REVISIONS | | | | | | |
|-----------|---------------------------------|---------|------------|-------|------|------|
| SYM | DESCRIPTION | DATE | E.M.N. NO. | DRAFT | CHKD | APPD |
| X | EXPERIMENTAL RELEASE | 1-26-65 | | HLA | | |
| Ø | ORIGINAL RELEASE FOR PRODUCTION | 2-26-65 | | JF | HL | |



NOTE:
 MARKING PROCESS: PER TMC SPEC. S-727
 LETTERING: 1/8 HIGH WHITE, GOTHIC
 LOCATED AS SHOWN.

REF: PX 880

| REQ'D. | ITEM | PART NUMBER | DESCRIPTION | SYMBOL |
|---|------|---|--------------------------------------|---|
| LIST OF MATERIAL | | | | |
| MATERIAL | | THE TECHNICAL MATERIEL CORP. MAMARONECK, NEW YORK | | |
| FINISH | | TITLE MARKING, BOARD, COMPONENT MTG. | | |
| UNLESS OTHERWISE SPECIFIED DIMENSIONS ARE IN INCHES AND INCLUDE CHEMICALLY APPLIED OR PLATED FINISHES | | DRAWN H. AUSTIN CHECKED JCS ELECT. DES. JCS MECH. DES. JCS | DATE 1-26-65 DATE 3/26/65 DATE | FINAL APPROVAL DATE LD1753 SHEET |
| DECIMALS .X ± .05 .XX ± .01 .XXX ± .005 | | TOLERANCES ± 1/64 ANGLES ± 0° 30' | | Ø REV. LTR. |

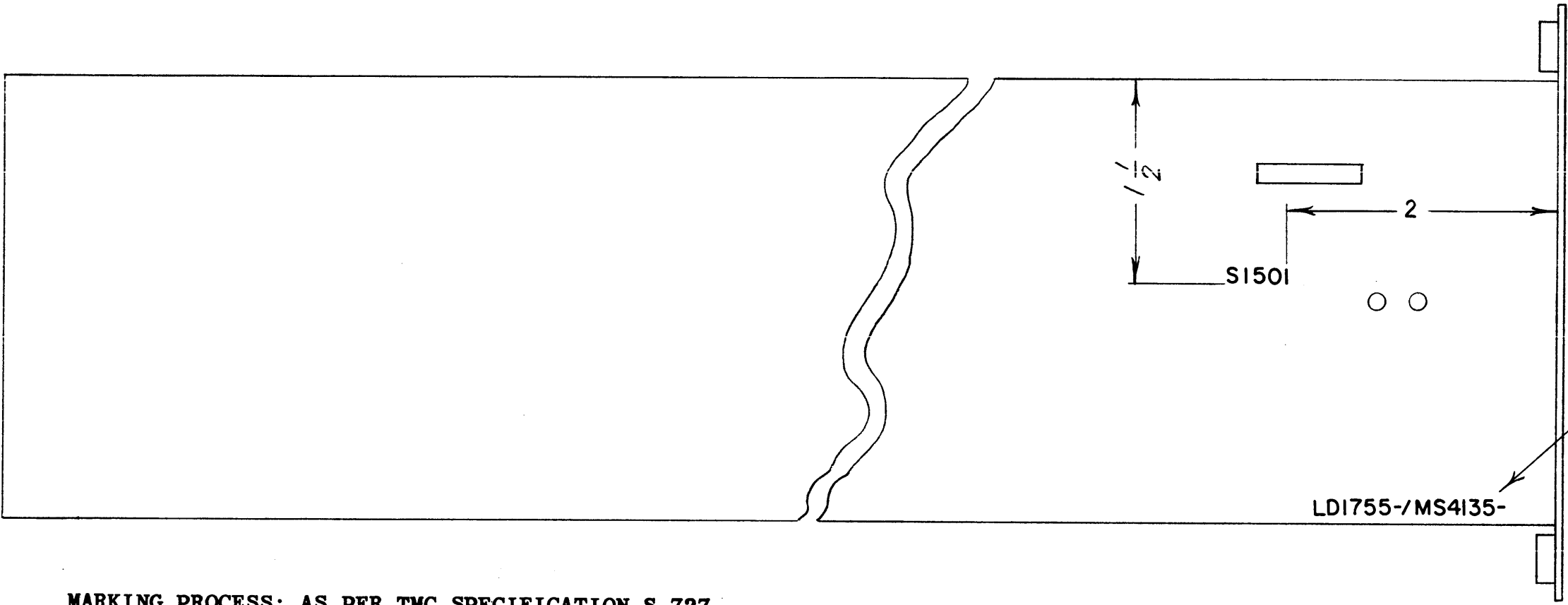
| Q'TY./UNIT | MODEL USED ON | ASS'Y. NO. |
|------------|---------------|------------|
| 1 | HVRB-1 | |
| 1 | HVRC-1 | |
| SCALE | CODE | |

THE CONTENTS OF THIS DRAWING ARE THE EXCLUSIVE PROPERTY OF THE TECHNICAL MATERIEL CORP. ITS UNAUTHORIZED USE OR REPRODUCTION IN WHOLE OR IN PART IS STRICTLY FORBIDDEN.

NOTES

LD1755

| REVISIONS | | | | | | |
|-----------|---------------------------------|--------|------------|-------|------|------|
| SYM | DESCRIPTION | DATE | E.M.N. NO. | DRAFT | CHKD | APFD |
| X1 | REDRAWN FROM 1 SIZE & REVISED | 6-4-65 | -M | DLA | | |
| Ø | ORIGINAL RELEASE FOR PRODUCTION | 6-7-65 | -M | DLA | | |



MARKING PROCESS: AS PER TMC SPECIFICATION S-727.
 LETTERING: 1/8 HIGH BLACK GOTHIC, LOCATED AS SHOWN.

REF. : MS4135

| REQ'D. | ITEM | PART NUMBER | DESCRIPTION | SYMBOL |
|---|------------|--|----------------------------------|--------------------------------------|
| BUDETTI LIST OF MATERIAL | | | | |
| MATERIAL | | THE TECHNICAL MATERIEL CORP. MAMARONECK, NEW YORK | | |
| FINISH | | TITLE MARKING, CHAMBER, AIR | | |
| UNLESS OTHERWISE SPECIFIED DIMENSIONS ARE IN INCHES AND INCLUDE CHEMICALLY APPLIED OR PLATED FINISHES | | DRAWN H. Austin CHECKED DLA | DATE 6-4-65 DATE 6-7-65 | FINAL APPROVAL DATE 6-7-65 |
| DECIMALS .X ± .05 .XX ± .01 .XXX ± .005 | TOLERANCES | FRACTIONS ± 1/64 ANGLES ± 0° 30' | ELECT. DES. MECH. DES. | SHEET LD1755 REV. LTR. Ø |

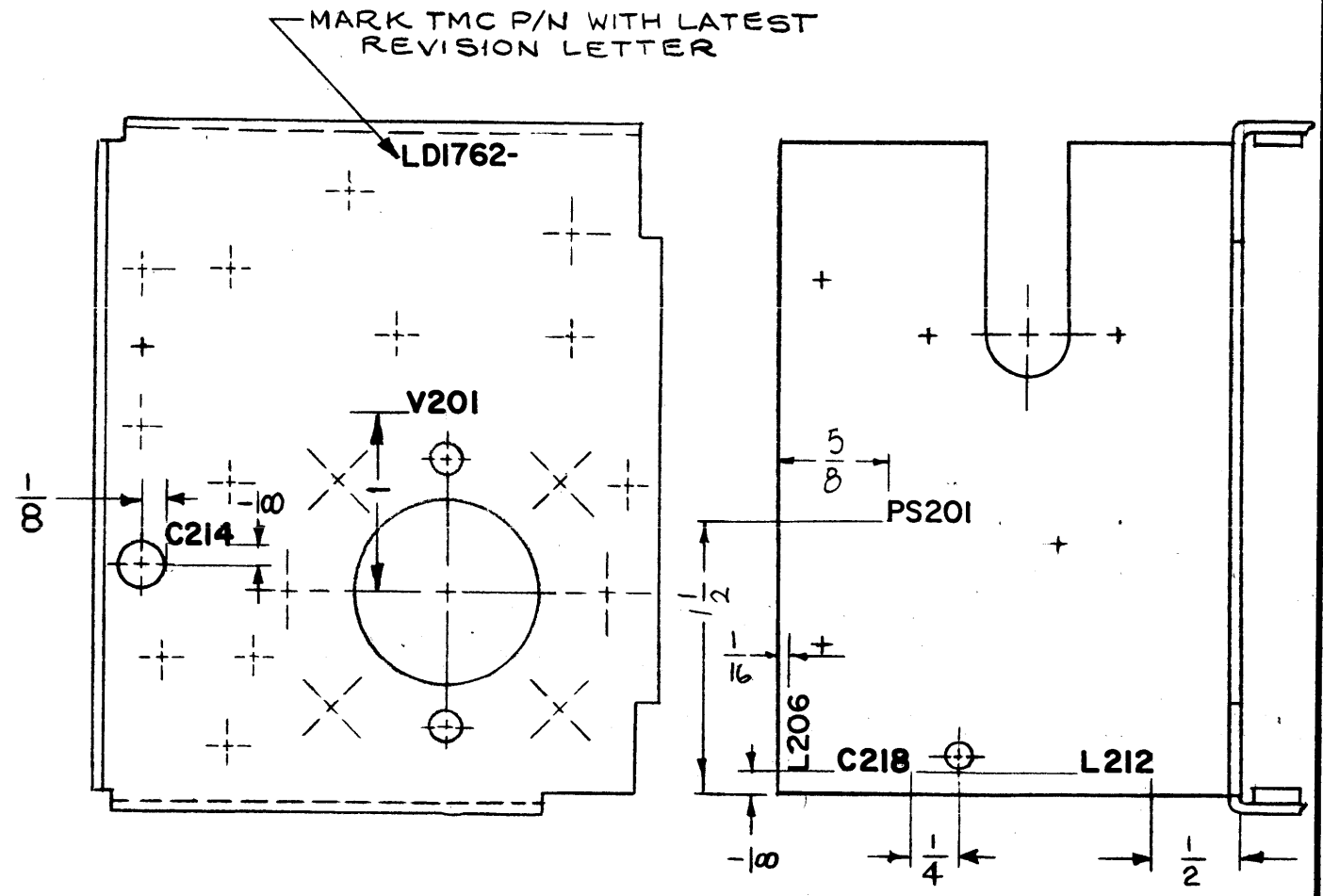
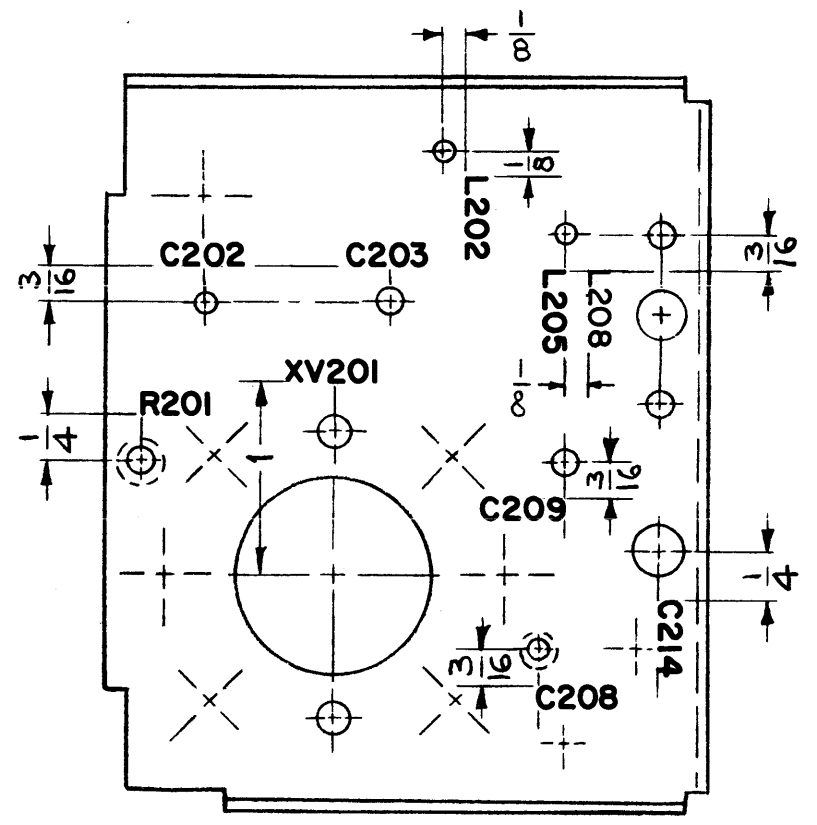
| | | |
|------------|---------------|------------|
| 1 | HVRC-1 | GPT-10K |
| Q'TY./UNIT | MODEL USED ON | ASS'Y. NO. |
| SCALE | CODE | |

NOTES

THE CONTENTS OF THIS DRAWING ARE THE EXCLUSIVE PROPERTY OF THE TECHNICAL MATERIEL CORP. ITS UNAUTHORIZED USE OR REPRODUCTION IN WHOLE OR IN PART IS STRICTLY FORBIDDEN.

LD1762

| REVISIONS | | | | | |
|----------------|--------------------------------------|---------|----------------|-------|--------------------|
| SYM | DESCRIPTION | DATE | E.M.N. NO. | DRAFT | CHKD APPD |
| X | EXP. RELEASE | 1-20-65 | X | SRG | |
| X ₁ | LETTERING ADDED | 3/8/65 | X ₁ | SRG | |
| X ₂ | C214 WAS C211 (2 PL.), C218 WAS C214 | 4-21-65 | X ₂ | SRG | |
| X ₃ | L206 & L208 RELOCATED, PS 201 ADDED | 6-7-65 | X ₃ | ADH | <i>[Signature]</i> |
| Ø | ORIGINAL RELEASE FOR PRODUCTION | 6.7.66 | Ø | WW | <i>[Signature]</i> |



MARKING PROCESS: AS PER TMC SPECIFICATION S-727.
LETTERING: 1/8 HIGH BLACK GOTHIC, LOCATED AS SHOWN.

| | | |
|------------|---------------|------------|
| RFTA-1 | | |
| Q'TY./UNIT | MODEL USED ON | ASS'Y. NO. |
| SCALE | CODE | |
| 1:1 | A | |

THE CONTENTS OF THIS DRAWING ARE THE EXCLUSIVE PROPERTY OF THE TECHNICAL MATERIEL CORP. ITS UNAUTHORIZED USE OR REPRODUCTION IN WHOLE OR IN PART IS STRICTLY FORBIDDEN.

NOTES

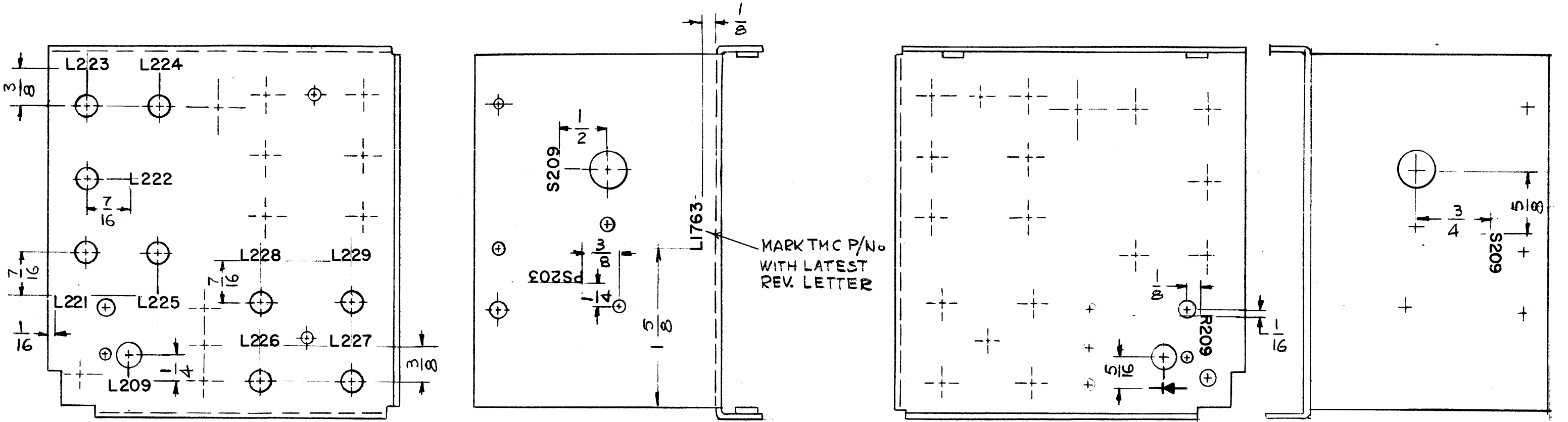
REF: MS 4317-

| | | | | |
|---|---|---|---|---|
| REQ'D. | ITEM | PART NUMBER | DESCRIPTION | SYMBOL |
| F. BUDETT LIST OF MATERIAL | | | | |
| MATERIAL | | THE TECHNICAL MATERIEL CORP. MAMARONECK, NEW YORK | | |
| FINISH | | TITLE MARKING, CHASSIS COMPONENT MTG MARKING PROCESS AS PER TMC SPEC. S727 | | |
| UNLESS OTHERWISE SPECIFIED DIMENSIONS ARE IN INCHES AND INCLUDE CHEMICALLY APPLIED OR PLATED FINISHES | | DRAWN SRG CHECKED <i>[Signature]</i> ELECT. DES. <i>[Signature]</i> MECH. DES. <i>[Signature]</i> | DATE 1-20-65 DATE 6-6-66 DATE DATE | FINAL APPROVAL <i>[Signature]</i> DATE 4/1/66 Ø |
| DECIMALS .X ± .05 .XX ± .01 .XXX ± .005 | FRACTIONS ± 1/64 ANGLES ± 0° 30' | SHEET LD1762 REV. LTR. | | |

HL *[Signature]* 6/8/66

LD1763

| REVISIONS | | | | | |
|-----------|---------------------------------|---------|------------|-------|-----------|
| SYM | DESCRIPTION | DATE | E.M.N. NO. | DRAFT | CHKD APPD |
| X | EXP. RELEASE | 1-20-65 | X | SRG | |
| X | LETTERING ADDED | 6-14-65 | X | SRG | |
| Ø | ORIGINAL RELEASE FOR PRODUCTION | 6-7-66 | | | JLo |



MARKING PROCESS: AS PER TMC SPECIFICATION S-727.
LETTERING: 1/8 HIGH BLACK GOTHIC, LOCATED AS SHOWN.

REF. MS 4316

| REQ'D. | ITEM | PART NUMBER | DESCRIPTION | SYMBOL |
|---|------|--|-------------|----------------|
| F. BUDETTI LIST OF MATERIAL | | | | |
| MATERIAL | | THE TECHNICAL MATERIEL CORP. MAMARONECK, NEW YORK | | |
| FINISH | | TITLE MARKING, CHASSIS SWITCH MTG MARKING PROCESS: AS PER TMC SPEC S-727 | | |
| UNLESS OTHERWISE SPECIFIED DIMENSIONS ARE IN INCHES AND INCLUDE CHEMICALLY APPLIED OR PLATED FINISHES | | DRAWN | DATE | FINAL APPROVAL |
| DECIMALS .X ± .05 .XX ± .01 .XXX ± .005 | | CHECKED | DATE | DATE |
| FRACTIONS ± 1/64 ANGLES ± 0° 30' | | ELECT. DES. | DATE | DATE |
| TOLERANCES | | MECH. DES. | DATE | DATE |
| SHEET | | | | REV. LTR. |

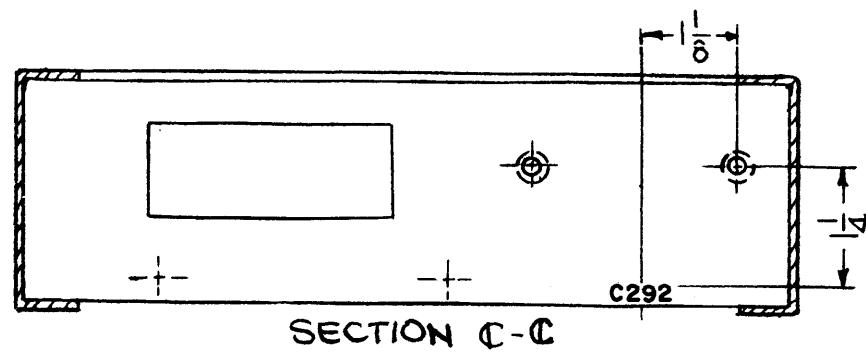
| | | |
|---|---------------|------------|
| 1 | RFTA-1 | |
| Q'TY./UNIT | MODEL USED ON | ASS'Y. NO. |
| SCALE 1:1 | CODE A | |
| THE CONTENTS OF THIS DRAWING ARE THE EXCLUSIVE PROPERTY OF THE TECHNICAL MATERIEL CORP. ITS UNAUTHORIZED USE OR REPRODUCTION IN WHOLE OR IN PART IS STRICTLY FORBIDDEN. | | |

NOTES

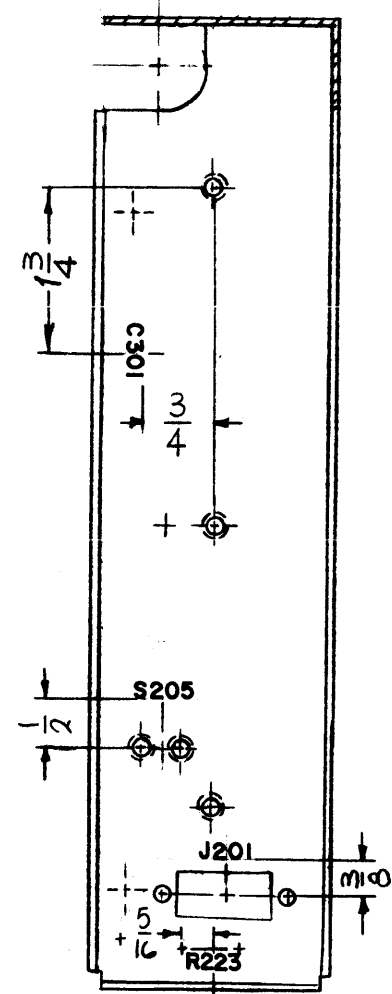
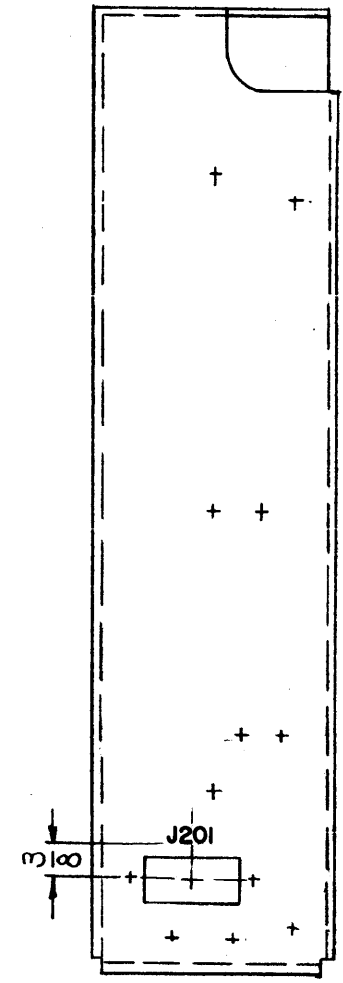
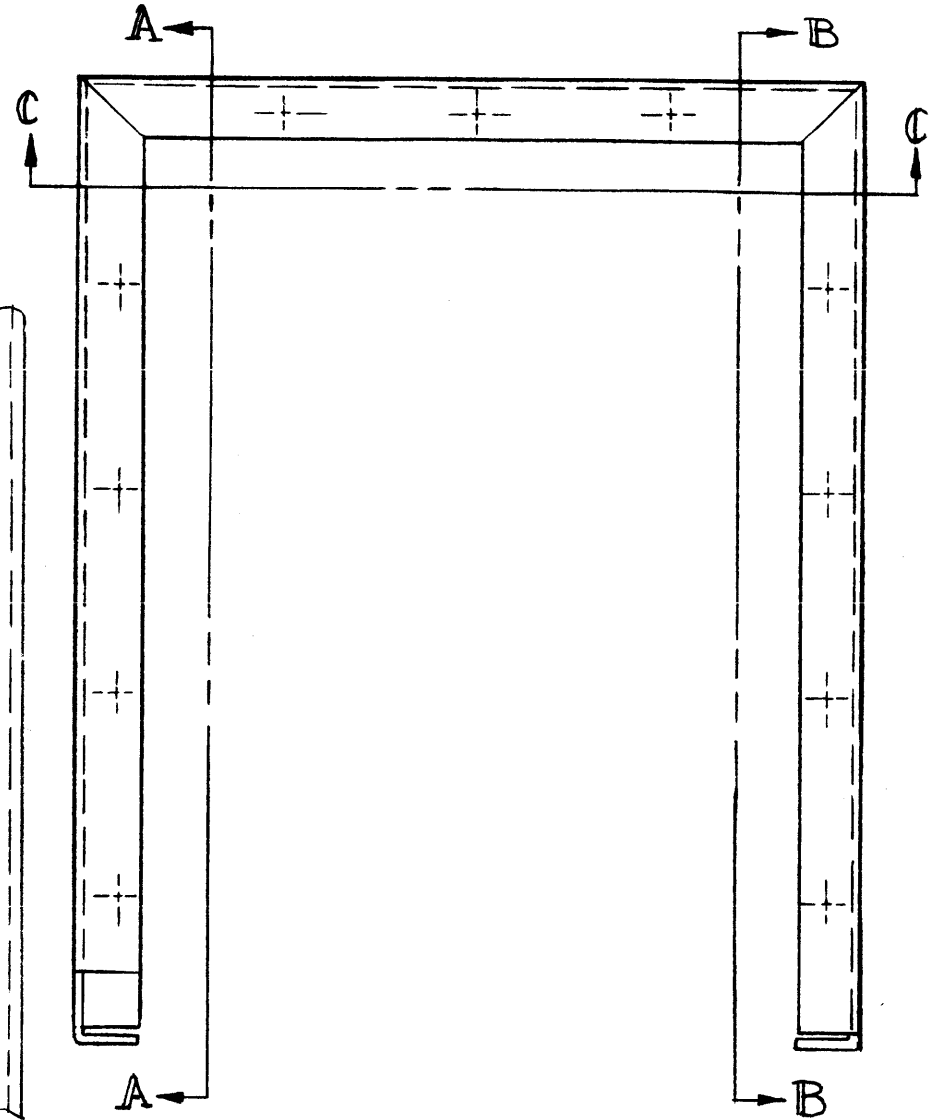
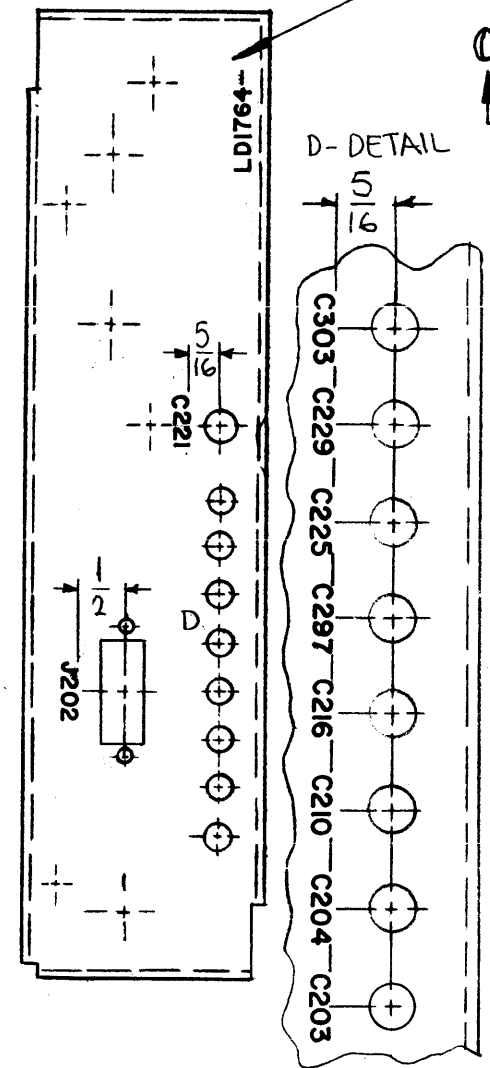
LD1764

REVISIONS

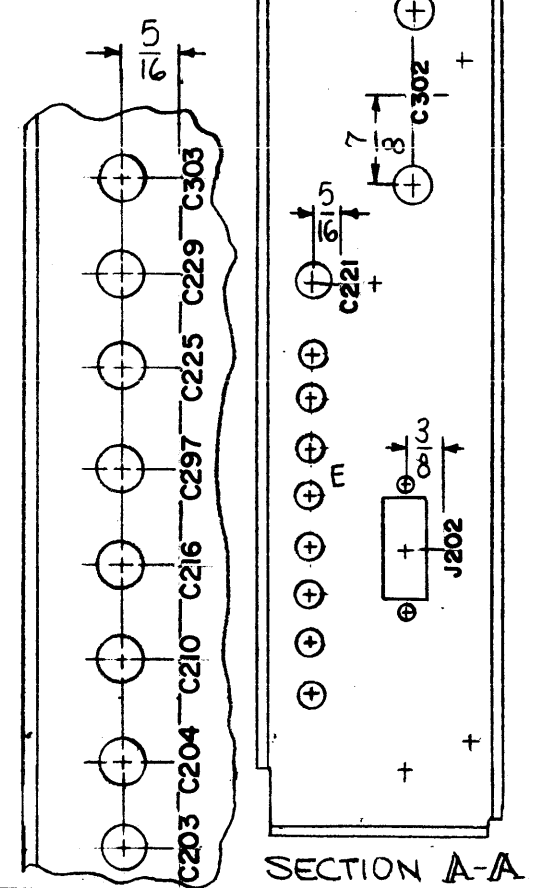
| SYM | DESCRIPTION | DATE | E.M.N. NO. | DRAFT | CHKD | APPD |
|-----|---------------------------------|---------|------------|-------|------|------|
| X | EXP. RELEASE | 1-21-65 | X | SRG | | |
| X1 | LETTERING ADDED | 5-18-65 | X1 | SRG | | |
| X2 | C203 ADDED | 6-28-65 | X2 | SRG | | |
| Ø | ORIGINAL RELEASE FOR PRODUCTION | 5-23-66 | Ø | CV | | JH |



MARK TMC P/N
 8 HIGH GOTHIC
 W/LATEST REVISION
 LETTER



E-DETAIL



MARKING PROCESS: AS PER TMC SPECIFICATION S-727.
 LETTERING: 3/32 HIGH BLACK GOTHIC, LOCATED AS SHOWN.

REF: MS4306

| REQ'D. | ITEM | PART NUMBER | DESCRIPTION | SYMBOL |
|------------------------------------|------|-------------|---------------------------------------|--------|
| F. BUDETTI LIST OF MATERIAL | | | | |
| MATERIAL | | | THE TECHNICAL MATERIEL CORP. | |
| FINISH | | | MAMARONECK, NEW YORK | |
| TITLE | | | MARKING, CHASSIS CAPACITOR MTG. | |
| DRAWN | | | MARKING PROCESS AS PER TMC SPEC. S727 | |
| CHECKED | | | DATE | DATE |
| ELECT. DES. | | | DATE | DATE |
| MECH. DES. | | | DATE | DATE |
| TOLERANCES | | | LD1764 | |
| DECIMALS | | | SHEET | |
| FRACTIONS | | | REV. LTR. | |
| ANGLES | | | | |
| ± 0° 30' | | | | |

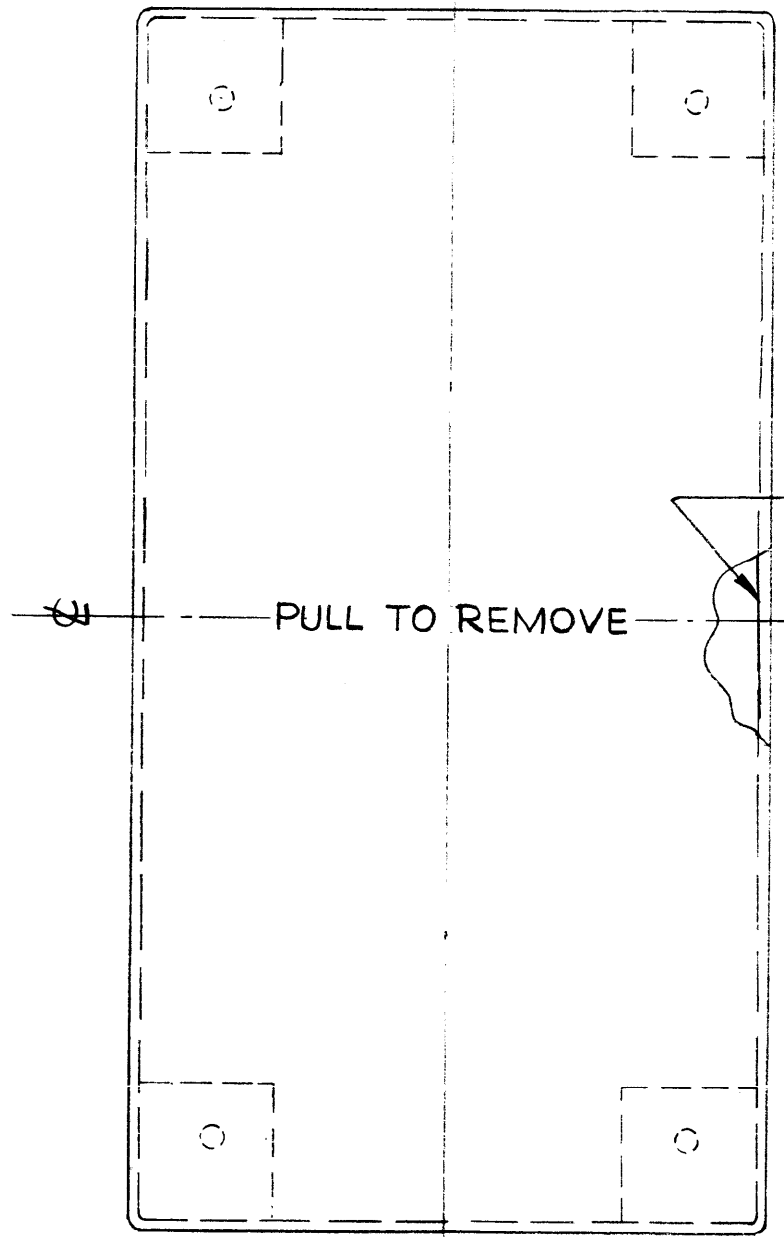
| | | |
|---|---------------|------------|
| 1 | RFTA-1 | |
| Q'TY./UNIT | MODEL USED ON | ASS'Y. NO. |
| SCALE | CODE | |
| 1/2:1 | A | |
| THE CONTENTS OF THIS DRAWING ARE THE EXCLUSIVE PROPERTY OF THE TECHNICAL MATERIEL CORP. ITS UNAUTHORIZED USE OR REPRODUCTION IN WHOLE OR IN PART IS STRICTLY FORBIDDEN. | | |

NOTES

LD1777

REVISIONS

| SYM | DESCRIPTION | DATE | E.M.N. NO. | DRAFT | CHKD | APPD |
|-----|---------------------------------|---------|------------|-------|------|------|
| X | EXPERIMENTAL RELEASE | 1-29-65 | | HLA | | |
| Ø | ORIGINAL RELEASE FOR PRODUCTION | 2-5-65 | Ø | J.M. | | |



UNLESS OTHERWISE SPECIFIED,
 LETTERING TO BE 1/8 HIGH BLACK
 GOTHIC, LOCATED AS SHOWN.
 AS PER TMC SPEC S727.

MARK 1/8 HIGH GOTHIC,
 LD1777/MS4151 W/LATEST
 REV. LETTER, LOCATED
 AS SHOWN.

REF: MS4151

| REQ'D. | ITEM | PART NUMBER | DESCRIPTION | SYMBOL |
|---|------|--|-----------------|-----------------------|
| LIST OF MATERIAL | | | | |
| MATERIAL | | THE TECHNICAL MATERIEL CORP. MAMARONECK, NEW YORK | | |
| FINISH | | MARKING-COVER, LEDEX | | |
| UNLESS OTHERWISE SPECIFIED DIMENSIONS ARE IN INCHES AND INCLUDE CHEMICALLY APPLIED OR PLATED FINISHES | | DRAWN H AUSTIN | DATE 1-29-65 | FINAL APPROVAL RAC |
| | | CHECKED J.M. | DATE | |
| | | ELECT. DES. | DATE | LD1777 |
| | | MECH. DES. | DATE | Ø |
| | | | SHEET | REV. LTR. |

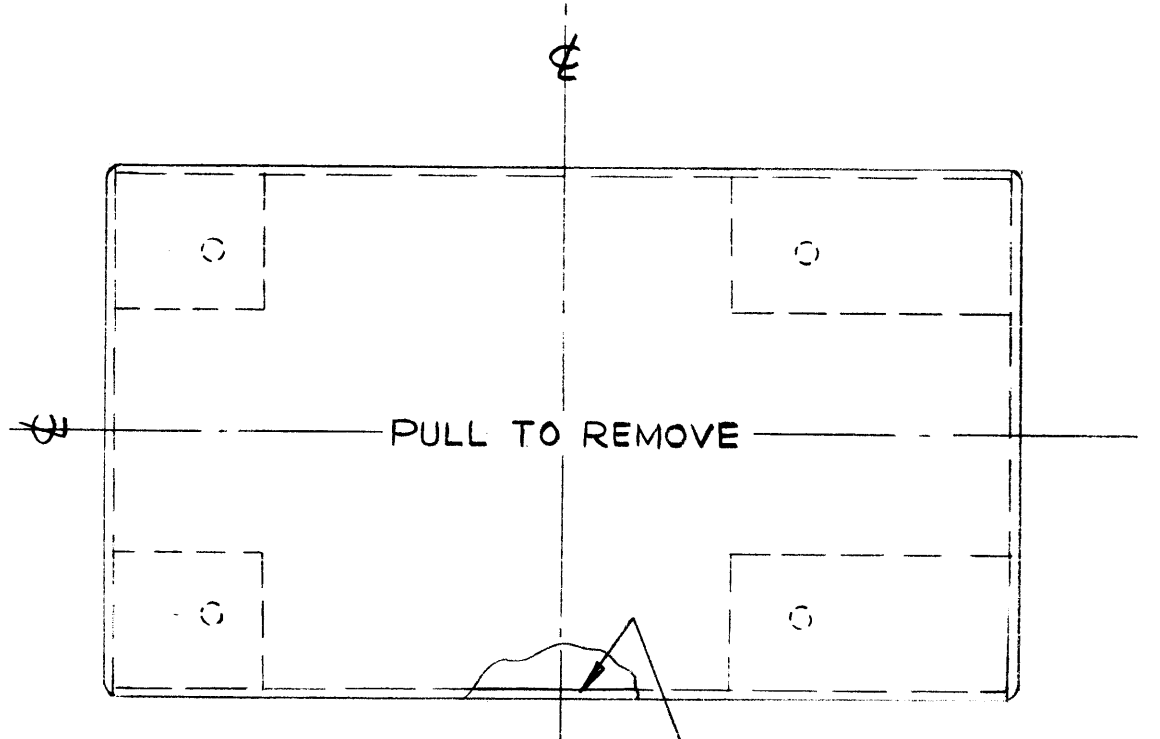
| | | |
|---|---------------|------------|
| 1 | HFSR-1 | |
| Q'TY./UNIT | MODEL USED ON | ASS'Y. NO. |
| SCALE | CODE | |
| THE CONTENTS OF THIS DRAWING ARE THE EXCLUSIVE PROPERTY OF THE TECHNICAL MATERIEL CORP. ITS UNAUTHORIZED USE OR REPRODUCTION IN WHOLE OR IN PART IS STRICTLY FORBIDDEN. | | |

NOTES

LD1778 Ø

REVISIONS

| SYM | DESCRIPTION | DATE | E.M.N. NO. | DRAFT | CHKD | APPD |
|-----|---------------------------------|---------|------------|-------|------|------|
| X | EXPERIMENTAL RELEASE | 1-29-65 | | NLA | | |
| Ø | ORIGINAL RELEASE FOR PRODUCTION | 2-5-65 | | Ø | Ø | J.M. |



UNLESS OTHERWISE SPECIFIED,
 LETTERING TO BE 1/8 HIGH BLACK
 GOTHIC, LOCATED AS SHOWN.
 MARKING AS PER S-727

MARK 1/8 HIGH GOTHIC,
 LD1778/MS4150 W/LATEST
 REV. LETTER, LOCATED AS
 SHOWN.

REF: MS4150

| REQ'D. | ITEM | PART NUMBER | DESCRIPTION | SYMBOL |
|---|------|--|-------------|-----------------------------------|
| LIST OF MATERIAL | | | | |
| MATERIAL | | THE TECHNICAL MATERIEL CORP. MAMARONECK, NEW YORK | | |
| FINISH | | TITLE MARKING-COVER, LEDEX | | |
| UNLESS OTHERWISE SPECIFIED DIMENSIONS ARE IN INCHES AND INCLUDE CHEMICALLY APPLIED OR PLATED FINISHES | | DRAWN H. AUSTIN | DATE | FINAL APPROVAL RAC |
| | | CHECKED <i>[Signature]</i> | DATE | |
| DECIMALS .X ± .05 .XX ± .01 .XXX ± .005 | | FRACTIONS ± 1/64 ANGLES ± 0° 30' | | ELECT. DES. <i>[Signature]</i> |
| TOLERANCES | | MECH. DES. <i>[Signature]</i> | | DATE 2/8/65 |
| | | | | LD1778 Ø |
| | | | | REV. LTR. |

| Q'TY./UNIT | MODEL USED ON | ASS'Y. NO. |
|------------|---------------|------------|
| 1 | HFIR-1 | |
| SCALE | CODE | |
| | | |

NOTES

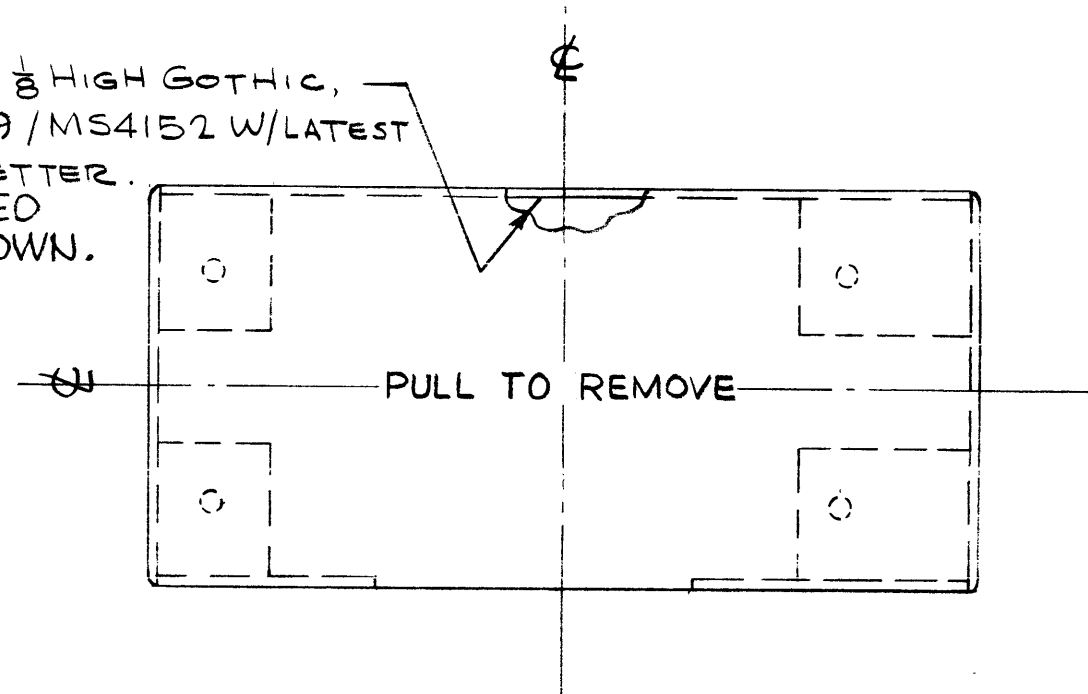
THE CONTENTS OF THIS DRAWING ARE THE EXCLUSIVE PROPERTY OF THE TECHNICAL MATERIEL CORP. ITS UNAUTHORIZED USE OR REPRODUCTION IN WHOLE OR IN PART IS STRICTLY FORBIDDEN.

LD1779

REVISIONS

| SYM | DESCRIPTION | DATE | E.M.N. NO. | DRAFT | CHKD | APPD |
|-----|---------------------------------|---------|------------|-------|------|------|
| X | EXPERIMENTAL RELEASE | 1-29-65 | | HLA | | |
| Ø | ORIGINAL RELEASE FOR PRODUCTION | 2-5-65 | Ø | Ø | J.M. | |

MARK 1/8 HIGH GOTHIC,
LD1779 / MS4152 W/LATEST
REV. LETTER.
LOCATED
AS SHOWN.



UNLESS OTHERWISE SPECIFIED,
LETTERING TO BE 1/8 HIGH BLACK
GOTHIC, LOCATED AS SHOWN
MARKING PER S-727

REF: MS4152

| REQ'D. | ITEM | PART NUMBER | DESCRIPTION | SYMBOL |
|---|------|--|-----------------|-------------------------------|
| LIST OF MATERIAL | | | | |
| MATERIAL | | THE TECHNICAL MATERIEL CORP. MAMARONECK, NEW YORK | | |
| FINISH | | TITLE MARKING-COVER, LEDEX | | |
| UNLESS OTHERWISE SPECIFIED DIMENSIONS ARE IN INCHES AND INCLUDE CHEMICALLY APPLIED OR PLATED FINISHES | | DRAWN H. AUSTIN | DATE 1-14-65 | FINAL APPROVAL [Signature] |
| | | CHECKED [Signature] | DATE 2/8/65 | |
| DECIMALS .X ± .05 .XX ± .01 .XXX ± .005 | | FRACTIONS ± 1/64 ANGLES ± 0° 30' | | ELECT. DES. [Signature] |
| | | MECH. DES. [Signature] | | DATE 2/8/65 |
| SHEET | | | | LD1779 |
| | | | | Ø |
| | | | | REV. LTR. |

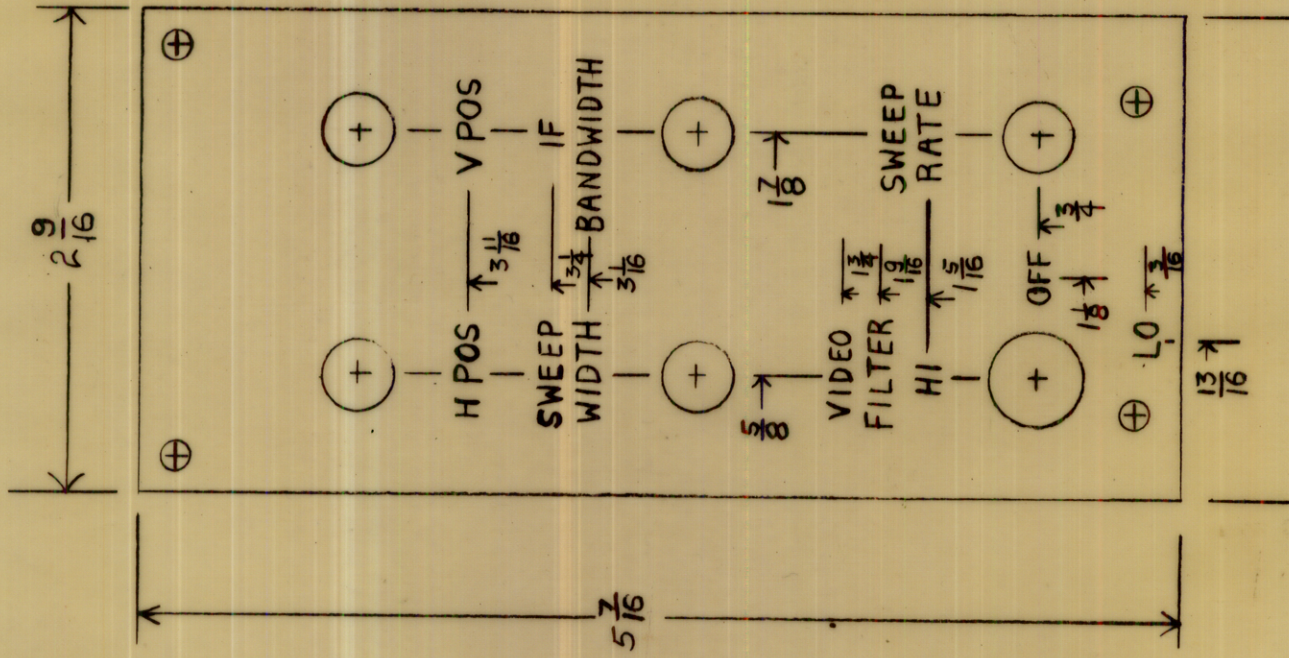
| | | |
|---|---------------|------------|
| 2 | HEAR-1 | |
| Q'TY./UNIT | MODEL USED ON | ASS'Y. NO. |
| SCALE | CODE | |
| THE CONTENTS OF THIS DRAWING ARE THE EXCLUSIVE PROPERTY OF THE TECHNICAL MATERIEL CORP. ITS UNAUTHORIZED USE OR REPRODUCTION IN WHOLE OR IN PART IS STRICTLY FORBIDDEN. | | |

NOTES

REVISIONS

| SYM | DESCRIPTION | DATE | E.M.N. NO. | DRAFT | CHKD | APPD |
|-----|---------------------------------|---------|------------|-------|------|------|
| Ø | ORIGINAL RELEASE FOR PRODUCTION | 8/14/69 | Ø | | | |

LD1781



| | | | | |
|-----------|-------|-----|---------------|-----------|
| QTY./UNIT | SCALE | FSA | MODEL USED ON | ASSY. NO. |
| | | | S401- | (A10523) |

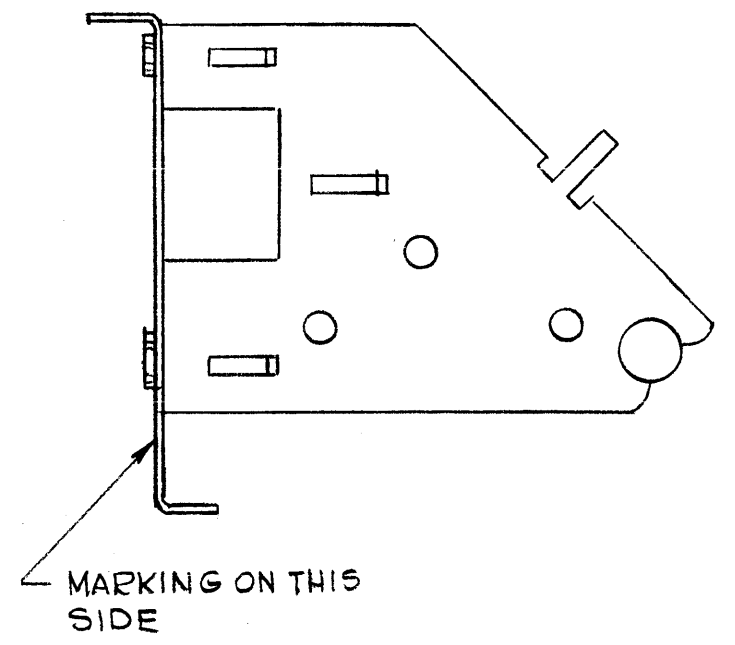
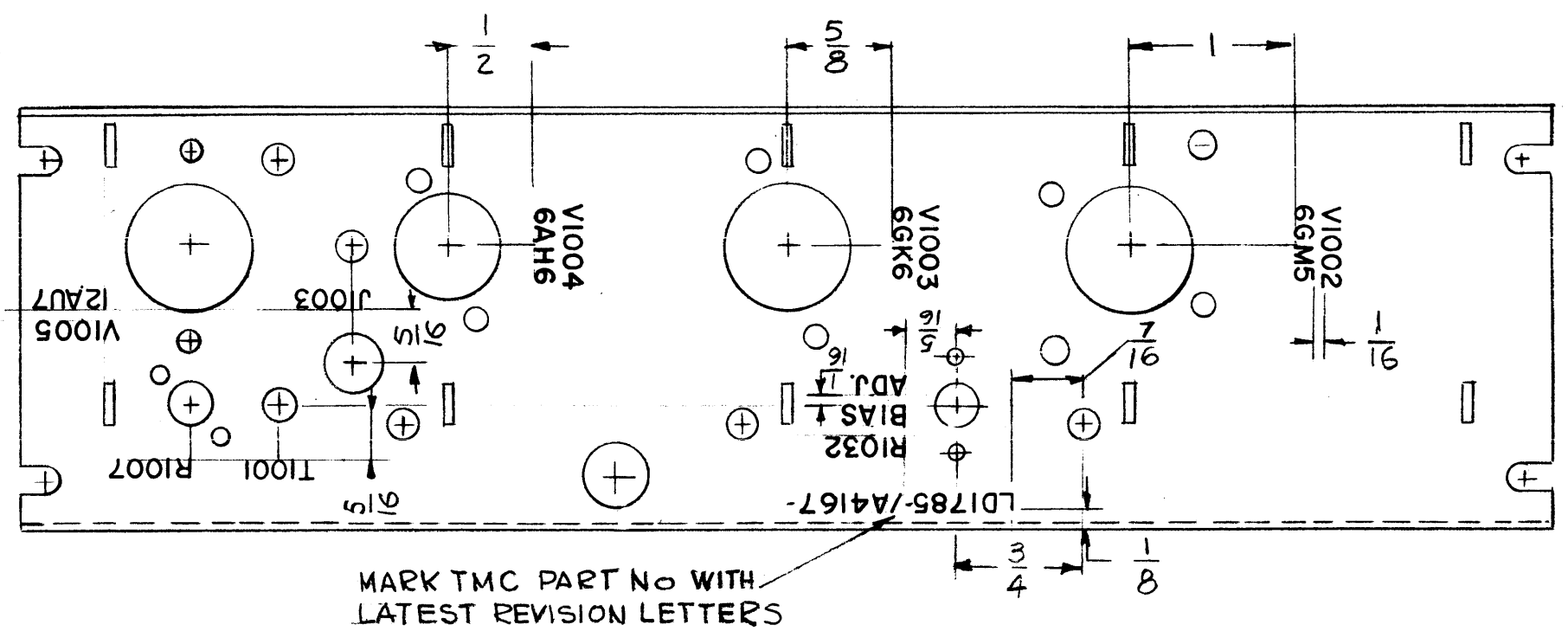
THE CONTENTS OF THIS DRAWING ARE THE EXCLUSIVE PROPERTY OF THE TECHNICAL MATERIEL CORP. ITS UNAUTHORIZED USE OR REPRODUCTION IN WHOLE OR IN PART IS STRICTLY FORBIDDEN.

NOTES

| REQ'D. | ITEM | PART NUMBER | DESCRIPTION | SYMBOL |
|--------|------|-------------|--|-----------|
| | | | LIST OF MATERIAL | |
| | | | THE TECHNICAL MATERIEL CORP. MAMARONECK, NEW YORK | |
| | | | TITLE | |
| | | | MARKING POTENTIOMETER BD. | |
| | | | DRAWN | DATE |
| | | | FINAL APPROVAL | DATE |
| | | | LD1781 | Ø |
| | | | ELECT. DES. | DATE |
| | | | MECH. DES. | DATE |
| | | | SHEET | REV. LTR. |

LD1785 A

| REVISIONS | | | | | |
|----------------|--|---------|------------|--------|---------------------------------------|
| SYM | DESCRIPTION | DATE | E.M.N. NO. | DRAFT | CHKD APPD |
| X ₁ | LETTERING TMC P/NO. WAS LD1785/A 4137- ON PICTORIAL 3 HOLES DELETED | 3-24-65 | | G.D.L. | <i>[Signature]</i> |
| Ø | ORIGINAL RELEASE FOR PRODUCTION | 3-2-65 | | G.D.L. | |
| A | R1032, BIAS, ADJ ADDED | 9/24/65 | 14876 | H.V. | <i>[Signature]</i> <i>[Signature]</i> |



MARKING PROCESS: AS PER TMC SPECIFICATION S-727.
LETTERING: 1/8 HIGH BLACK GOTHIC, LOCATED AS SHOWN.
 1/16 SPACING BETWEEN LETTER GROUPS

REF: A4167

| | | |
|------------|---------------|------------|
| 1 | CHG-3 | A 2945 |
| Q'TY./UNIT | MODEL USED ON | ASS'Y. NO. |
| SCALE 1:1 | CODE A | |

NOTES

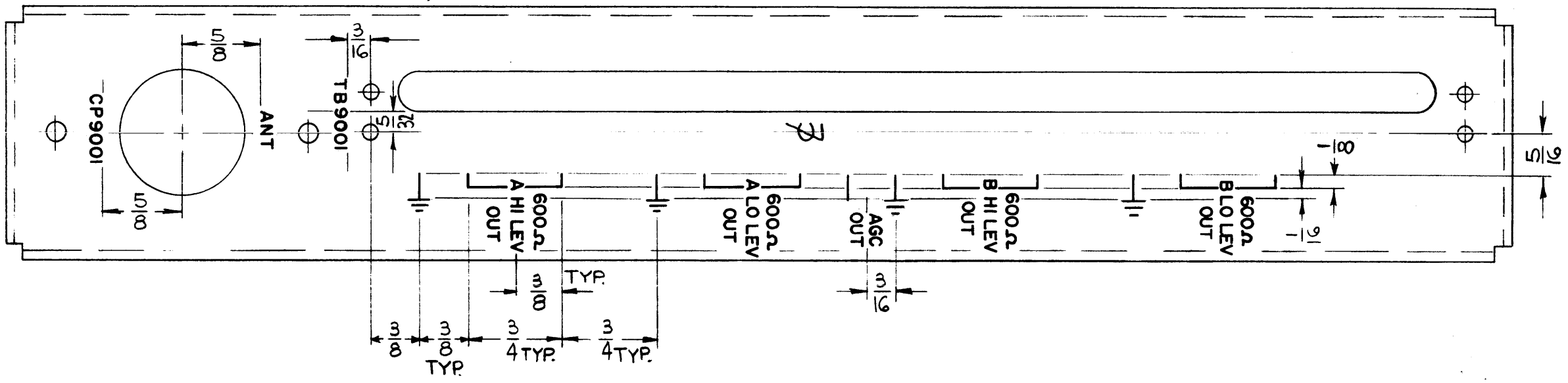
THE CONTENTS OF THIS DRAWING ARE THE EXCLUSIVE PROPERTY OF THE TECHNICAL MATERIEL CORP. ITS UNAUTHORIZED USE OR REPRODUCTION IN WHOLE OR IN PART IS STRICTLY FORBIDDEN.

| REQ'D. | ITEM | PART NUMBER | DESCRIPTION | SYMBOL |
|---|------|---|--------------|----------------|
| J. ANGER LIST OF MATERIAL | | | | |
| MATERIAL # | | THE TECHNICAL MATERIEL CORP. MAMARONECK, NEW YORK | | |
| FINISH | | TITLE MARKING, CHASSIS MAIN (ELEC. EQUIP. R.F.) MARKING PROCESS: AS PER TMC SPEC. S-727 | | |
| UNLESS OTHERWISE SPECIFIED DIMENSIONS ARE IN INCHES AND INCLUDE CHEMICALLY APPLIED OR PLATED FINISHES | | DRAWN G.D.L. | DATE 2-9-65 | FINAL APPROVAL |
| DECIMALS .X ± .05 .XX ± .01 .XXX ± .005 | | CHECKED <i>[Signature]</i> | DATE 3/24/65 | DATE |
| FRACTIONS ± 1/64 ANGLES ± 0° 30' | | ELECT. DES. <i>[Signature]</i> | DATE 3/24/65 | DATE |
| TOLERANCES | | MECH. DES. | DATE | DATE |
| SHEET | | | | REV. LTR. A |

LD1791

| REVISIONS | | | | | |
|-----------|---------------------------------|---------|---------------|-------|------|
| SYM | DESCRIPTION | DATE | E.M.N. NO. | DRAFT | APPD |
| Ø | ORIGINAL RELEASE FOR PRODUCTION | 3/16/65 | AA | HCA | |

MARK TMC PART NO. LD1791- /MS4389-
W/LATEST REV. LETTERS ON THIS
SURFACE.



MARKING PROCESS: AS PER TMC SPEC. S-727
LETTERING: 1/8 HIGH BLACK, GOTHIC
LOCATED AS SHOWN.

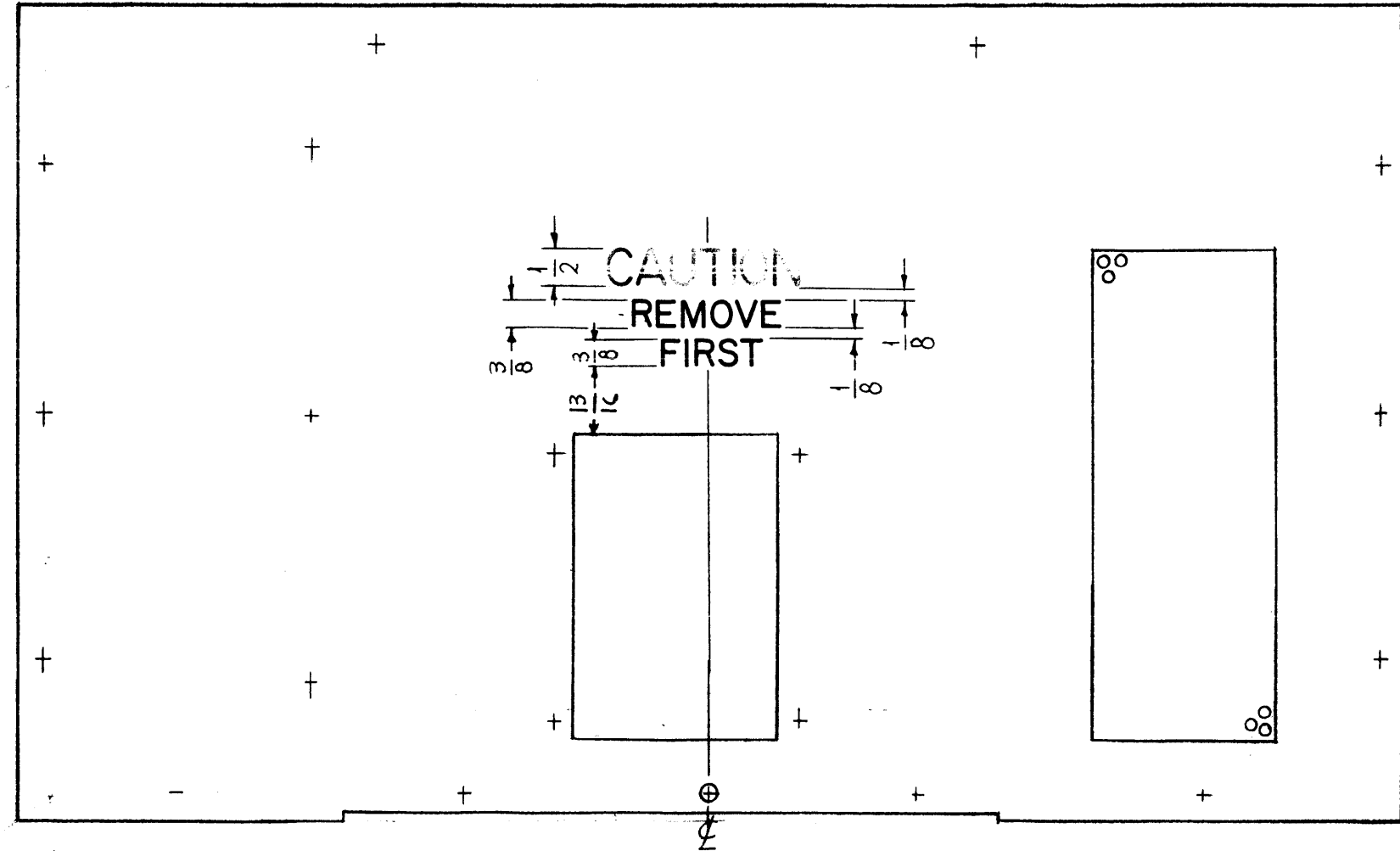
REF: MS4389

| REQ'D. | ITEM | PART NUMBER | DESCRIPTION | SYMBOL |
|---|------|-------------|--|---|
| STURMER LIST OF MATERIAL | | | | |
| MATERIAL | | | THE TECHNICAL MATERIEL CORP. MAMARONECK, NEW YORK | |
| FINISH | | | TITLE LETTERING, CHASSIS ANTENNA | |
| UNLESS OTHERWISE SPECIFIED DIMENSIONS ARE IN INCHES AND INCLUDE CHEMICALLY APPLIED OR PLATED FINISHES | | | DRAWN H. AUSTIN DATE 3-3-65 | FINAL APPROVAL <i>[Signature]</i> DATE 5/13/65 |
| DECIMALS .X ± .05 .XX ± .01 .XXX ± .005 | | | CHECKED <i>[Signature]</i> DATE 5/13/65 | DATE 5/13/65 |
| FRACTIONS ± 1/64 ANGLES ± 0° 30' | | | ELECT. DES. <i>[Signature]</i> DATE 5/13/65 | MECH. DES. <i>[Signature]</i> DATE |
| TOLERANCES | | | LD1791 | |
| THE CONTENTS OF THIS DRAWING ARE THE EXCLUSIVE PROPERTY OF THE TECHNICAL MATERIEL CORP. ITS UNAUTHORIZED USE OR REPRODUCTION IN WHOLE OR IN PART IS STRICTLY FORBIDDEN. | | | SHEET | |
| NOTES | | | REV. LTR. | |

| | | |
|--------------|---------------|------------|
| 1 | RAK-51 | |
| Q'TY./UNIT | MODEL USED ON | ASS'Y. NO. |
| SCALE 1:1 | CODE | |

LD1792

| REVISIONS | | | | | |
|-----------|---------------------------------|---------|------------|-------|-----------|
| SYM | DESCRIPTION | DATE | E.M.N. NO. | DRAFT | CHKD APPD |
| X | EXP. RELEASE | 2-10-65 | X | SRG | |
| X1 | CUTOUT ADDED, LETTERING RAISED | 7-28-65 | X1 | SRG | |
| Ø | ORIGINAL RELEASE FOR PRODUCTION | 6-8-66 | Ø | SRG | file |



MARK TMC PART NO. LD1792-
1/8 HIGH GOTHIC W/LATEST REV.
LETTER (ON REAR).

REF: MS 4312

MARKING PROCESS: AS PER TMC SPECIFICATION S-727.
LETTERING: 3/8 HIGH BLACK GOTHIC, LOCATED AS SHOWN.
LETTERING: 1/2 HIGH RED GOTHIC, LOCATED AS SHOWN.

NOTES

| | | |
|---|---------------|------------|
| 1 | RFTA-1 | |
| QTY./UNIT | MODEL USED ON | ASS'Y. NO. |
| SCALE 1/2:1 | CODE A | |
| THE CONTENTS OF THIS DRAWING ARE THE EXCLUSIVE PROPERTY OF THE TECHNICAL MATERIEL CORP. ITS UNAUTHORIZED USE OR REPRODUCTION IN WHOLE OR IN PART IS STRICTLY FORBIDDEN. | | |

| REQ'D. | ITEM | PART NUMBER | DESCRIPTION | SYMBOL |
|---|------|-------------|--|-----------------|
| F. BUDETTI LIST OF MATERIAL | | | | |
| MATERIAL | | | THE TECHNICAL MATERIEL CORP. MAMARONECK, NEW YORK | |
| FINISH | | | TITLE MARKING, COVER CHASSIS BOTTOM MARKING PROCESS: AS PER TMC SPEC S-727 | |
| UNLESS OTHERWISE SPECIFIED DIMENSIONS ARE IN INCHES AND INCLUDE CHEMICALLY APPLIED OR PLATED FINISHES | | | DRAWN SRG | DATE 2-10-65 |
| DECIMALS .X ± .05 .XX ± .01 .XXX ± .005 | | | CHECKED SRG | DATE 6-8-66 |
| FRACTIONS ± 1/64 ANGLES ± 0° 30' | | | ELECT. DES. SRG | DATE 6-8-66 |
| TOLERANCES | | | MECH. DES. | DATE |
| | | | FINAL APPROVAL D.B. [Signature] 6/8/66 | |
| | | | LD1792 | |
| | | | Ø | |
| | | | SHEET | |
| | | | REV. LTR. | |

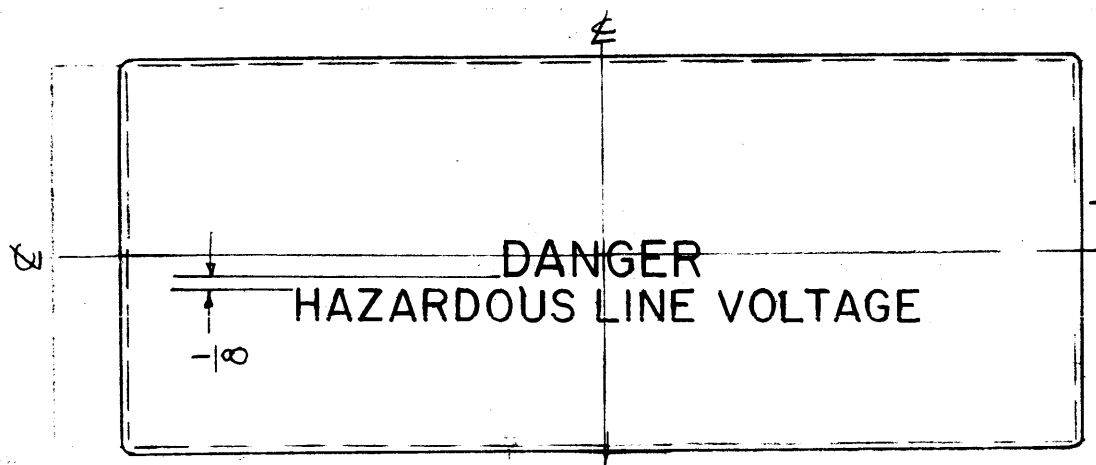
ML 28 6/8/66

MARKING PROCESS: AS PER TMC SPECIFICATION S-727.
 LETTERING: 5/16 HIGH RED GOTHIC, LOCATED AS SHOWN.
 TWO OR THREE LINES OPTIONAL

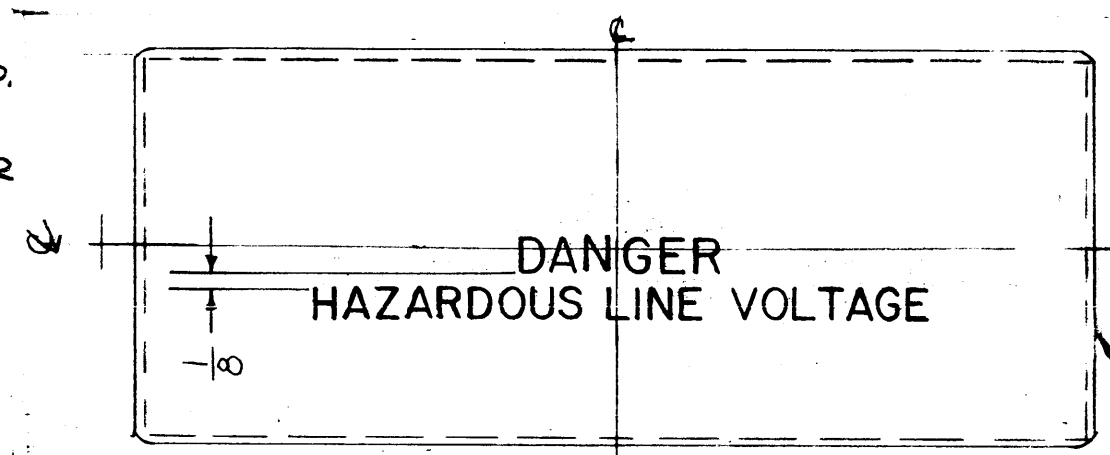
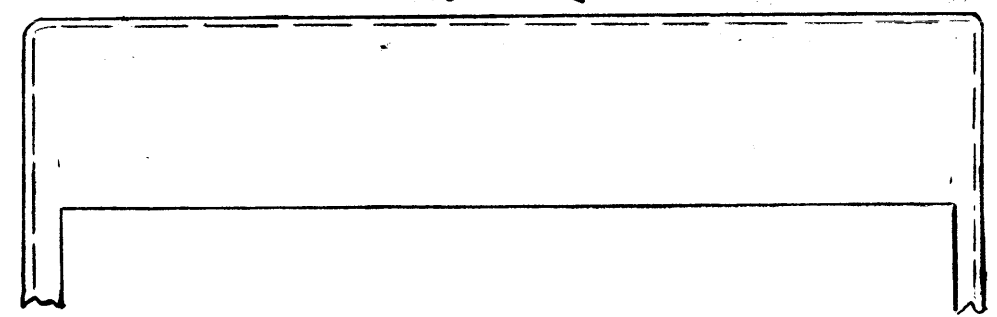
| REVISIONS | | | | | |
|-----------|--|----------|------------|-------|-----------|
| SYM | DESCRIPTION | DATE | E.M.N. NO. | DRAFT | CHKD APPD |
| X | EXP. RELEASE | 2/24/65 | X | SRG | |
| X1 | PICTORIAL REVISED, (2) ADDED, DRWG WAS 052 | 4/13/65 | | CTL | |
| Ø | ORIGINAL RELEASE FOR PRODUCTION | 4/20/65 | — | SRG | |
| A | (2) LIPS DELETED | 11/28/66 | 17301 | WJW | WJW |
| B | LETTERS WERE 1/2, LETTERING RE LOCATED | 8/21/67 | 18474 | HG | FB |

LD1798

MARK TMC PART NO.
 LD1798-1-1/PX922-1
 1/8 HIGH GOTHIC
 W/LATEST REV LETTER

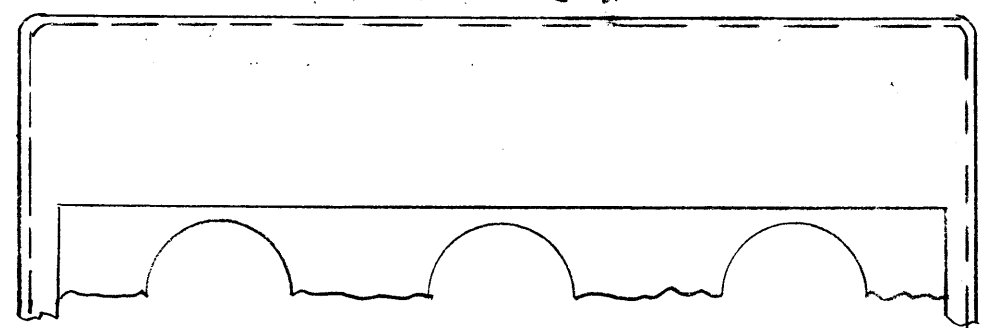


LD1798-1 (REF. PX922-1)



LD1798-2 (REF. PX922-2)

MARK TMC PART
 NO. LD1798-2/PX922-2
 1/8 HIGH GOTHIC
 W/LATEST REV.
 LETTER.



NOTES

| | | |
|-----------|---------------|------------|
| 2 | GPT-200K | |
| QTY./UNIT | MODEL USED ON | ASS'Y. NO. |
| SCALE # | CODE A | |

THE CONTENTS OF THIS DRAWING ARE THE EXCLUSIVE PROPERTY OF THE TECHNICAL MATERIEL CORP. ITS UNAUTHORIZED USE OR REPRODUCTION IN WHOLE OR IN PART IS STRICTLY FORBIDDEN.

| REQ'D. | ITEM | PART NUMBER | DESCRIPTION | SYMBOL |
|---|------|-------------|--|--------------|
| BUDETTI LIST OF MATERIAL | | | | |
| MATERIAL | | | THE TECHNICAL MATERIEL CORP. | |
| FINISH | | | F. BUDETTI MAMARONECK, NEW YORK | |
| | | | TITLE MARKING, SHIELD, BREAKER | |
| | | | MARKING PROCESS: AS PER TMC SPEC. S727 | |
| UNLESS OTHERWISE SPECIFIED DIMENSIONS ARE IN INCHES AND INCLUDE CHEMICALLY APPLIED OR PLATED FINISHES | | | DRAWN CLANZA | DATE 4/13/65 |
| | | | CHECKED WJW | DATE 4/20/65 |
| | | | ELECT. DES. | DATE |
| | | | MECH. DES. | DATE |
| | | | FINAL APPROVAL | |
| | | | LD1798 | |
| | | | B | |
| | | | SHEET | |
| | | | REV. LTR. | |

| | |
|-------------|-----------------|
| DECIMALS | FRACTIONS |
| .X ± .05 | ± 1/64 |
| .XX ± .01 | ANGLES ± 0° 30' |
| .XXX ± .005 | |