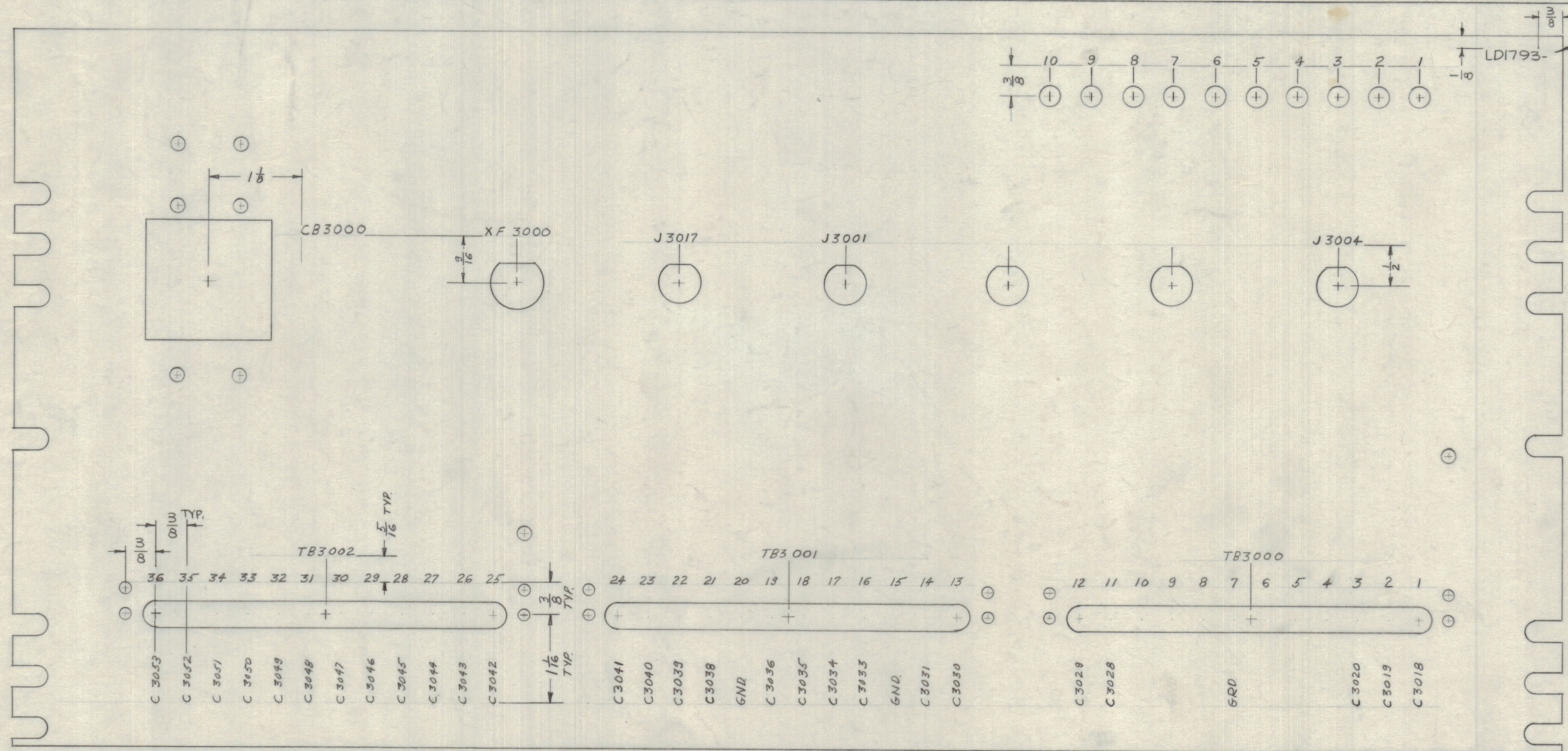
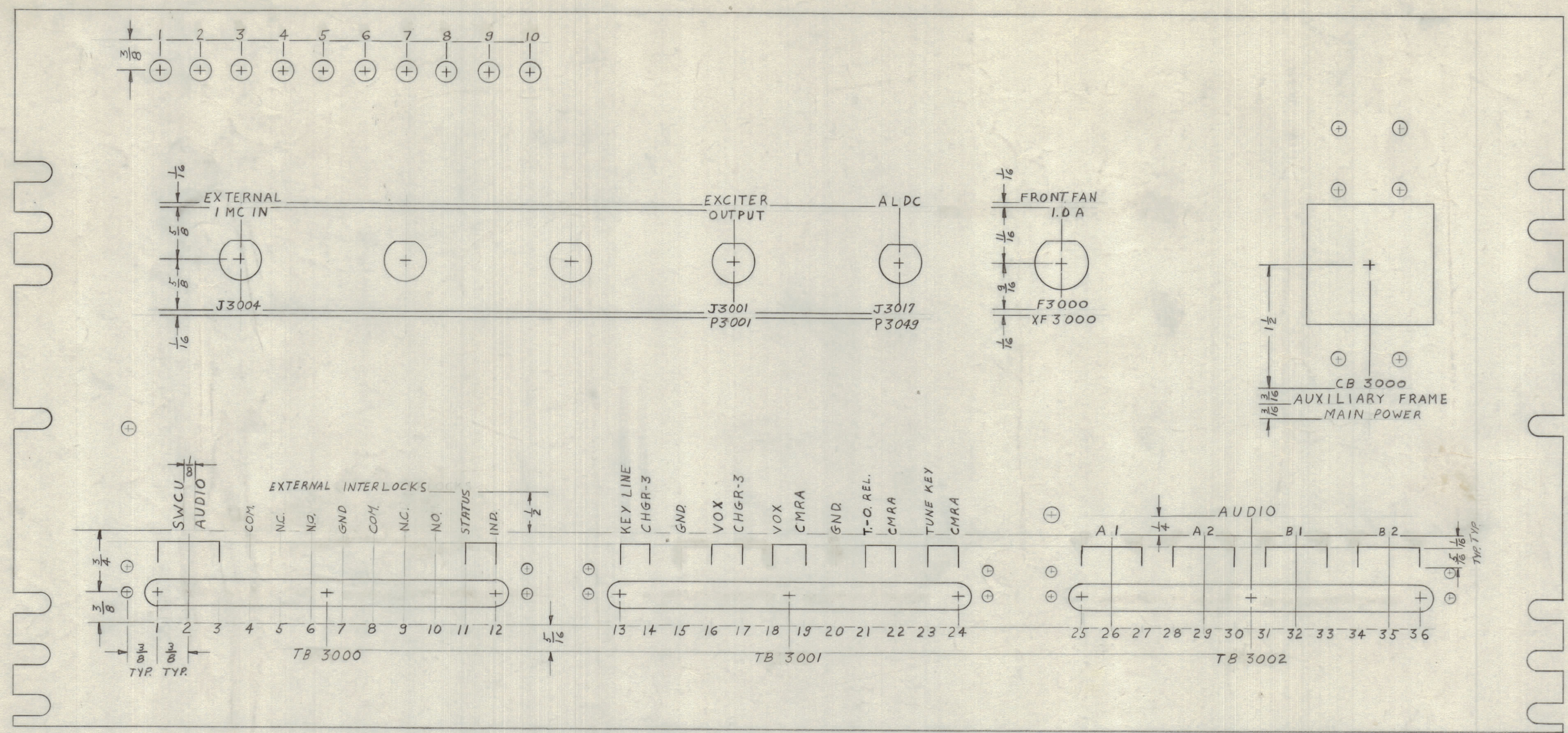


REVISIONS							
ZONE	SYM	DESCRIPTION	DATE	E.M.N. NO.	DRAFT	CHKD	APPD
XI		Added C3041, C3049, C3039, C3038, T-O REL, TUNE KEY, +2745 DIMENSIONS ON REAR VIEW					
	Ø	ORIGINAL RELEASE FOR PRODUCTION	3-1-67		L.A.K.		



MARKING PROCESS: AS PER TMC SPECIFICATION S-727.
 LETTERING: 1/8 HIGH BLACK GOTHIC, LOCATED AS SHOWN.

NOTES

QTY/UNIT	1	MODEL USED ON	ISIE-10K	ASSY. NO.	AX 563
SCALE		CODE			

REQ'D.	ITEM	PART NUMBER	DESCRIPTION	SYMBOL

REF: M54395

LIST OF MATERIAL				
MATERIAL	TITLE	DRAWN	DATE	FINAL-APPROVAL
	THE TECHNICAL MATERIEL CORP. MAMARONECK, NEW YORK			
	LETTERING, CENTER PANEL			
		CHECKED	DATE	
		ELECT. DES.	DATE	
		MECH. DES.	DATE	

UNLESS OTHERWISE SPECIFIED
 DIMENSIONS ARE IN INCHES AND INCLUDE
 CHEMICALLY APPLIED OR PLATED FINISHES

DECIMALS: ±.05
 .XX ±.01
 .XXX ±.005

FRACTIONS: ± 1/64
 ANGLES: ± 0° 30'

DATE: 3/1/67
 DATE: 3/1/67
 DATE: 3/1/67

LD1793

LD1793