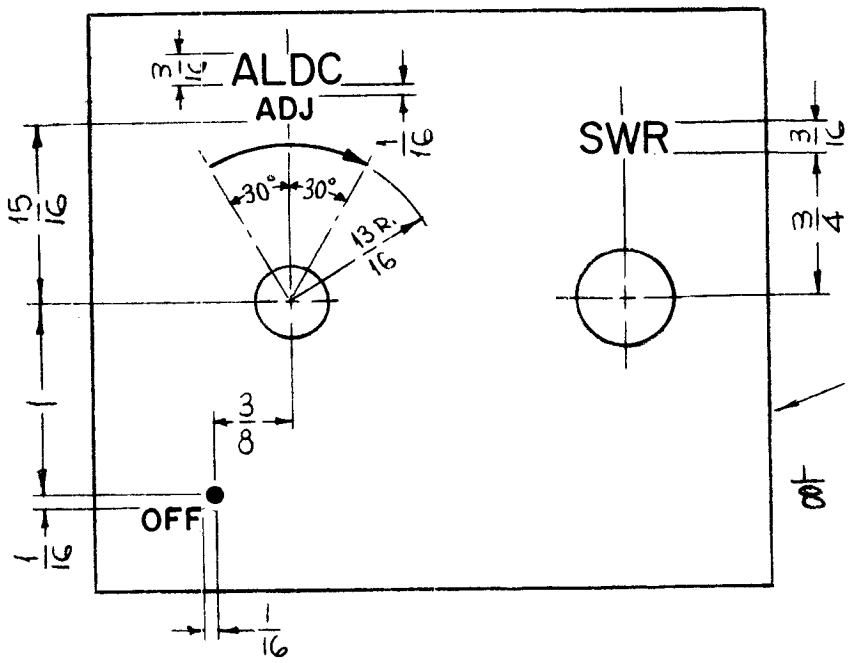
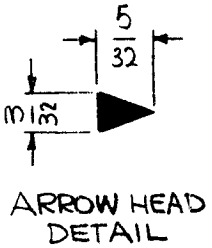


HEIGHT OF LETTERS	DEPTH OF STROKE	WIDTH OF STROKE
3/32	.010	.015
3/16	.010	.025
DOTS	.010	1/16 DIA.
ARROWS	.010	SEE DETAIL
LINES	.010	.015

REQ. PER UNIT	USED ON		
	MODEL	ASS'Y. NO.	DATE
1	KIT-161		1-27-65

LD1775 \emptyset



- UNLESS OTHERWISE SPECIFIED
- 1~ LETTERING 3/32
 - 2~ ALL LETTER GROUPS TO BE CENTERED ON HOLES.
 - 3~ ALL ENGRAVING TO BE WHITE FILLED.
 - 4~ LETTERING TO BE GOTHIC SIZES SHOWN ON CHART.

MARK TMC PART NO.
(LD1775/MS4333)
1/8
GOTHIC W/LATEST REV
LETTER. ON REAR.

REF. MS 4333

REQ. ITEM	PART NO.	F. BUDETTI		DESCRIPTION	SYMBOL	
				THE TECHNICAL MATERIEL CORP. MAMARONECK, NEW YORK		
				MARKING, PLATE, FRONT		
				MARKING PROCESS: ENGRAVING		
SYMBOL	DESCRIPTION	DATE	CH. NO.	DRAFTS	CHECKER	ENG. APP.
\emptyset	ORIGINAL RELEASE FOR PRODUCTION	3-1-65	SRG			
X	EXP. RELEASE	1-27-65	X	SRG		
UNLESS OTHERWISE SPECIFIED DIMENSIONS ARE IN INCHES AND INCLUDE CHEMICALLY APPLIED OR PLATED FINISHES		SCALE	1:1			
DECIMALS X ± .05 .XX ± .01 .XXX ± .005	TOLERANCES	FRACTIONS ± 1/64 ANGLES ± 0° 30'	CODE	A		
		TYPE & TEMPER	HEAT TREAT. SPEC.	DRAWN	CHECKED	FINAL APPROVAL
				SRG		
		FINISH & SPEC. NO.		ELEC. DES. APP.	MECH. DES. APP.	LD1775 \emptyset