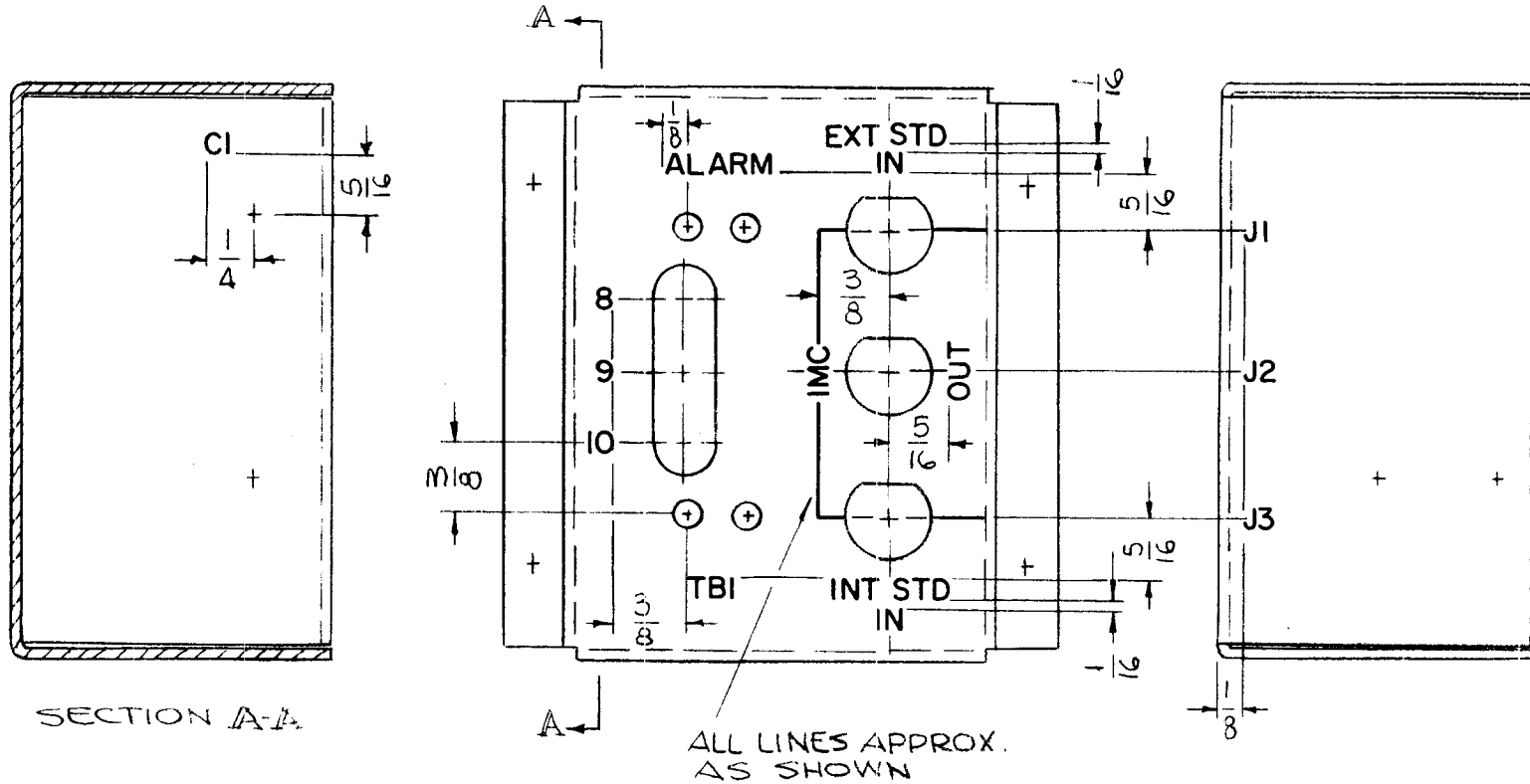


MARKING PROCESS: AS PER TMC SPECIFICATION S-727.

LETTERING: 1/8 HIGH BLACK GOTHIC, LOCATED AS SHOWN.

REQ. PER UNIT	USED ON		
	MODEL	ASS'Y. NO.	DATE
1	KIT-215	AX-546	2-26-65
1	KIT-216	AX-546	2-26-65

LD1774  $\emptyset$



REF: MS 4332-

REQ.	ITEM	PART NO.	F. BUDETTI DESCRIPTION				SYMBOL	
$\emptyset$	ORIGINAL RELEASE FOR PRODUCTION	J-2-65	THE TECHNICAL MATERIEL CORP. MAMARONECK, NEW YORK					
X	EXP RELEASE	2-26-65	X	SRG	MARKING, CHASSIS MAIN			
SYM	DESCRIPTION	DATE	CH. NO.	DRAFTS	CHECKER	ENG. APP.		
UNLESS OTHERWISE SPECIFIED DIMENSIONS ARE IN INCHES AND INCLUDE CHEMICALLY APPLIED OR PLATED FINISHES		SCALE	1:1					
DECIMALS .X $\pm$ .05 .XX $\pm$ .01 .XXX $\pm$ .005	TOLERANCES	FRACTIONS $\pm$ 1/64 ANGLES $\pm$ 0° 30'	CODE A					
		TYPE & TEMPER		HEAT TREAT. SPEC.		DRAWN	CHECKED	FINAL APPROVAL
						SRG		
		FINISH & SPEC. NO.		ELEC. DES. APP.		MECH. DES. APP.		LD1774 $\emptyset$