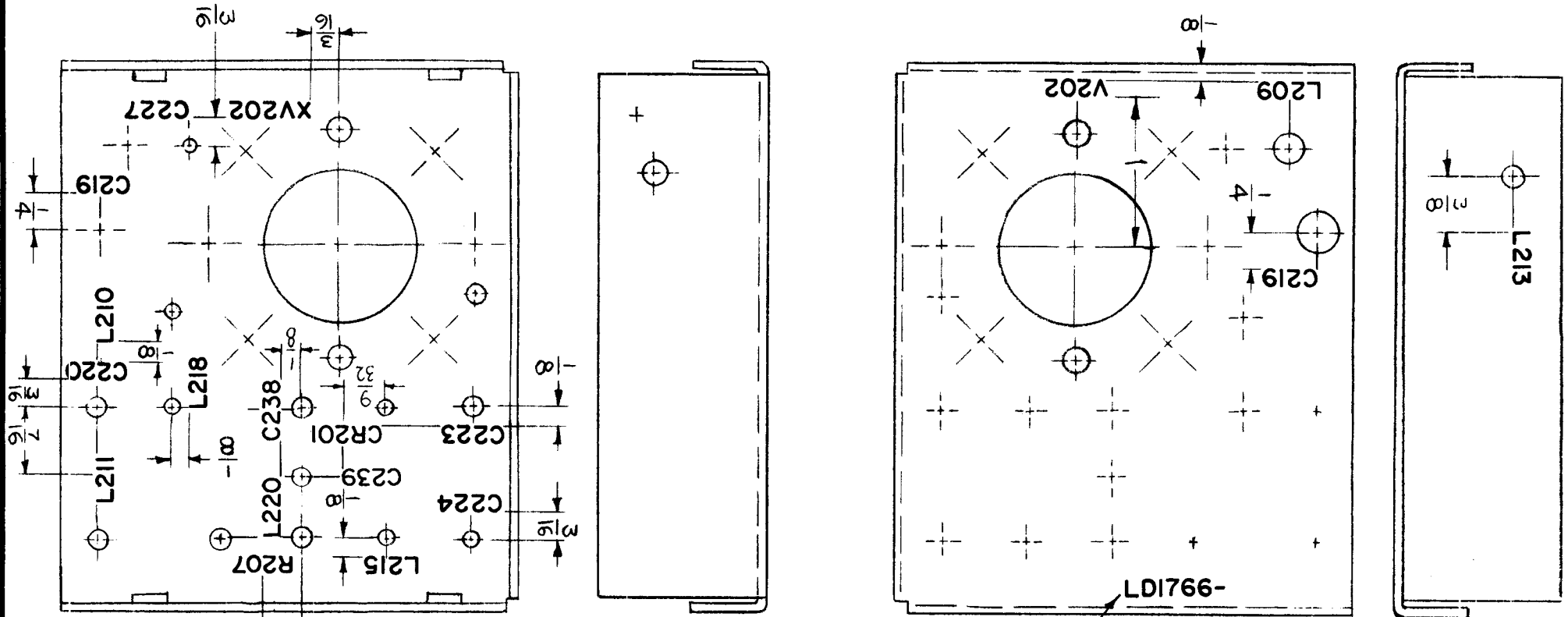


REQ. PER UNIT	USED ON			LD1766	Ø
	MODEL	ASS'Y. NO.	DATE		
1	RFTA-1		1-20-65		

MARKING PROCESS: AS PER TMC SPECIFICATION S-727.

LETTERING: 1/8 HIGH BLACK GOTHIC, LOCATED AS SHOWN.



MARK TMC P/N WITH LATEST REVISION LETTER.

Ø	ORIGINAL RELEASE FOR PRODUCTION	6.7.66	Ø	LHW		REF: MS 4315
X3	LETTERING RELOCATED	6-8-65	X3	SRG		
X2	MARKINGS REVISED	4.21.65	X2	SRG		
X1	LETTERING ADDED	3.10.65	X1	SRG		
X	EXP. RELEASE	1-20-64	X	SRG		
SYM	DESCRIPTION	DATE	CH. NO.	DRAFTS	CHECKER	ENG. APP.
UNLESS OTHERWISE SPECIFIED DIMENSIONS ARE IN INCHES AND INCLUDE CHEMICALLY APPLIED OR PLATED FINISHES		SCALE	1:1			
DECIMALS .X ± .05 .XX ± .01 .XXX ± .005	TOLERANCES	FRACTIONS ± 1/64 ANGLES ± 0° 30'	CODE	A		
		TYPE & TEMPER	HEAT TREAT. SPEC.	DRAWN		
		FINISH & SPEC. NO.		ELEC. DES. APP.	MECH. DES. APP.	LD1766 Ø

REQ. ITEM		PART NO.	F. BUDETTI	DESCRIPTION	SYMBOL
			THE TECHNICAL MATERIEL CORP. MAMARONECK, NEW YORK		
		STOCK SIZE	MARKING, CHASSIS, DRIVER		
		MATERIAL	MARKING PROCESS: AS PER TMC SPEC. S727		
			SRG	QC/S	SRG
				CHECKED	FINAL APPROVAL